

THE PAD

BY OMNIYAT

THE PAD

BY OMNIYAT

BIGGGER

& BOLDER

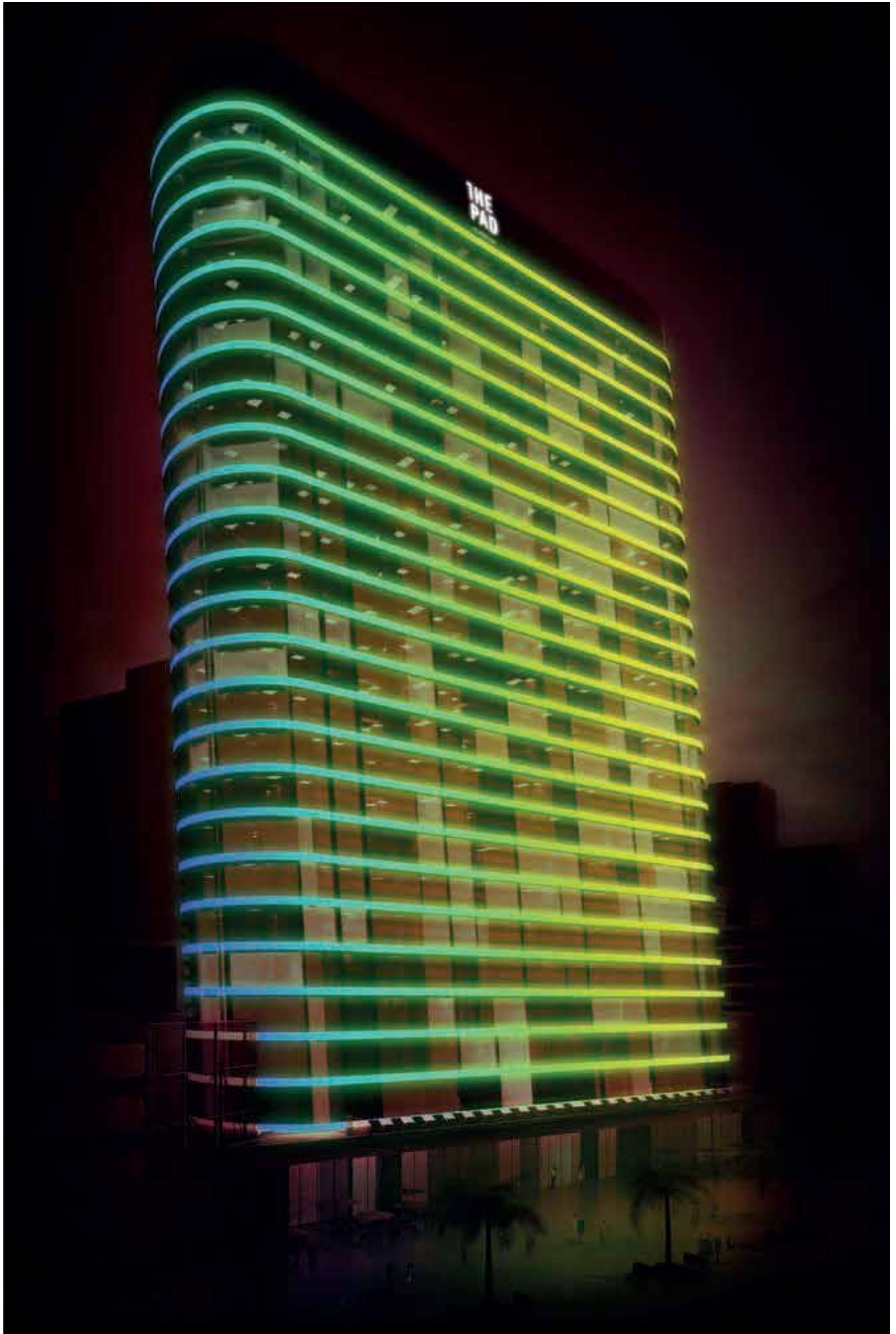
SHINE LIKE A STAR

THE PAD LIVES AND BREATHS WITH YOU.

The Pad brings South Beach to Dubai. Tilted at a 6.5° angle, enveloped in LED lighting, the chic and sophisticated Pad is the pinnacle of super-glamorous condo living, the most striking building on the Creek, presiding over the Burj Khalifa and the sea.

The unique façade shines and shimmers, reflecting the ethereal blend of sea, sun and sky during the day, while blazing hot to cool, from vibrant disco to the mystery and allure of the stars at night.

With 253 sumptuously designed and furnished residences, a sparkling pool and gym, luxuriant gardens, the Pad is the most coveted address in Dubai.





PERFECTLY POSITIONED

AT THE HEART OF EVERYTHING THAT MATTERS!

The Pad is perfectly positioned, right on The Creek, in the heart of Dubai's Business Bay and the prestigious Burj Khalifa District.

It's the most desirable location for investment as it is central to both an ever-expanding business hub, as well as growing residential district in pace with the essential Creek extension project.



LOCATION LOCATION LOCATION

**STROLL ALONG
THE PALM-LINED
PROMENADE TO THE BEST
RESTAURANTS IN DUBAI,
INTRIGUING NEW CLUBS
AND SWANKY BARS.**

The Pad connects to the thrilling Dubai Creek, its stunning boardwalk, the amazing Dubai Creek Park, and a myriad of cool restaurants, bars, and shops.

A short 15 minute drive is all it takes to get to you from the airport to a glamorous home at The Pad.

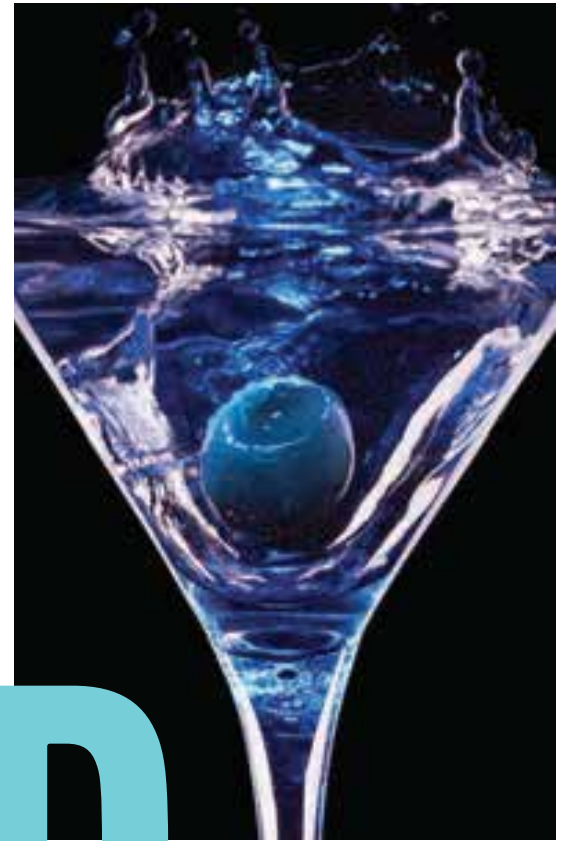
The Pad has convenient access to the Sheikh Zayed Road and the Al Khail Road, and is only a few minutes from Dubai's International Financial Centre (DIFC) and its Trade Center.



FOR A DIP IN THE SEA, THE STUNNING JUMEIRAH BEACH IS JUST A HOP AND A SKIP AWAY.

Gucci, Prada, Dolce & Gabbana are all around the corner, at the biggest shopping centre in the world, the Dubai Mall, with all the most exclusive brands.

Down the road is the Souk al Bahar, where you can explore more than 1,500 eclectic shops and mingle with the Dubai crowd, while the fashionable Dubai Design District is just across the road.



WORLD CLASS CITY



A nighttime photograph of the Burj Khalifa in Dubai, United Arab Emirates. The skyscraper is illuminated with warm yellow lights, standing prominently against a dark blue twilight sky. The surrounding cityscape is also lit up, with various buildings and streets visible in the foreground and middle ground. The overall scene conveys a sense of a bustling, modern metropolis.

**WHEN YOU'RE
AT THE PAD,
YOU'RE PIVOTAL
TO EVERYTHING!**

THE PAD

BY OMNIYAT



JUMEIRAH BEACH

12 MIN

DIFC

7 MIN

BURJ KHALIFA

5 MIN

THE ADDRESS

FOUR SEASONS

10 MIN

DOWNTOWN DUBAI

2 MIN

THE DUBAI MALL

THE PAD
BY OMNIYAT

DUBAI DESIGN DISTRICT

SHEIKH ZAYED RD

BURJ KHALIFA BLVD

DUBAI CREEK

AL KHAIL RD

BVLGARI
HOTELS & RESORTS

STRIKE A POSE

**THE PAD IS
DESIGNED WITH
SUMPTUOUS AND
STYLISH FURNISHED
RESIDENCES.**

Artful open spaces emphasize passion, modernity and an innovative approach to condo living.

From one to two bedroom suites and lofts, as well as special terraced villa apartments, the Pad offers a range of units to suit all types and tastes of its guests and residents.

**THE PAD HAS IT ALL -
LIVE, PLAY AND ENJOY,
IN STYLE.**



GO WITH THE FLOW

**THE MOMENT
YOU ENTER THE
PAD'S DYNAMIC
LOBBY YOU'LL FEEL
THE GREAT VIBE
OF THE BUILDING
THAT LIVES
AND BREATHE
WITH YOU.**

From its wondrous sparkle and inviting design, the transformative lighting and animated day to night experience, to the know-it-all and can-arrange-it-all concierge.



UNIQUE PARADISE

**THE SPRAWLING
LIVING ROOM HAS
A 6M HIGH CEILING,
GIVING YOU A
MARVELOUS SENSE
OF FREEDOM AND AN
EXCEPTIONAL VIEW.**

Up the feature staircase is an open bedroom that offers an even grander double height view.

Let your imagination run wild as you decorate the wall with a unique art collection, create a personal museum, or impress with a stunning library.

The white wall is an incredible blank canvas, waiting for you to fill it.



SOLO... FOR YOU

**THIS ONE BEDROOM
APARTMENT IS
TRULY UNIQUE.**

A spacious living room and bedroom, fully equipped kitchen, elegant bathroom, all enhanced with full floor-to-ceiling views of Downtown Dubai.



1 BEDROOM

URBAN OASIS

**COME HOME TO
THE BEST VIEWS
OF DUBAI, ALL
FROM THE PRIVACY
OF YOUR INVITING
VILLA IN THE SKY.**

Enjoy waking up in a sprawling bed to a magnificent sunrise, ascending slowly over the Creek.

View the exciting Burj Khalifa from the privacy of your plush and stylish living room.

Relish the sunset on a spacious exotic terrace, and say good night while gazing at Dubai's sparkling lights.

**THE BUENA
VISTA OF DUBAI -
A CONTINUOUS
LIVING INSPIRATION**



TERRACE

SPLASH & SPARKLE

**THE PAD'S POOL,
WITH CABANAS
AND TANNING DECK,
IS THE APEX WHERE
LEISURE MEETS
LUXURY.**

Here you can splash and sparkle,
work on your tan and your social
skills.

Exhilarate both body and soul
with a dazzling view of the
Downtown skyline, calm waters
and seclusion from the hustle
and bustle of the city below.



A LIFE OF LEISURE

REPLENISH YOUR SENSES

The Pad's sumptuous amenities - sparkling vista pool and gym, and luxuriant gardens - are designed to give you what you want, when you want - day and night: whether you're looking to lounge under the palm trees and hang out, revive your strength, or yearn for serenity and peace of mind.

ENJOY THE OASIS

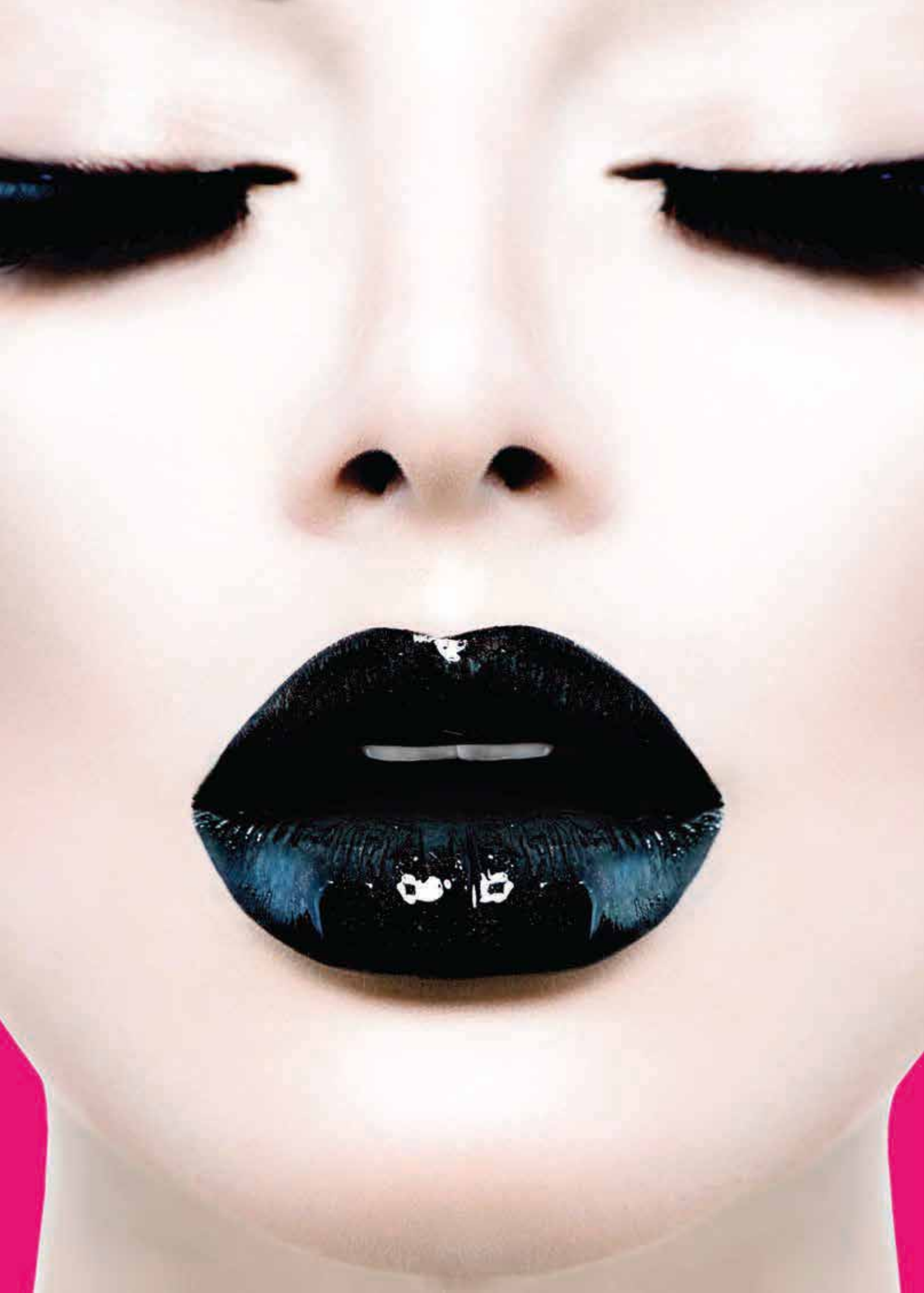




MAKE YOUR MARK

WORKING OUT
WITH THE LATEST
IN FITNESS AND
PERSONAL TRAINING,
WHILE TAKING IN THE
SPECTACULAR VIEW!

**RETAIL
AT
THE PAD**





AT YOUR DOORSTEP



YOU'LL HAVE MORE TIME TO ENJOY THE THINGS YOU LOVE

The Pad provides you with the things you need, when you want them, and where you need them.

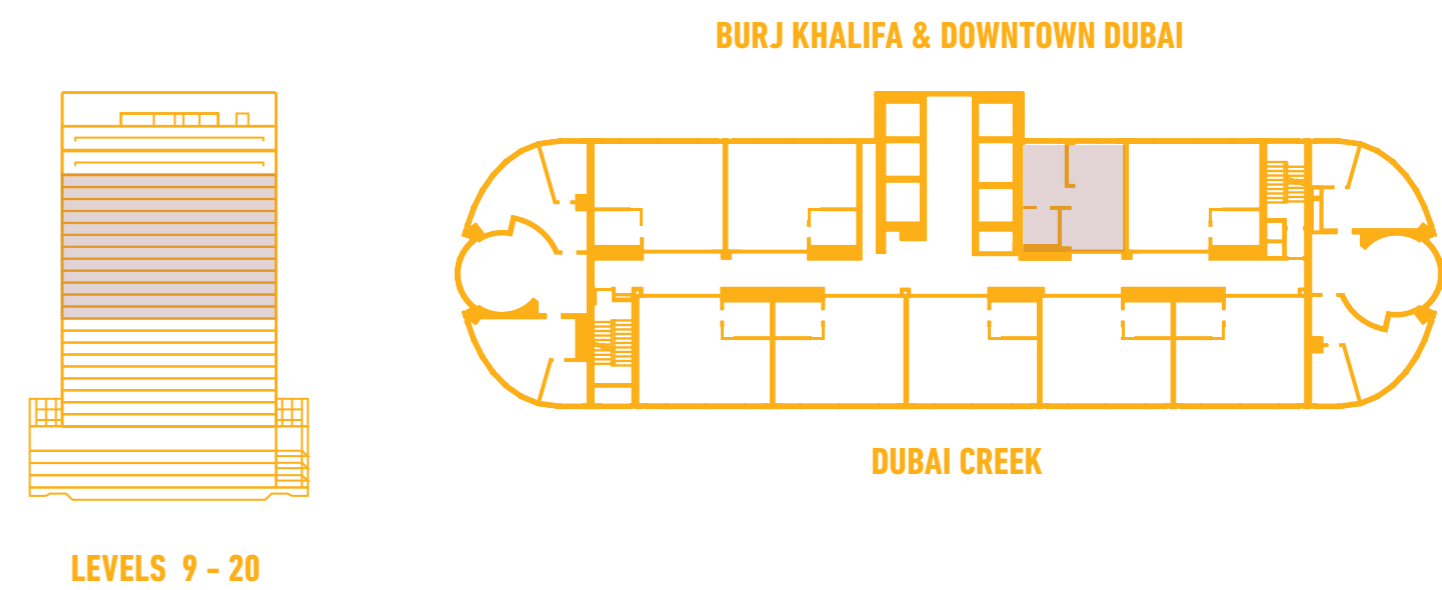
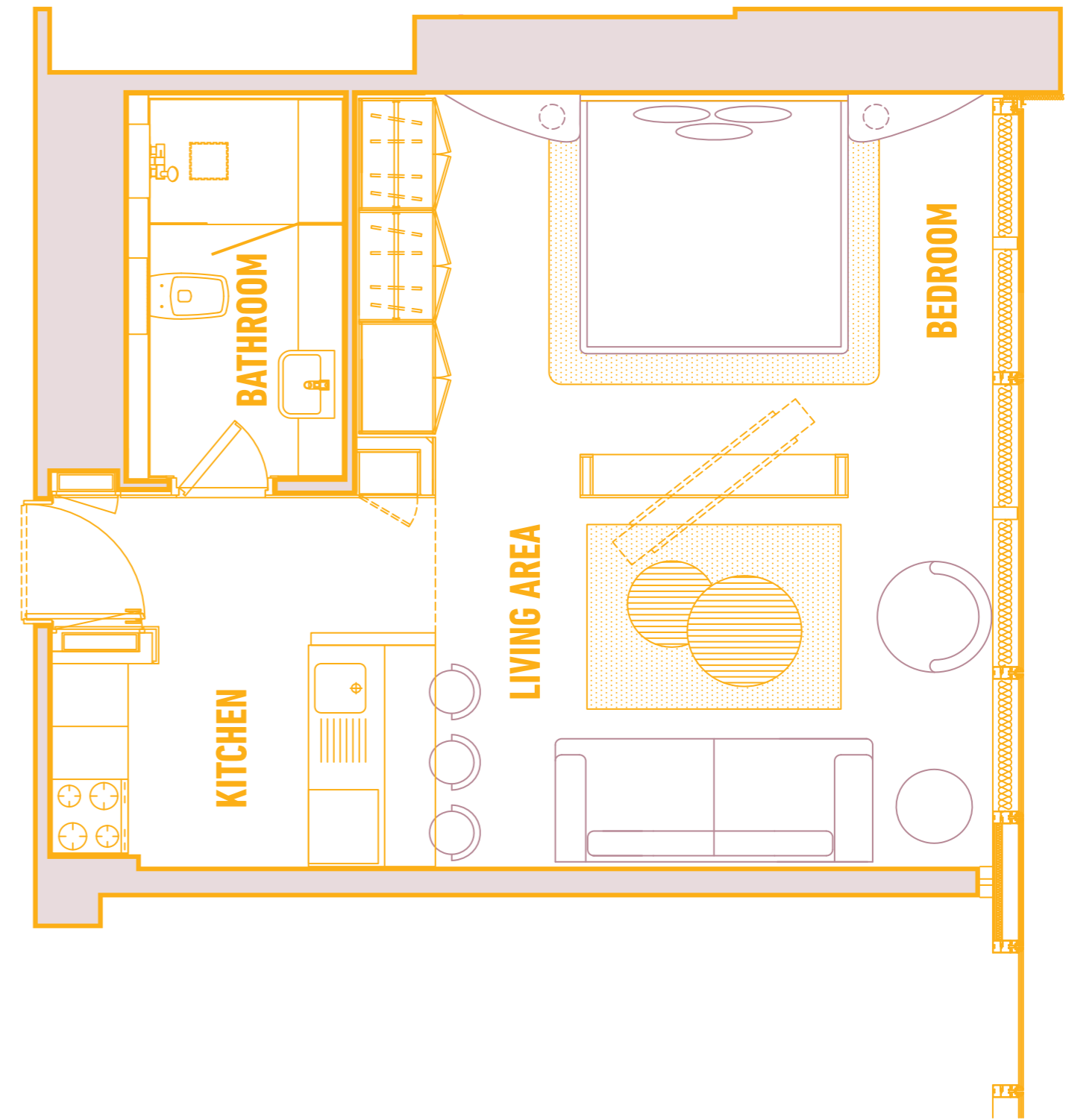
The Pad has a mix of trendy retail and dining units where you can satisfy your craving for a perfect morning espresso, indulge in the finest gourmet chocolate, select from an eclectic array of the finest international delicacies, treat yourself to a day at the spa, delight in exotic scents from around the world or pick the perfect gift for that someone special and leave the cooking to the pros in the Pad's Fusion Lounge.





MIAMI STUDIO

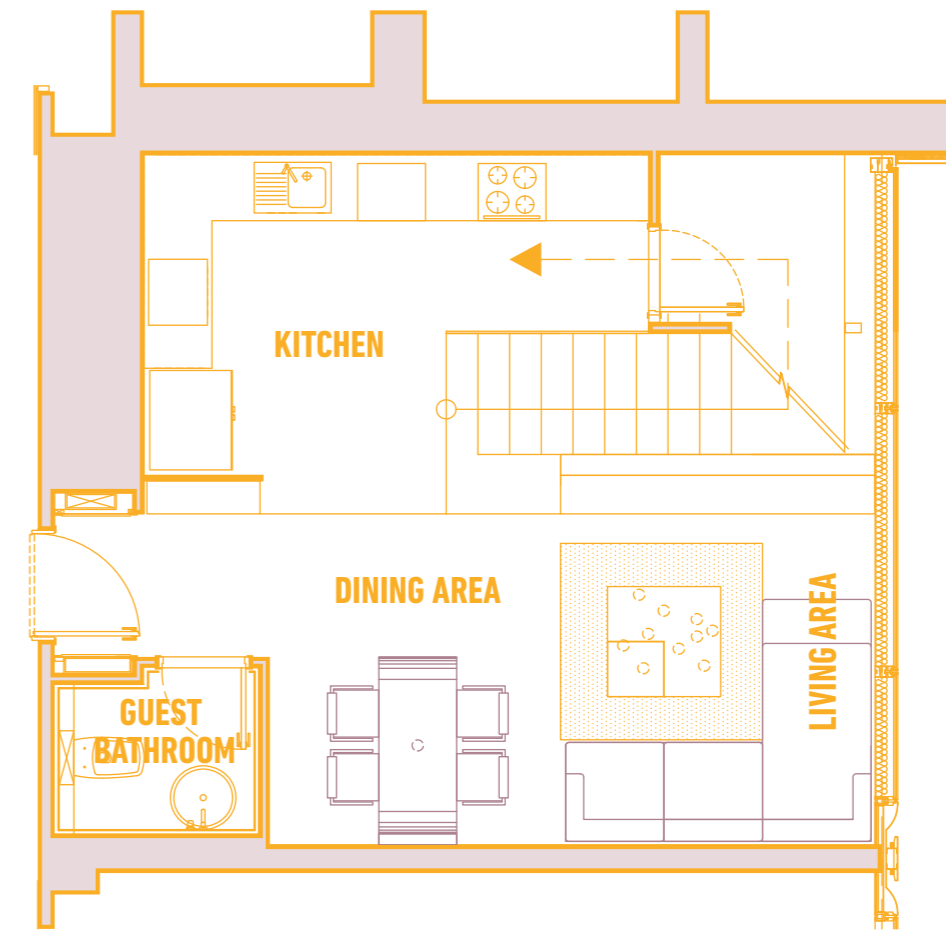
VIEW: BURJ KHALIFA & DOWNTOWN DUBAI
CAR PARK: 1NO.
SIZE: 580 SF



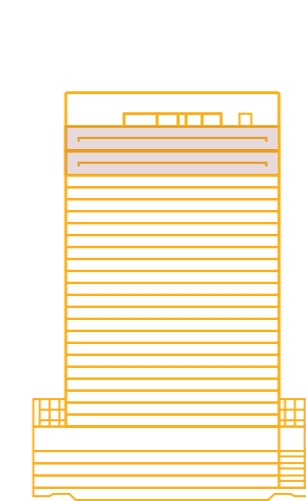
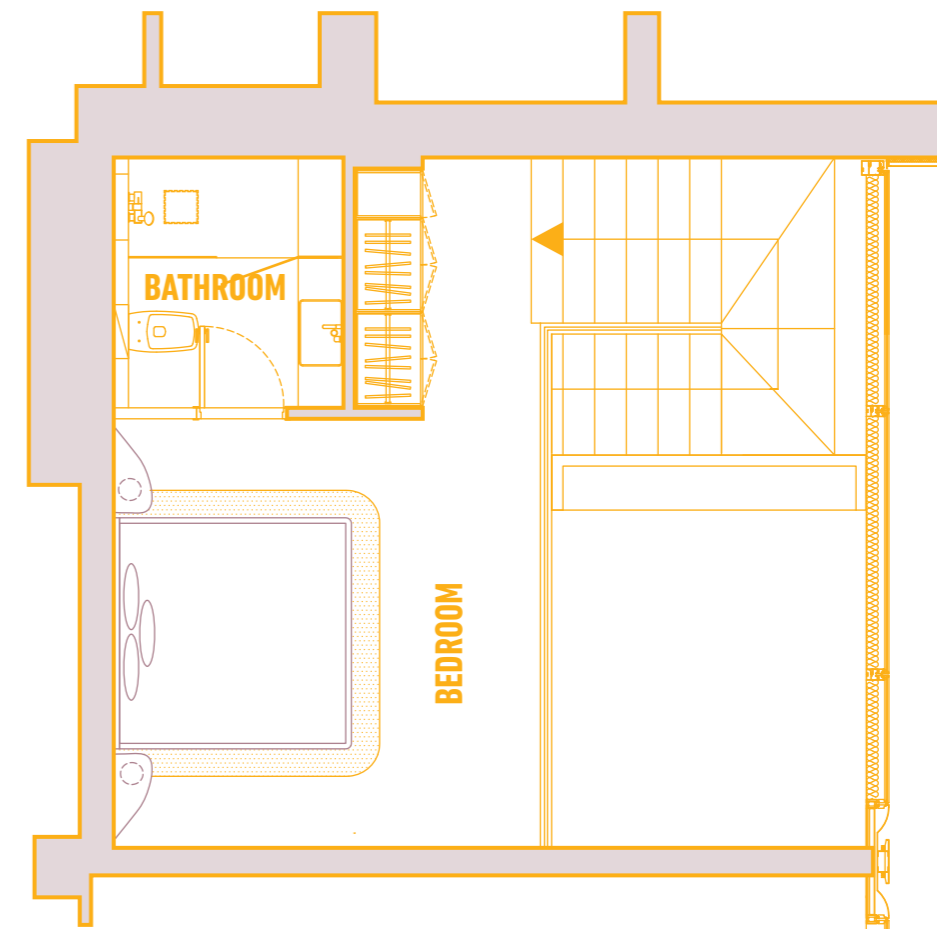
MIAMI STUDIO LOFT

VIEW: BURJ KHALIFA & DOWNTOWN DUBAI
CAR PARK: 1NO.
SIZE: 1185 SF

GROUND FLOOR

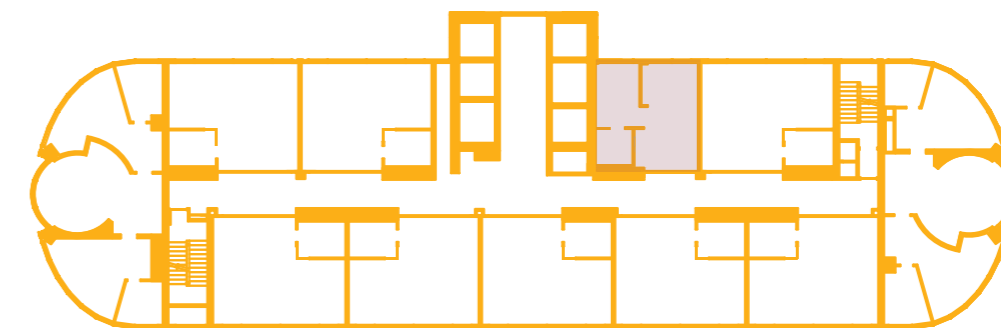


MEZZANINE



LEVELS 21 - 24

BURJ KHALIFA & DOWNTOWN DUBAI

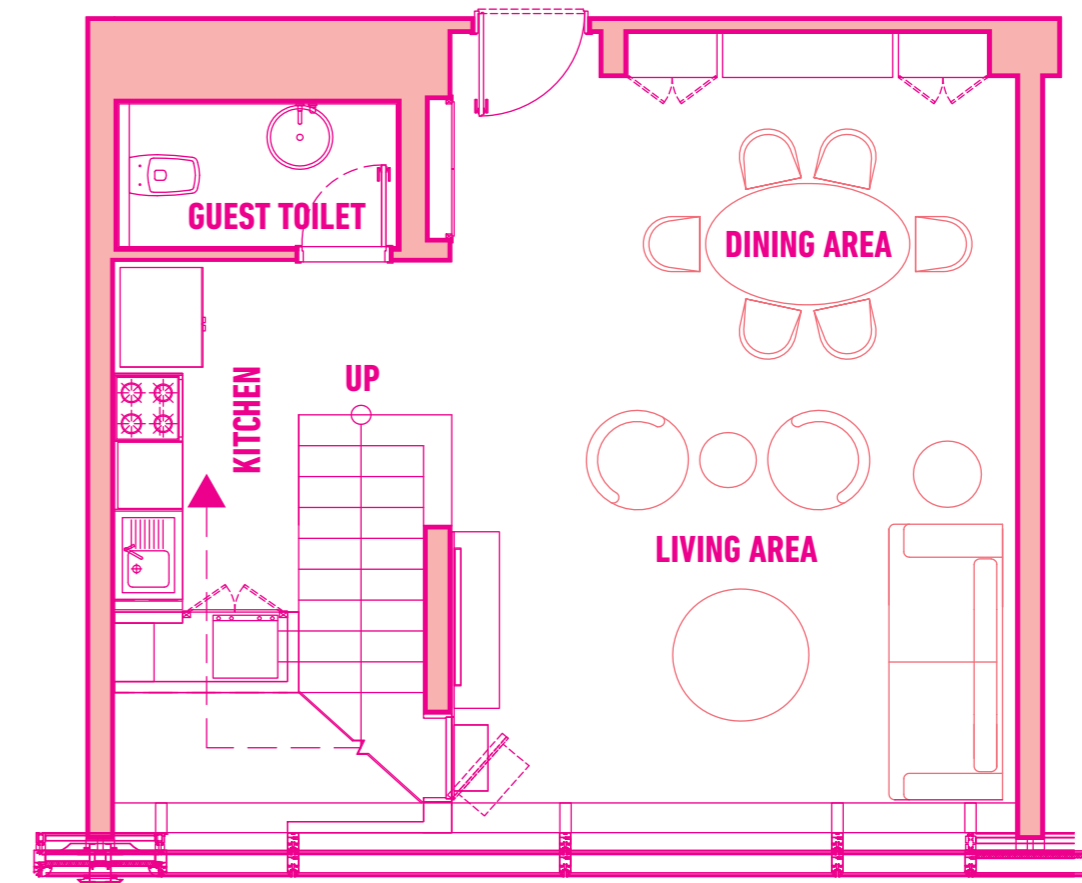


DUBAI CREEK

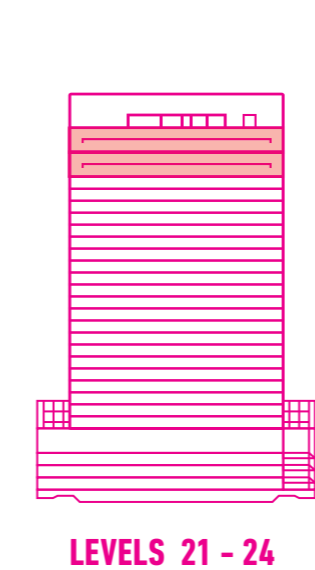
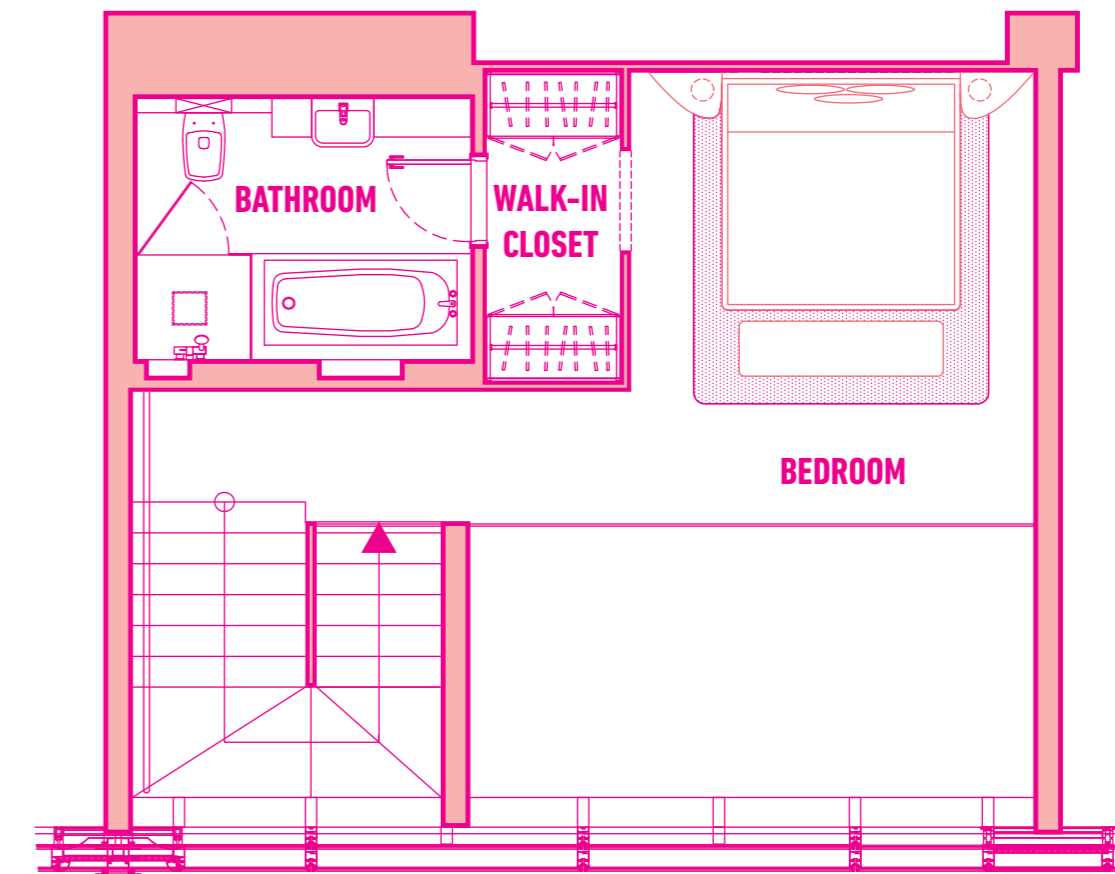
UNICO ONE BEDROOM

VIEW: BURJ KHALIFA OR DUBAI CREEK VIEW
CAR PARK: 1NO.
SIZE: 680 SF

GROUND FLOOR

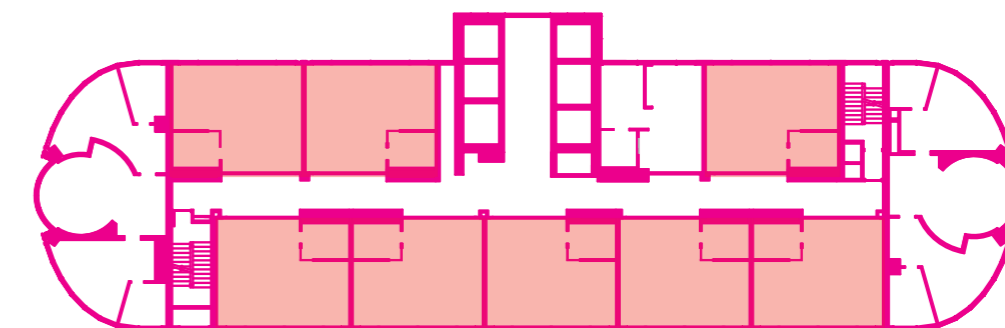


MEZZANINE



LEVELS 21 - 24

BURJ KHALIFA & DOWNTOWN DUBAI

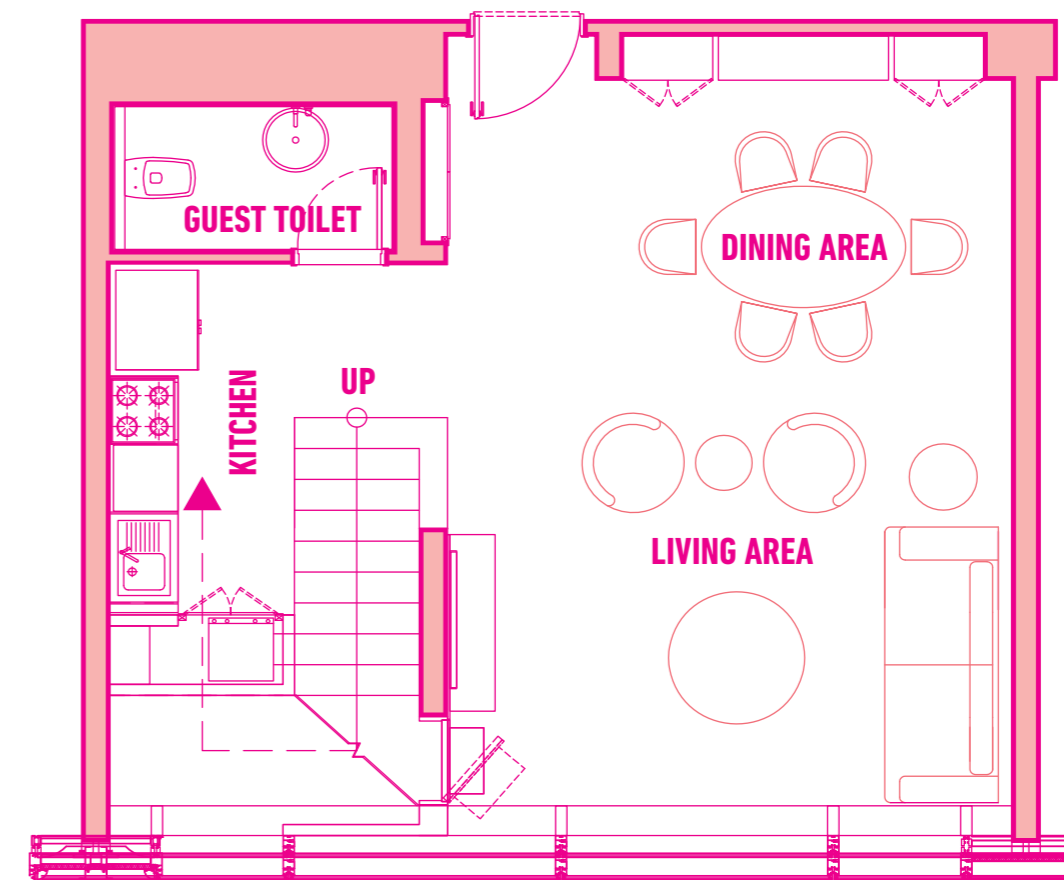


DUBAI CREEK

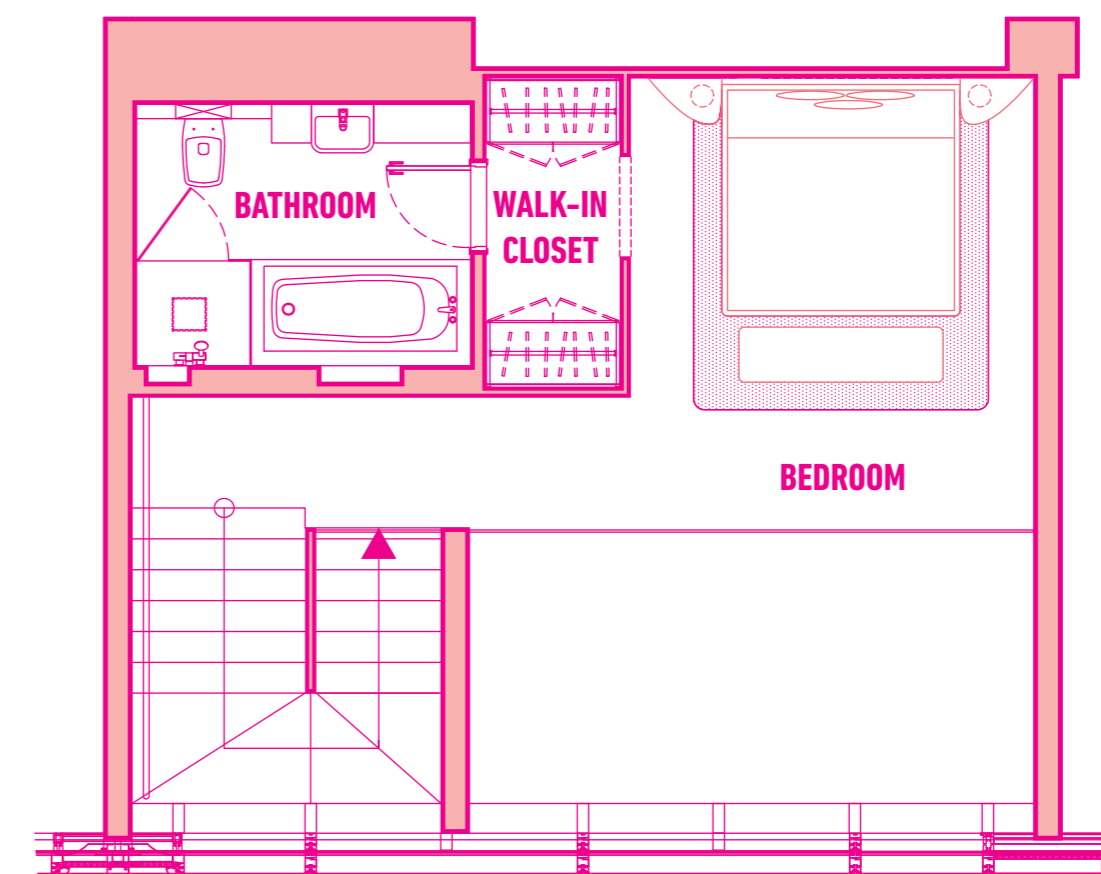
UNICO ONE BEDROOM LOFT

VIEW: BURJ KHALIFA OR DUBAI CREEK VIEW
CAR PARK: 1NO.
SIZE: 1185 SF

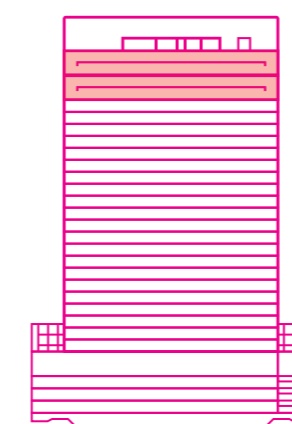
GROUND FLOOR



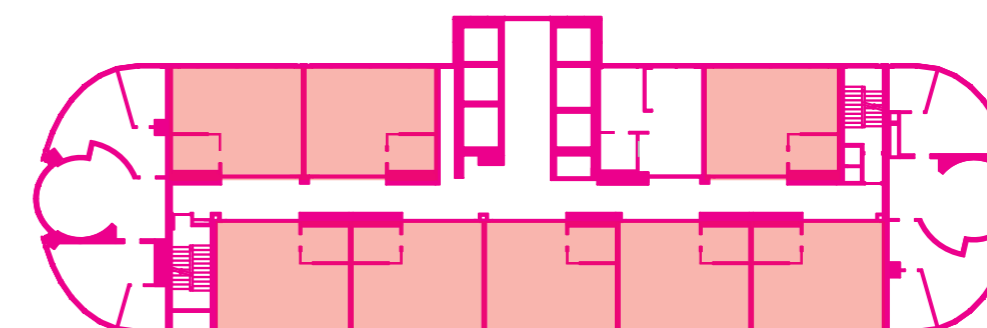
MEZZANINE



BURJ KHALIFA & DOWNTOWN DUBAI



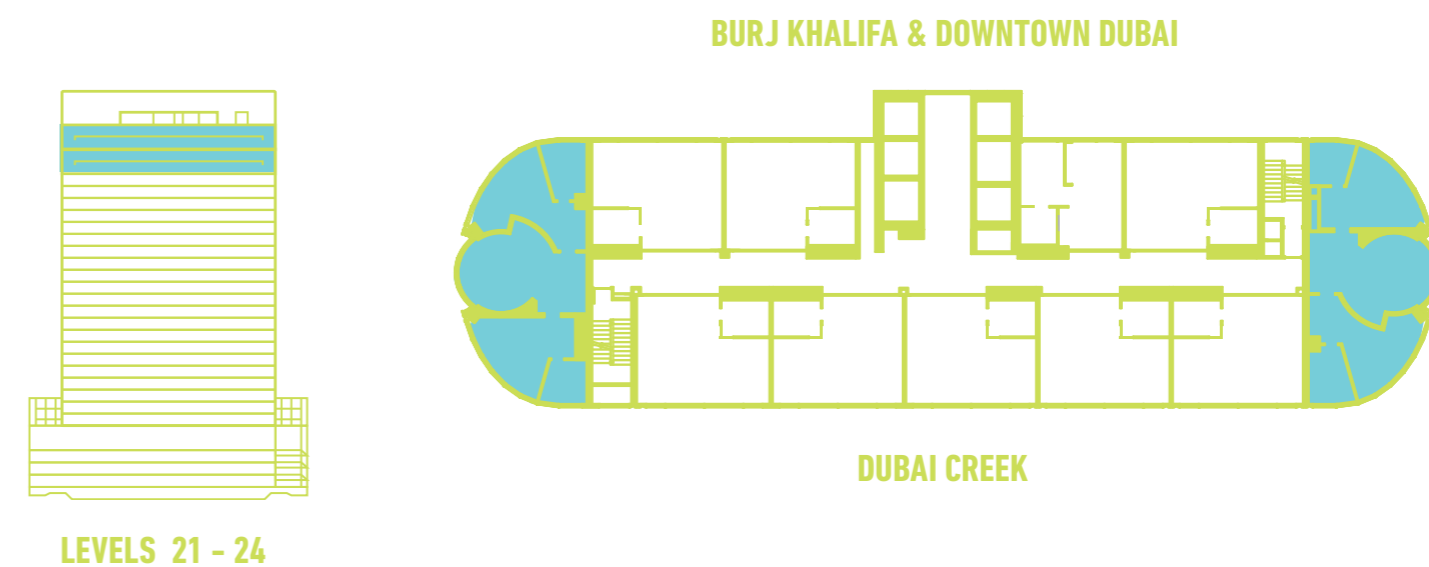
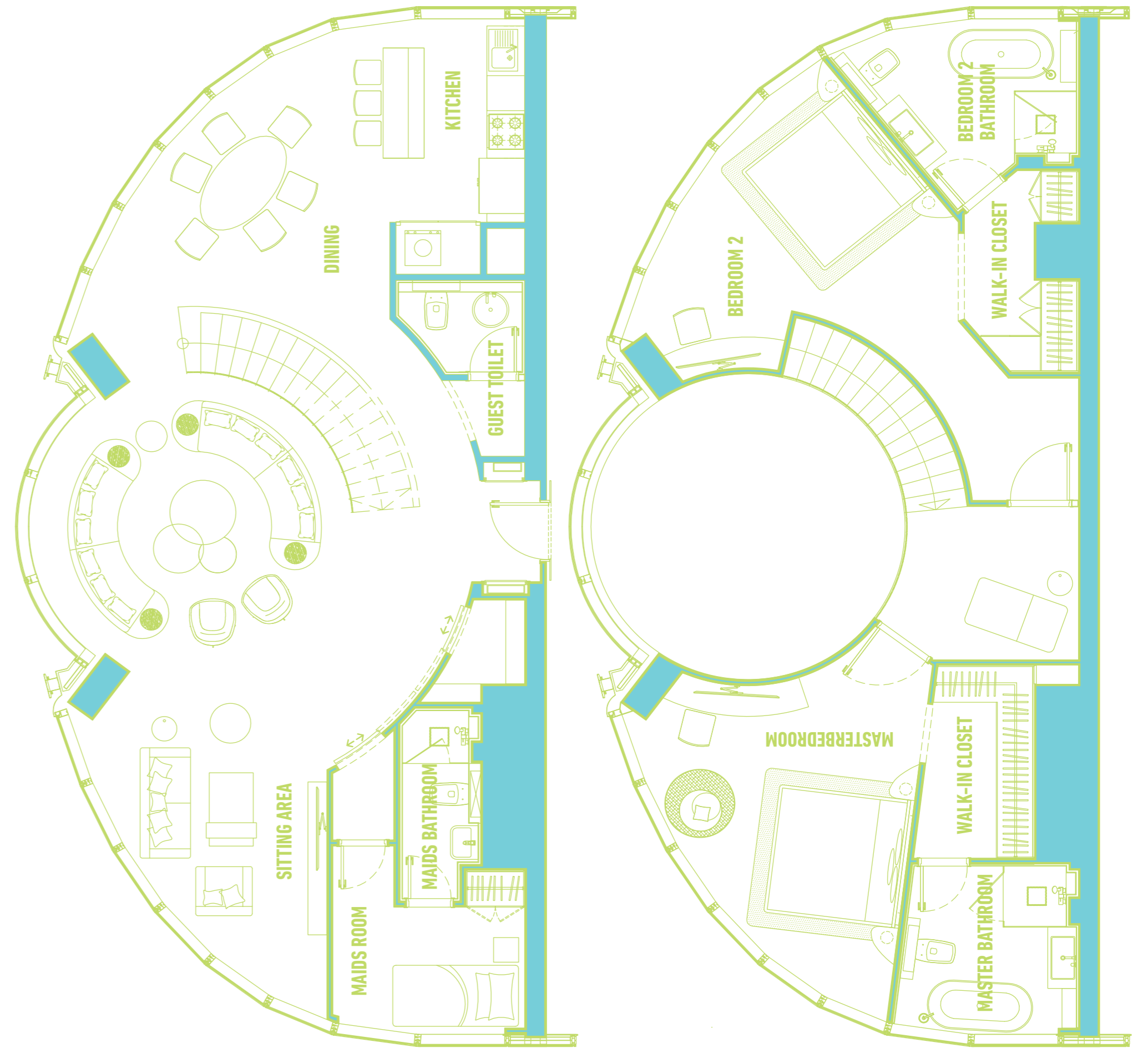
LEVELS 21 - 24



DUBAI CREEK

BUENA VISTA TWO BEDROOM LOFT

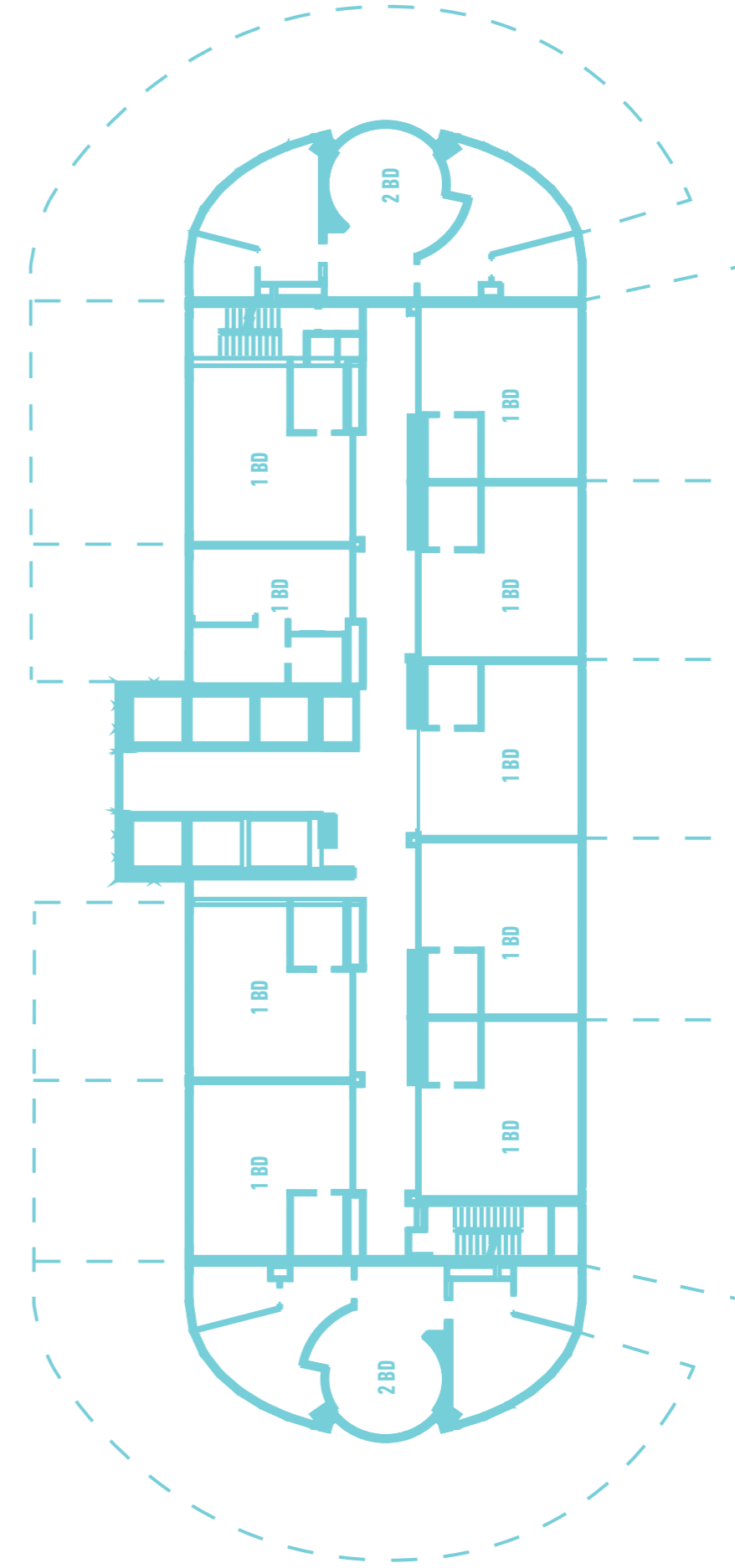
VIEW: BURJ KHALIFA & DUBAI CREEK VIEW
CAR PARK: 1NO.
SIZE: 2435 SF



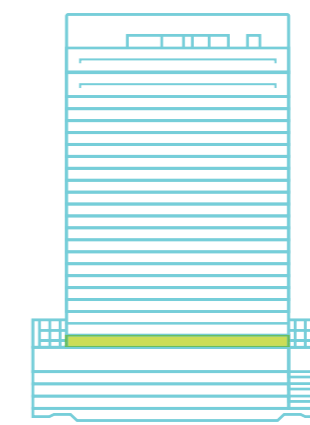
LEVELS 21 - 24

SUNNY GARDENS

BURJ KHALIFA & DOWNTOWN DUBAI



DUBAI CREEK



PODIUM LEVEL

OMNIYAT

ONE
BY OMNIYAT



ABOUT OMNIYAT

A tour de force, Omniyat is regarded as one of the most visionary and innovative premium development brands in the Gulf region.

Led by Mr. Mahdi Amjad, Executive Chairman and CEO, Omniyat works with the world's most respected architects, specialty consultants and contractors to create iconic properties – both commercial and residential – that push the limits of what is possible.

Launched in 2005, Omniyat's main focus is to generate superior value proposition and yield high returns while delivering projects that cater to the needs of both business and leisure clients. The total value of Omniyat's portfolio is USD 4.4 billion.



ANWA

Bringing back the glamour and class of grand Transatlantic cruise voyages of the 20's, ANWA by Omniyat is Dubai Maritime City's foremost residential project.

ANWA will feature endless views of the ocean at every floor. Dressed to perfection, each apartment will include open spaces to inspire ultimate elegance and breezy living.

At ANWA, the night will be yours. apartment.

ONE AT PALM

ONE at Palm Jumeirah is the nirvana of modern day real estate.

Crafted for the most privileged of the privileged few. On the world's premier man-made island, this is where every man is an island.

Designed by the award winning New Yorker firm SOMA Architects, ONE is an eye-catching architectural statement that draws reality to the ethereal. Japanese interior design firm Super Potato harnesses imagination through their tactile approach of utilizing different materials. Every unit becomes a statement of personal taste and rigor furnished by high-end design pieces from Super Potato. Celebrity landscape artist Vladimir Djurovic's exclusive vision permeates the elements of earth, air, fire and water furthering his zen-at-every-turn concept.





THE STERLING

This is the members-only club for those who know how to make it big.

Conveniently placed in Dubai's Burj Khalifa District, The Sterling by Omniyat is a residential project that consists of two gleaming towers and the connecting halls that make up the lobby, retail spaces and elevated gardens. Its intelligent architecture and crafted interior design converge to create the ideal destination for globetrotting connoisseurs of fine living.

THE OPUS

This is the building that never sleeps. The Opus by Omniyat is the first foray into Dubai by the world-famous architect Dame Zaha Hadid and a destination in its own right.

With an organic void right at the heart of the building, it is an architectural wonder made of engineering at its most impressive. Located in Dubai's Burj Khalifa district, The Opus combines a variety of residences and a design hotel operated by the leading hotelier group ME by Melia Hotels International.



CONTACT US

For more information

please call /WhatsAppTrupti Nair on 00971 507851492

Email: trupti@homeloungeuae.com

THE PAD

BY OMNIYAT