



ROYAL GOLF
BOUTIQUE VILLAS
JUMEIRAH GOLF ESTATES

SERVICED AND FURNISHED

THE ENCHANTMENT OF SPANISH
ARCHITECTURE. THE ALLURE OF
WORLD-CLASS AMENITIES. NOW
ALL YOURS TO EXPERIENCE.





FURNISHED AND READY FOR LIVING

The Royal Golf Boutique Villas are set within the Wildflower District of Jumeirah Golf Estates. Each home is tastefully furnished, with open plan living arrangements, in a variety of sizes to suit your needs. The only thing missing is you.

Disclaimer: Unless stated otherwise, all accessories and interior finishes such as wallpaper, chandeliers, furniture, electronics, white goods, curtains, hard and soft landscaping, pavements, features, swimming pool(s) and other elements displayed in the brochure, or within the show apartment or between the plot boundary and the unit, are not part of the standard unit and are shown for illustrative purposes only.



SERVICE THAT'S ABOVE AND BEYOND

The Royal Golf Boutique Villas come with a full complement of hospitality services. Our dedicated team is available 24 hours a day to take care of you and add that special touch to your living experience.



ACTUAL IMAGE OF SHOW VILLA

JOIN A UNIQUE RENTAL POOL

When you purchase a luxury Royal Golf Boutique Villa, you can choose to be part of our Rental Pool, managed exclusively by our team of hospitality specialists. This means that as an owner, you can earn rental income from your property when you're not staying there yourself.



AN EXTRAORDINARY ESTATE

Easily one of the world's most prestigious residential golf communities, Jumeirah Golf Estates is a luxury development with golf courses inspired by the natural elements of fire and earth.

A gated community featuring individually designed homes set amid stunning landscapes, the Jumeirah Golf Estates community blends all the accoutrements of modern living with the beauty of Mother Nature.



AN ENCHANTING EXPERIENCE

Enter your villa and prepare to be enthralled. Each detail is the epitome of historic Spanish architecture. From the terracotta tiles to cast concrete ornaments, all are manifestations of a glorious bygone era.

Finer details include gently pitched tiled roofs, smooth plastered walls, arched door and window openings, tall double-hung windows, canvas awnings and decorative iron-work. To complete the experience, homes are set amidst abundant foliage and around the spectacular golf course.



A LEGENDARY LIFESTYLE

Inspired by European and North American parklands, the course is landscaped with dense vegetation, punctuated by striking water features, to create an oasis of natural beauty. A perfect backdrop to the classical Spanish architecture of the homes, the Earth golf course has been carefully designed to enhance the natural beauty of its surroundings.



A LIVING LUXURY

Each Royal Golf Boutique Villa looks out across the prestigious neighbourhood and truly exemplifies a regal lifestyle.

Take a stroll through the palatial living rooms that open out into a beautiful central courtyard; or enjoy al fresco breakfasts with stunning golf course views, across lush landscaped gardens. Later, immerse yourself in a good book in the study and follow on with a fine meal in the stately dining room.

Disclaimer: Unless stated otherwise, all accessories and interior finishes such as wallpaper, chandeliers, furniture, electronics, white goods, curtains, hard and soft landscaping, pavements, features, swimming pool(s) and other elements displayed in the brochure, or within the show apartment or between the plot boundary and the unit, are not part of the standard unit and are shown for illustrative purposes only.



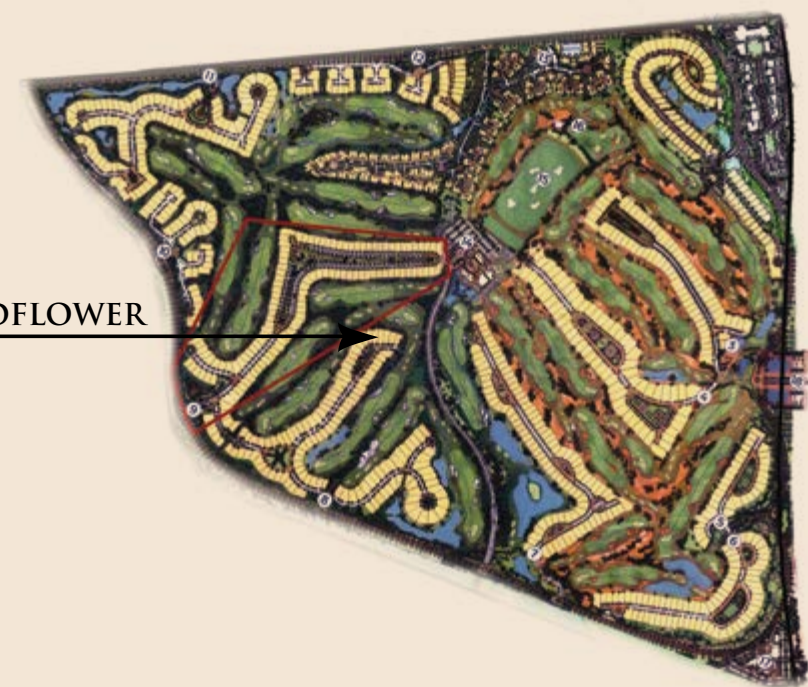
SPECTACULAR SLUMBER

Imagine waking up every morning in the most perfect bedroom. Open the doors, walk out on to the terrace and begin your day with breathtaking golf course views.

Bedrooms feature walk-in closets, sizeable en-suite bathrooms, along with lounge areas, perfect for some quiet 'me time'.

Disclaimer: Unless stated otherwise, all accessories and interior finishes such as wallpaper, chandeliers, furniture, electronics, white goods, curtains, hard and soft landscaping, pavements, features, swimming pool(s) and other elements displayed in the brochure, or within the show apartment or between the plot boundary and the unit, are not part of the standard unit and are shown for illustrative purposes only.

WILDFLOWER



AN INSPIRING LOCATION

Such a gloriously serene location and yet Jumeirah Golf Estates is surprisingly close to the excitement of the city.

This prestigious property is a few minutes away from Dubai's landmark locations such as Palm Jumeirah, Dubai Marina, Dubai Parks and Resorts and prominent business hubs. A 10-minute drive will take you right into the heart of the city where an array of shopping, leisure and entertainment awaits.





VILLA TYPE A

This villa type offers five bedrooms, along with three reception rooms. Ideally set on plots of over 600 square metres, these villas have a built-up area of over 480 square metres. Each villa is individually designed to efficiently utilise the available space and natural light, while being perfectly aligned with the golf course.

TYPE A
GROUND FLOOR



TYPE A
FIRST FLOOR



*Unless stated above, all accessories and interior finishes such as wallpaper, chandeliers, furniture, electronics, white goods, curtains, hard and soft landscaping, pavements, features, swimming pool(s) and other elements displayed in the brochure, or within the show apartment / villa or between the plot boundary and the unit, are not part of the standard unit and exhibited for illustrative purposes only.



VILLA TYPE B

This villa type offers five to seven bedrooms, along with four reception rooms. Set on plots of over 700 square metres, these villas have a built-up area of over 560 square metres. Each villa is individually designed with features such as courtyards, balconies and patios to maximise space inside and out.

TYPE B
GROUND FLOOR



TYPE B
FIRST FLOOR



*Unless stated above, all accessories and interior finishes such as wallpaper, chandeliers, furniture, electronics, white goods, curtains, hard and soft landscaping, pavements, features, swimming pool(s) and other elements displayed in the brochure, or within the show apartment / villa or between the plot boundary and the unit, are not part of the standard unit and exhibited for illustrative purposes only.



VILLA TYPE C

This villa type offers four to five bedrooms, along with four reception rooms. Located on plots of over 730 square metres, these villas have a built-up area of over 560 square metres. Each villa is individually designed with unique features such as spiral staircases, marble flooring and contemporary stonework.

TYPE C
GROUND FLOOR



TYPE C
FIRST FLOOR



*Unless stated above, all accessories and interior finishes such as wallpaper, chandeliers, furniture, electronics, white goods, curtains, hard and soft landscaping, pavements, features, swimming pool(s) and other elements displayed in the brochure, or within the show apartment / villa or between the plot boundary and the unit, are not part of the standard unit and exhibited for illustrative purposes only.



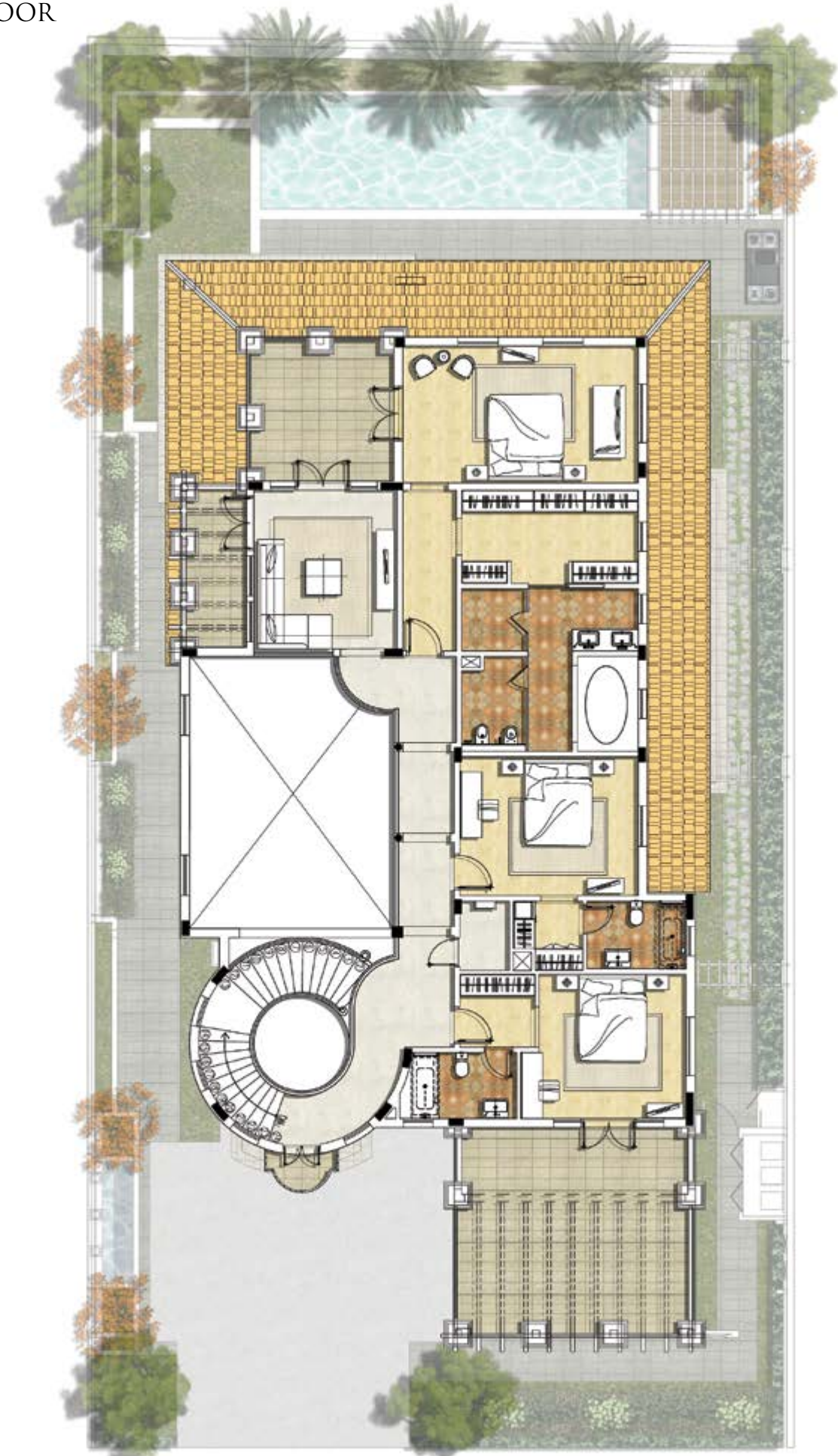
VILLA TYPE D

This villa type offers four to six bedrooms, along with four reception rooms. Nestled on plots of over 700 square metres, these villas have a built-up area of over 800 square metres. Each villa overlooks the lush fairways of the golf course and their design includes wooden verandas and courtyard features to enhance the striking views.

TYPE D
GROUND FLOOR



TYPE D
FIRST FLOOR



*Unless stated above, all accessories and interior finishes such as wallpaper, chandeliers, furniture, electronics, white goods, curtains, hard and soft landscaping, pavements, features, swimming pool(s) and other elements displayed in the brochure, or within the show apartment / villa or between the plot boundary and the unit, are not part of the standard unit and exhibited for illustrative purposes only.



VILLA TYPE E

This villa type offers six to seven bedrooms, along with five reception rooms. Picturesquely set on 1,200-square-metre plots, these mansions have a built-up area of 960 square metres, each of which is tastefully designed to truly represent a distinguished lifestyle.

TYPE E
GROUND FLOOR



TYPE E
FIRST FLOOR



*Unless stated above, all accessories and interior finishes such as wallpaper, chandeliers, furniture, electronics, white goods, curtains, hard and soft landscaping, pavements, features, swimming pool(s) and other elements displayed in the brochure, or within the show apartment / villa or between the plot boundary and the unit, are not part of the standard unit and exhibited for illustrative purposes only.

DAMAC PROPERTIES

Live the luxury

The superior design and details of DAMAC developments are a result of working with the finest craftsmen and women as well as partnering with some of the most prestigious fashion and lifestyle brands to bring new and exciting living concepts to the market.

To date, the Company has completed 16,800 units and currently has a development portfolio of over 44,000 units at various stages of planning and progress. DAMAC Properties' hospitality portfolio will extend to reach around 13,000 hotel rooms, serviced hotel apartments and serviced villas.*

*Figures as of 30th September 2016.

LUXURY BY DESIGN

For more information

please call /WhatsApp Trupti Nair on 00971 507851492

Email: trupti@homeloungeuae.com

DAMAC
LIVE THE LUXURY