

The logo consists of a circular emblem containing the stylized letters 'D1'. To the right of the emblem, the word 'DISTRICT' is written in a small, bold, sans-serif font. Below 'DISTRICT', the word 'ONE' is written in a large, bold, sans-serif font. To the right of 'ONE', the word 'RESIDENCES' is written in a large, elegant, serif font.

# DISTRICT **ONE** RESIDENCES

[DISTRICT1.COM](http://DISTRICT1.COM)



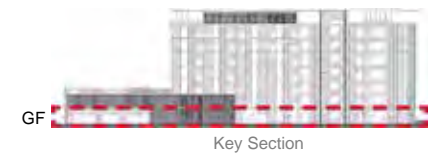
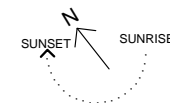
# G+6 Apartments

## Ground Floor

1, 2 and 3 Bedroom Apartments



MOHAMMED BIN RASHID  
AL MAKTOUM CITY  
DISTRICT ONE



DISCLAIMER: All measurements, dimensions, coordinates and drawings given as the Floor Plans in this literature are approximate and provided only for the purpose of marketing, illustration, information and general guidance as such drawings are not to scale. All the rooms, swimming pool, sizes, locations, orientations, dimensions, fixtures, fittings, finishes and specifications (including materials for, placement, size of rooms, windows, doors, balcony, furniture's, inbuilt wardrobe etc.) provided in the floor plans may vary as the same have been taken from concept designs prior to the actual development/construction and therefore their accuracy in relation to actual construction cannot be confirmed. Hence, we make no guarantee, warranty or representation as to the accuracy and completeness of the Floor plan information as changes may be made during the development process, without notice. Always refer to latest IFC design available in the sales office for the most accurate representation of all construction details

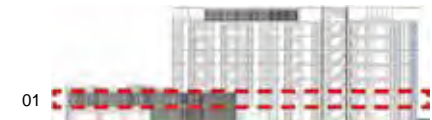
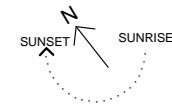
# G+6 Apartments

## 1st Floor

1, 2 and 3 Bedroom Apartments



MOHAMMED BIN RASHID  
AL MAKTOUM CITY  
DISTRICT ONE



Key Section

DISCLAIMER: All measurements, dimensions, coordinates and drawings given as the Floor Plans in this literature are approximate and provided only for the purpose of marketing, illustration, information and general guidance as such drawings are not to scale. All the rooms, swimming pool, sizes, locations, orientations, dimensions, fixtures, fittings, finishes and specifications (including materials for, placement, size of rooms, windows, doors, balcony, furniture's, inbuilt wardrobe etc.) provided in the floor plans may vary as the same have been taken from concept designs prior to the actual development/construction and therefore their accuracy in relation to actual construction cannot be confirmed. Hence, we make no guarantee, warranty or representation as to the accuracy and completeness of the Floor plan information as changes may be made during the .development process, without notice. Always refer to latest IFC design available in the sales office for the most accurate representation of all construction details



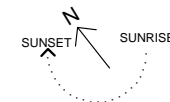
# G+6 Apartments

## 2nd Floor

1, 2 and 3 Bedroom Apartments



MOHAMMED BIN RASHID  
AL MAKTOUM CITY  
DISTRICT ONE



Key Section

DISCLAIMER: All measurements, dimensions, coordinates and drawings given as the Floor Plans in this literature are approximate and provided only for the purpose of marketing, illustration, information and general guidance as such drawings are not to scale. All the rooms, swimming pool, sizes, locations, orientations, dimensions, fixtures, fittings, finishes and specifications (including materials for, placement, size of rooms, windows, doors, balcony, furniture's, inbuilt wardrobe etc.) provided in the floor plans may vary as the same have been taken from concept designs prior to the actual development/construction and therefore their accuracy in relation to actual construction cannot be confirmed. Hence, we make no guarantee, warranty or representation as to the accuracy and completeness of the Floor plan information as changes may be made during the .development process, without notice. Always refer to latest IFC design available in the sales office for the most accurate representation of all construction details

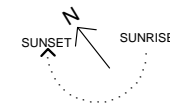
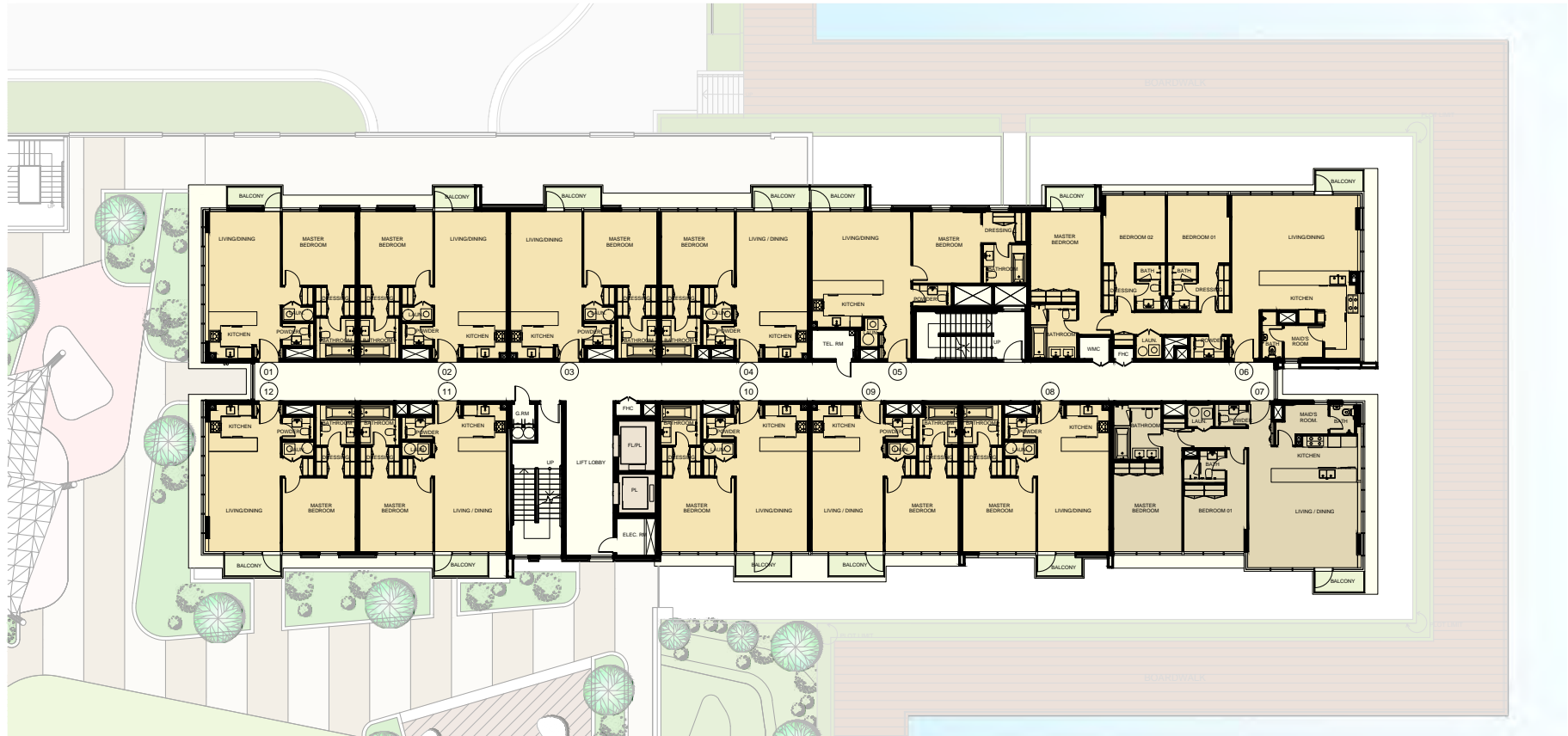
# G+6 Apartments

## 3rd to 6th Floor

1, 2 and 3 Bedroom Apartments



MOHAMMED BIN RASHID  
AL MAKTOUM CITY  
DISTRICT ONE



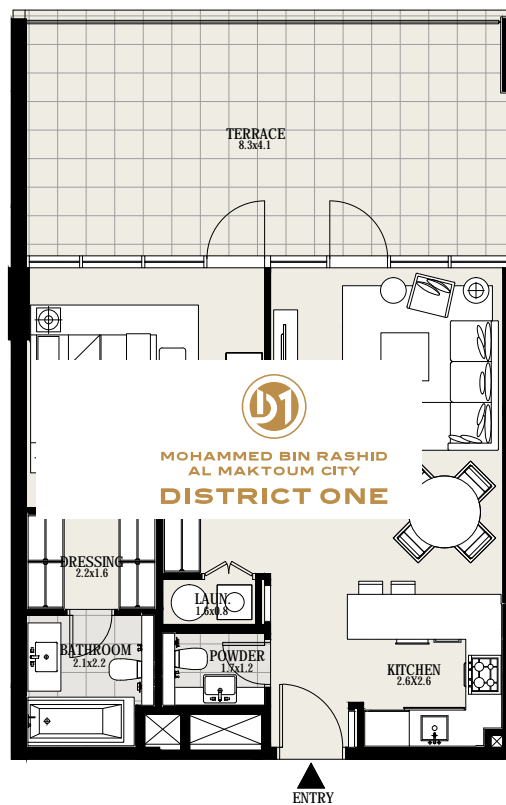
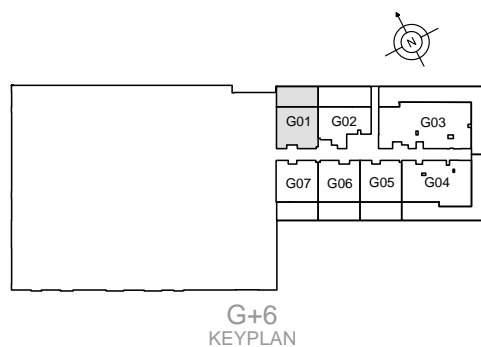
Key Section

DISCLAIMER: All measurements, dimensions, coordinates and drawings given as the Floor Plans in this literature are approximate and provided only for the purpose of marketing, illustration, information and general guidance as such drawings are not to scale. All the rooms, swimming pool, sizes, locations, orientations, dimensions, fixtures, fittings, finishes and specifications (including materials for, placement, size of rooms, windows, doors, balcony, furniture's, inbuilt wardrobe etc.) provided in the floor plans may vary as the same have been taken from concept designs prior to the actual development/construction and therefore their accuracy in relation to actual construction cannot be confirmed. Hence, we make no guarantee, warranty or representation as to the accuracy and completeness of the Floor plan information as changes may be made during the .development process, without notice. Always refer to latest IFC design available in the sales office for the most accurate representation of all construction details

## 1 BEDROOM

### UNIT G01 | GROUND FLOOR

Suite Area	706 sq. ft
Terrace Area	353 sq. ft
Total Area	1059 sq. ft



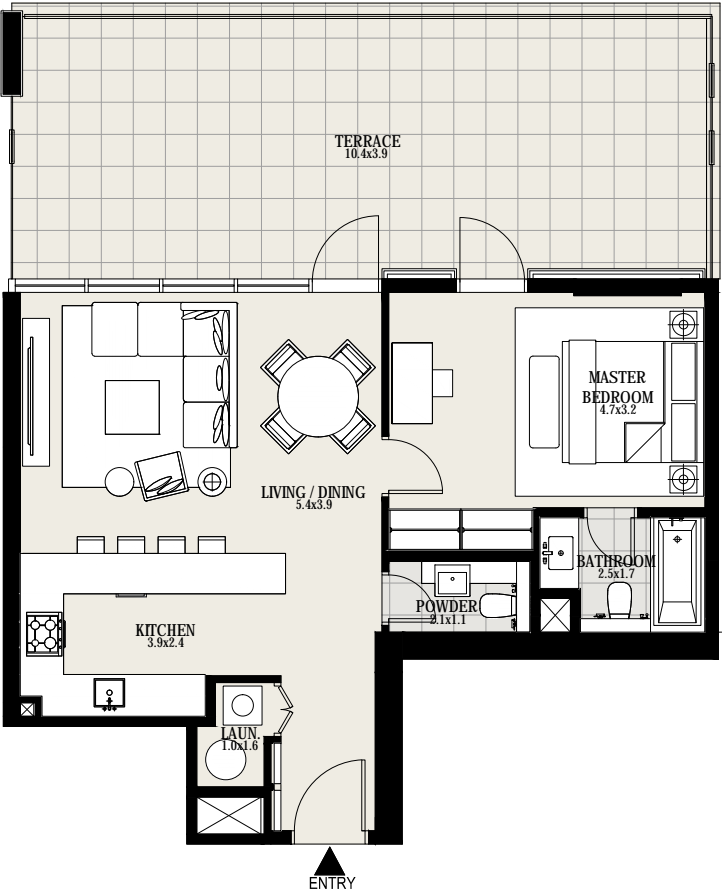
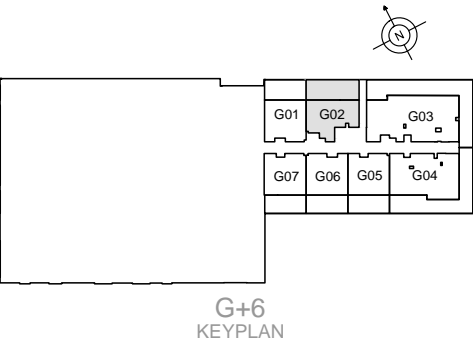
MOHAMMED BIN RASHID  
AL MAKTOUN CITY  
**DISTRICT ONE**

DISCLAIMER: All measurements, dimensions, coordinates and drawings given as the Floor Plans in this literature are approximate and provided only for the purpose of marketing, illustration, information and general guidance as such drawings are not to scale. All the rooms, swimming pool, sizes, locations, orientations, dimensions, fixtures, fittings, finishes and specifications (including materials for, placement, size of rooms, windows, doors, balcony, furniture's, inbuilt wardrobe etc.) provided in the floor plans may vary as the same have been taken from concept designs prior to the actual development/construction and therefore their accuracy in relation to actual construction cannot be confirmed. Hence, we make no guarantee, warranty or representation as to the accuracy and completeness of the Floor plan information as changes may be made during the .development process, without notice. Always refer to latest IFC design available in the sales office for the most accurate representation of all construction details

1 BEDROOM

UNIT G02 | GROUND FLOOR

Suite Area	707 sq. ft
Terrace Area	448 sq. ft
Total Area	1155 sq. ft



MOHAMMED BIN RASHID  
AL MAKTUUM CITY  
**DISTRICT ONE**

DISCLAIMER: All measurements, dimensions, coordinates and drawings given as the Floor Plans in this literature are approximate and provided only for the purpose of marketing, illustration, information and general guidance as such drawings are not to scale. All the rooms, swimming pool, sizes, locations, orientations, dimensions, fixtures, fittings, finishes and specifications (including materials for, placement, size of rooms, windows, doors, balcony, furniture's, inbuilt wardrobe etc.) provided in the floor plans may vary as the same have been taken from concept designs prior to the actual development/construction and therefore their accuracy in relation to actual construction cannot be confirmed. Hence, we make no guarantee, warranty or representation as to the accuracy and completeness of the Floor plan information as changes may be made during the .development process, without notice. Always refer to latest IFC design available in the sales office for the most accurate representation of all construction details



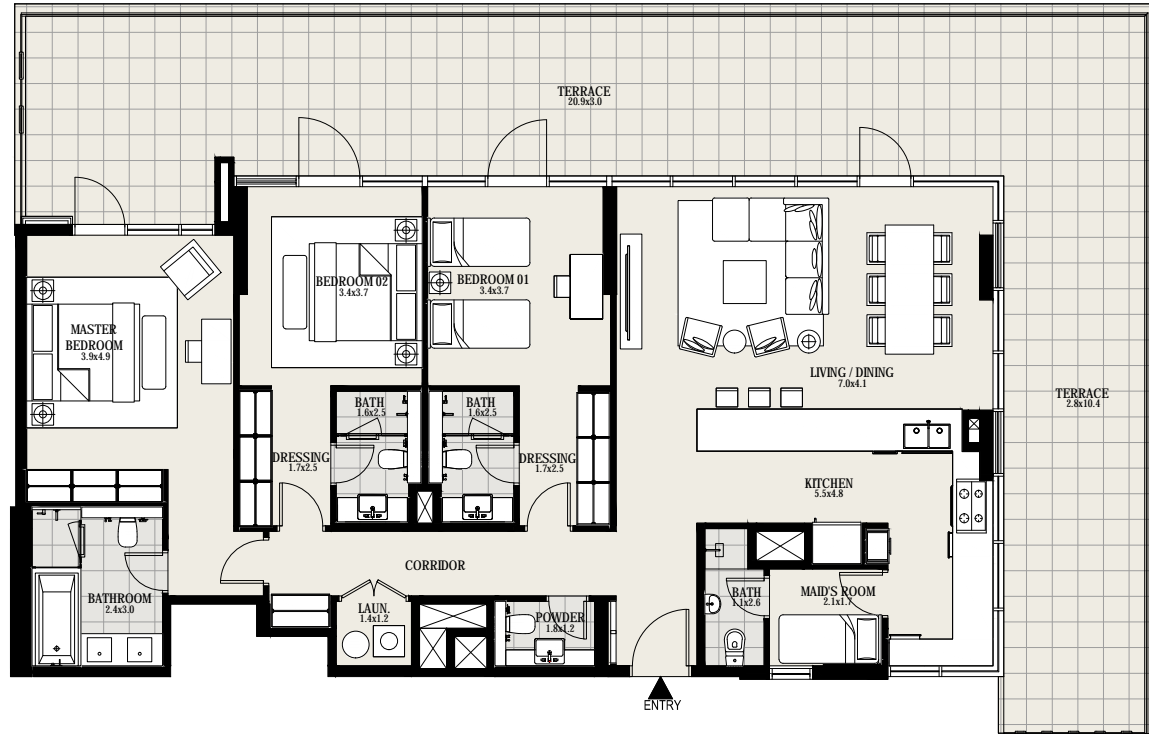
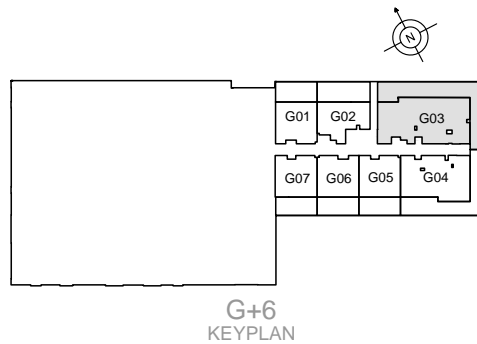
## 3 BEDROOMS



MOHAMMED BIN RASHID  
AL MAKTOUM CITY  
**DISTRICT ONE**

### UNIT G03 | GROUND FLOOR

Suite Area	1668 sq. ft
Terrace Area	1040 sq. ft
Total Area	2708 sq. ft



DISCLAIMER: All measurements, dimensions, coordinates and drawings given as the Floor Plans in this literature are approximate and provided only for the purpose of marketing, illustration, information and general guidance as such drawings are not to scale. All the rooms, swimming pool, sizes, locations, orientations, dimensions, fixtures, fittings, finishes and specifications (including materials for, placement, size of rooms, windows, doors, balcony, furniture's, inbuilt wardrobe etc.) provided in the floor plans may vary as the same have been taken from concept designs prior to the actual development/construction and therefore their accuracy in relation to actual construction cannot be confirmed. Hence, we make no guarantee, warranty or representation as to the accuracy and completeness of the Floor plan information as changes may be made during the development process, without notice. Always refer to latest IFC design available in the sales office for the most accurate representation of all construction details

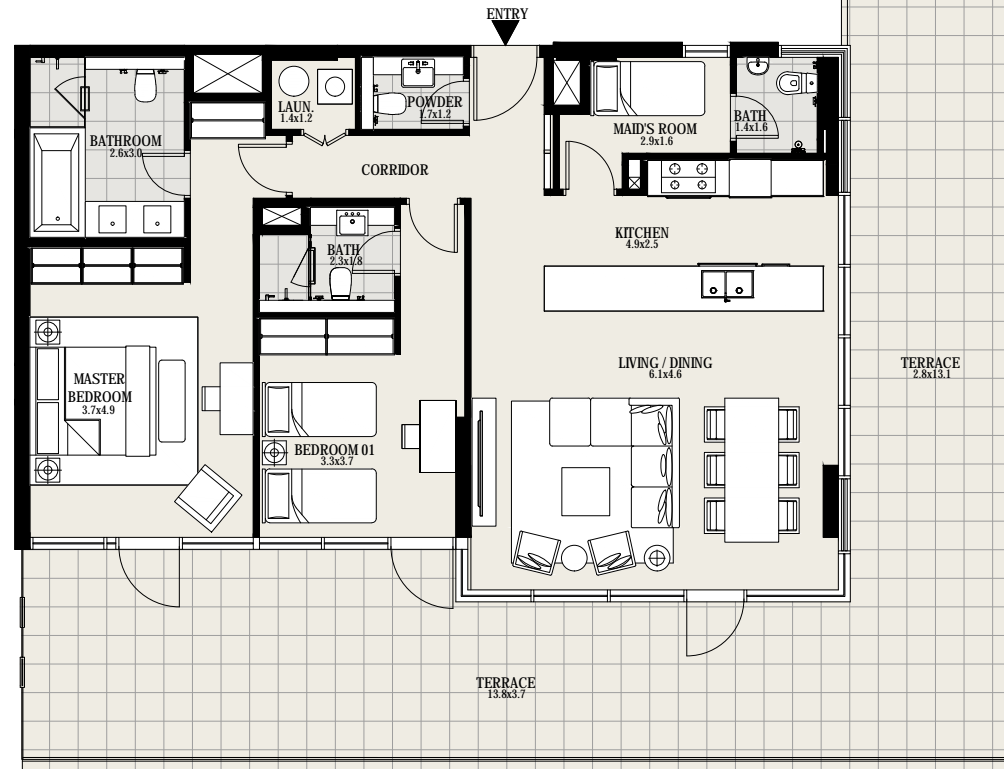
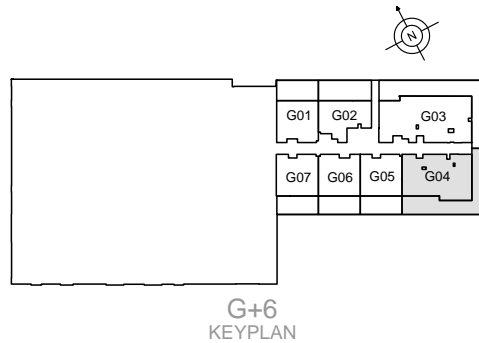
## 2 BEDROOMS

### UNIT G04 | GROUND FLOOR

Suite Area	1247 sq. ft
Terrace Area	847 sq. ft
Total Area	2094 sq. ft



MOHAMMED BIN RASHID  
AL MAKTOUM CITY  
**DISTRICT ONE**



**DISCLAIMER:** All measurements, dimensions, coordinates and drawings given as the Floor Plans in this literature are approximate and provided only for the purpose of marketing, illustration, information and general guidance as such drawings are not to scale. All the rooms, swimming pool, sizes, locations, orientations, dimensions, fixtures, fittings, finishes and specifications (including materials for, placement, size of rooms, windows, doors, balcony, furniture's, inbuilt wardrobe etc.) provided in the floor plans may vary as the same have been taken from concept designs prior to the actual development/construction and therefore their accuracy in relation to actual construction cannot be confirmed. Hence, we make no guarantee, warranty or representation as to the accuracy and completeness of the Floor plan information as changes may be made during the .development process, without notice. Always refer to latest IFC design available in the sales office for the most accurate representation of all construction details

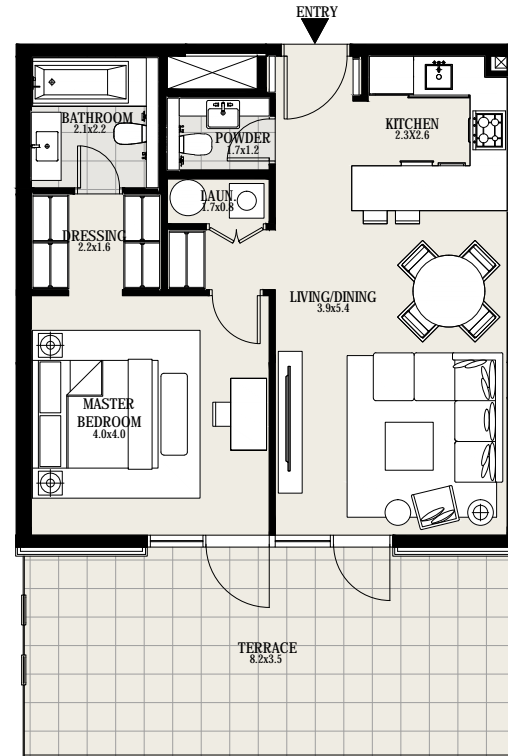
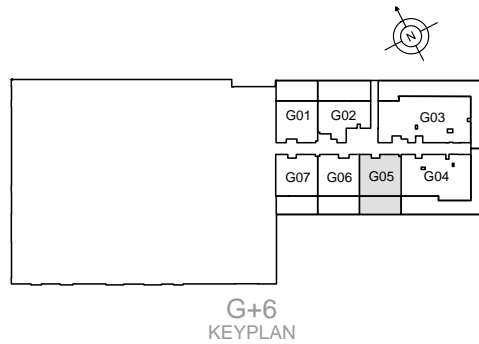
## 1 BEDROOM

### UNIT G05 | GROUND FLOOR

Suite Area	709 sq. ft
Terrace Area	318 sq. ft
Total Area	1027 sq. ft



MOHAMMED BIN RASHID  
AL MAKTUUM CITY  
**DISTRICT ONE**



**DISCLAIMER:** All measurements, dimensions, coordinates and drawings given as the Floor Plans in this literature are approximate and provided only for the purpose of marketing, illustration, information and general guidance as such drawings are not to scale. All the rooms, swimming pool, sizes, locations, orientations, dimensions, fixtures, fittings, finishes and specifications (including materials for, placement, size of rooms, windows, doors, balcony, furniture's, inbuilt wardrobe etc.) provided in the floor plans may vary as the same have been taken from concept designs prior to the actual development/construction and therefore their accuracy in relation to actual construction cannot be confirmed. Hence, we make no guarantee, warranty or representation as to the accuracy and completeness of the Floor plan information as changes may be made during the .development process, without notice. Always refer to latest IFC design available in the sales office for the most accurate representation of all construction details

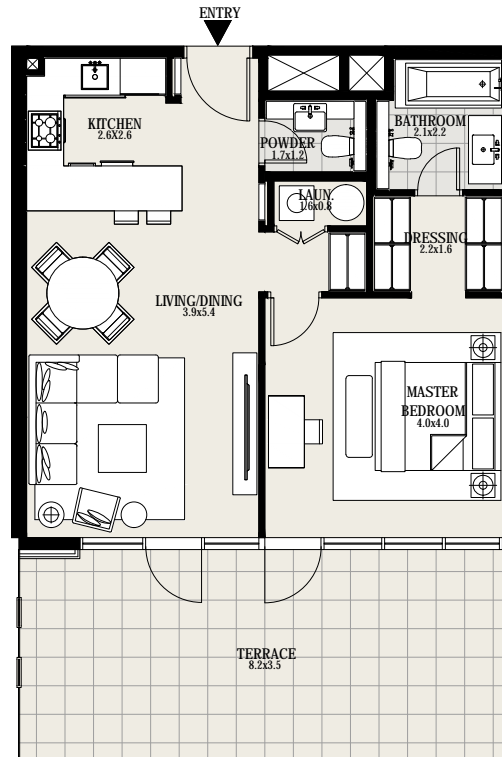
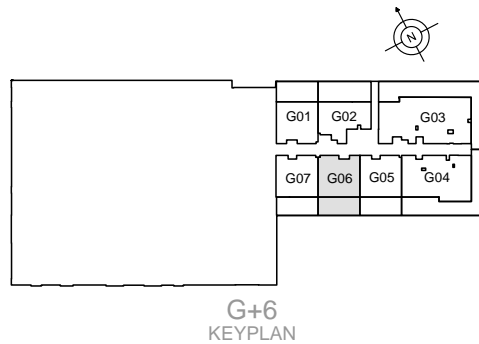
## 1 BEDROOM

### UNIT G06 | GROUND LEVEL

Suite Area	706 sq. ft
Terrace Area	318 sq. ft
Total Area	1024 sq. ft



MOHAMMED BIN RASHID  
AL MAKTOUM CITY  
**DISTRICT ONE**

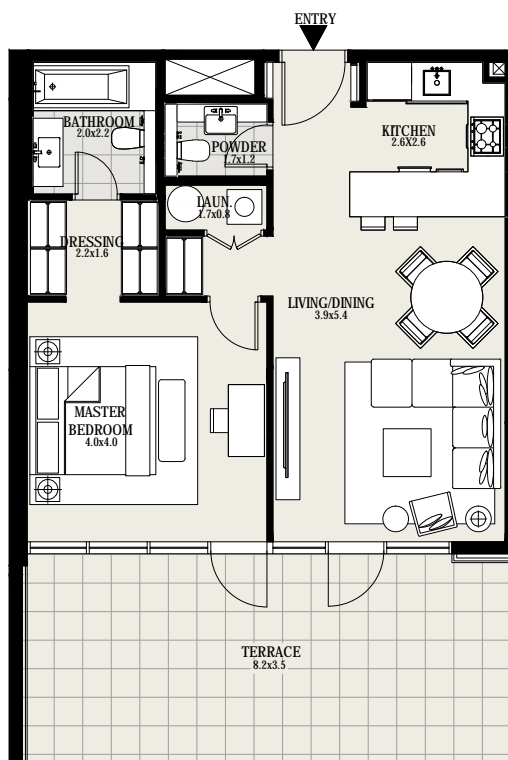
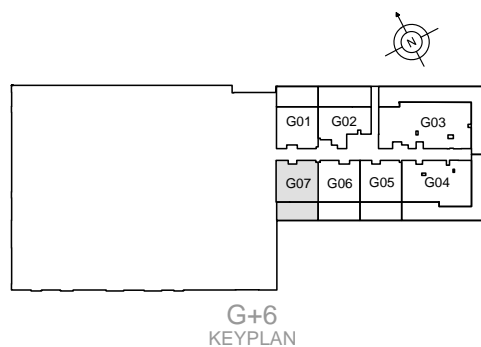


DISCLAIMER: All measurements, dimensions, coordinates and drawings given as the Floor Plans in this literature are approximate and provided only for the purpose of marketing, illustration, information and general guidance as such drawings are not to scale. All the rooms, swimming pool, sizes, locations, orientations, dimensions, fixtures, fittings, finishes and specifications (including materials for, placement, size of rooms, windows, doors, balcony, furniture's, inbuilt wardrobe etc.) provided in the floor plans may vary as the same have been taken from concept designs prior to the actual development/construction and therefore their accuracy in relation to actual construction cannot be confirmed. Hence, we make no guarantee, warranty or representation as to the accuracy and completeness of the Floor plan information as changes may be made during the .development process, without notice. Always refer to latest IFC design available in the sales office for the most accurate representation of all construction details

## 1 BEDROOM

### UNIT G07 | GROUND FLOOR

Suite Area	713 sq. ft
Terrace Area	323 sq. ft
Total Area	1036 sq. ft



MOHAMMED BIN RASHID  
AL MAKTUUM CITY  
**DISTRICT ONE**

DISCLAIMER: All measurements, dimensions, coordinates and drawings given as the Floor Plans in this literature are approximate and provided only for the purpose of marketing, illustration, information and general guidance as such drawings are not to scale. All the rooms, swimming pool, sizes, locations, orientations, dimensions, fixtures, fittings, finishes and specifications (including materials for, placement, size of rooms, windows, doors, balcony, furniture's, inbuilt wardrobe etc.) provided in the floor plans may vary as the same have been taken from concept designs prior to the actual development/construction and therefore their accuracy in relation to actual construction cannot be confirmed. Hence, we make no guarantee, warranty or representation as to the accuracy and completeness of the Floor plan information as changes may be made during the .development process, without notice. Always refer to latest IFC design available in the sales office for the most accurate representation of all construction details

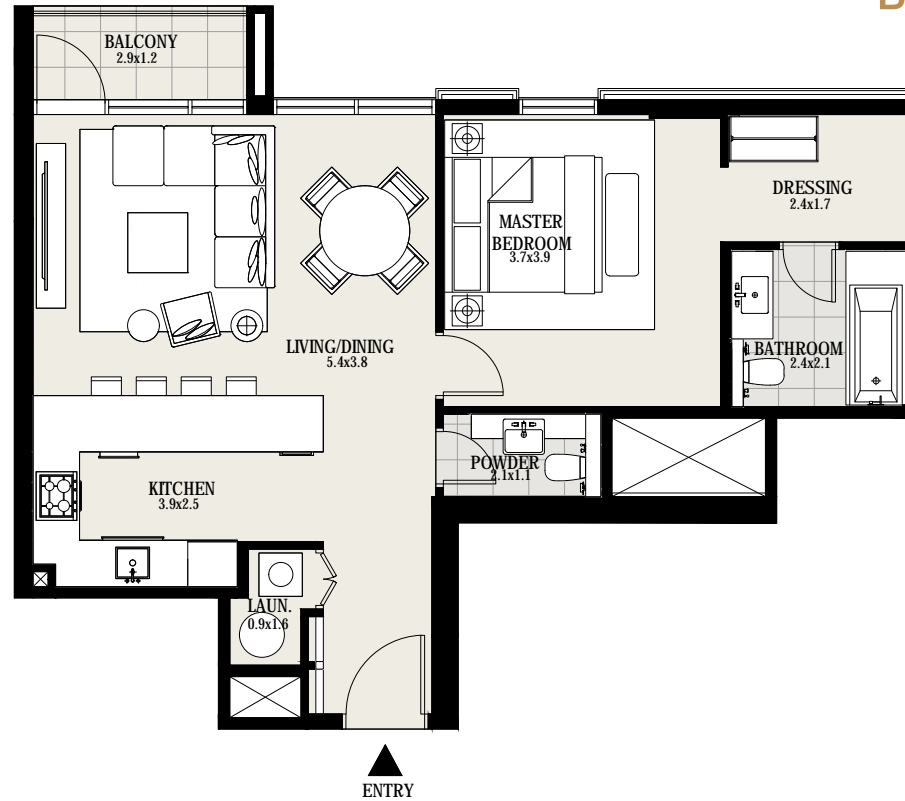
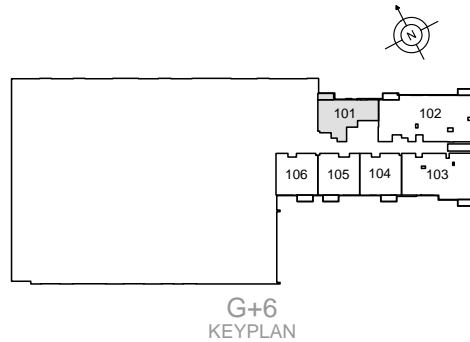
## 1 BEDROOM

### UNIT 101 | 1ST FLOOR

Suite Area	744 sq. ft
Balcony Area	42 sq. ft
Total Area	786 sq. ft



MOHAMMED BIN RASHID  
AL MAKTUUM CITY  
**DISTRICT ONE**



DISCLAIMER: All measurements, dimensions, coordinates and drawings given as the Floor Plans in this literature are approximate and provided only for the purpose of marketing, illustration, information and general guidance as such drawings are not to scale. All the rooms, swimming pool, sizes, locations, orientations, dimensions, fixtures, fittings, finishes and specifications (including materials for, placement, size of rooms, windows, doors, balcony, furniture's, inbuilt wardrobe etc.) provided in the floor plans may vary as the same have been taken from concept designs prior to the actual development/construction and therefore their accuracy in relation to actual construction cannot be confirmed. Hence, we make no guarantee, warranty or representation as to the accuracy and completeness of the Floor plan information as changes may be made during the .development process, without notice. Always refer to latest IFC design available in the sales office for the most accurate representation of all construction details



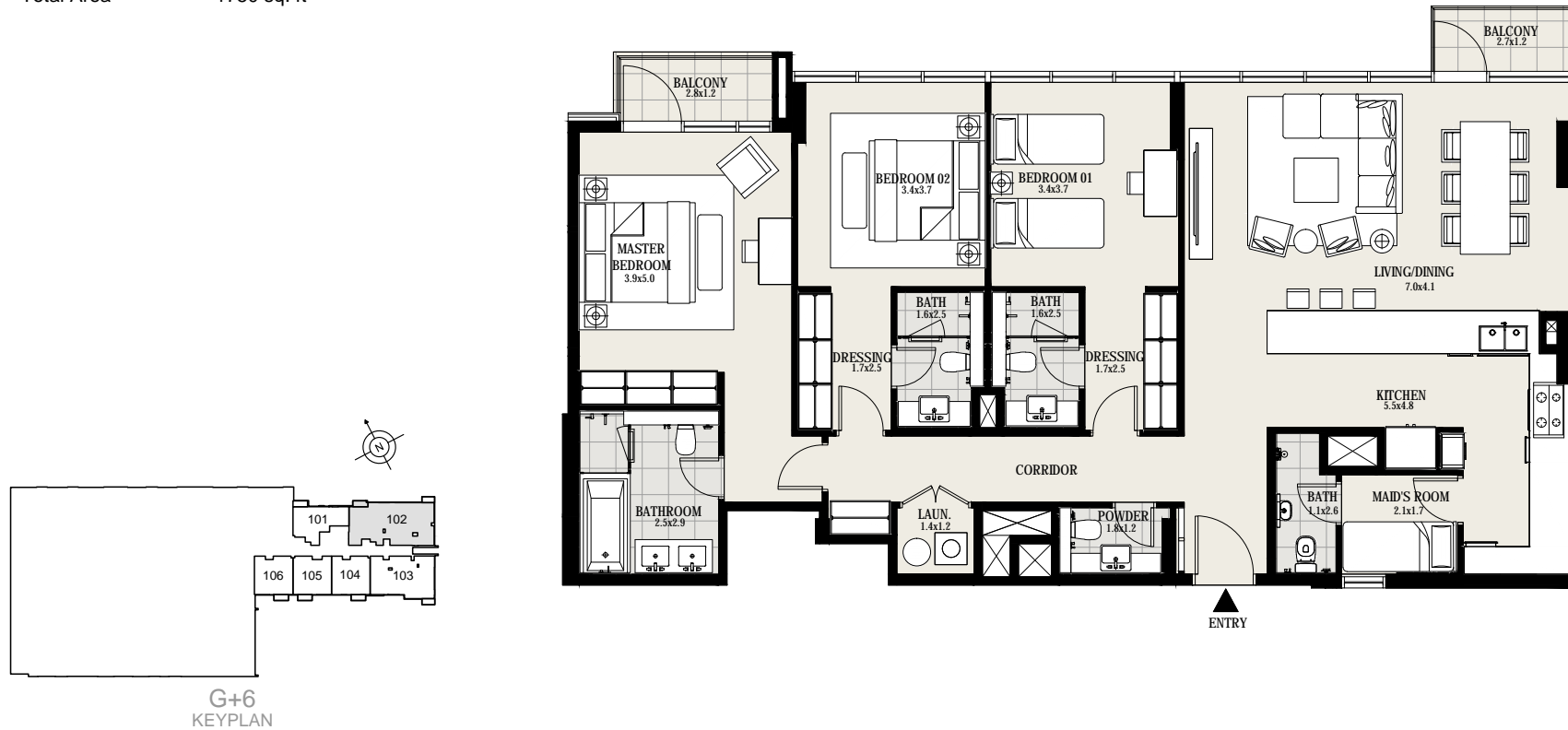
## 3 BEDROOMS

### UNIT 102 | 1ST FLOOR

Suite Area	1671 sq. ft
Balcony Area	79 sq. ft
Total Area	1750 sq. ft



MOHAMMED BIN RASHID  
AL MAKTOUM CITY  
**DISTRICT ONE**



**DISCLAIMER:** All measurements, dimensions, coordinates and drawings given as the Floor Plans in this literature are approximate and provided only for the purpose of marketing, illustration, information and general guidance as such drawings are not to scale. All the rooms, swimming pool, sizes, locations, orientations, dimensions, fixtures, fittings, finishes and specifications (including materials for, placement, size of rooms, windows, doors, balcony, furniture's, inbuilt wardrobe etc.) provided in the floor plans may vary as the same have been taken from concept designs prior to the actual development/construction and therefore their accuracy in relation to actual construction cannot be confirmed. Hence, we make no guarantee, warranty or representation as to the accuracy and completeness of the Floor plan information as changes may be made during the .development process, without notice. Always refer to latest IFC design available in the sales office for the most accurate representation of all construction details

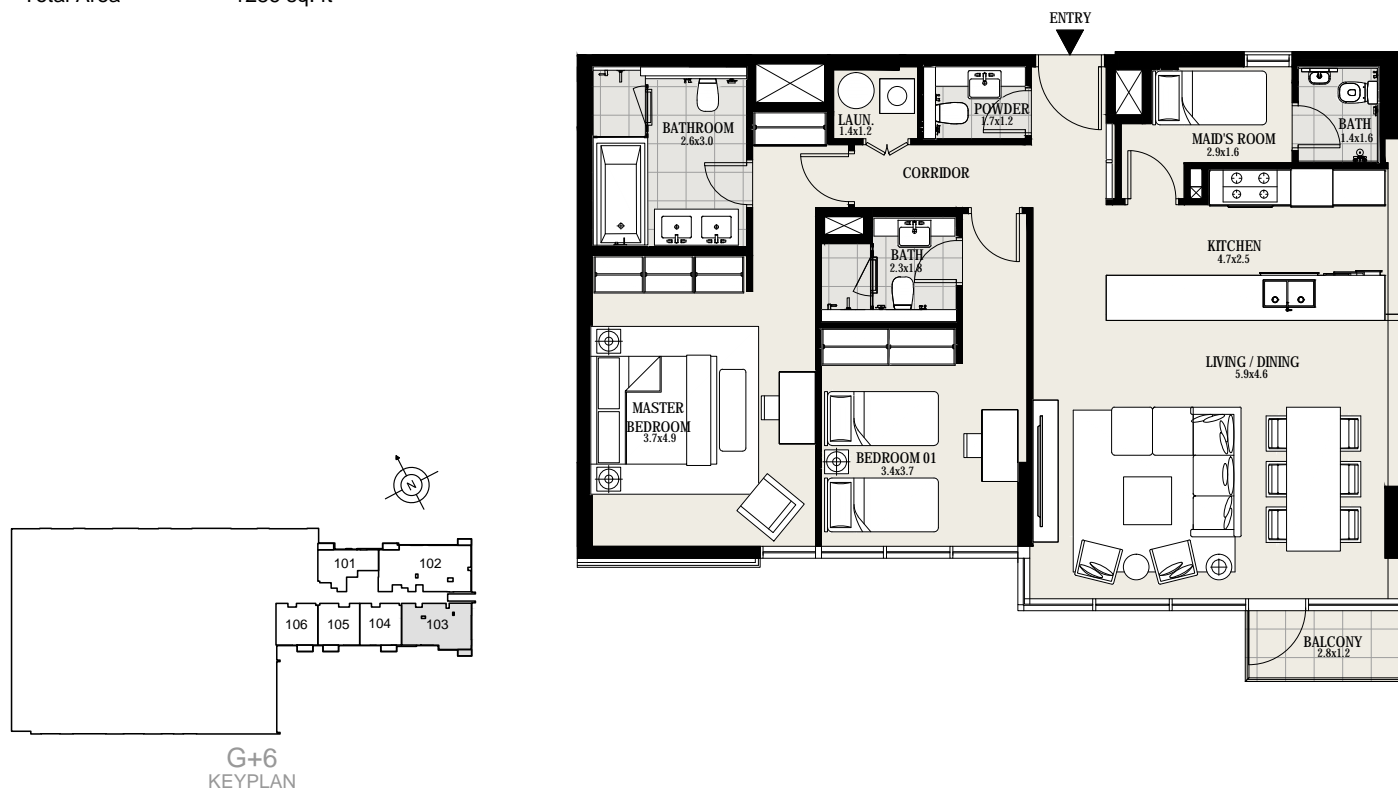
## 2 BEDROOMS

### UNIT 103 | 1ST FLOOR

Suite Area	1249 sq. ft
Balcony Area	37 sq. ft
Total Area	1286 sq. ft



MOHAMMED BIN RASHID  
AL MAKTOUM CITY  
**DISTRICT ONE**



DISCLAIMER: All measurements, dimensions, coordinates and drawings given as the Floor Plans in this literature are approximate and provided only for the purpose of marketing, illustration, information and general guidance as such drawings are not to scale. All the rooms, swimming pool, sizes, locations, orientations, dimensions, fixtures, fittings, finishes and specifications (including materials for, placement, size of rooms, windows, doors, balcony, furniture's, inbuilt wardrobe etc.) provided in the floor plans may vary as the same have been taken from concept designs prior to the actual development/construction and therefore their accuracy in relation to actual construction cannot be confirmed. Hence, we make no guarantee, warranty or representation as to the accuracy and completeness of the Floor plan information as changes may be made during the .development process, without notice. Always refer to latest IFC design available in the sales office for the most accurate representation of all construction details

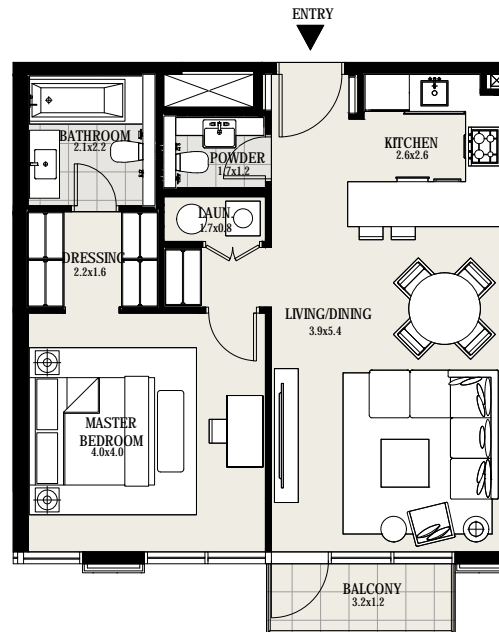
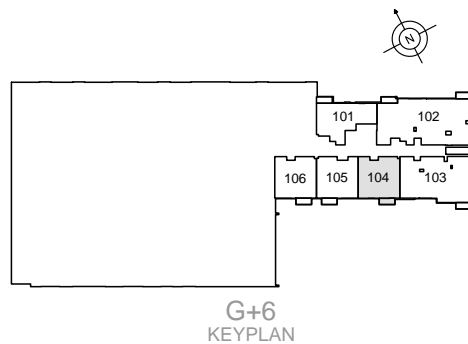
## 1 BEDROOM

### UNIT 104 | 1ST FLOOR

Suite Area	710 sq. ft
Balcony Area	41 sq. ft
Total Area	751 sq. ft



MOHAMMED BIN RASHID  
AL MAKTOUM CITY  
**DISTRICT ONE**



DISCLAIMER: All measurements, dimensions, coordinates and drawings given as the Floor Plans in this literature are approximate and provided only for the purpose of marketing, illustration, information and general guidance as such drawings are not to scale. All the rooms, swimming pool, sizes, locations, orientations, dimensions, fixtures, fittings, finishes and specifications (including materials for, placement, size of rooms, windows, doors, balcony, furniture's, inbuilt wardrobe etc.) provided in the floor plans may vary as the same have been taken from concept designs prior to the actual development/construction and therefore their accuracy in relation to actual construction cannot be confirmed. Hence, we make no guarantee, warranty or representation as to the accuracy and completeness of the Floor plan information as changes may be made during the .development process, without notice. Always refer to latest IFC design available in the sales office for the most accurate representation of all construction details

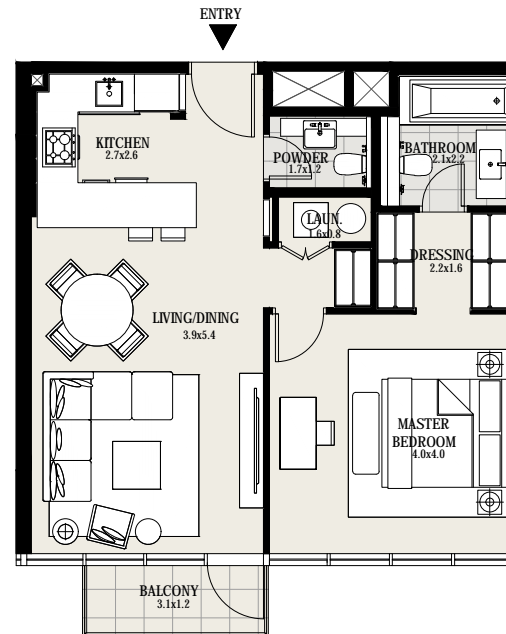
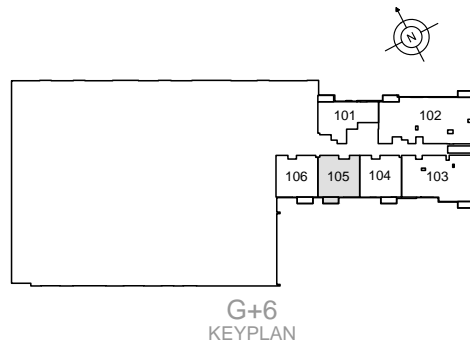
## 1 BEDROOM

### UNIT 105 | 1ST FLOOR

Suite Area	706 sq. ft
Balcony Area	41 sq. ft
Total Area	747 sq. ft



MOHAMMED BIN RASHID  
AL MAKTUUM CITY  
**DISTRICT ONE**



DISCLAIMER: All measurements, dimensions, coordinates and drawings given as the Floor Plans in this literature are approximate and provided only for the purpose of marketing, illustration, information and general guidance as such drawings are not to scale. All the rooms, swimming pool, sizes, locations, orientations, dimensions, fixtures, fittings, finishes and specifications (including materials for, placement, size of rooms, windows, doors, balcony, furniture's, inbuilt wardrobe etc.) provided in the floor plans may vary as the same have been taken from concept designs prior to the actual development/construction and therefore their accuracy in relation to actual construction cannot be confirmed. Hence, we make no guarantee, warranty or representation as to the accuracy and completeness of the Floor plan information as changes may be made during the development process, without notice. Always refer to latest IFC design available in the sales office for the most accurate representation of all construction details

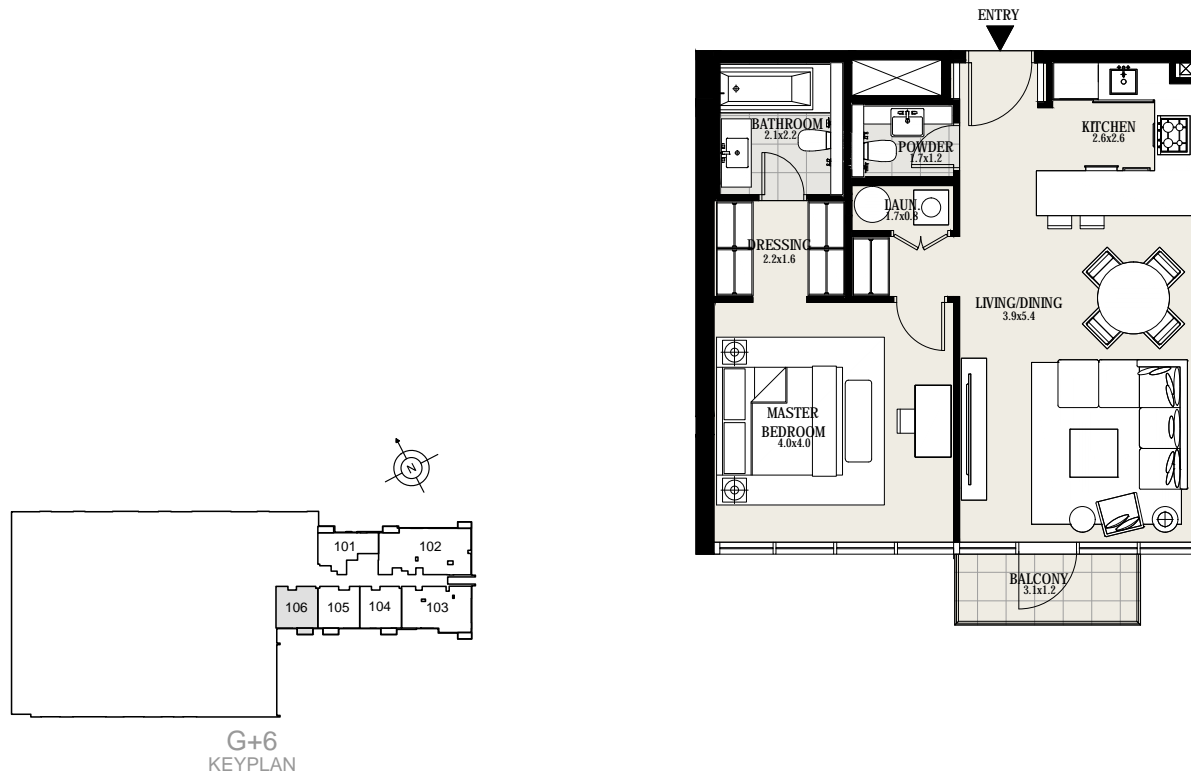
## 1 BEDROOM

### UNIT 106 | 1ST FLOOR

Suite Area	714 sq. ft
Balcony Area	41 sq. ft
Total Area	755 sq. ft



MOHAMMED BIN RASHID  
AL MAKTUUM CITY  
**DISTRICT ONE**



**DISCLAIMER:** All measurements, dimensions, coordinates and drawings given as the Floor Plans in this literature are approximate and provided only for the purpose of marketing, illustration, information and general guidance as such drawings are not to scale. All the rooms, swimming pool, sizes, locations, orientations, dimensions, fixtures, fittings, finishes and specifications (including materials for, placement, size of rooms, windows, doors, balcony, furniture's, inbuilt wardrobe etc.) provided in the floor plans may vary as the same have been taken from concept designs prior to the actual development/construction and therefore their accuracy in relation to actual construction cannot be confirmed. Hence, we make no guarantee, warranty or representation as to the accuracy and completeness of the Floor plan information as changes may be made during the .development process, without notice. Always refer to latest IFC design available in the sales office for the most accurate representation of all construction details

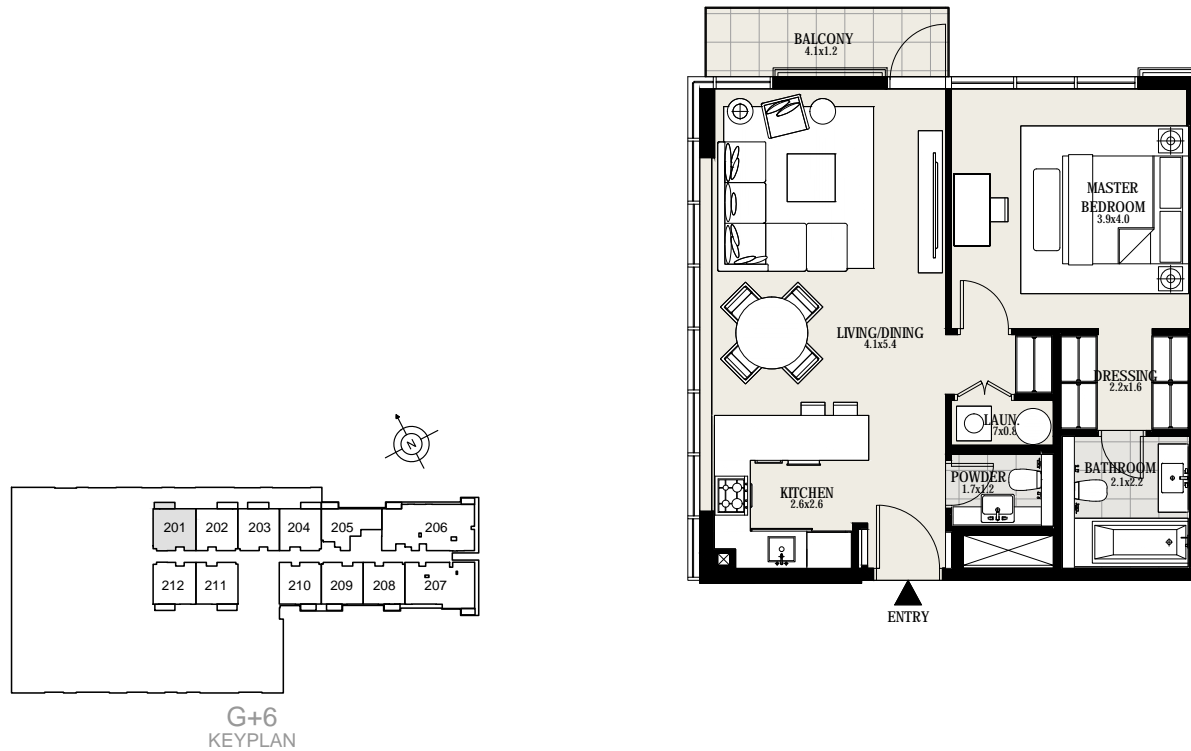
## 1 BEDROOM

### UNIT 201 | 2ND FLOOR

Suite Area	727 sq. ft
Balcony Area	54 sq. ft
Total Area	781 sq. ft



MOHAMMED BIN RASHID  
AL MAKTOUM CITY  
**DISTRICT ONE**



DISCLAIMER: All measurements, dimensions, coordinates and drawings given as the Floor Plans in this literature are approximate and provided only for the purpose of marketing, illustration, information and general guidance as such drawings are not to scale. All the rooms, swimming pool, sizes, locations, orientations, dimensions, fixtures, fittings, finishes and specifications (including materials for, placement, size of rooms, windows, doors, balcony, furniture's, inbuilt wardrobe etc.) provided in the floor plans may vary as the same have been taken from concept designs prior to the actual development/construction and therefore their accuracy in relation to actual construction cannot be confirmed. Hence, we make no guarantee, warranty or representation as to the accuracy and completeness of the Floor plan information as changes may be made during the .development process, without notice. Always refer to latest IFC design available in the sales office for the most accurate representation of all construction details

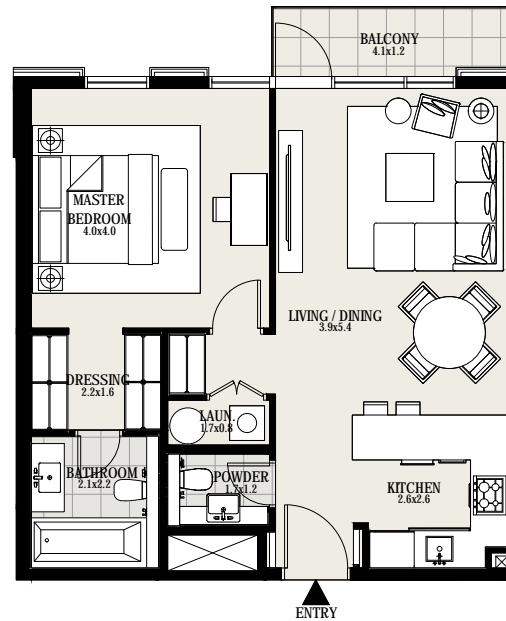
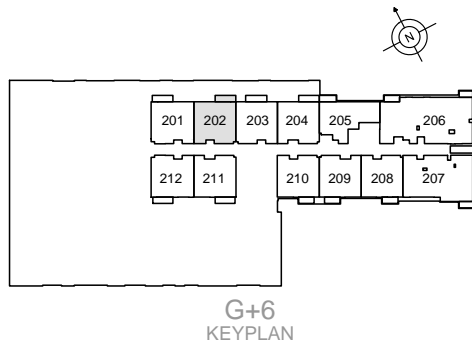




## 1 BEDROOM

### UNIT 202 | 2ND FLOOR

Suite Area	709 sq. ft
Balcony Area	54 sq. ft
Total Area	763 sq. ft



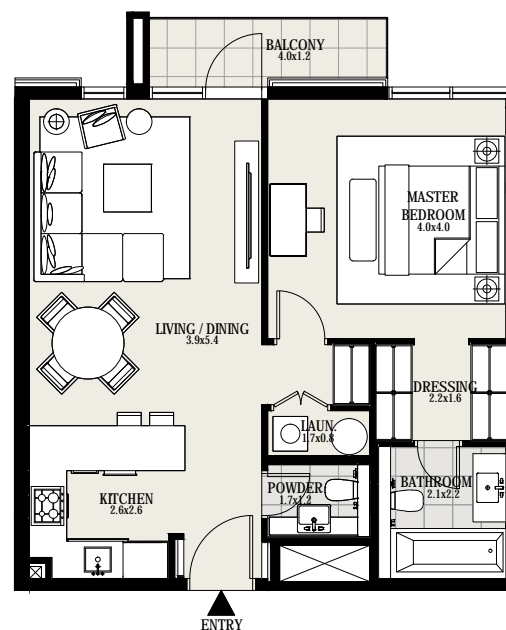
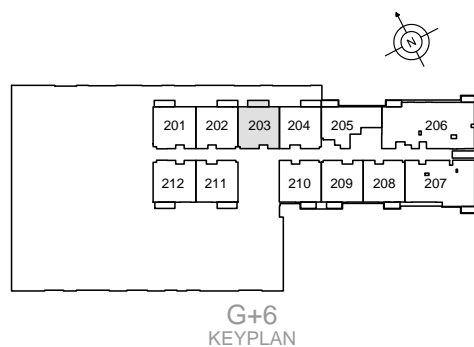
DISCLAIMER: All measurements, dimensions, coordinates and drawings given as the Floor Plans in this literature are approximate and provided only for the purpose of marketing, illustration, information and general guidance as such drawings are not to scale. All the rooms, swimming pool, sizes, locations, orientations, dimensions, fixtures, fittings, finishes and specifications (including materials for, placement, size of rooms, windows, doors, balcony, furniture's, inbuilt wardrobe etc.) provided in the floor plans may vary as the same have been taken from concept designs prior to the actual development/construction and therefore their accuracy in relation to actual construction cannot be confirmed. Hence, we make no guarantee, warranty or representation as to the accuracy and completeness of the Floor plan information as changes may be made during the .development process, without notice. Always refer to latest IFC design available in the sales office for the most accurate representation of all construction details



## 1 BEDROOM

### UNIT 203 | 2ND FLOOR

Suite Area	709 sq. ft
Balcony Area	56 sq. ft
Total Area	765 sq. ft



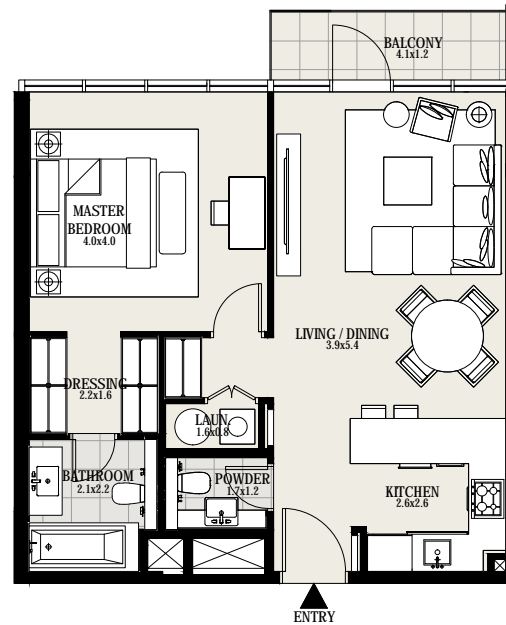
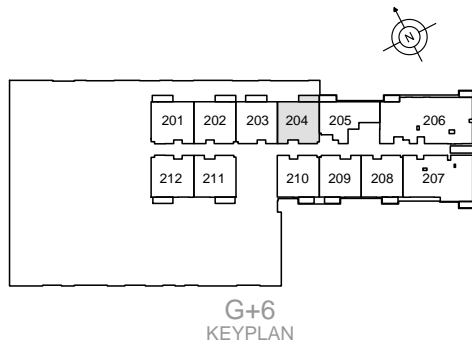
DISCLAIMER: All measurements, dimensions, coordinates and drawings given as the Floor Plans in this literature are approximate and provided only for the purpose of marketing, illustration, information and general guidance as such drawings are not to scale. All the rooms, swimming pool, sizes, locations, orientations, dimensions, fixtures, fittings, finishes and specifications (including materials for, placement, size of rooms, windows, doors, balcony, furniture's, inbuilt wardrobe etc.) provided in the floor plans may vary as the same have been taken from concept designs prior to the actual development/construction and therefore their accuracy in relation to actual construction cannot be confirmed. Hence, we make no guarantee, warranty or representation as to the accuracy and completeness of the Floor plan information as changes may be made during the .development process, without notice. Always refer to latest IFC design available in the sales office for the most accurate representation of all construction details



## 1 BEDROOM

### UNIT 204 | 2ND FLOOR

Suite Area	706 sq. ft
Balcony Area	54 sq. ft
Total Area	760 sq. ft



DISCLAIMER: All measurements, dimensions, coordinates and drawings given as the Floor Plans in this literature are approximate and provided only for the purpose of marketing, illustration, information and general guidance as such drawings are not to scale. All the rooms, swimming pool, sizes, locations, orientations, dimensions, fixtures, fittings, finishes and specifications (including materials for, placement, size of rooms, windows, doors, balcony, furniture's, inbuilt wardrobe etc.) provided in the floor plans may vary as the same have been taken from concept designs prior to the actual development/construction and therefore their accuracy in relation to actual construction cannot be confirmed. Hence, we make no guarantee, warranty or representation as to the accuracy and completeness of the Floor plan information as changes may be made during the .development process, without notice. Always refer to latest IFC design available in the sales office for the most accurate representation of all construction details

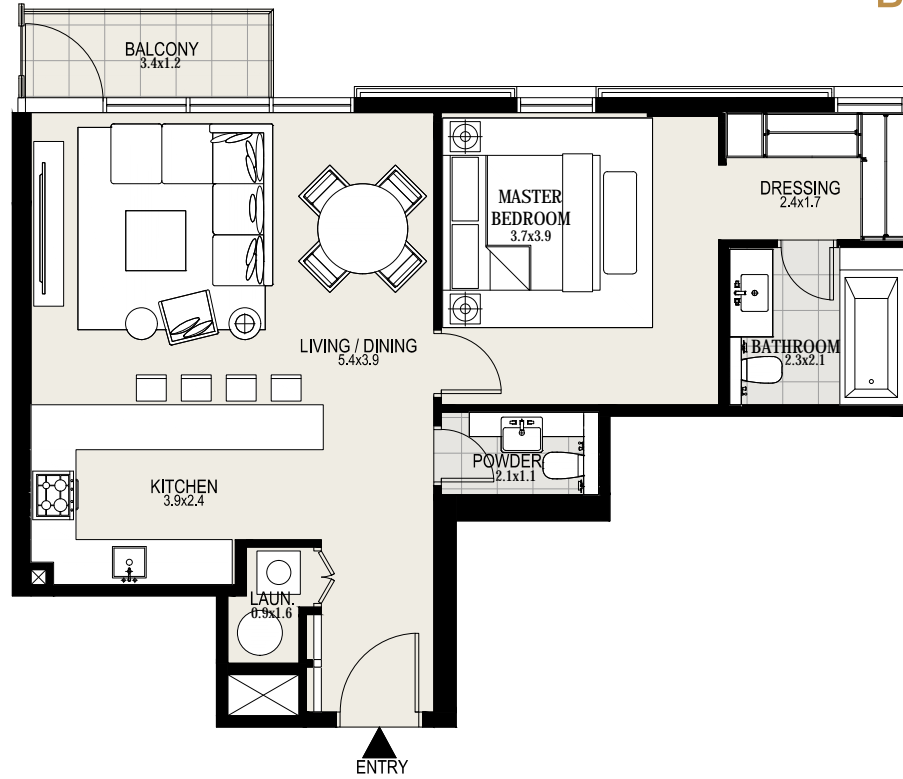
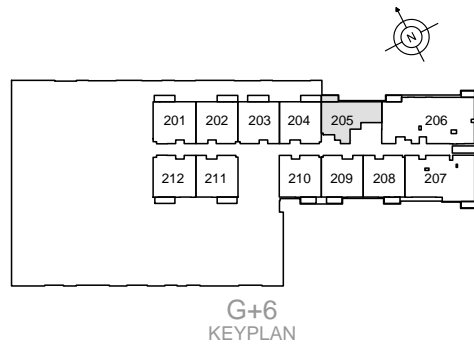
## 1 BEDROOM

### UNIT 205 | 2ND FLOOR

Suite Area	745 sq. ft
Balcony Area	45 sq. ft
Total Area	790 sq. ft



MOHAMMED BIN RASHID  
AL MAKTOUM CITY  
**DISTRICT ONE**



DISCLAIMER: All measurements, dimensions, coordinates and drawings given as the Floor Plans in this literature are approximate and provided only for the purpose of marketing, illustration, information and general guidance as such drawings are not to scale. All the rooms, swimming pool, sizes, locations, orientations, dimensions, fixtures, fittings, finishes and specifications (including materials for, placement, size of rooms, windows, doors, balcony, furniture's, inbuilt wardrobe etc.) provided in the floor plans may vary as the same have been taken from concept designs prior to the actual development/construction and therefore their accuracy in relation to actual construction cannot be confirmed. Hence, we make no guarantee, warranty or representation as to the accuracy and completeness of the Floor plan information as changes may be made during the .development process, without notice. Always refer to latest IFC design available in the sales office for the most accurate representation of all construction details

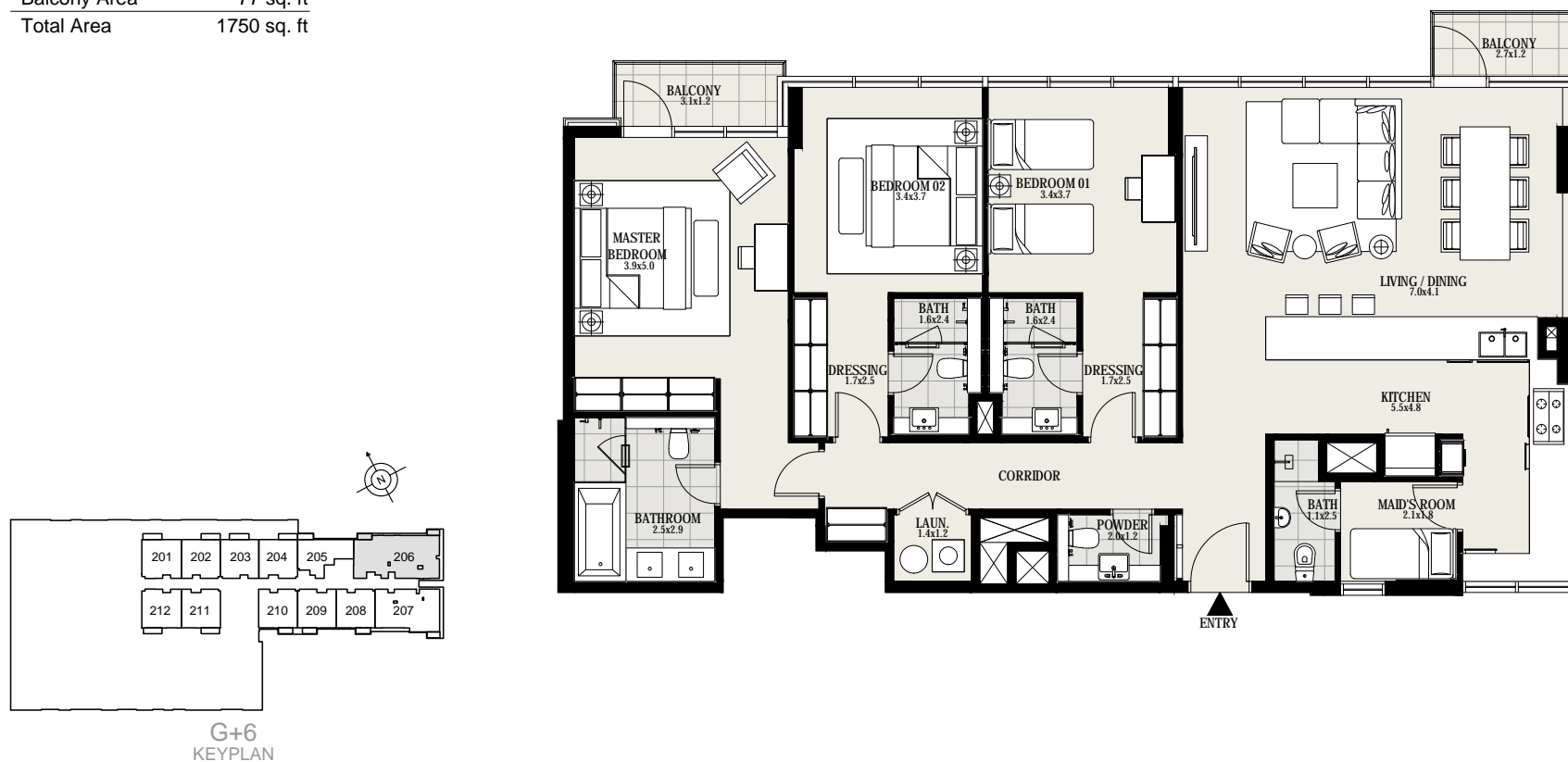
## 3 BEDROOMS

### UNIT 206 | 2ND FLOOR

Suite Area	1673 sq. ft
Balcony Area	77 sq. ft
Total Area	1750 sq. ft



MOHAMMED BIN RASHID  
AL MAKTOUM CITY  
**DISTRICT ONE**



DISCLAIMER: All measurements, dimensions, coordinates and drawings given as the Floor Plans in this literature are approximate and provided only for the purpose of marketing, illustration, information and general guidance as such drawings are not to scale. All the rooms, swimming pool, sizes, locations, orientations, dimensions, fixtures, fittings, finishes and specifications (including materials for, placement, size of rooms, windows, doors, balcony, furniture's, inbuilt wardrobe etc.) provided in the floor plans may vary as the same have been taken from concept designs prior to the actual development/construction and therefore their accuracy in relation to actual construction cannot be confirmed. Hence, we make no guarantee, warranty or representation as to the accuracy and completeness of the Floor plan information as changes may be made during the .development process, without notice. Always refer to latest IFC design available in the sales office for the most accurate representation of all construction details

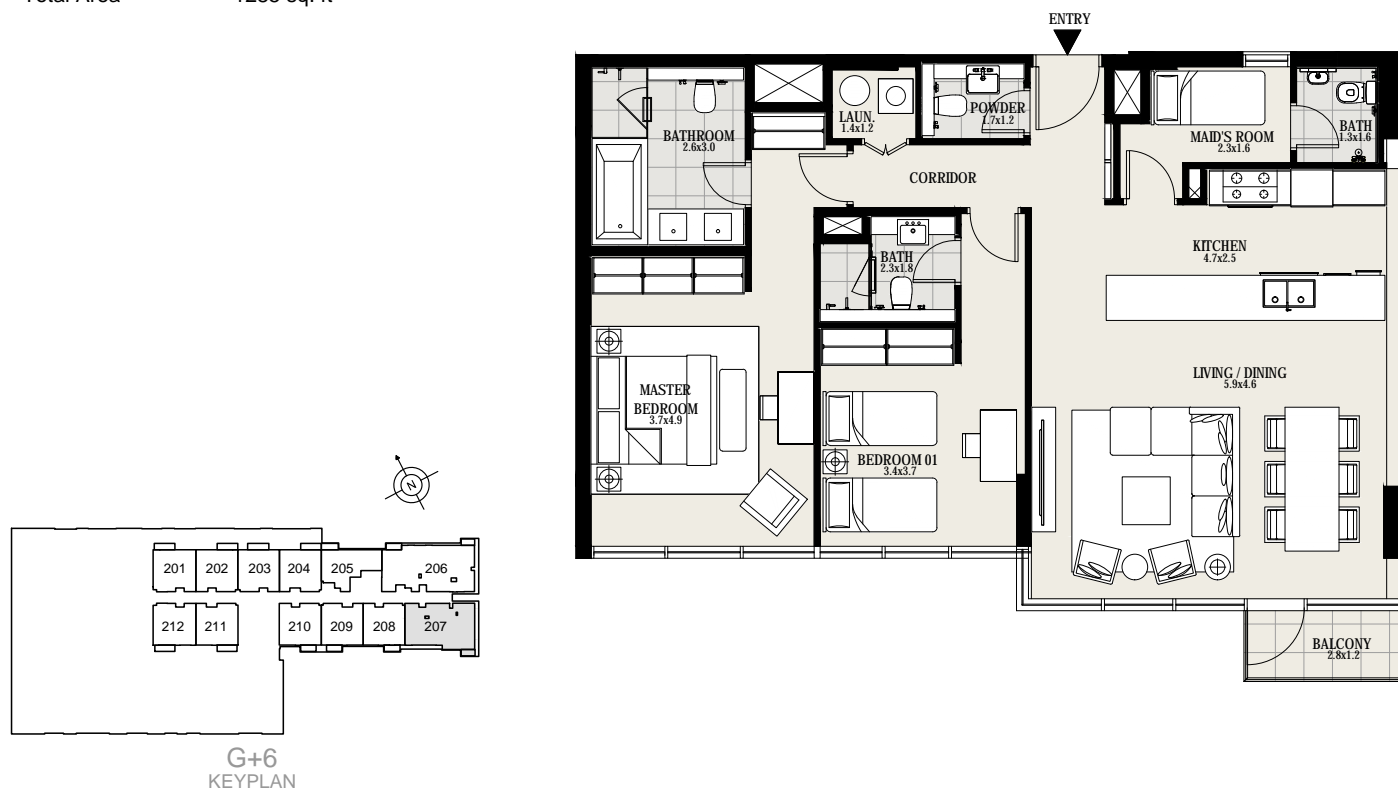
## 2 BEDROOMS

### UNIT 207 | 2ND FLOOR

Suite Area	1249 sq. ft
Balcony Area	37 sq. ft
Total Area	1285 sq. ft



MOHAMMED BIN RASHID  
AL MAKTOUM CITY  
**DISTRICT ONE**



**DISCLAIMER:** All measurements, dimensions, coordinates and drawings given as the Floor Plans in this literature are approximate and provided only for the purpose of marketing, illustration, information and general guidance as such drawings are not to scale. All the rooms, swimming pool, sizes, locations, orientations, dimensions, fixtures, fittings, finishes and specifications (including materials for, placement, size of rooms, windows, doors, balcony, furniture's, inbuilt wardrobe etc.) provided in the floor plans may vary as the same have been taken from concept designs prior to the actual development/construction and therefore their accuracy in relation to actual construction cannot be confirmed. Hence, we make no guarantee, warranty or representation as to the accuracy and completeness of the Floor plan information as changes may be made during the .development process, without notice. Always refer to latest IFC design available in the sales office for the most accurate representation of all construction details



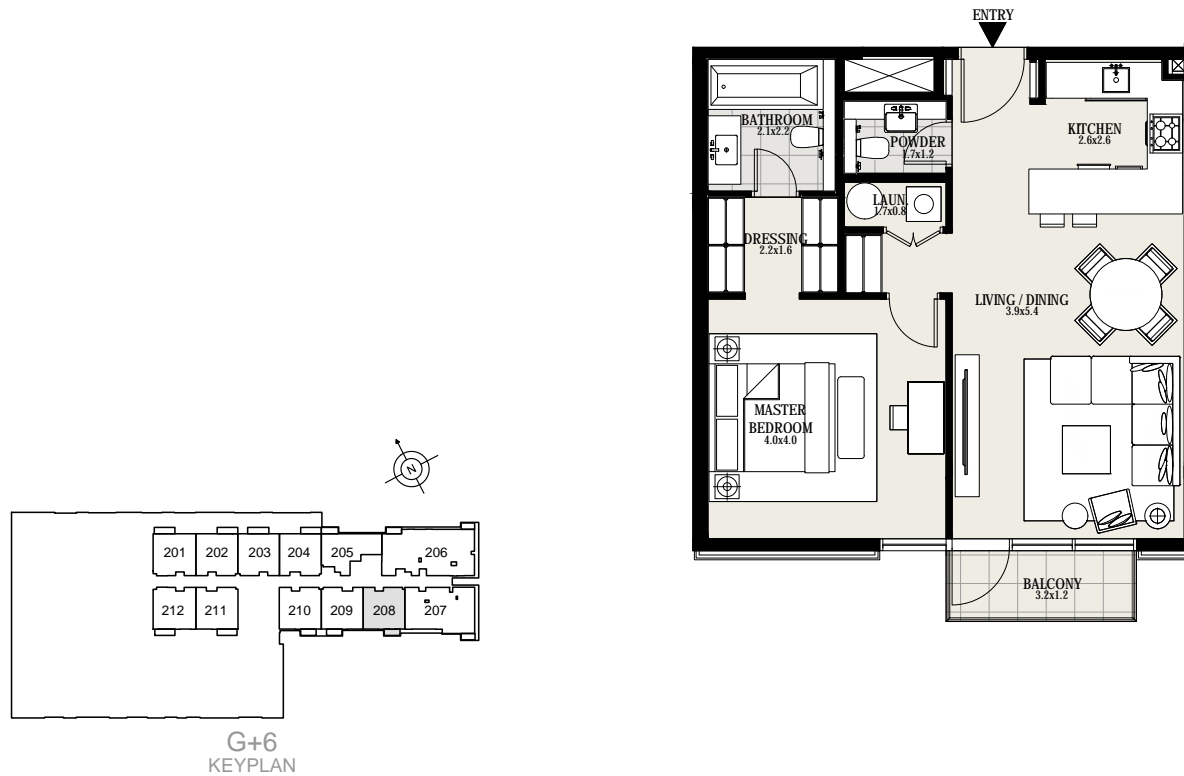
## 1 BEDROOM

### UNIT 208 | 2ND FLOOR

Suite Area	710 sq. ft
Balcony Area	42 sq. ft
Total Area	752 sq. ft



MOHAMMED BIN RASHID  
AL MAKTUUM CITY  
**DISTRICT ONE**



DISCLAIMER: All measurements, dimensions, coordinates and drawings given as the Floor Plans in this literature are approximate and provided only for the purpose of marketing, illustration, information and general guidance as such drawings are not to scale. All the rooms, swimming pool, sizes, locations, orientations, dimensions, fixtures, fittings, finishes and specifications (including materials for, placement, size of rooms, windows, doors, balcony, furniture's, inbuilt wardrobe etc.) provided in the floor plans may vary as the same have been taken from concept designs prior to the actual development/construction and therefore their accuracy in relation to actual construction cannot be confirmed. Hence, we make no guarantee, warranty or representation as to the accuracy and completeness of the Floor plan information as changes may be made during the .development process, without notice. Always refer to latest IFC design available in the sales office for the most accurate representation of all construction details

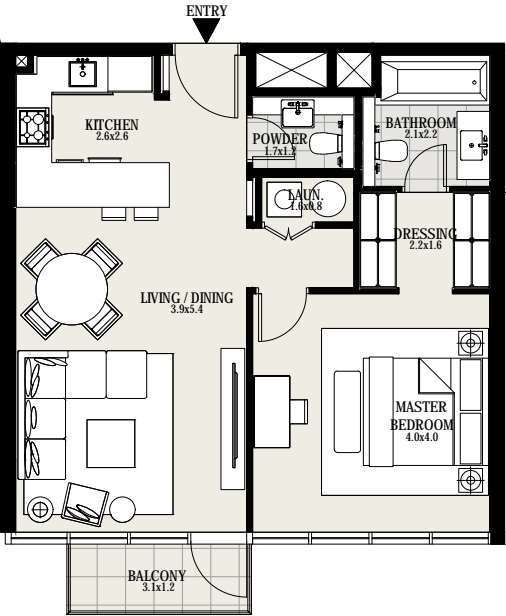
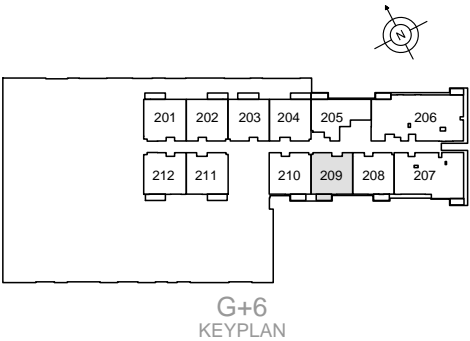
1 BEDROOM

UNIT 209 | 2ND FLOOR

Suite Area	706 sq. ft
Balcony Area	41 sq. ft
Total Area	747 sq. ft



MOHAMMED BIN RASHID  
AL MAKTOUM CITY  
**DISTRICT ONE**



DISCLAIMER: All measurements, dimensions, coordinates and drawings given as the Floor Plans in this literature are approximate and provided only for the purpose of marketing, illustration, information and general guidance as such drawings are not to scale. All the rooms, swimming pool, sizes, locations, orientations, dimensions, fixtures, fittings, finishes and specifications (including materials for, placement, size of rooms, windows, doors, balcony, furniture's, inbuilt wardrobe etc.) provided in the floor plans may vary as the same have been taken from concept designs prior to the actual development/construction and therefore their accuracy in relation to actual construction cannot be confirmed. Hence, we make no guarantee, warranty or representation as to the accuracy and completeness of the Floor plan information as changes may be made during the .development process, without notice. Always refer to latest IFC design available in the sales office for the most accurate representation of all construction details

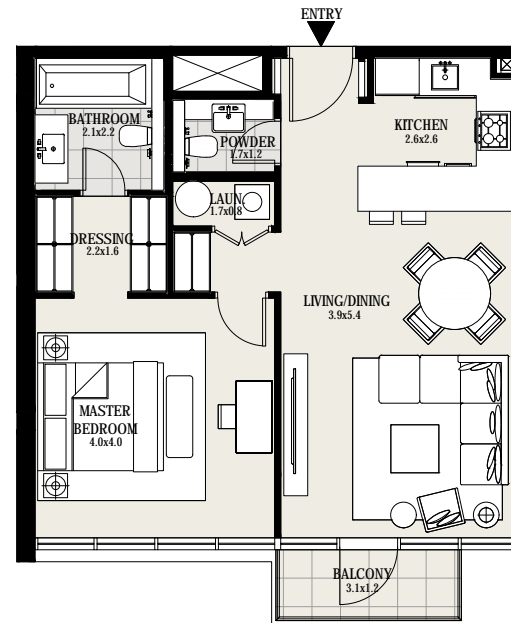
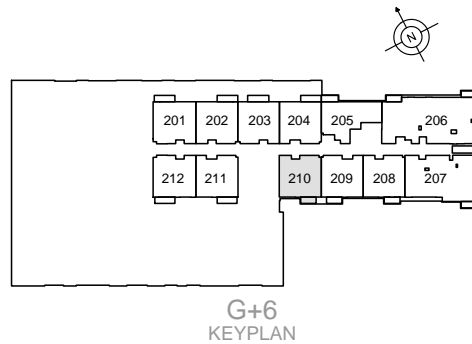
## 1 BEDROOM

### UNIT 210 | 2ND FLOOR

Suite Area	714 sq. ft
Balcony Area	41 sq. ft
Total Area	755 sq. ft



MOHAMMED BIN RASHID  
AL MAKTOUM CITY  
**DISTRICT ONE**



DISCLAIMER: All measurements, dimensions, coordinates and drawings given as the Floor Plans in this literature are approximate and provided only for the purpose of marketing, illustration, information and general guidance as such drawings are not to scale. All the rooms, swimming pool, sizes, locations, orientations, dimensions, fixtures, fittings, finishes and specifications (including materials for, placement, size of rooms, windows, doors, balcony, furniture's, inbuilt wardrobe etc.) provided in the floor plans may vary as the same have been taken from concept designs prior to the actual development/construction and therefore their accuracy in relation to actual construction cannot be confirmed. Hence, we make no guarantee, warranty or representation as to the accuracy and completeness of the Floor plan information as changes may be made during the .development process, without notice. Always refer to latest IFC design available in the sales office for the most accurate representation of all construction details

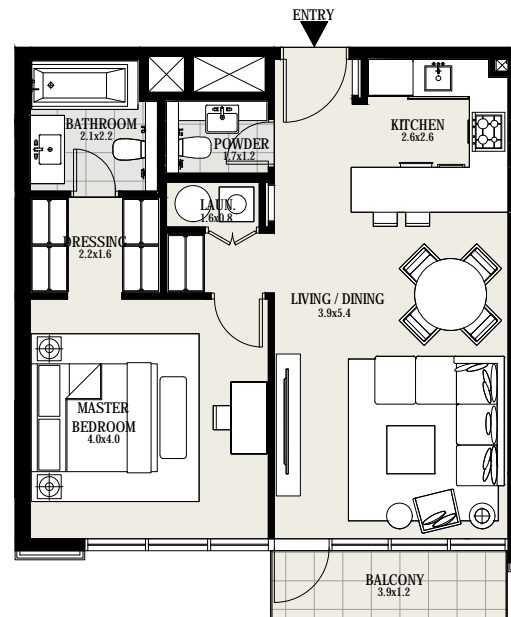
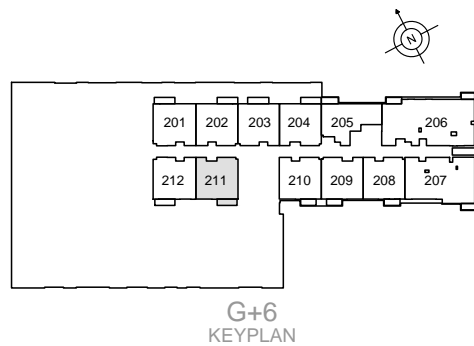
## 1 BEDROOM

### UNIT 211 | 2ND FLOOR

Suite Area	710 sq. ft
Balcony Area	53 sq. ft
Total Area	763 sq. ft



MOHAMMED BIN RASHID  
AL MAKTUUM CITY  
**DISTRICT ONE**



DISCLAIMER: All measurements, dimensions, coordinates and drawings given as the Floor Plans in this literature are approximate and provided only for the purpose of marketing, illustration, information and general guidance as such drawings are not to scale. All the rooms, swimming pool, sizes, locations, orientations, dimensions, fixtures, fittings, finishes and specifications (including materials for, placement, size of rooms, windows, doors, balcony, furniture's, inbuilt wardrobe etc.) provided in the floor plans may vary as the same have been taken from concept designs prior to the actual development/construction and therefore their accuracy in relation to actual construction cannot be confirmed. Hence, we make no guarantee, warranty or representation as to the accuracy and completeness of the Floor plan information as changes may be made during the .development process, without notice. Always refer to latest IFC design available in the sales office for the most accurate representation of all construction details

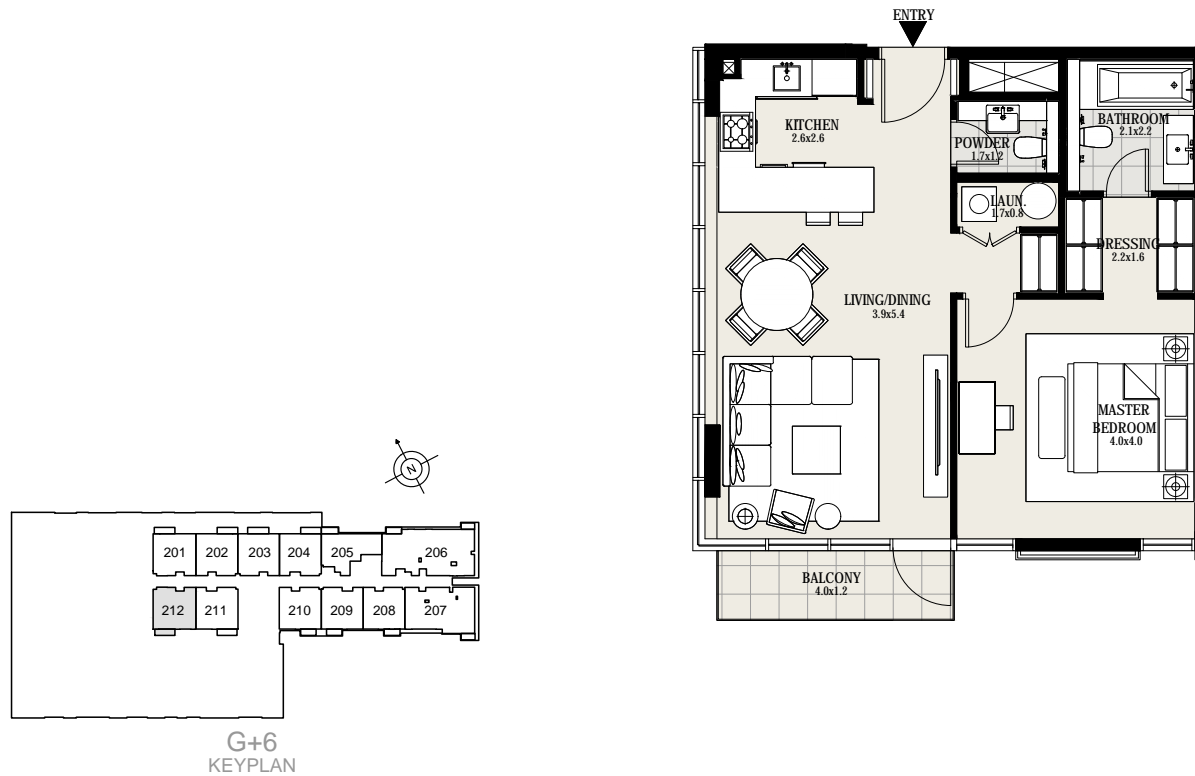
## 1 BEDROOM

### UNIT 212 | 2ND FLOOR

Suite Area	727 sq. ft
Balcony Area	53 sq. ft
Total Area	780 sq. ft



MOHAMMED BIN RASHID  
AL MAKTUUM CITY  
**DISTRICT ONE**



**DISCLAIMER:** All measurements, dimensions, coordinates and drawings given as the Floor Plans in this literature are approximate and provided only for the purpose of marketing, illustration, information and general guidance as such drawings are not to scale. All the rooms, swimming pool, sizes, locations, orientations, dimensions, fixtures, fittings, finishes and specifications (including materials for, placement, size of rooms, windows, doors, balcony, furniture's, inbuilt wardrobe etc.) provided in the floor plans may vary as the same have been taken from concept designs prior to the actual development/construction and therefore their accuracy in relation to actual construction cannot be confirmed. Hence, we make no guarantee, warranty or representation as to the accuracy and completeness of the Floor plan information as changes may be made during the .development process, without notice. Always refer to latest IFC design available in the sales office for the most accurate representation of all construction details

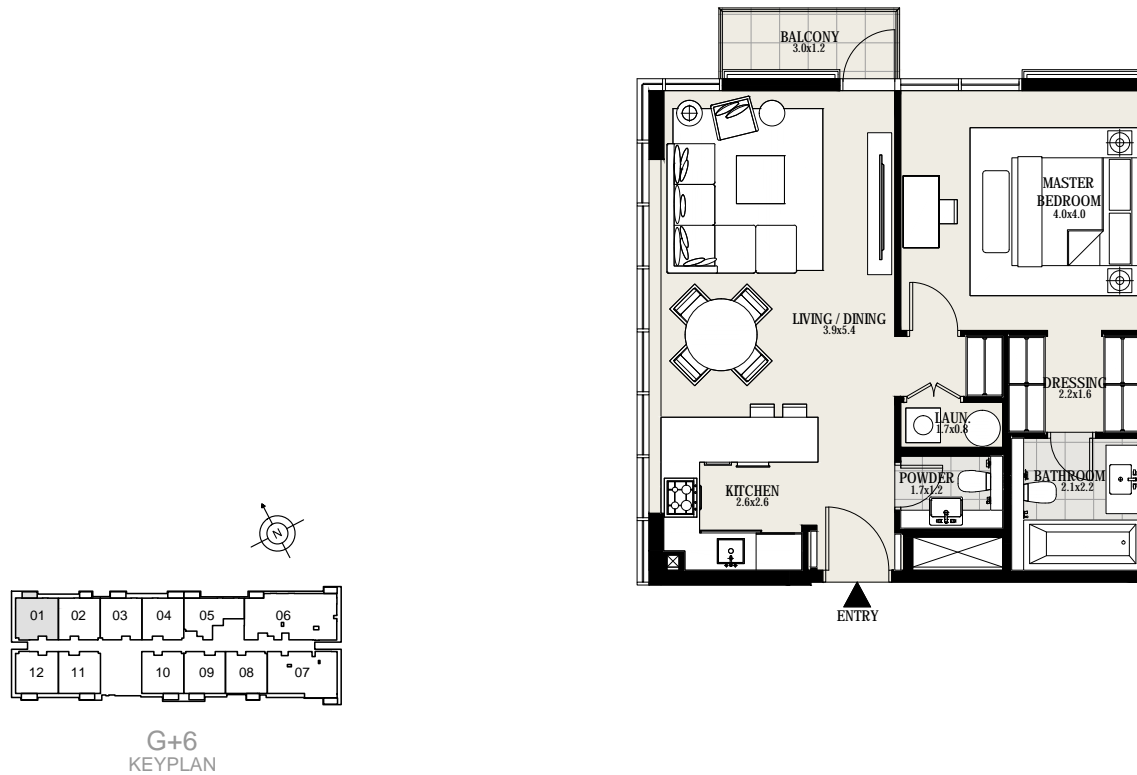
## 1 BEDROOM

### UNIT 01 | 3RD to 6TH FLOOR

Suite Area	727 sq. ft
Balcony Area	40 sq. ft
Total Area	767 sq. ft



MOHAMMED BIN RASHID  
AL MAKTOUM CITY  
**DISTRICT ONE**



**DISCLAIMER:** All measurements, dimensions, coordinates and drawings given as the Floor Plans in this literature are approximate and provided only for the purpose of marketing, illustration, information and general guidance as such drawings are not to scale. All the rooms, swimming pool, sizes, locations, orientations, dimensions, fixtures, fittings, finishes and specifications (including materials for, placement, size of rooms, windows, doors, balcony, furniture's, inbuilt wardrobe etc.) provided in the floor plans may vary as the same have been taken from concept designs prior to the actual development/construction and therefore their accuracy in relation to actual construction cannot be confirmed. Hence, we make no guarantee, warranty or representation as to the accuracy and completeness of the Floor plan information as changes may be made during the .development process, without notice. Always refer to latest IFC design available in the sales office for the most accurate representation of all construction details



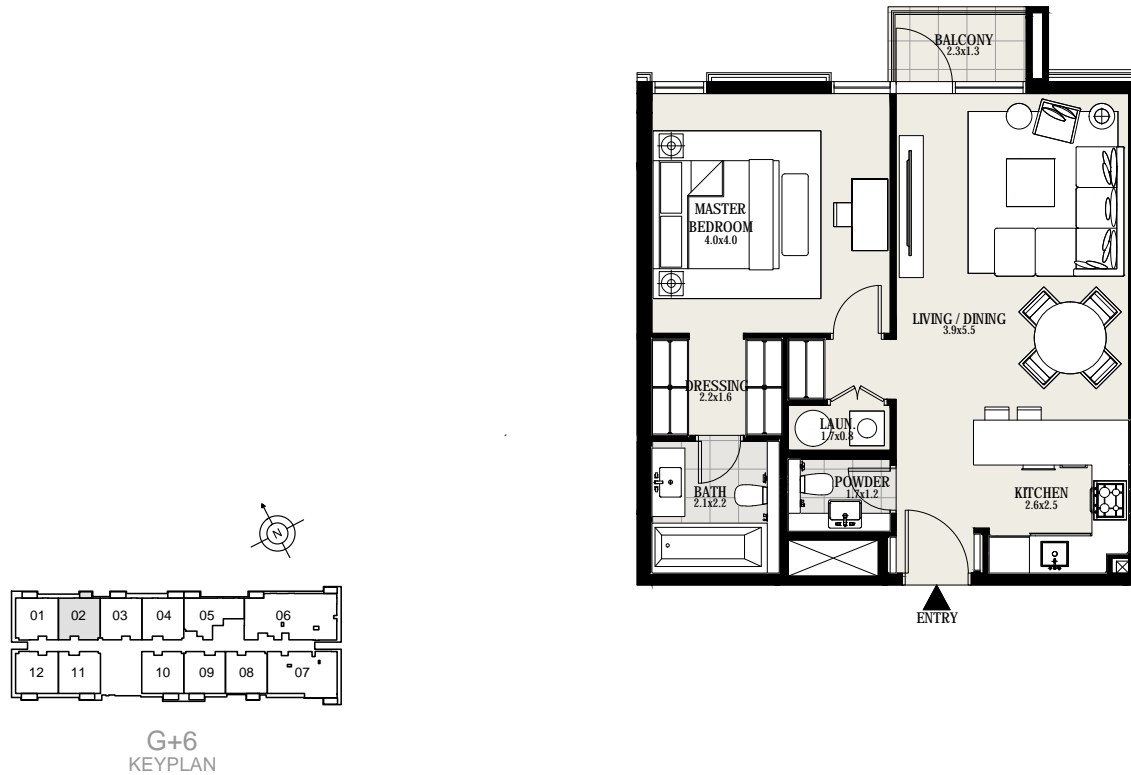
## 1 BEDROOM

### UNIT 02 | 3RD to 6TH FLOOR

Suite Area	709 sq. ft
Balcony Area	32 sq. ft
Total Area	741 sq. ft



MOHAMMED BIN RASHID  
AL MAKTOUM CITY  
**DISTRICT ONE**



DISCLAIMER: All measurements, dimensions, coordinates and drawings given as the Floor Plans in this literature are approximate and provided only for the purpose of marketing, illustration, information and general guidance as such drawings are not to scale. All the rooms, swimming pool, sizes, locations, orientations, dimensions, fixtures, fittings, finishes and specifications (including materials for, placement, size of rooms, windows, doors, balcony, furniture's, inbuilt wardrobe etc.) provided in the floor plans may vary as the same have been taken from concept designs prior to the actual development/construction and therefore their accuracy in relation to actual construction cannot be confirmed. Hence, we make no guarantee, warranty or representation as to the accuracy and completeness of the Floor plan information as changes may be made during the .development process, without notice. Always refer to latest IFC design available in the sales office for the most accurate representation of all construction details

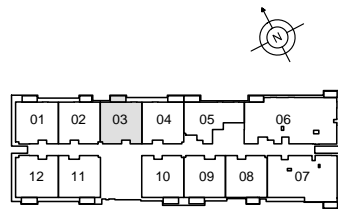
## 1 BEDROOM

### UNIT 03 | 3RD to 6TH FLOOR

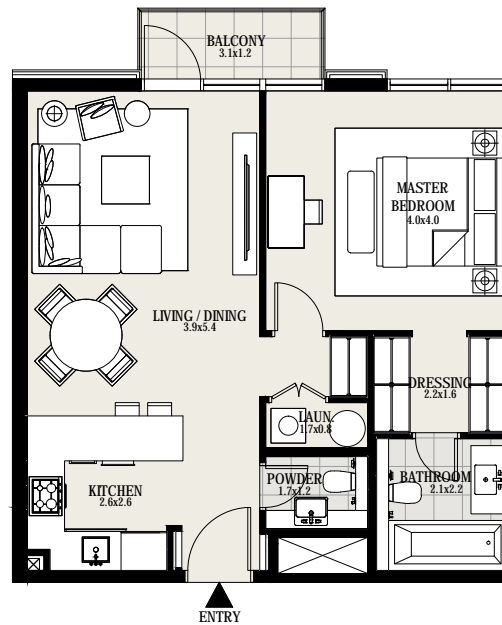
Suite Area	709 sq. ft
Balcony Area	41 sq. ft
Total Area	750 sq. ft



MOHAMMED BIN RASHID  
AL MAKTOUM CITY  
**DISTRICT ONE**



G+6  
KEYPLAN



DISCLAIMER: All measurements, dimensions, coordinates and drawings given as the Floor Plans in this literature are approximate and provided only for the purpose of marketing, illustration, information and general guidance as such drawings are not to scale. All the rooms, swimming pool, sizes, locations, orientations, dimensions, fixtures, fittings, finishes and specifications (including materials for, placement, size of rooms, windows, doors, balcony, furniture's, inbuilt wardrobe etc.) provided in the floor plans may vary as the same have been taken from concept designs prior to the actual development/construction and therefore their accuracy in relation to actual construction cannot be confirmed. Hence, we make no guarantee, warranty or representation as to the accuracy and completeness of the Floor plan information as changes may be made during the .development process, without notice. Always refer to latest IFC design available in the sales office for the most accurate representation of all construction details

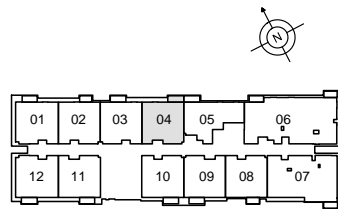
## 1 BEDROOM

### UNIT 04 | 3RD to 6TH FLOOR

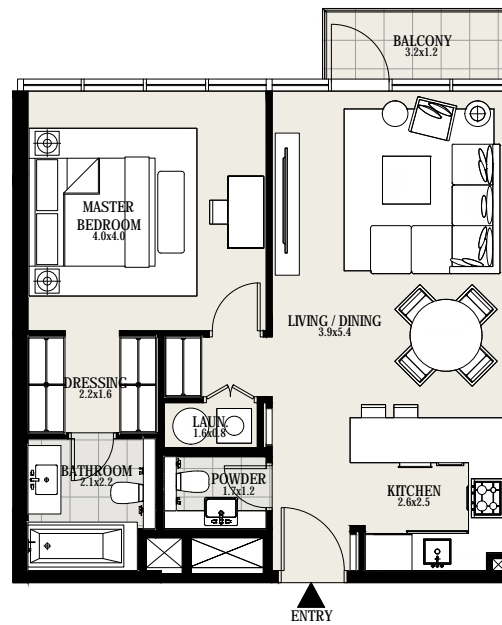
Suite Area	706 sq. ft
Balcony Area	42 sq. ft
Total Area	748 sq. ft



MOHAMMED BIN RASHID  
AL MAKTOUM CITY  
**DISTRICT ONE**



G+6  
KEYPLAN



DISCLAIMER: All measurements, dimensions, coordinates and drawings given as the Floor Plans in this literature are approximate and provided only for the purpose of marketing, illustration, information and general guidance as such drawings are not to scale. All the rooms, swimming pool, sizes, locations, orientations, dimensions, fixtures, fittings, finishes and specifications (including materials for, placement, size of rooms, windows, doors, balcony, furniture's, inbuilt wardrobe etc.) provided in the floor plans may vary as the same have been taken from concept designs prior to the actual development/construction and therefore their accuracy in relation to actual construction cannot be confirmed. Hence, we make no guarantee, warranty or representation as to the accuracy and completeness of the Floor plan information as changes may be made during the .development process, without notice. Always refer to latest IFC design available in the sales office for the most accurate representation of all construction details

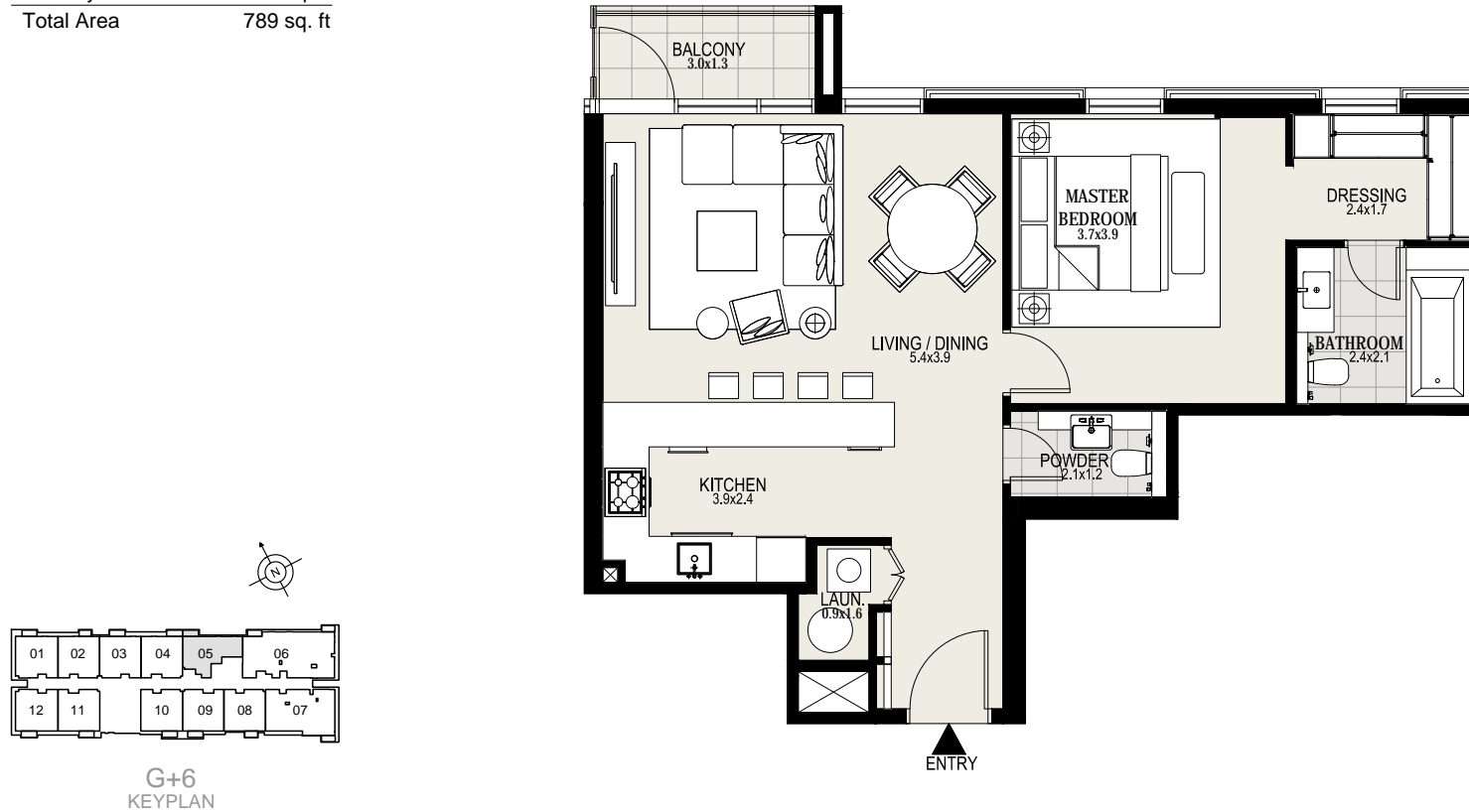
## 1 BEDROOM

### UNIT 05 | 3RD to 6TH FLOOR

Suite Area	746 sq. ft
Balcony Area	43 sq. ft
Total Area	789 sq. ft



MOHAMMED BIN RASHID  
AL MAKTOUM CITY  
**DISTRICT ONE**



**DISCLAIMER:** All measurements, dimensions, coordinates and drawings given as the Floor Plans in this literature are approximate and provided only for the purpose of marketing, illustration, information and general guidance as such drawings are not to scale. All the rooms, swimming pool, sizes, locations, orientations, dimensions, fixtures, fittings, finishes and specifications (including materials for, placement, size of rooms, windows, doors, balcony, furniture's, inbuilt wardrobe etc.) provided in the floor plans may vary as the same have been taken from concept designs prior to the actual development/construction and therefore their accuracy in relation to actual construction cannot be confirmed. Hence, we make no guarantee, warranty or representation as to the accuracy and completeness of the Floor plan information as changes may be made during the .development process, without notice. Always refer to latest IFC design available in the sales office for the most accurate representation of all construction details

## 3 BEDROOMS

### UNIT 06 | 3RD to 6TH FLOOR

Suite Area	1674 sq. ft
Balcony Area	73 sq. ft
Total Area	1747 sq. ft



MOHAMMED BIN RASHID  
AL MAKTOUM CITY  
**DISTRICT ONE**



**DISCLAIMER:** All measurements, dimensions, coordinates and drawings given as the Floor Plans in this literature are approximate and provided only for the purpose of marketing, illustration, information and general guidance as such drawings are not to scale. All the rooms, swimming pool, sizes, locations, orientations, dimensions, fixtures, fittings, finishes and specifications (including materials for, placement, size of rooms, windows, doors, balcony, furniture's, inbuilt wardrobe etc.) provided in the floor plans may vary as the same have been taken from concept designs prior to the actual development/construction and therefore their accuracy in relation to actual construction cannot be confirmed. Hence, we make no guarantee, warranty or representation as to the accuracy and completeness of the Floor plan information as changes may be made during the .development process, without notice. Always refer to latest IFC design available in the sales office for the most accurate representation of all construction details

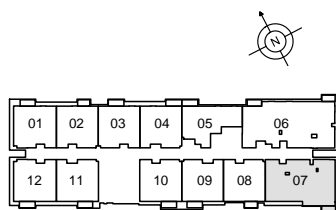
## 2 BEDROOMS

### UNIT 07 | 3RD to 6TH FLOOR

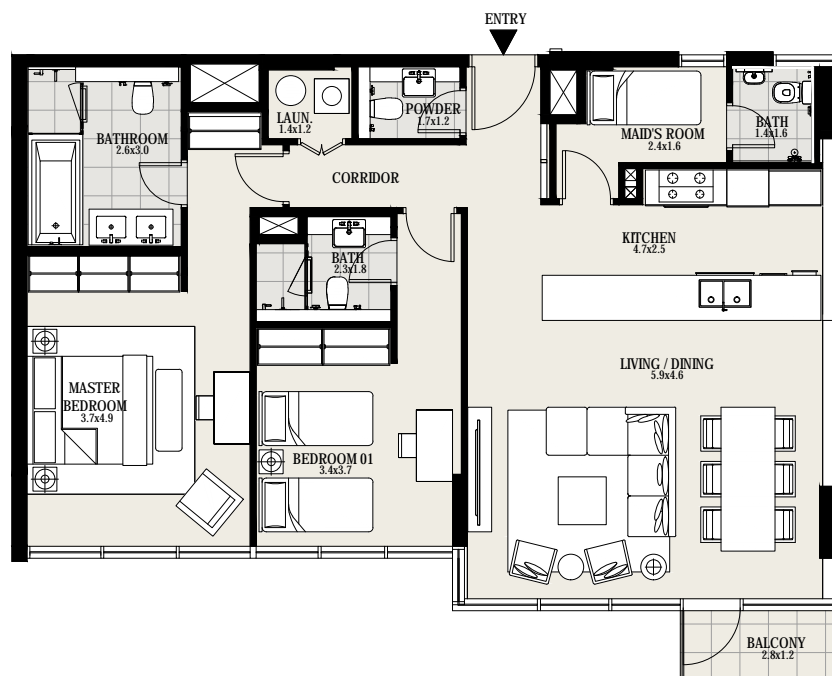
Suite Area	1248 sq. ft
Balcony Area	36 sq. ft
Total Area	1284 sq. ft



MOHAMMED BIN RASHID  
AL MAKTOUM CITY  
**DISTRICT ONE**



G+6  
KEYPLAN



**DISCLAIMER:** All measurements, dimensions, coordinates and drawings given as the Floor Plans in this literature are approximate and provided only for the purpose of marketing, illustration, information and general guidance as such drawings are not to scale. All the rooms, swimming pool, sizes, locations, orientations, dimensions, fixtures, fittings, finishes and specifications (including materials for, placement, size of rooms, windows, doors, balcony, furniture's, inbuilt wardrobe etc.) provided in the floor plans may vary as the same have been taken from concept designs prior to the actual development/construction and therefore their accuracy in relation to actual construction cannot be confirmed. Hence, we make no guarantee, warranty or representation as to the accuracy and completeness of the Floor plan information as changes may be made during the .development process, without notice. Always refer to latest IFC design available in the sales office for the most accurate representation of all construction details

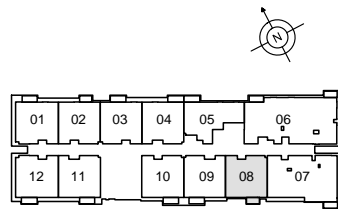
## 1 BEDROOM

### UNIT 08 | 3RD to 6TH FLOOR

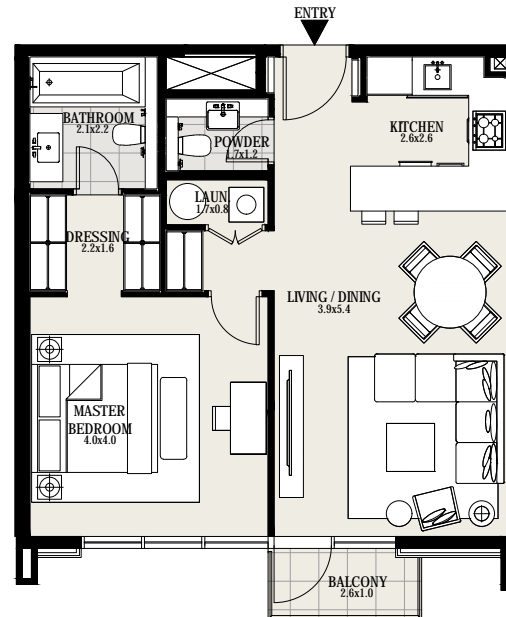
Suite Area	710 sq. ft
Balcony Area	33 sq. ft
Total Area	743 sq. ft



MOHAMMED BIN RASHID  
AL MAKTOUM CITY  
**DISTRICT ONE**



G+6  
KEYPLAN



DISCLAIMER: All measurements, dimensions, coordinates and drawings given as the Floor Plans in this literature are approximate and provided only for the purpose of marketing, illustration, information and general guidance as such drawings are not to scale. All the rooms, swimming pool, sizes, locations, orientations, dimensions, fixtures, fittings, finishes and specifications (including materials for, placement, size of rooms, windows, doors, balcony, furniture's, inbuilt wardrobe etc.) provided in the floor plans may vary as the same have been taken from concept designs prior to the actual development/construction and therefore their accuracy in relation to actual construction cannot be confirmed. Hence, we make no guarantee, warranty or representation as to the accuracy and completeness of the Floor plan information as changes may be made during the .development process, without notice. Always refer to latest IFC design available in the sales office for the most accurate representation of all construction details

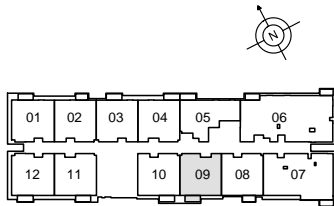
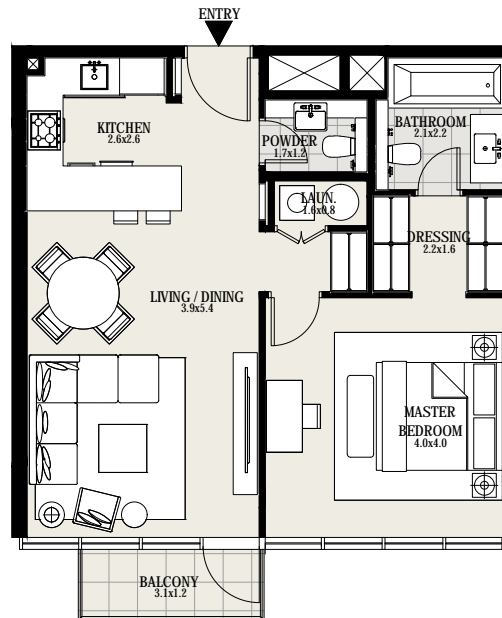
## 1 BEDROOM

### UNIT 09 | 3RD to 6TH FLOOR

Suite Area	706 sq. ft
Balcony Area	41 sq. ft
Total Area	747 sq. ft



MOHAMMED BIN RASHID  
AL MAKTOUM CITY  
**DISTRICT ONE**



G+6  
KEYPLAN

DISCLAIMER: All measurements, dimensions, coordinates and drawings given as the Floor Plans in this literature are approximate and provided only for the purpose of marketing, illustration, information and general guidance as such drawings are not to scale. All the rooms, swimming pool, sizes, locations, orientations, dimensions, fixtures, fittings, finishes and specifications (including materials for, placement, size of rooms, windows, doors, balcony, furniture's, inbuilt wardrobe etc.) provided in the floor plans may vary as the same have been taken from concept designs prior to the actual development/construction and therefore their accuracy in relation to actual construction cannot be confirmed. Hence, we make no guarantee, warranty or representation as to the accuracy and completeness of the Floor plan information as changes may be made during the .development process, without notice. Always refer to latest IFC design available in the sales office for the most accurate representation of all construction details



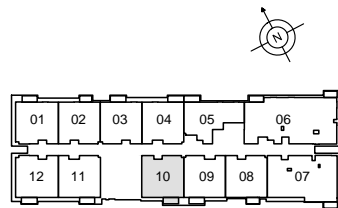
## 1 BEDROOM

### UNIT 10 | 3RD to 6TH FLOOR

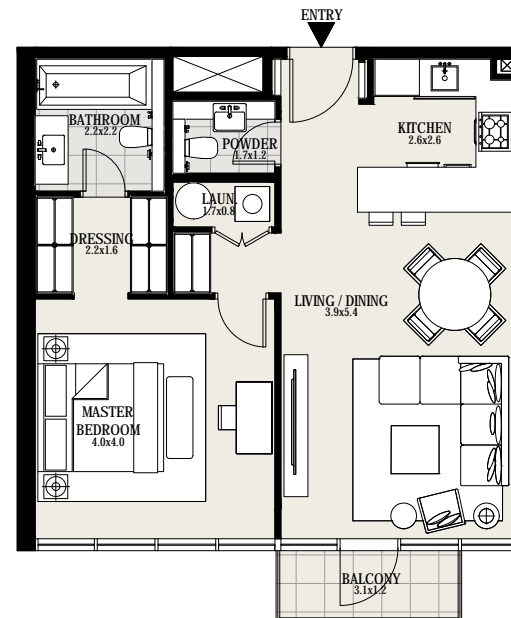
Suite Area	714 sq. ft
Balcony Area	41 sq. ft
Total Area	755 sq. ft



MOHAMMED BIN RASHID  
AL MAKTUUM CITY  
**DISTRICT ONE**



G+6  
KEYPLAN



DISCLAIMER: All measurements, dimensions, coordinates and drawings given as the Floor Plans in this literature are approximate and provided only for the purpose of marketing, illustration, information and general guidance as such drawings are not to scale. All the rooms, swimming pool, sizes, locations, orientations, dimensions, fixtures, fittings, finishes and specifications (including materials for, placement, size of rooms, windows, doors, balcony, furniture's, inbuilt wardrobe etc.) provided in the floor plans may vary as the same have been taken from concept designs prior to the actual development/construction and therefore their accuracy in relation to actual construction cannot be confirmed. Hence, we make no guarantee, warranty or representation as to the accuracy and completeness of the Floor plan information as changes may be made during the .development process, without notice. Always refer to latest IFC design available in the sales office for the most accurate representation of all construction details

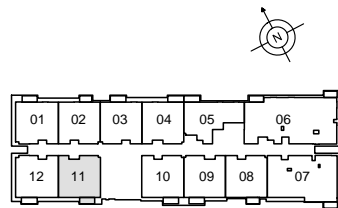
## 1 BEDROOM

### UNIT 11 | 3RD to 6TH FLOOR

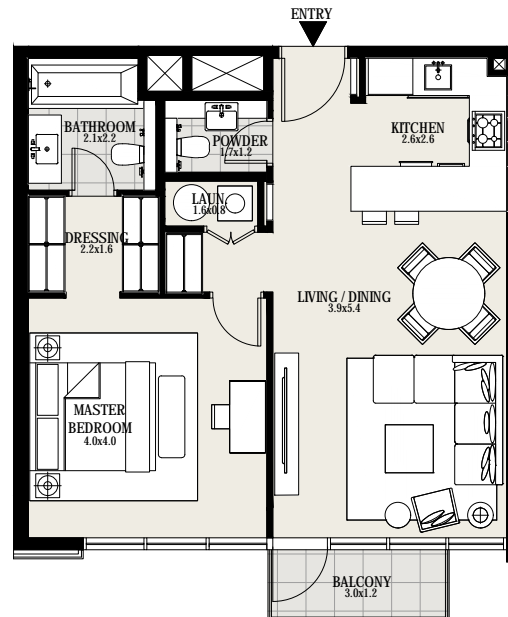
Suite Area	710 sq. ft
Balcony Area	40 sq. ft
Total Area	750 sq. ft



MOHAMMED BIN RASHID  
AL MAKTUUM CITY  
**DISTRICT ONE**



G+6  
KEYPLAN



DISCLAIMER: All measurements, dimensions, coordinates and drawings given as the Floor Plans in this literature are approximate and provided only for the purpose of marketing, illustration, information and general guidance as such drawings are not to scale. All the rooms, swimming pool, sizes, locations, orientations, dimensions, fixtures, fittings, finishes and specifications (including materials for, placement, size of rooms, windows, doors, balcony, furniture's, inbuilt wardrobe etc.) provided in the floor plans may vary as the same have been taken from concept designs prior to the actual development/construction and therefore their accuracy in relation to actual construction cannot be confirmed. Hence, we make no guarantee, warranty or representation as to the accuracy and completeness of the Floor plan information as changes may be made during the .development process, without notice. Always refer to latest IFC design available in the sales office for the most accurate representation of all construction details

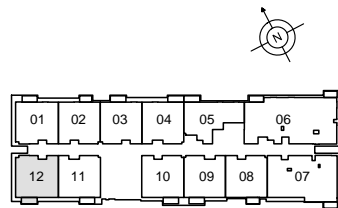
## 1 BEDROOM

### UNIT 12 | 3RD to 6TH FLOOR

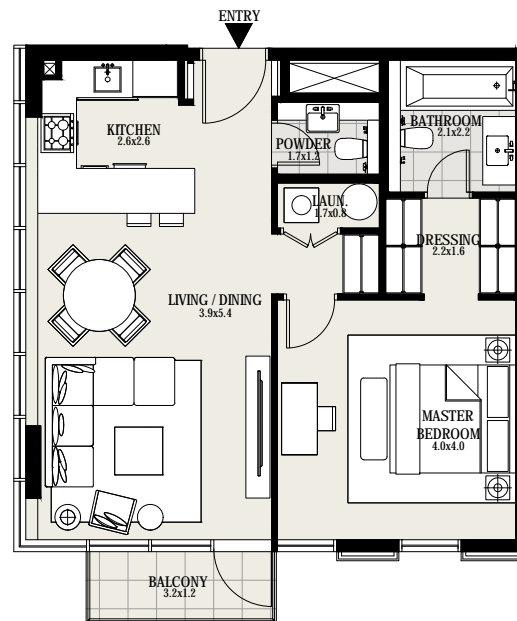
Suite Area	727 sq. ft
Balcony Area	42 sq. ft
Total Area	769 sq. ft



MOHAMMED BIN RASHID  
AL MAKTOUM CITY  
**DISTRICT ONE**



G+6  
KEYPLAN



DISCLAIMER: All measurements, dimensions, coordinates and drawings given as the Floor Plans in this literature are approximate and provided only for the purpose of marketing, illustration, information and general guidance as such drawings are not to scale. All the rooms, swimming pool, sizes, locations, orientations, dimensions, fixtures, fittings, finishes and specifications (including materials for, placement, size of rooms, windows, doors, balcony, furniture's, inbuilt wardrobe etc.) provided in the floor plans may vary as the same have been taken from concept designs prior to the actual development/construction and therefore their accuracy in relation to actual construction cannot be confirmed. Hence, we make no guarantee, warranty or representation as to the accuracy and completeness of the Floor plan information as changes may be made during the .development process, without notice. Always refer to latest IFC design available in the sales office for the most accurate representation of all construction details

**For more information**  
**please call /WhatsAppTrupti Nair on 00971 507851492**  
**Email: [trupti@homeloungeuae.com](mailto:trupti@homeloungeuae.com)**