

DUBAI CREEK HARBOUR

THE COVE BUILDING 1



DUBAI CREEK HARBOUR



YOUR RESORT HOME
IN A WORLD-CLASS CITY



A THRIVING
WATERFRONT
COMMUNITY





SUPREME STYLE
AND SERENITY



DAZZLING DUBAI
SKYLINE



A DELUXE
CREEKSIDE HAVEN





MODERN
LIVING SPACES





RELAX AND PLAY,
EVERY DAY

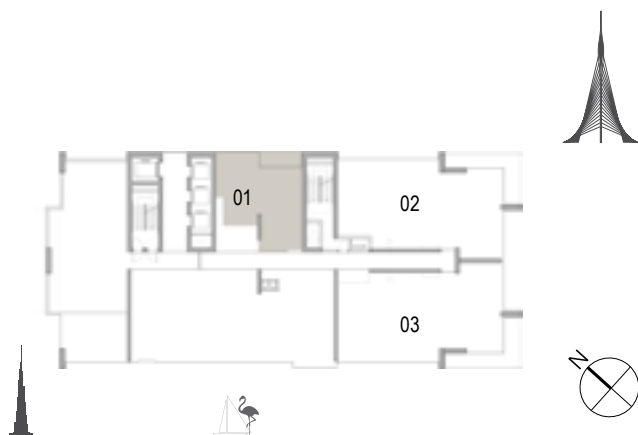




FLOOR PLANS

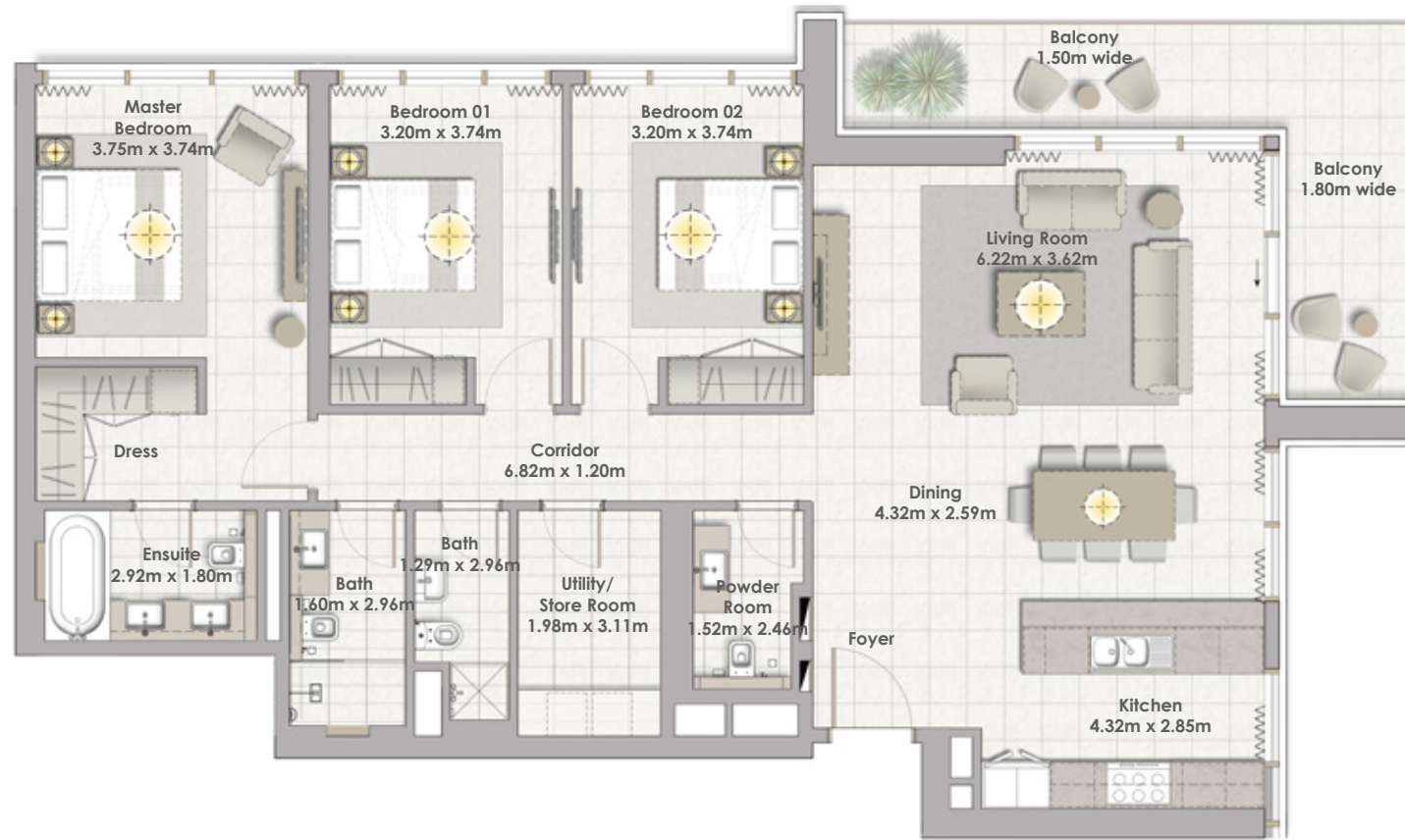
BUILDING 1

Building 01
1 BEDROOM
UNIT 01 / LEVEL GF

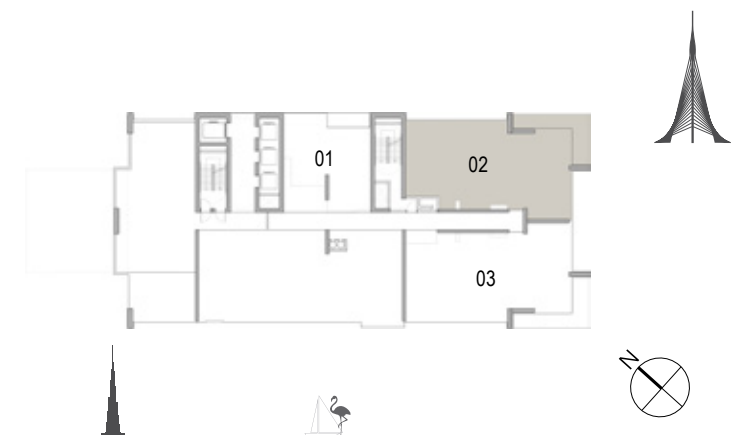


Suite Area	69.63 Sqm. / 749.49 Sqft.
Balcony Area	8.01 Sqm. / 86.22 Sqft.
Total Area	77.64 Sqm. / 835.71 Sqft.

Building 01
3 BEDROOM
UNIT 02 / LEVEL GF



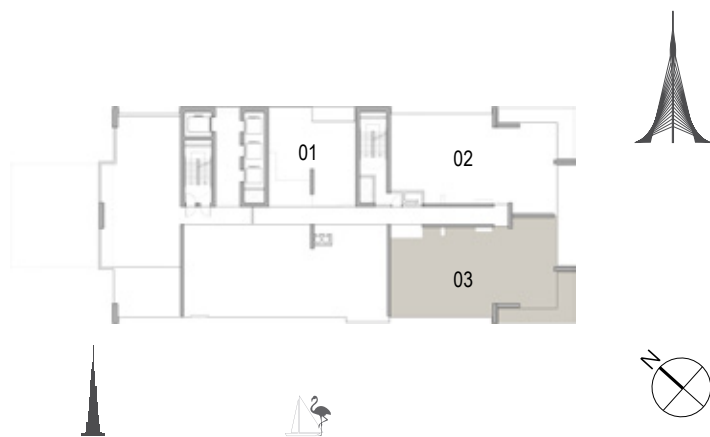
Suite Area	150.21 Sqm. / 1616.85 Sqft.
Balcony Area	21.31 Sqm. / 229.38 Sqft.
Total Area	171.52 Sqm. / 1846.23 Sqft.



FLOOR PLAN 1. All dimensions are in imperial and metric, and measured from finish to finish excluding construction tolerances. 2. All materials, dimensions, and drawings are approximate only. 3. Information is subject to change without notice, at developer's absolute discretion. 4. Actual area may vary from the stated area. 5. Drawings not to scale. 6. All images used are for illustrative purposes only and do not represent the actual size, features, specifications, fittings, and furnishings. 7. The developer reserves the right to make revisions / alterations, at its absolute discretion, without any liability whatsoever.



Building 01
3 BEDROOM
UNIT 03 / LEVEL GF



Suite Area	149.80 Sqm. / 1612.43 Sqft.
Balcony Area	21.33 Sqm. / 229.59 Sqft.
Total Area	171.13 Sqm. / 1842.03 Sqft.

FLOOR PLAN 1. All dimensions are in imperial and metric, and measured from finish to finish excluding construction tolerances. 2. All materials, dimensions, and drawings are approximate only. 3. Information is subject to change without notice, at developer's absolute discretion. 4. Actual area may vary from the stated area. 5. Drawings not to scale. 6. All images used are for illustrative purposes only and do not represent the actual size, features, specifications, fittings, and furnishings. 7. The developer reserves the right to make revisions / alterations, at its absolute discretion, without any liability whatsoever.

Building 01
1 BEDROOM
UNIT 01 / LEVEL 01

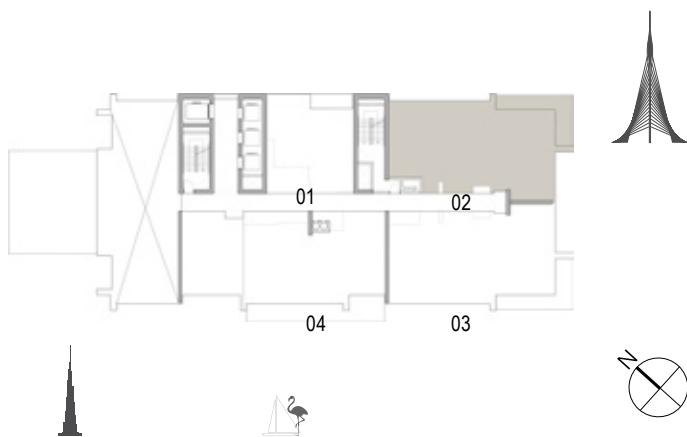


Suite Area	69.73 Sqm. / 750.57 Sqft.
Balcony Area	8.01 Sqm. / 86.22 Sqft.
Total Area	77.74 Sqm. / 836.79 Sqft.





Building 01
3 BEDROOM
UNIT 02 / LEVEL 01



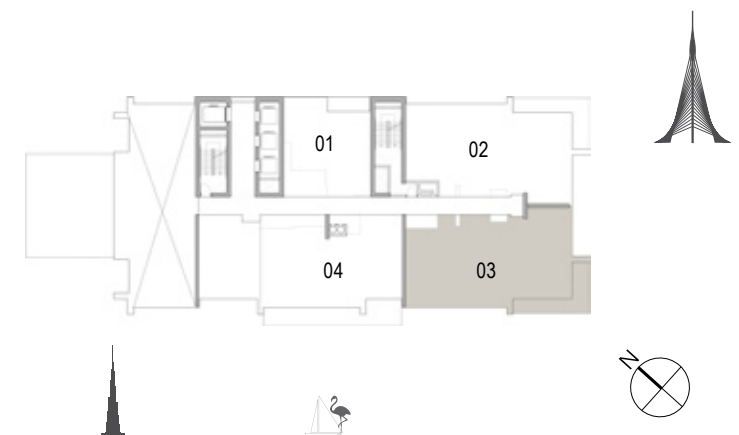
Suite Area	150.33 Sqm. / 1618.14 Sqft.
Balcony Area	21.31 Sqm. / 229.38 Sqft.
Total Area	171.64 Sqm. / 1847.52 Sqft.

FLOOR PLAN 1. All dimensions are in imperial and metric, and measured from finish to finish excluding construction tolerances. 2. All materials, dimensions, and drawings are approximate only. 3. Information is subject to change without notice, at developer's absolute discretion. 4. Actual area may vary from the stated area. 5. Drawings not to scale. 6. All images used are for illustrative purposes only and do not represent the actual size, features, specifications, fittings, and furnishings. 7. The developer reserves the right to make revisions / alterations, at its absolute discretion, without any liability whatsoever.

Building 01
3 BEDROOM
UNIT 03 / LEVEL 01



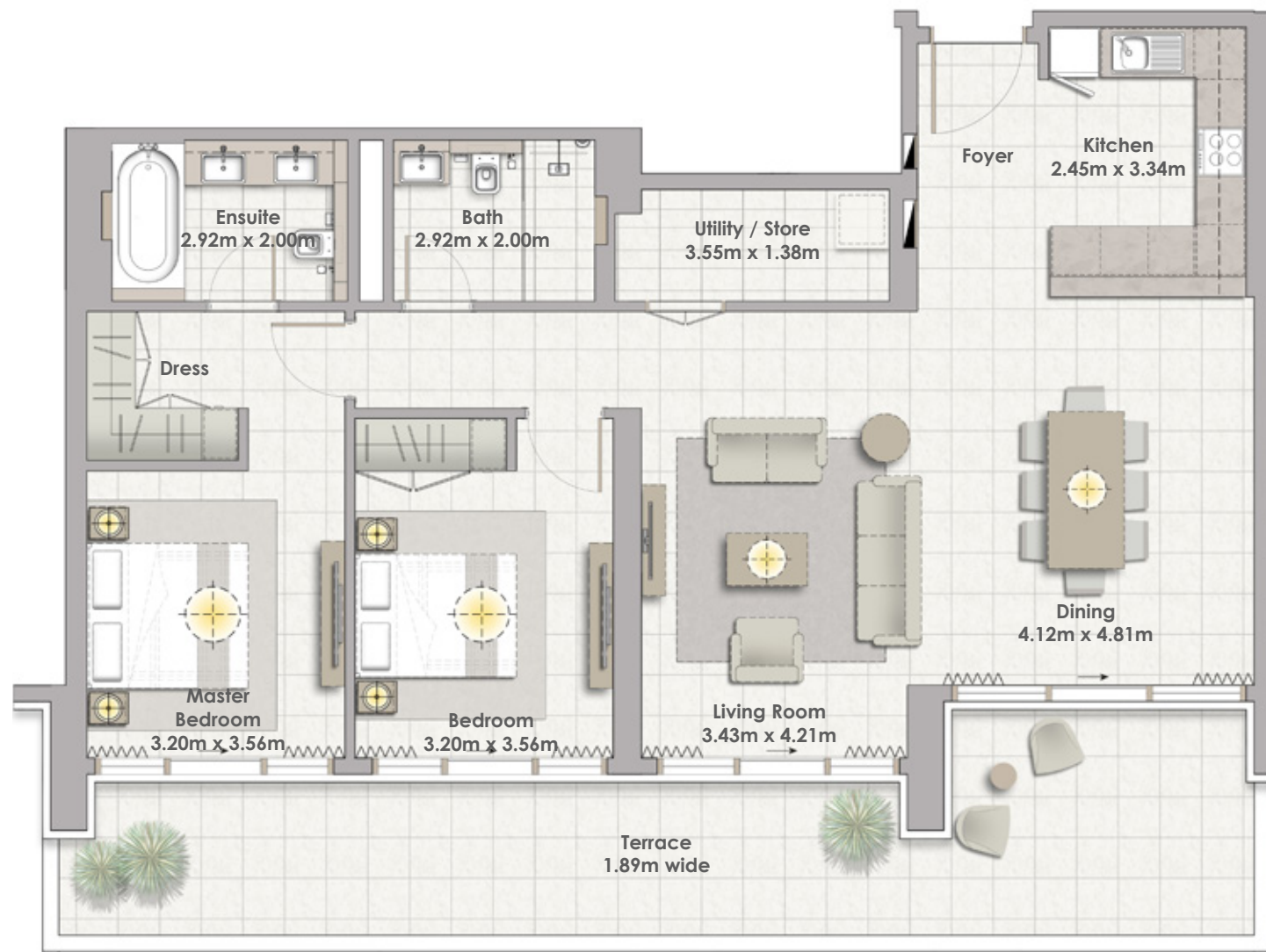
Suite Area	149.80 Sqm. / 1612.43 Sqft.
Balcony Area	21.33 Sqm. / 229.59 Sqft.
Total Area	171.13 Sqm. / 1842.03 Sqft.



FLOOR PLAN 1. All dimensions are in imperial and metric, and measured from finish to finish excluding construction tolerances. 2. All materials, dimensions, and drawings are approximate only. 3. Information is subject to change without notice, at developer's absolute discretion. 4. Actual area may vary from the stated area. 5. Drawings not to scale. 6. All images used are for illustrative purposes only and do not represent the actual size, features, specifications, fittings, and furnishings. 7. The developer reserves the right to make revisions / alterations, at its absolute discretion, without any liability whatsoever.

THE COVE

DUBAI CREEK HARBOUR



Building 01
2 BEDROOM
UNIT 04 / LEVEL 01

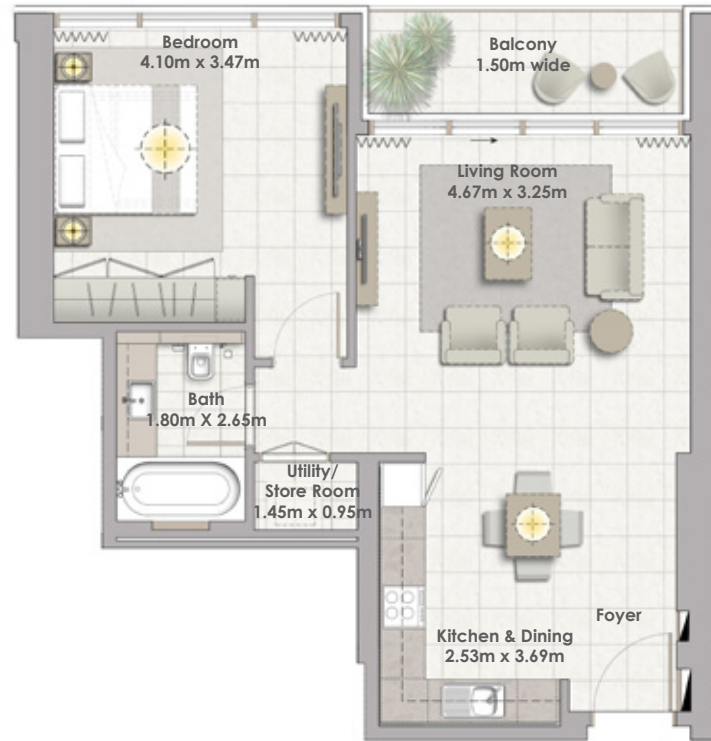


Suite Area	116.37 Sqm. / 1252.60 Sqft.
Terrace Area	36.67 Sqm. / 394.71 Sqft.
Total Area	153.04 Sqm. / 1647.31 Sqft.

FLOOR PLAN 1. All dimensions are in imperial and metric, and measured from finish to finish excluding construction tolerances. 2. All materials, dimensions, and drawings are approximate only. 3. Information is subject to change without notice, at developer's absolute discretion. 4. Actual area may vary from the stated area. 5. Drawings not to scale. 6. All images used are for illustrative purposes only and do not represent the actual size, features, specifications, fittings, and furnishings. 7. The developer reserves the right to make revisions / alterations, at its absolute discretion, without any liability whatsoever.

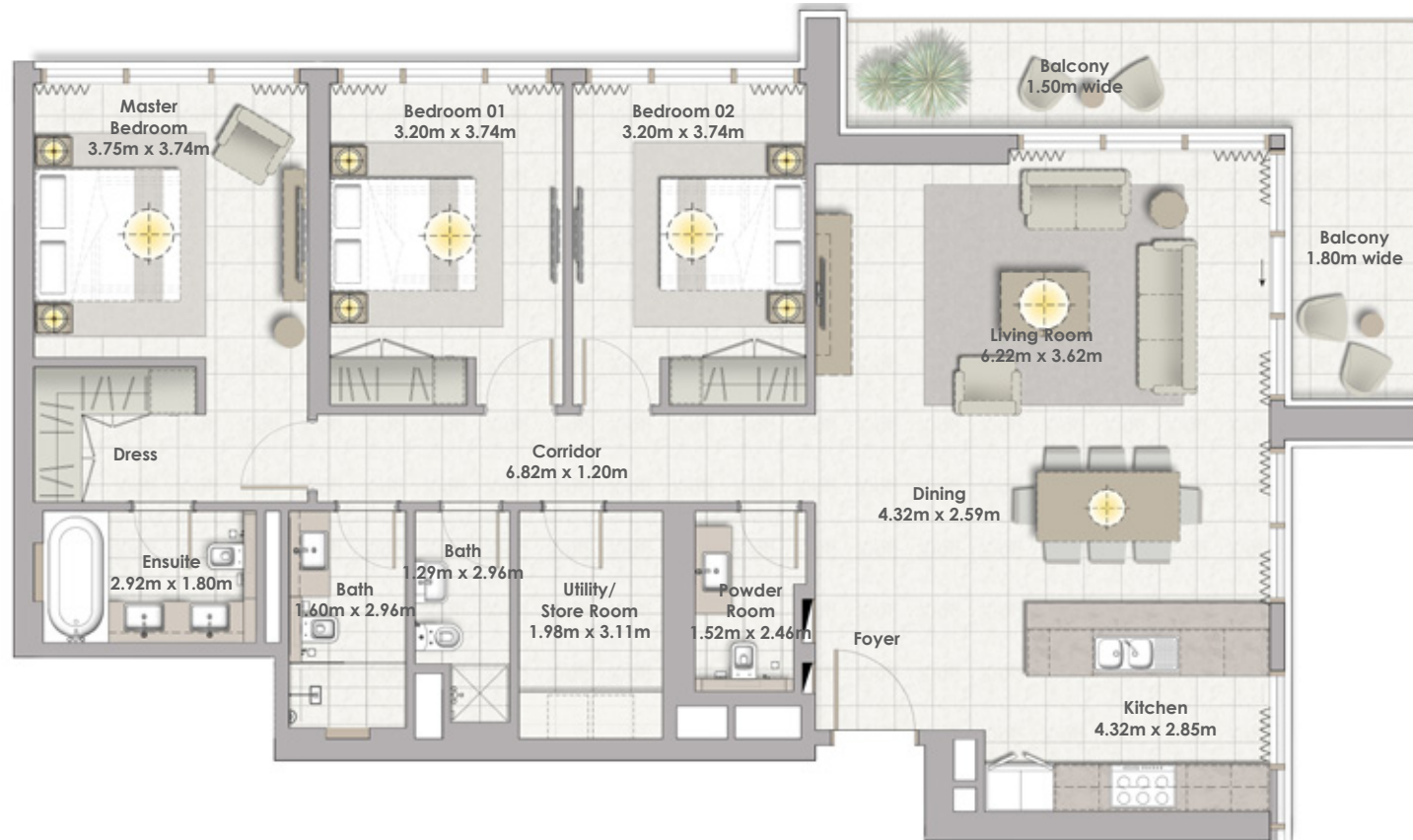


Building 01
1 BEDROOM
UNIT 01 / LEVELS 02-09, 11-19



Suite Area	69.75 Sqm. / 750.78 Sqft.
Balcony Area	8.01 Sqm. / 86.22 Sqft.
Total Area	77.76 Sqm. / 837.00 Sqft.

FLOOR PLAN 1. All dimensions are in imperial and metric, and measured from finish to finish excluding construction tolerances. 2. All materials, dimensions, and drawings are approximate only. 3. Information is subject to change without notice, at developer's absolute discretion. 4. Actual area may vary from the stated area. 5. Drawings not to scale. 6. All images used are for illustrative purposes only and do not represent the actual size, features, specifications, fittings, and furnishings. 7. The developer reserves the right to make revisions / alterations, at its absolute discretion, without any liability whatsoever.



Building 01
3 BEDROOM
UNIT 02 / LEVELS 02-09, 11-19



Suite Area	150.28 Sqm. / 1617.60 Sqft.
Balcony Area	21.31 Sqm. / 229.38 Sqft.
Total Area	171.59 Sqm. / 1846.98 Sqft.

FLOOR PLAN 1. All dimensions are in imperial and metric, and measured from finish to finish excluding construction tolerances. 2. All materials, dimensions, and drawings are approximate only. 3. Information is subject to change without notice, at developer's absolute discretion. 4. Actual area may vary from the stated area. 5. Drawings not to scale. 6. All images used are for illustrative purposes only and do not represent the actual size, features, specifications, fittings, and furnishings. 7. The developer reserves the right to make revisions / alterations, at its absolute discretion, without any liability whatsoever.

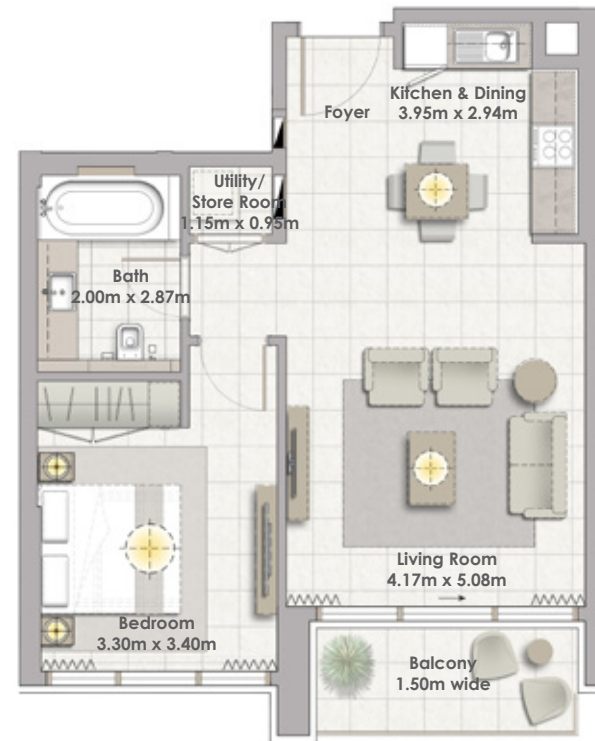
Building 01
3 BEDROOM
UNIT 03 / LEVELS 02-09, 11-19



Suite Area	149.83 Sqm. / 1612.76 Sqft.
Balcony Area	21.31 Sqm. / 229.38 Sqft.
Total Area	171.14 Sqm. / 1842.14 Sqft.



FLOOR PLAN 1. All dimensions are in imperial and metric, and measured from finish to finish excluding construction tolerances. 2. All materials, dimensions, and drawings are approximate only. 3. Information is subject to change without notice, at developer's absolute discretion. 4. Actual area may vary from the stated area. 5. Drawings not to scale. 6. All images used are for illustrative purposes only and do not represent the actual size, features, specifications, fittings, and furnishings. 7. The developer reserves the right to make revisions / alterations, at its absolute discretion, without any liability whatsoever.



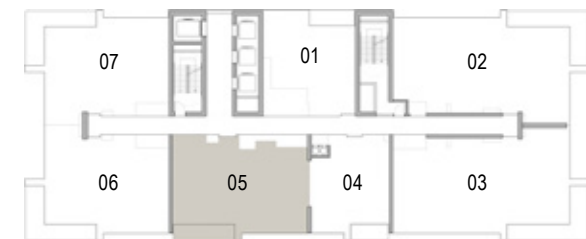
Building 01
1 BEDROOM
UNIT 04 / LEVELS 02-09, 11-19



Suite Area	61.53 Sqm. / 662.30 Sqft.
Balcony Area	6.78 Sqm. / 72.98 Sqft.
Total Area	68.31 Sqm. / 735.28 Sqft.

FLOOR PLAN 1. All dimensions are in imperial and metric, and measured from finish to finish excluding construction tolerances. 2. All materials, dimensions, and drawings are approximate only. 3. Information is subject to change without notice, at developer's absolute discretion. 4. Actual area may vary from the stated area. 5. Drawings not to scale. 6. All images used are for illustrative purposes only and do not represent the actual size, features, specifications, fittings, and furnishings. 7. The developer reserves the right to make revisions / alterations, at its absolute discretion, without any liability whatsoever.

Building 01
2 BEDROOM
UNIT 05 / LEVELS 02-09, 11-19



Suite Area	109.15 Sqm. / 1174.88 Sqft.
Balcony Area	10.65 Sqm. / 114.64 Sqft.
Total Area	119.80 Sqm. / 1289.52 Sqft.



FLOOR PLAN 1. All dimensions are in imperial and metric, and measured from finish to finish excluding construction tolerances. 2. All materials, dimensions, and drawings are approximate only. 3. Information is subject to change without notice, at developer's absolute discretion. 4. Actual area may vary from the stated area. 5. Drawings not to scale. 6. All images used are for illustrative purposes only and do not represent the actual size, features, specifications, fittings, and furnishings. 7. The developer reserves the right to make revisions / alterations, at its absolute discretion, without any liability whatsoever.





Building 01
2 BEDROOM
UNIT 06 / LEVELS 02-09, 11-19



Suite Area	105.01 Sqm. / 1130.32 Sqft.
Balcony Area	19.52 Sqm. / 210.11 Sqft.
Total Area	124.53 Sqm. / 1340.43 Sqft.

FLOOR PLAN 1. All dimensions are in imperial and metric, and measured from finish to finish excluding construction tolerances. 2. All materials, dimensions, and drawings are approximate only. 3. Information is subject to change without notice, at developer's absolute discretion. 4. Actual area may vary from the stated area. 5. Drawings not to scale. 6. All images used are for illustrative purposes only and do not represent the actual size, features, specifications, fittings, and furnishings. 7. The developer reserves the right to make revisions / alterations, at its absolute discretion, without any liability whatsoever.

Building 01
2 BEDROOM
UNIT 07 / LEVELS 02-09, 11-19



Suite Area	105.40 Sqm. / 1134.52 Sqft.
Balcony Area	19.65 Sqm. / 211.51 Sqft.
Total Area	125.05 Sqm. / 1346.03 Sqft.



FLOOR PLAN 1. All dimensions are in imperial and metric, and measured from finish to finish excluding construction tolerances. 2. All materials, dimensions, and drawings are approximate only. 3. Information is subject to change without notice, at developer's absolute discretion. 4. Actual area may vary from the stated area. 5. Drawings not to scale. 6. All images used are for illustrative purposes only and do not represent the actual size, features, specifications, fittings, and furnishings. 7. The developer reserves the right to make revisions / alterations, at its absolute discretion, without any liability whatsoever.



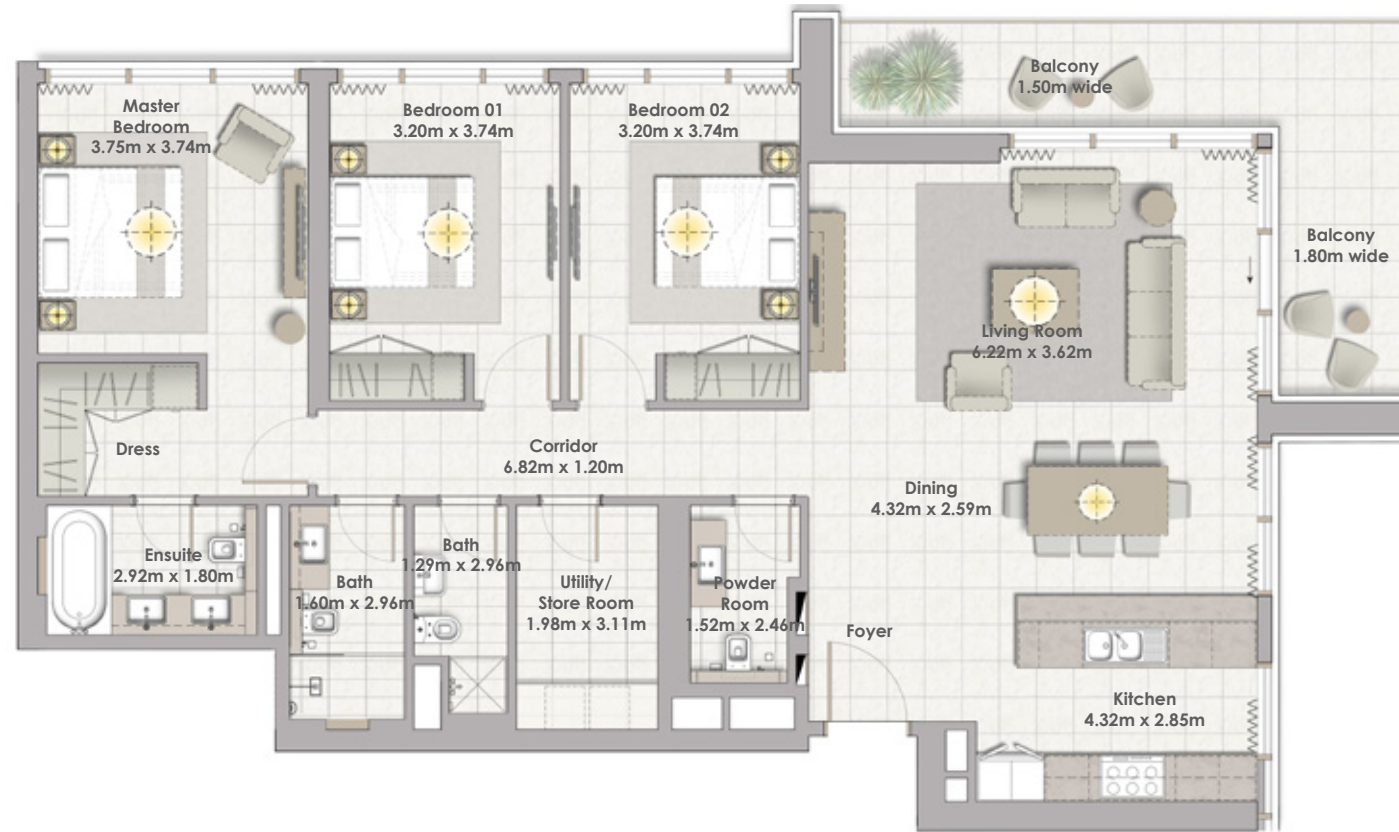
Building 01
1 BEDROOM
UNIT 01 / LEVEL 10



Suite Area	58.95 Sqm. / 634.53 Sqft.
Balcony Area	8.01 Sqm. / 86.22 Sqft.
Total Area	66.96 Sqm. / 720.75 Sqft.

FLOOR PLAN 1. All dimensions are in imperial and metric, and measured from finish to finish excluding construction tolerances. 2. All materials, dimensions, and drawings are approximate only. 3. Information is subject to change without notice, at developer's absolute discretion. 4. Actual area may vary from the stated area. 5. Drawings not to scale. 6. All images used are for illustrative purposes only and do not represent the actual size, features, specifications, fittings, and furnishings. 7. The developer reserves the right to make revisions / alterations, at its absolute discretion, without any liability whatsoever.

Building 01
3 BEDROOM
UNIT 02 / LEVEL 10



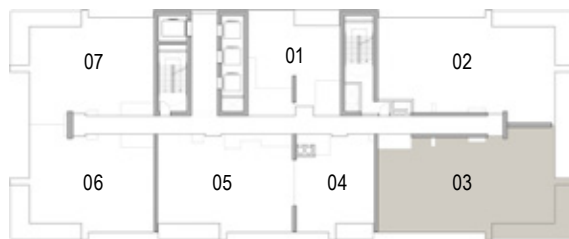
Suite Area	150.28 Sqm. / 1617.60 Sqft.
Balcony Area	21.31 Sqm. / 229.38 Sqft.
Total Area	171.59 Sqm. / 1846.98 Sqft.



FLOOR PLAN 1. All dimensions are in imperial and metric, and measured from finish to finish excluding construction tolerances. 2. All materials, dimensions, and drawings are approximate only. 3. Information is subject to change without notice, at developer's absolute discretion. 4. Actual area may vary from the stated area. 5. Drawings not to scale. 6. All images used are for illustrative purposes only and do not represent the actual size, features, specifications, fittings, and furnishings. 7. The developer reserves the right to make revisions / alterations, at its absolute discretion, without any liability whatsoever.



Building 01
3 BEDROOM
UNIT 03 / LEVEL 10

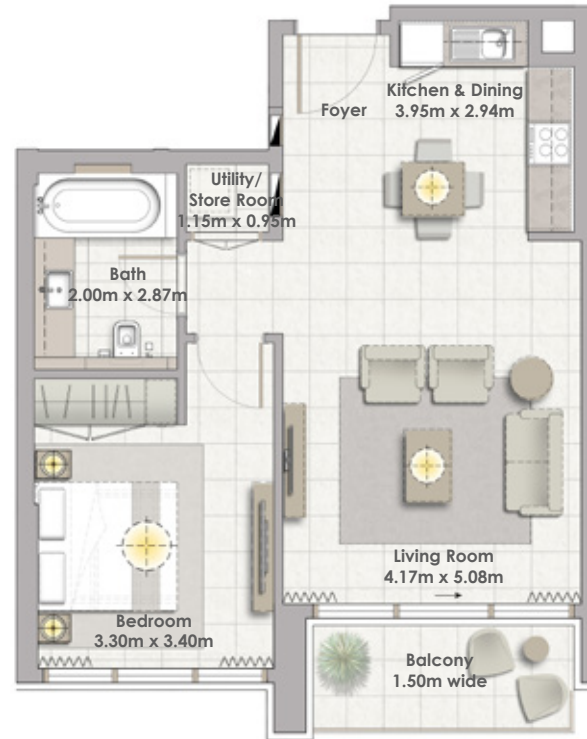


Suite Area	149.75 Sqm. / 1611.90 Sqft.
Balcony Area	21.33 Sqm. / 229.59 Sqft.
Total Area	171.08 Sqm. / 1841.49 Sqft.

FLOOR PLAN 1. All dimensions are in imperial and metric, and measured from finish to finish excluding construction tolerances. 2. All materials, dimensions, and drawings are approximate only. 3. Information is subject to change without notice, at developer's absolute discretion. 4. Actual area may vary from the stated area. 5. Drawings not to scale. 6. All images used are for illustrative purposes only and do not represent the actual size, features, specifications, fittings, and furnishings. 7. The developer reserves the right to make revisions / alterations, at its absolute discretion, without any liability whatsoever.



Building 01
1 BEDROOM
UNIT 04 / LEVEL 10



Suite Area	61.53 Sqm. / 662.30 Sqft.
Balcony Area	6.78 Sqm. / 72.98 Sqft.
Total Area	68.31 Sqm. / 735.28 Sqft.



FLOOR PLAN 1. All dimensions are in imperial and metric, and measured from finish to finish excluding construction tolerances. 2. All materials, dimensions, and drawings are approximate only. 3. Information is subject to change without notice, at developer's absolute discretion. 4. Actual area may vary from the stated area. 5. Drawings not to scale. 6. All images used are for illustrative purposes only and do not represent the actual size, features, specifications, fittings, and furnishings. 7. The developer reserves the right to make revisions / alterations, at its absolute discretion, without any liability whatsoever.



Building 01
2 BEDROOM
UNIT 05 / LEVEL 10



Suite Area	109.15 Sqm. / 1174.88 Sqft.
Balcony Area	10.65 Sqm. / 114.64 Sqft.
Total Area	119.80 Sqm. / 1289.52 Sqft.

FLOOR PLAN 1. All dimensions are in imperial and metric, and measured from finish to finish excluding construction tolerances. 2. All materials, dimensions, and drawings are approximate only. 3. Information is subject to change without notice, at developer's absolute discretion. 4. Actual area may vary from the stated area. 5. Drawings not to scale. 6. All images used are for illustrative purposes only and do not represent the actual size, features, specifications, fittings, and furnishings. 7. The developer reserves the right to make revisions / alterations, at its absolute discretion, without any liability whatsoever.

Building 01
2 BEDROOM
UNIT 06 / LEVEL 10



Suite Area	105.01 Sqm. / 1130.32 Sqft.
Balcony Area	19.52 Sqm. / 210.11 Sqft.
Total Area	124.53 Sqm. / 1340.43 Sqft.



FLOOR PLAN 1. All dimensions are in imperial and metric, and measured from finish to finish excluding construction tolerances. 2. All materials, dimensions, and drawings are approximate only. 3. Information is subject to change without notice, at developer's absolute discretion. 4. Actual area may vary from the stated area. 5. Drawings not to scale. 6. All images used are for illustrative purposes only and do not represent the actual size, features, specifications, fittings, and furnishings. 7. The developer reserves the right to make revisions / alterations, at its absolute discretion, without any liability whatsoever.



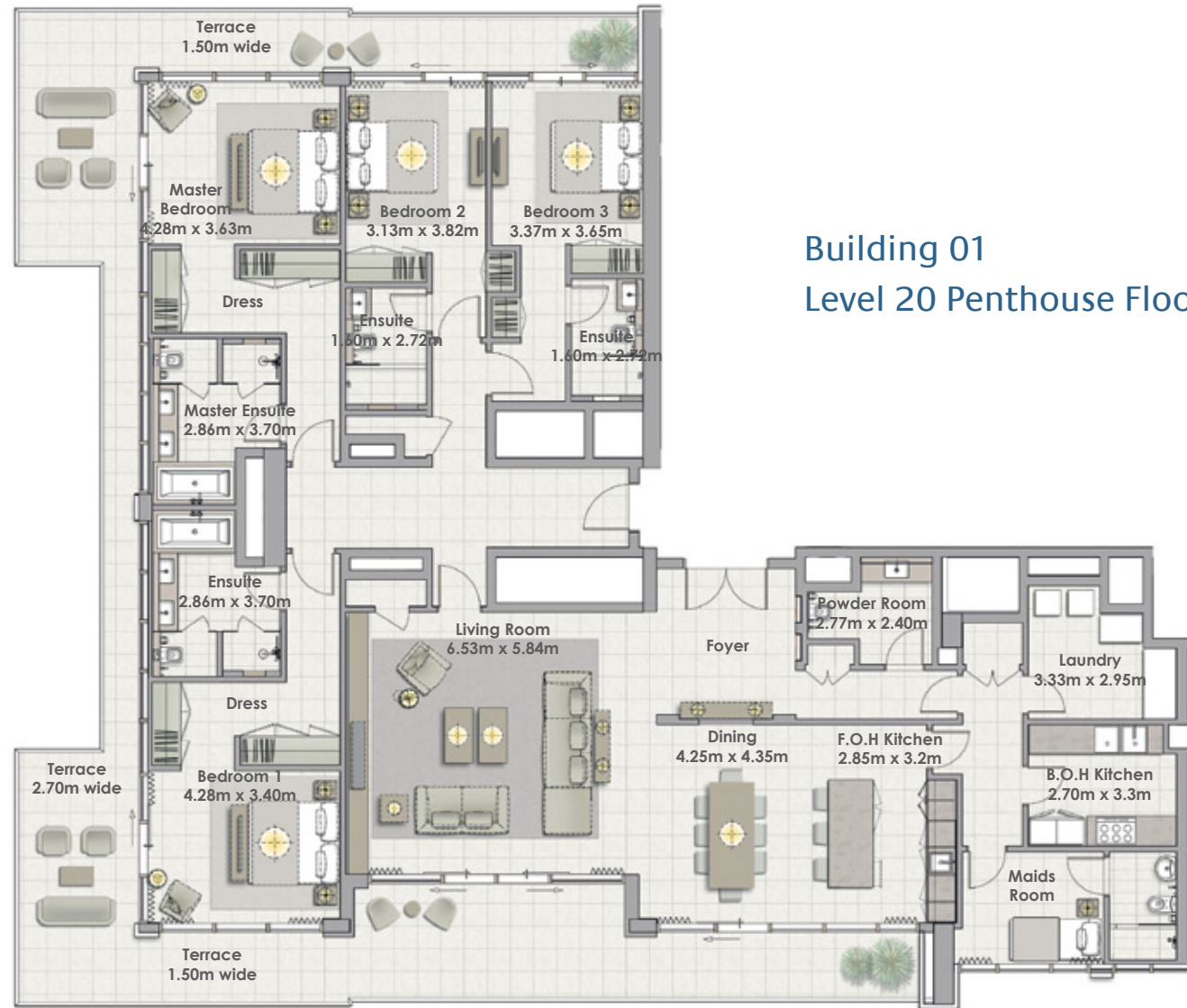


Building 01
2 BEDROOM
UNIT 07 / LEVEL 10



Suite Area	105.40 Sqm. / 1134.52 Sqft.
Balcony Area	19.65 Sqm. / 211.51 Sqft.
Total Area	125.05 Sqm. / 1346.03 Sqft.

FLOOR PLAN 1. All dimensions are in imperial and metric, and measured from finish to finish excluding construction tolerances. 2. All materials, dimensions, and drawings are approximate only. 3. Information is subject to change without notice, at developer's absolute discretion. 4. Actual area may vary from the stated area. 5. Drawings not to scale. 6. All images used are for illustrative purposes only and do not represent the actual size, features, specifications, fittings, and furnishings. 7. The developer reserves the right to make revisions / alterations, at its absolute discretion, without any liability whatsoever.



Building 01
Level 20 Penthouse Floor Plan - Unit 01

Building 01
4 BEDROOM
UNIT 01/ LEVELS 20



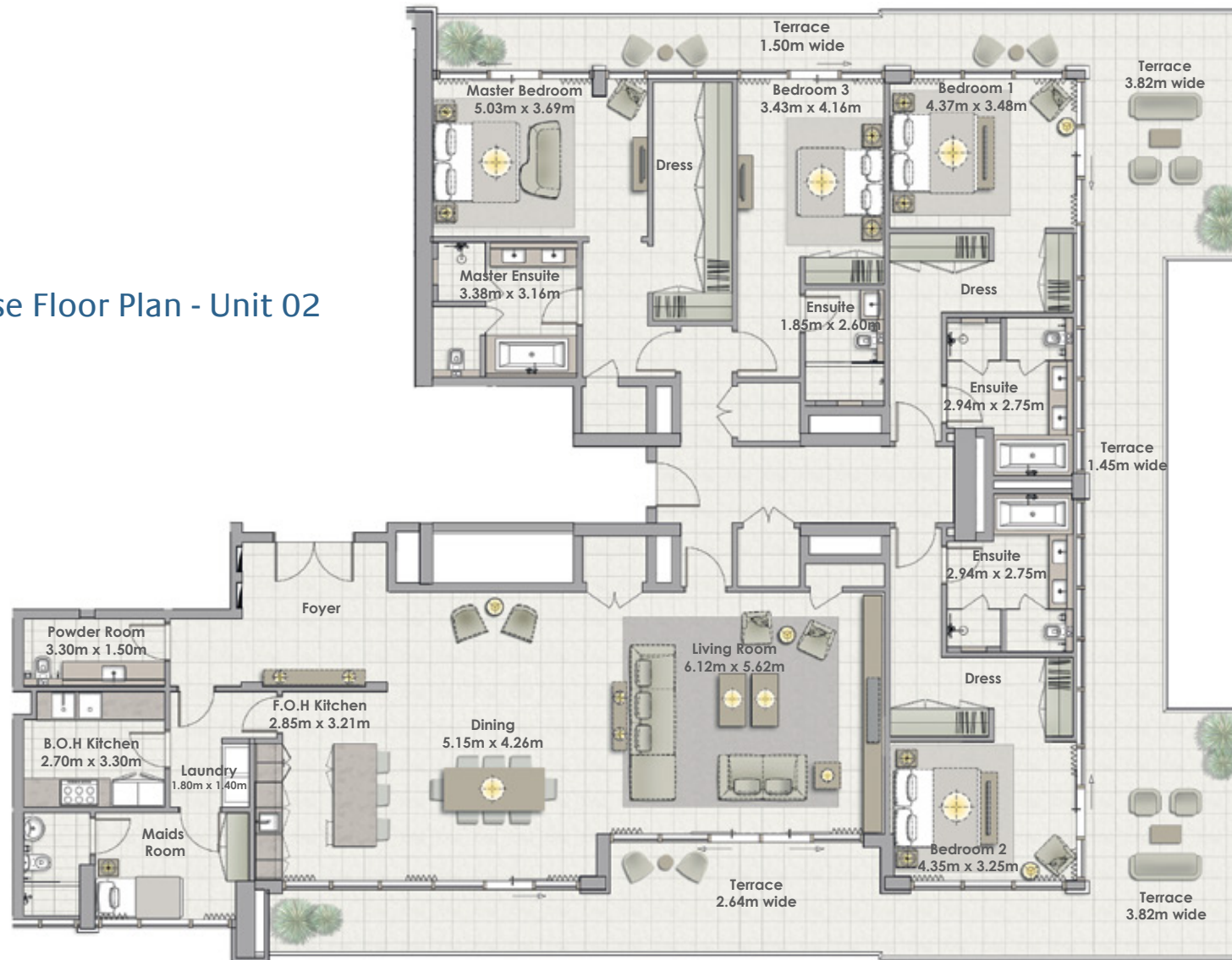
Suite Area	331.27 Sqm. / 3565.76 Sqft.
Balcony Area	123.31 Sqm. / 1327 Sqft.
Total Area	454.58 Sqm. / 4893.06 Sqft.

FLOOR PLAN 1. All dimensions are in imperial and metric, and measured from finish to finish excluding construction tolerances. 2. All materials, dimensions, and drawings are approximate only. 3. Information is subject to change without notice, at developer's absolute discretion. 4. Actual area may vary from the stated area. 5. Drawings not to scale. 6. All images used are for illustrative purposes only and do not represent the actual size, features, specifications, fittings, and furnishings. 7. The developer reserves the right to make revisions / alterations, at its absolute discretion, without any liability whatsoever.

THE COVE

DUBAI CREEK HARBOUR

Building 01 Level 20 Penthouse Floor Plan - Unit 02



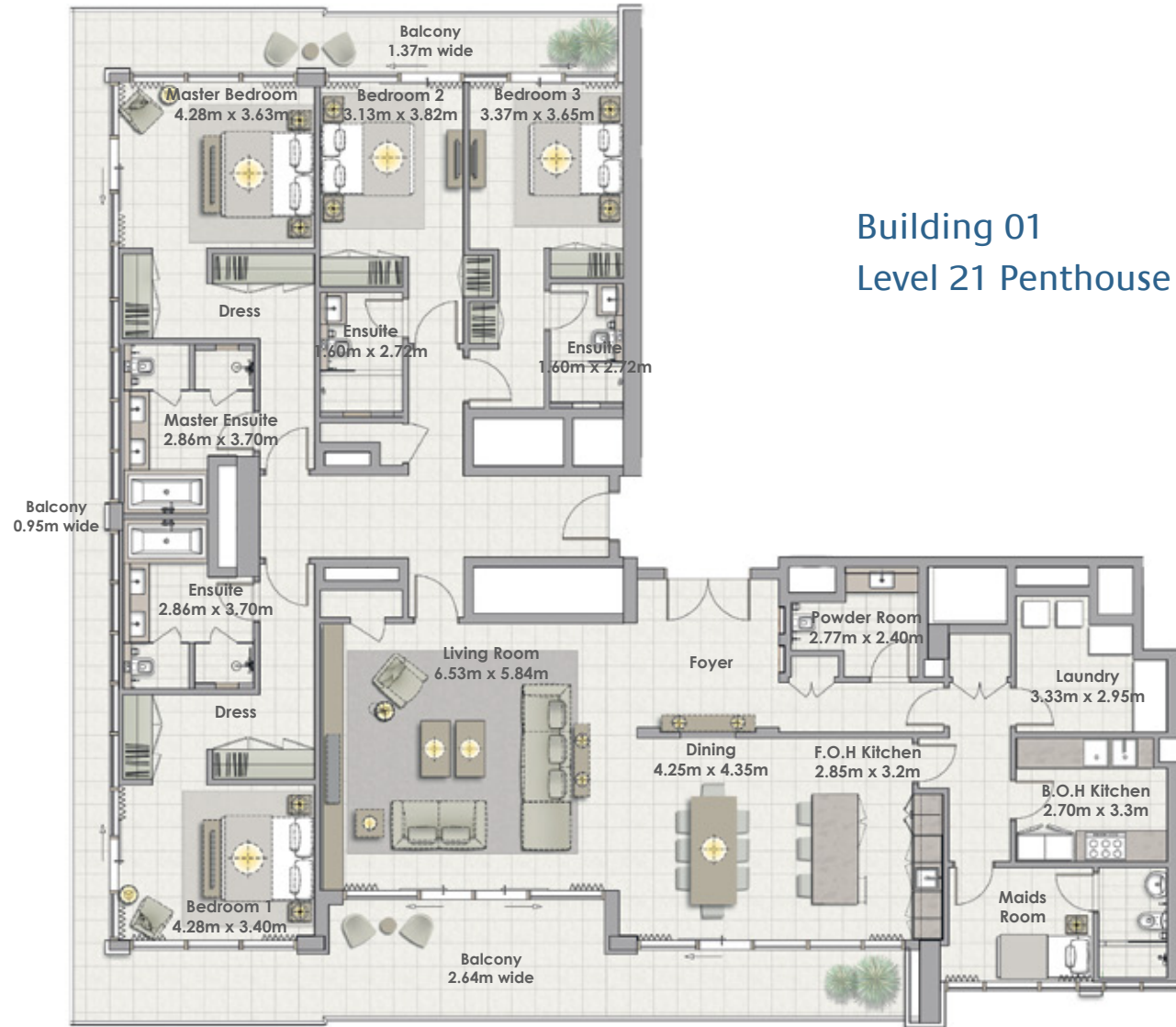
Building 01 4 BEDROOM UNIT 02/ LEVELS 20

Suite Area	291.70 Sqm. / 3139.83 Sqft.
Terrace Area	91.33 Sqm. / 983.07 Sqft.
Total Area	383.03 Sqm. / 4122.90 Sqft.



FLOOR PLAN 1. All dimensions are in imperial and metric, and measured from finish to finish excluding construction tolerances. 2. All materials, dimensions, and drawings are approximate only. 3. Information is subject to change without notice, at developer's absolute discretion. 4. Actual area may vary from the stated area. 5. Drawings not to scale. 6. All images used are for illustrative purposes only and do not represent the actual size, features, specifications, fittings, and furnishings. 7. The developer reserves the right to make revisions / alterations, at its absolute discretion, without any liability whatsoever.





Building 01
Level 21 Penthouse Floor Plan - Unit 01

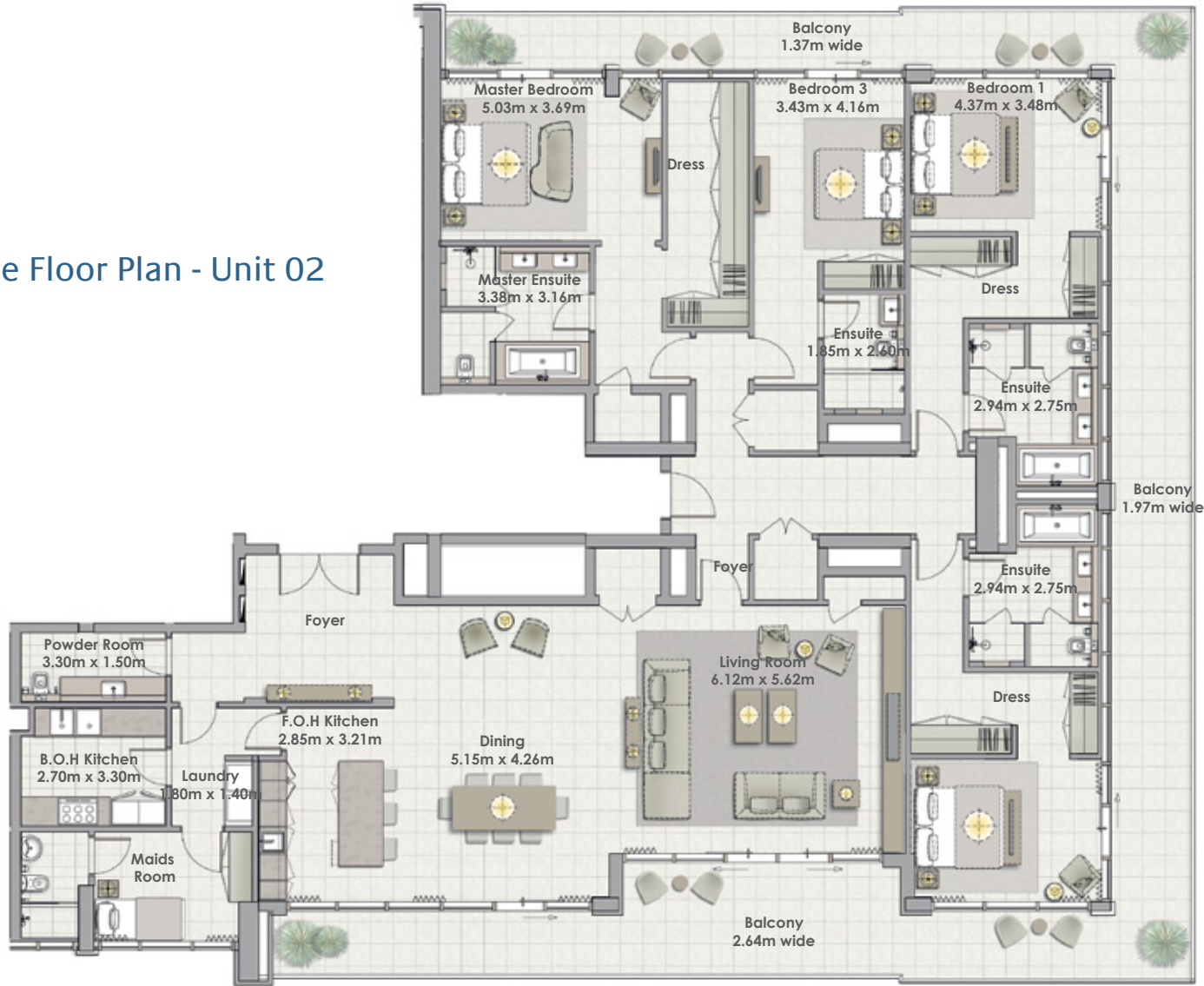
Building 01
4 BEDROOM
UNIT 01/ LEVELS 21



Suite Area	331.27 Sqm. / 3565.76Sqft.
Balcony Area	101.43 Sqm. / 1091.78Sqft.
Total Area	432.70 Sqm. / 4657.54 Sqft.

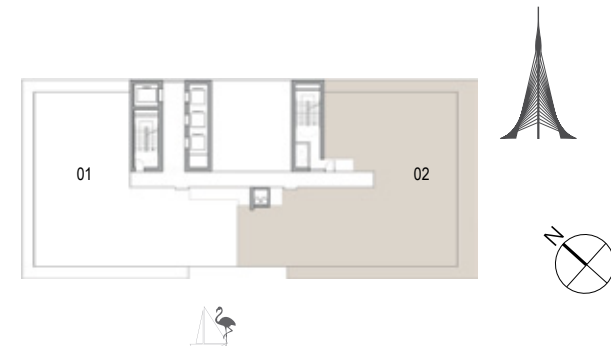
FLOOR PLAN 1. All dimensions are in imperial and metric, and measured from finish to finish excluding construction tolerances. 2. All materials, dimensions, and drawings are approximate only. 3. Information is subject to change without notice, at developer's absolute discretion. 4. Actual area may vary from the stated area. 5. Drawings not to scale. 6. All images used are for illustrative purposes only and do not represent the actual size, features, specifications, fittings, and furnishings. 7. The developer reserves the right to make revisions / alterations, at its absolute discretion, without any liability whatsoever.

Building 01
Level 21 Penthouse Floor Plan - Unit 02



Building 01
4 BEDROOM
UNIT 02/ LEVELS 21

Suite Area	291.70 Sqm. / 3139.83 Sqft.
Terrace Area	69.87 Sqm. / 752.07Sqft.
Total Area	361.57 Sqm. / 3891.90 Sqft.



FLOOR PLAN 1. All dimensions are in imperial and metric, and measured from finish to finish excluding construction tolerances. 2. All materials, dimensions, and drawings are approximate only. 3. Information is subject to change without notice, at developer's absolute discretion. 4. Actual area may vary from the stated area. 5. Drawings not to scale. 6. All images used are for illustrative purposes only and do not represent the actual size, features, specifications, fittings, and furnishings. 7. The developer reserves the right to make revisions / alterations, at its absolute discretion, without any liability whatsoever.

DUBAI CREEK

HARBOUR

THE COVE

For more information
please call /WhatsAppTrupti Nair on 00971 507851492
Email: trupti@homeloungeuae.com

