



**CENTRAL PARK**  
at City Walk







Choose  
nature  
as your  
neighbour  
in the city.

Central Park at City Walk is a superb setting for a healthier and active lifestyle, with morning park runs, fresh air and fun evenings being part of your routine. Press pause on life whenever you want, and find the best restaurants, cafes, sophisticated stores and the ultimate entertainment right at your doorstep.







The life  
you dream  
in the place  
you want.

Experience the tranquility of true park living, whilst still enjoying the excitement and vibrancy of City Walk. This urban lifestyle destination by Meraas is a family-friendly neighbourhood with a sophisticated ambiance and a unique mix of residences. Live in an oasis close to all you need for one good day after another.









Beautiful  
gardens and  
blue skies  
can change  
everything.

Everything feels better close to nature. Central Park at City Walk has been imagined with the future in mind. Sleek, contemporary and spacious apartments offer awe-inspiring views of the park and also Dubai's famed skyline. Select between 1, 2, 3 & 4 bedroom with outstanding amenities and freedom of space in a lush green community.







CENTRAL

PARK

# Shades of green as far as the eye can see.

Central Park at City Walk is home to a multitude of facilities that cannot be found in any integrated residential development. These include:

- Pools and water play
- Kids play area
- Running track
- Dog Park
- Multi-use games and sports lawns
- Tennis and squash courts
- Half-court basketball
- Skate-able landscape
- Games tables
- Outdoor gym and fitness station
- Spa and Sauna
- Yoga and meditation areas
- F&B and retail stores
- Outdoor barbecue areas
- Function rooms
- Events area
- Picnic pavilions
- Nursery









Nature's  
calm  
combined  
with urban  
energy.



## Connectivity

Connected by a well-established road network, and located between Jumeirah street and Sheikh Zayed road, Central Park at City Walk is part of a successful ongoing masterplan development. A sought-after neighborhood comprising the best of Dubai.

- Inside City Walk
- 5 minutes from Dubai Arena
- 10 minutes to Jumeirah Beach
- 15 minutes to Burj Al Arab
- 15 minutes to Dubai International Airport
- 16 minutes to La Mer Beach
- 17 minutes to The Palm Jumeirah
- 20 minutes to Dubai Marina
- 50 minutes to Al Maktoum International Airport









# CENTRAL PARK

at City Walk

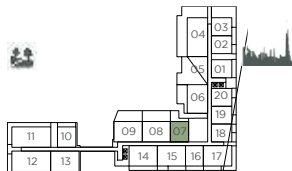
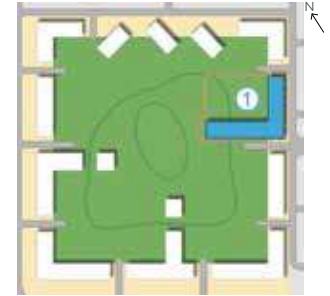
FLOOR PLANS

Building 1

# CENTRAL PARK at City Walk

1 BEDROOM  
BUILDING 1

APARTMENT TYPE A1  
LEVEL 1



LEVEL 1

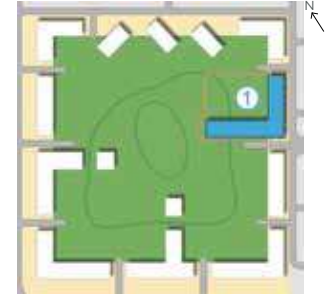
UNIT NO.	SUITE AREA		BALCONY AREA		TOTAL AREA	
	SQM	SQFT	SQM	SQFT	SQM	SQFT
107	79.51	855.85	24.36	262.21	103.87	1,118.06

UNITS DENOTED AS "M" ARE MIRRORED IN REALITY FROM WHAT IS SHOWN ON THE PLAN

# CENTRAL PARK at City Walk

4 BEDROOM  
BUILDING 1

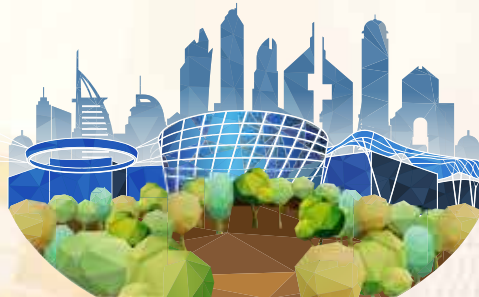
APARTMENT TYPE C1  
LEVEL 9



LEVEL 9

UNIT NO.	SUITE AREA		BALCONY AREA		TOTAL AREA	
	SQM	SQFT	SQM	SQFT	SQM	SQFT
910	255.98	2,755.37	226.60	2,439.12	482.58	5,194.49

UNITS DENOTED AS "M" ARE MIRRORED IN REALITY FROM WHAT IS SHOWN ON THE PLAN



**CENTRAL PARK**  
at City Walk

**For more information**

please call /WhatsAppTrupti Nair on 00971 507851492

Email: [trupti@homeloungeuae.com](mailto:trupti@homeloungeuae.com)

**||| MERAAS**