



# BERKELEY PLACE

COMING SOON

PROJECT BRIEF

An aerial view of a modern, multi-story building at dusk. The building features a prominent rooftop pool with a glowing blue interior and a surrounding lounge area with lounge chairs and a large tree. The building's facade is illuminated with warm lights, and the sky is a mix of orange and blue. The text "EXCEPTIONAL LIVING HAS A NEW ADDRESS IN MEYDAN" is overlaid on the left side of the image.

EXCEPTIONAL LIVING  
HAS A NEW ADDRESS  
IN MEYDAN



# DRIVING DISTANCE



**4 MINUTES**  
North London  
Collegiate School



**4 MINUTES**  
Hearthland  
International School



**10 MINUTES**  
Meydan One  
Mall



**10 MINUTES**  
Meydan Racecourse



**10 MINUTES**  
Ras Al Khor Wildlife  
Sanctuary



**12 MINUTES**  
Downtown Dubai



**12 MINUTES**  
Dubai Opera



**12 MINUTES**  
The Dubai Mall &  
Burj Khalifa



**15 MINUTES**  
Dubai International  
Financial Centre



**17 MINUTES**  
Dubai International  
Airport



**18 MINUTES**  
Museum of the Future



**20 MINUTES**  
Emirates Golf Club



**20 MINUTES**  
Palm Jumeirah



**30 MINUTES**  
Al Maktoum  
International Airport



ELINGTON



# BERKELEY PLACE

BERKELEY  
PLACE

# WELCOME TO BERKELEY PLACE

Berkeley Place is Ellington Properties' latest design-led project that raises the bar in exceptional living.

Berkeley Place is an elegant 12-storey building that includes studios, one and two-bedroom apartments. The residence features a slew of wellness and entertainment amenities that add to its exclusivity.

Berkeley Place stands out for its distinct geometries as it soars against Dubai's dazzling city views. The building features an eye-catching façade that's punctuated by balconies. An air of tranquillity and calm is weaved around the residence with a thoughtfully designed podium that features inviting walkways and plenty of dedicated areas for relaxation and healthy activities. The rooftop captures the exclusivity of the residence with a slew of amenities including an infinity pool, a lavish lounge with viewing deck.



## Building Configuration

Ground Floor

2 Podium Floors

12 Residential Floors

Rooftop amenities

## Unit Types

Studios, 1 bedroom and 2 bedroom apartments

## Floor to Ceiling Heights

Living Room:  $\pm 3$  m

Bedrooms:  $\pm 3$  m

Bathrooms:  $\pm 2.4$  m

Kitchen:  $\pm 2.4$  m

## Elevators

2 passenger elevators

1 service lift



## Amenities within the project

- Hotel style lobby and lounge with areas for newspapers and magazines, a refreshment station, a kids zone, a work space, lounge space and ample bookshelves for inspiring reads.
- Outdoor urban basketball area, bicycle parking and maintenance stand and EV charging stations
- Podium level signature fitness centre with indoor and outdoor equipment and workout space, outdoor yoga retreat, change room facilities including steam and sauna.
- Arcade party room with outdoor space.
- Rooftop entertaining space with BBQ, lounge and dining zones overlooking the infinity pool with city views

## Ownership

Freehold

## Parking

1 car parking per apartment





## Anticipated Completion Date

Q4 2024

## Size Range Per Unit Type

### Studio

From 557 sq. ft to 607 sq. ft

### 1 Bedroom

From 801 sq. ft to 1,030 sq. ft

### 2 Bedrooms

From 1,180 sq. ft to 1,499 sq. ft

## Number of Units Per Type

Studios = 12 units

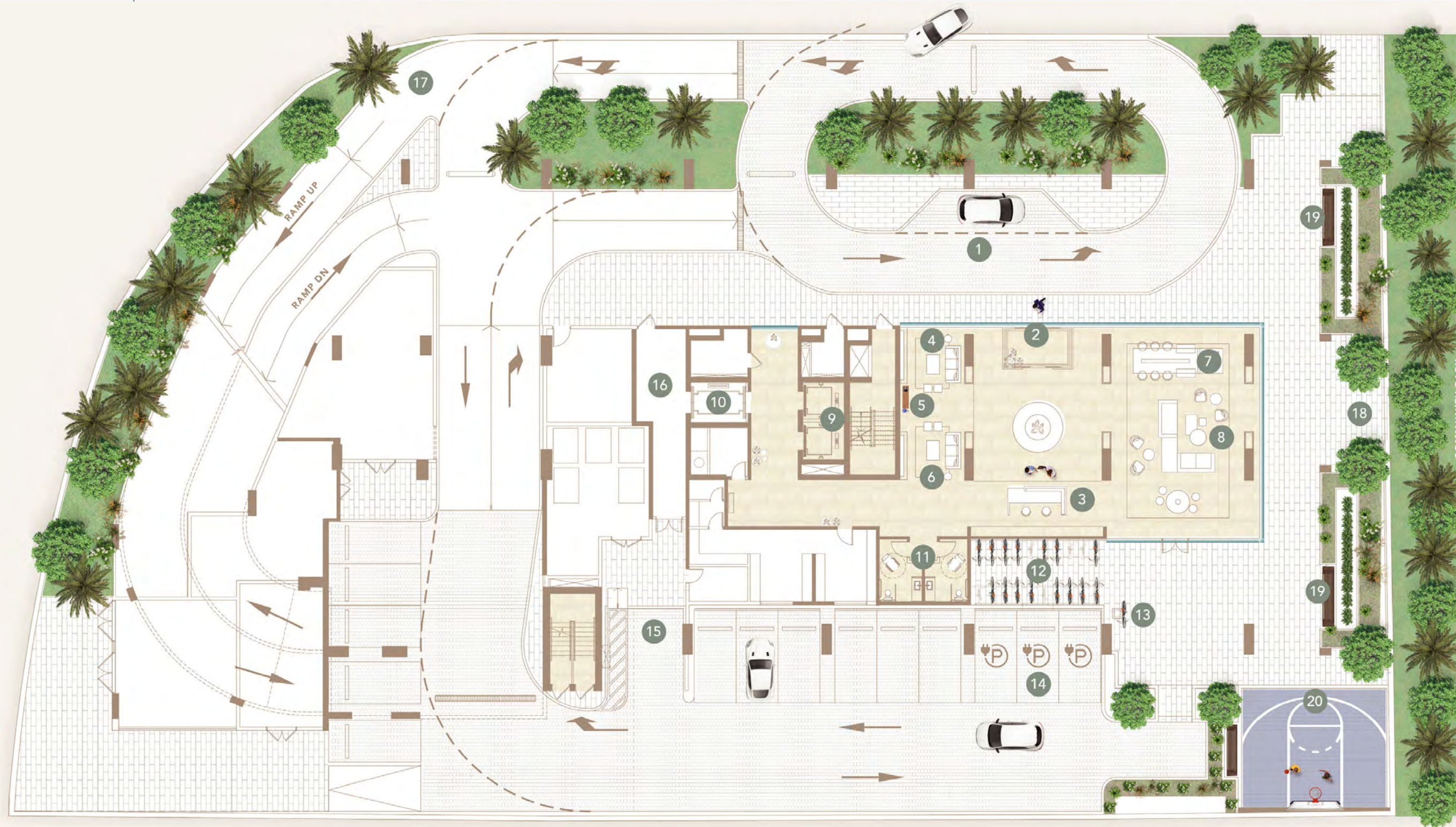
1 bedroom = 69 units

2 bedrooms = 46 units



# AMENITIES PLAN

## GROUND FLOOR



- 1 Drop-off Area
- 2 Lobby Entrance
- 3 Lobby Reception
- 4 Family & Kids Seating Area
- 5 Coffee Station
- 6 Reading Area
- 7 Lobby Workstation
- 8 Lobby Lounge Area
- 9 Lifts
- 10 Double-sided Service Lift
- 11 Restrooms
- 12 Bicycle Parking
- 13 Bicycle Maintenance Stand
- 14 EV Charging Stations
- 15 Move-in Truck Parking
- 16 Secured Loading Zone
- 17 Residents Parking Entrance
- 18 Access to Outdoor Leisure Park
- 19 Outdoor Seating Areas
- 20 Outdoor Urban Basketball Area

Scan to view  
the interactive  
amenities plan



# AMENITIES PLAN

## PODIUM LEVEL



- 1 Arcade Room
- 2 Outdoor Lounge Area
- 3 Table Tennis Area
- 4 Indoor Fitness Studio
- 5 Outdoor Fitness Area
- 6 Outdoor Yoga Deck
- 7 Male & Female Changing Rooms
- 8 Steam Shower & Sauna Rooms
- 9 Bathroom for People Determination
- 10 Outdoor Garden with Seating Areas
- 11 Lift Lobby

Scan to view  
the interactive  
amenities plan



# AMENITIES PLAN

## ROOFTOP



- 1 Pool Spa
- 2 Infinity Lap Pool
- 3 Leisure Lounge Pool
- 4 Baja Shelf
- 5 Pool Sun Loungers Area
- 6 Cabanas
- 7 Changing Rooms
- 8 Outdoor Shower Area
- 9 Lounge Area & Viewing Deck
- 10 Dining Area
- 11 Kitchen & BBQ Area
- 12 Lift Lobby

Scan to view  
the interactive  
amenities plan





SHAPING YOUR  
DREAM WORLD



HOTEL-STYLE LOBBY WITH LOUNGE,  
WORK AND LOUNGING AREAS



ARCADE ROOM  
WITH OUTDOOR SPACE



INDOOR AND OUTDOOR  
FITNESS STUDIO

ROOFTOP INFINITY POOL  
AND DECK WITH POOL SPA







ROOFTOP TERRACE WITH DINING,  
LOUNGE AND BBQ AREA



AN  
IDYLIC  
ESCAPE



STUDIO APARTMENT



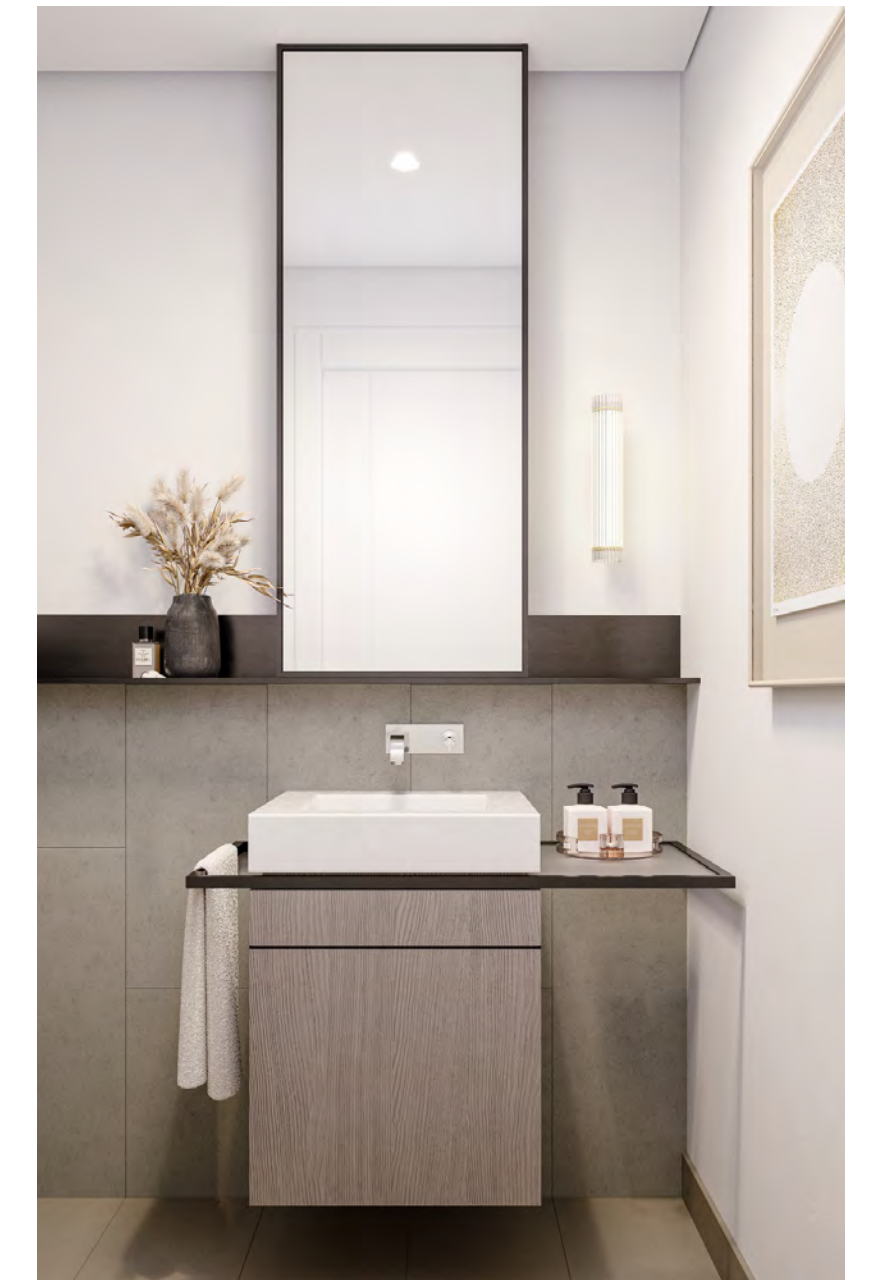
ELLINGTON SIGNATURE KITCHEN WITH  
INTEGRATED DINING TABLE



LIVING AND DINING AREA



BEDROOM



BATHROOM

# TYPICAL PLAN

## 1ST FLOOR

-  Studio
-  1 Bedroom Unit
-  2 Bedroom Unit





# TYPICAL PLAN

2ND - 11TH FLOOR

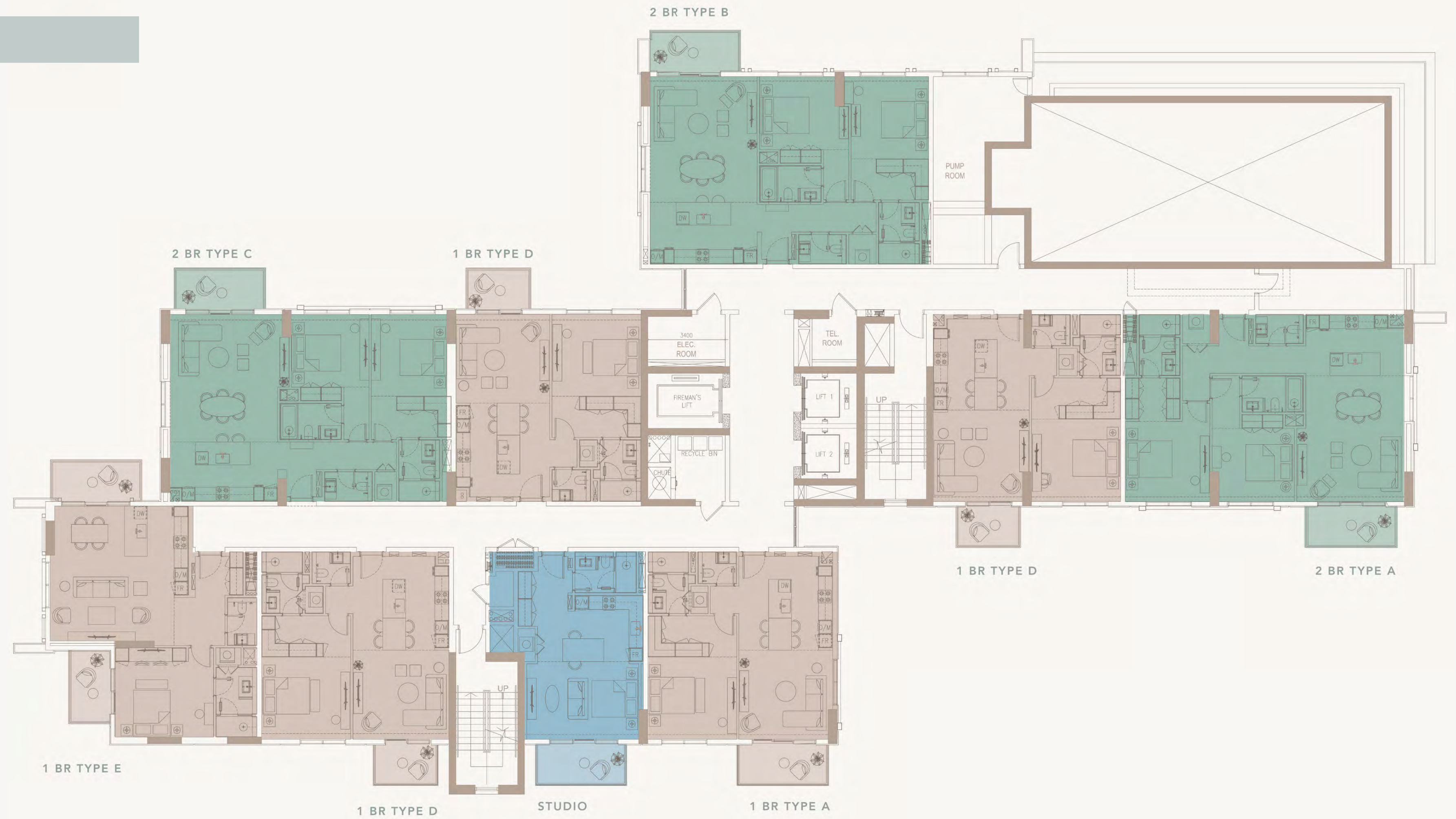
- Studio
- 1 Bedroom Unit
- 2 Bedroom Unit



# TYPICAL PLAN

## 12TH FLOOR

- Studio
- 1 Bedroom Unit
- 2 Bedroom Unit



# TYPICAL PLAN

## APARTMENTS



STUDIO



1 BEDROOM TYPE D



2 BEDROOM TYPE D

## PAYMENT PLAN

**20%**

At the time of booking

**5%**

60 days after  
the reservation date

**5%**

120 days after  
the reservation date

**5%**

On completion of 20%  
construction of the project

**5%**

On completion of 30%  
construction of the project

**5%**

On completion of 40%  
construction of the project

**5%**

On completion of 50%  
construction of the project

**50%**

On completion



LIVE IN *DESIGN*

For more information

please call / WhatsApp Trupti Nair on 00971 507851492

Email: [trupti@homeloungeuae.com](mailto:trupti@homeloungeuae.com)