

DUBAI CREEK

HARBOUR



CREEK HORIZON



A CITY OF ENDLESS
POSSIBILITIES

مدينة الاحتمالات
اللامتناهية



CREEK HORIZON



A CULTURAL PEARL OF THE GULF

A global hub on the rise, where East meets West and ambition meets opportunity, Dubai brings the world together to live, work and play.

Dubai is a city of firsts, making the impossible a reality every day, constantly expanding the boundaries of human ingenuity to bring new environments and experiences to its citizens, residents and visitors.

Home to the world's tallest tower and largest shopping mall, a ski resort in the desert, and man-made islands that sprawl into the azure Arabian Gulf, Dubai's vision and innovative spirit serve as a beacon for the region and an inspiration to the world.

درة الخليج

دبي، المركز العالمي الصاعد نجمه في الآفاق، حيث يلتقي الشرق بالغرب والطموح بالفرص. هي المدينة التي يجتمع بها العالم للحياة والعمل والترفيه.

دبي، المدينة التي حطمت الأرقام القياسية والتي تجعل من المستحيل حقيقة واقعة تعيشها كل يوم، تعمل باستمرار على التوسع في حدود الإبداع الإنساني لتقديم بيئات وتجارب جديدة لمواطنيها، والمقيمين بها، وزائريها.

تضم دبي أطول مبنى في العالم، وأضخم مركز تسوق ومنتجع للتزلج في الصحراء، والجزر الصناعية التي تمتد عبر الخليج العربي، وتعد رؤيتها وروحها الابتكارية منارة تضيء المنطقة ونبع إلهام للعالم بأسره.

BUILDING THE FOUNDATION OF OUR FUTURE

A global property developer, Emaar Properties is the driving force behind many of the iconic projects that have come to define Dubai on the world stage, including Burj Khalifa, The Dubai Mall, The Dubai Fountain and Downtown Dubai, its flagship development.

The pioneer of large-scale integrated communities in Dubai, Emaar has evolved into the hospitality, leisure and retail sectors, launching exciting brands and projects that transform landscapes and lifestyles across the Emirate and beyond.

Established in Dubai almost 20 years ago, Emaar has now taken its capabilities to the world, with stunning developments extending beyond the Middle East to North Africa, the US, Europe and South Asia.

شركة إعمار العقارية

لطالما كانت إعمار العقارية، شركة التطوير العقاري العالمية، القوة الدافعة وراء الكثير من المشروعات الشهيرة التي أمنت لدي مكانتها على الصعيد العالمي، بما في ذلك برج خليفة، ودي مول، ودي فاوتن، ووسط مدينة دبي الذي يعد مشروعها الرئيسي.

تطورت إعمار، الشركة الرائدة للمجمعات المتكاملة واسعة النطاق في دبي، لتشمل قطاعات الضيافة والترفيه، والبيع بالتجزئة، وأطلقت علامات تجارية ومشروعات مميزة أحدثت تحولاً في شكل وأنماط الحياة في كافة أنحاء الإمارة وخارجها.

والآن وبعد حوالي ٢٠ عاماً منذ تأسيسها في دبي، انتقلت إعمار بإمكاناتها إلى مستوى عالمي، حيث تتولى مشروعات مذهلة تخطى الشرق الأوسط إلى شمال إفريقيا، والولايات المتحدة الأمريكية، وأوروبا، وجنوب آسيا.





WHERE THE WORLD WANTS TO LIVE

Set along the historic and always lively Dubai Creek, Dubai Creek Harbour is a sprawling city-within-a-city that will bring the traditional heart of Dubai into the 21st century.

Encircling The Tower at Dubai Creek Harbour, which is set to once again transform the Dubai skyline, the mixed-use smart city consists of nine distinctive districts. Connected by an integrated transport system, each district brings its own flavour and features that combine to form an exciting environment without equal in the region.

Physically and philosophically bound to Ras Al Khor Wildlife Sanctuary, Dubai Creek Harbour is an ecologically responsible development with a deep commitment to sustainability and biodiversity for the benefit of Dubai's people – today and for generations to come.

المكان الذي يرغبه العالم

بعد مشروع خور دبي متراحي الأطراف الممتد على طول خور دبي التاريخي، بمثابة مدينة داخل مدينة تستحضر قلب مدينة دبي بأجوائها التقليدية إلى القرن الـ 21.

أقيم برج خور دبي ليشكل معلماً آخر في آفاق دبي، وتحيط به المدينة الذكية متعددة الاستخدامات التي تتألف من تسع مناطق تتصل ببعضها بنظام نقل متكامل، وتجلب كل منطقة أجوائها ومعالها المتميزة التي تجتمع لتشكل بيئة مشوقة لا مثيل لها في المنطقة.

ويرتبط مشروع خور دبي مادياً بمحمية رأس الخور للحياة البرية، كما يتشارك معها في فلسفتها، لأنه مشروع مسؤول بيئياً شديد الالتزام بالاستدامة والتنوع الحيوي الذي يعود بالنفع على شعب دبي اليوم وللأجيال القادمة.

A THRIVING WATERFRONT COMMUNITY

A sanctuary of sophisticated living, the Island District combines upmarket residences with alluring leisure and recreational facilities to create a world-class waterfront community. Residents will soak up the spectacular views along the twinkling promenade and share memorable moments at the district's lush central park, magnificent marina, yacht club and five-star hotels.

مجمع مزدهر على الواجهة المائية

تجمع منطقة الجزيرة بين أماكن الإقامة الفاخرة ومنشآت الترفيه والتسليّة الجذابة لتشكل مجعاً سكنياً عالمياً الطراز على الواجهة المائية يعد ملاذاً للحياة الراقية، سيستمتع المقيمون بالمنطقة بمشاهدتها الخلابة على طول المتنزه المتلألئ، وسيشاركون في لحظات تدوم معهم إلى الأبد في الحديقة المركزية الوارفة، والمرسى المذهل، ونادي اليخوت والفنادق من فئة خمس نجوم التي تضمها المنطقة.





THE LIFE YOU'VE ALWAYS DREAMED OF

Comprising nine interconnected districts, each community includes luxury villas, residential towers featuring apartments and serviced apartments, and open spaces clustered around schools, cultural complexes, recreational and retail facilities. Here, your every need is catered for and more.

With each district offering its own idiosyncratic lifestyle, you really can choose your own little piece of paradise. So whether you're a family looking for a nurturing environment in which to bring up your children, or a young professional in search of a dynamic creative scene, you'll find your dream home here.

الحياة التي طالما حلمت بها

هنا في هذا المشروع، تتخطى المزايا مجرد تلبية الاحتياجات، حيث يتألف من تسعة أحياء، كل مجمع منها يضم فيلات فاخرة، وأبراجاً سكنية تضم شققاً وشققاً فندقية، ومساحات مفتوحة تتمركز حول المدارس، والمجمعات الثقافية، والمنشآت الترفيهية والتجارية.

وبتفرد أسلوب الحياة الذي تقدمه كل منطقة، أصبح اختيار ملاذك الصغير من النعيم أمراً رهن إشارتك، لذا، سواء كنتم عائلة تبحث عن بيئة مناسبة لتربية أطفالكم، أو كنتم شباباً عملياً يبحثون عن مشهد إبداعي مفعم بالحياة، فإن منزل الأحلام بانتظاركم هنا.

CREEK
تصاميم داخلية راقية

HORIZON





THE PEAK OF VIBRANT URBAN LIVING

Creek Horizon's two sleek towers take stylish modern living to new heights. Centrally located adjacent to the central park of the Island District, the towers enjoy prime position over the district's marina, perfectly framing Burj Khalifa and Downtown Dubai on the horizon. Creek Horizon offers the finest facilities and a wealth of attractive amenities to craft a lifestyle of extraordinary comfort and convenience.

قمة الحياة الحضرية النابضة

يرتقي كريك هورايزن بالحياة العصرية الأنيقة إلى مستويات جديدة. ومع موقعهما المركزي المجاور للحديقة المركزية لمنطقة الجزيرة، يتمتع البرجان بموقع مثالي يطل على مرسى المنطقة، ويشكلان إطاراً مثالياً لبرج خليفة ووسط مدينة دبي في الأفق. ويتوفر أفخر المنشآت والكثير من وسائل الراحة الجذابة، فإن الحياة في كريك هورايزن تصاغ ببراعة لتحقيق أقصى درجات الراحة والرفاهية.

FIND YOURSELF WHERE LIFE HAPPENS

Step out of Creek Horizon and discover a flourishing waterfront hotspot, where Dubai's past and future effortlessly intertwine in a fabulous feast for the senses. An endless array of stylish boutiques, quaint cafés and delightful dining concepts await, creating an unmatched environment of luxe and leisure.

تمتع بالحياة على طريقك

تدعوك الواجهة المائية المشوقة المتألقة خارج كريك هورايزن للاستكشافها. حيث يمتزج ماضي دبي بمستقبلها بالسياسية في تجربة ممتعة للحواس، تكمّلها مجموعة لامتناهية من المتاجر الأنيقة، والمقاهي المتميزة وأماكن تناول الأطباق الفاخرة التي تنتظرك لترتادها في أجواء تجمع ما بين الفخامة والرفاهية.





RISE ABOVE THE ORDINARY

Soaring elegantly over verdant parks and sparkling waterways, Creek Horizon's towers offer remarkable vistas from each of the over 40 storeys to create memories that last a lifetime. With over 500 contemporary apartments of various sizes, and an assortment of exclusive townhouses on the podium that connects the two towers, Creek Horizon offers elevated experiences of exceptional style.

الاستثنائية في أبهى صورها

يرتفع برجاً كريك هورايزن بأناقة فوق الحدائق الوارفة والممرات المائية المتلألئة، ويقدمان إطلالات أخاذة من جميع الطوابق التي تتخطى ٤٠ طابقاً، لتصنع ذكريات تدوم معك إلى الأبد. ومن خلال أكثر من ٥٠٠ شقة عصرية بمساحات مختلفة، ومجموعة متنوعة من منازل التاون هاوس الحصرية على المنصة التي تربط ما بين البرجين، فإن كريك هورايزون تقدم تجارباً رفيعة المستوى بنمط استثنائي.

EXPERIENCE LIFE AS IT SHOULD BE

Designed from the ground up to ensure an active and inclusive community lifestyle, every element of Creek Horizon has been carefully considered. A sprawling outdoor swimming pool is set amidst lush greenery to refresh and unite residents, while private indoor amenities include a relaxation lounge, a multi-purpose room, a games room, and a children's play area.

الحياة كما يجب أن تكون

ما بين المنشآت الخارجية التي تتضمن حمام سباحة خارجي مترامي الأطراف وسط مساحات خضراء ضُمَّم ليُجتمع حوله المقيمون لتجديد نشاطهم، والمنشآت الداخلية التي تتضمن صالة للاستجمام، وغرفة متعددة الأغراض، وغرفة ألعاب، ومنطقة مخصصة للعب الأطفال، فقد صُمم كل عنصر من كريك هورايزن بعناية لضمان نمط حياة مجتمعي نشط يشمل الجميع.





LIVE IN THE AIR

To live at Creek Horizon is to walk on air. At the Observation Deck, you'll be able to take in unparalleled views of Dubai Creek. Combined with stunning vista's of the Burj Khalifa and Dubai's iconic city line, the Observation Deck will prove to be the ultimate rendezvous point for those who seek new perspectives and a new outlook on life

الحياة في السماء

العيش في كريك هورايزن هو كالسير على الهواء. في منصة المراقبة، يمكنك ان تتمتع بمناظر لا مثيل لها من خور دبي ومشاهد مذهلة من برج خليفة وأفق مدينة دبي الشهير. مراقبة سطح كريك هورايزون نقطة الالتقاء في نهاية المطاف لأولئك الذين يسعون وجهات نظر جديدة ونظرة جديدة للحياة.

EXQUISITE

تصاميم داخلية راقية

INTERIORS

BRING A SPECTACULAR LIFESTYLE INTO FOCUS

Designed to deliver the pinnacle of Dubai living, all Creek Horizon apartments and townhouses feature outstanding finishing, and large windows and balconies that melt away the barriers between indoor living environments and the spectacular vistas that lie beyond. The perfect home for any lifestyle awaits, with a wide range of apartments sizes and layouts to suit every need.

Come home to Creek Horizon, a vibrant vision of urban waterfront living.

أسلوب حياتك الرائع المميز في بؤرة الاهتمام

صممت جميع شقق ومنازل كريك هورايزن لتجسد الحياة في دبي في أوج فخامتها، حيث تتميز بتشطيباتها الفاخرة، ونوافذها وشرفاتها الضخمة التي تزيل المسافات ما بين بيئات المعيشة الداخلية والآفاق المذهلة خارجها. ويتوفر مجموعة واسعة من الشقق بالمساحات والتصميمات التي تلبي جميع الاحتياجات، فإن شقتك المثالية بأسلوب الحياة الذي تفضله في انتظارك.

استمتع بالإقامة في كريك هورايزن، رؤية حية للحياة الحضرية المطلّة على واجهة مائية.









FLOOR

PLANS

TOWER ONE

DUBAI CREEK

HARBOUR

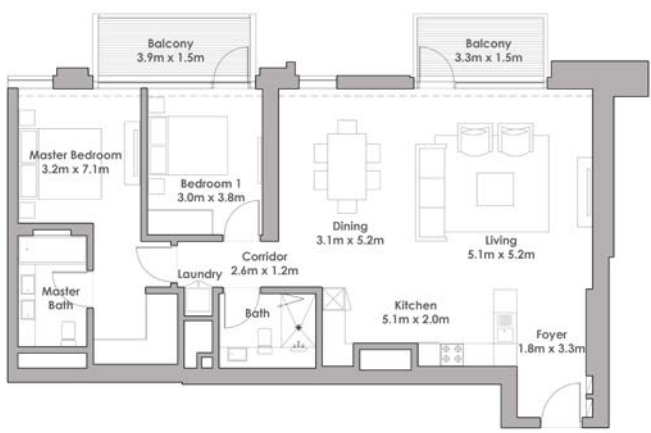


TOWER 2
4 BEDROOM W/ TERRACE
UNIT 01-06 / LEVEL 1-2

Suite Area	2355 Sq.ft. / 218.74 Sq.m.
Balcony Area	655 Sq.ft. / 60.83 Sq.m.
Total Area	3010 Sq.ft. / 297.57 Sq.m.

DUBAI CREEK

HARBOUR



TOWER 1
2 BEDROOM W/ TERRACE
UNIT 02 / LEVEL 35-36

Suite Area	1237 Sq.ft. / 114.89 Sq.m.
Balcony Area	139 Sq.ft. / 12.91 Sq.m.
Total Area	1367 Sq.ft. / 127.8 Sq.m.



1. All dimensions are in imperial and metric, and measured to structural elements and exclude wall finishes and construction tolerances. 2. All materials, dimensions, and drawings are approximate only. 3. Information is subject to change without notice, at developer's absolute discretion. 4. Actual area may vary from the stated area. 5. Drawings not to scale. 6. All images used are for illustrative purposes only and do not represent the actual size, features, specifications, fittings, and furnishings. 7. The developer reserves the right to make revisions/alterations, at its absolute discretion, without any liability whatsoever.



1. All dimensions are in imperial and metric, and measured to structural elements and exclude wall finishes and construction tolerances. 2. All materials, dimensions, and drawings are approximate only. 3. Information is subject to change without notice, at developer's absolute discretion. 4. Actual area may vary from the stated area. 5. Drawings not to scale. 6. All images used are for illustrative purposes only and do not represent the actual size, features, specifications, fittings, and furnishings. 7. The developer reserves the right to make revisions/alterations, at its absolute discretion, without any liability whatsoever.



DUBAI CREEK

HARBOUR



TOWER 1
3 BEDROOM W/ TERRACE
UNIT 01 / LEVEL 35-36

Suite Area	2022 Sq.ft. / 187.85 Sq.m.
Balcony Area	152 Sq.ft. / 14.13 Sq.m.
Total Area	2174 Sq.ft. / 201.98 Sq.m.

DUBAI CREEK

HARBOUR



TOWER 1
4 BEDROOM W/ TERRACE
UNIT 03 / LEVEL 35-36

Suite Area	2587 Sq.ft. / 240.33 Sq.m.
Balcony Area	383 Sq.ft. / 35.57 Sq.m.
Total Area	2970 Sq.ft. / 275.9 Sq.m.



1. All dimensions are in imperial and metric, and measured to structural elements and exclude wall finishes and construction tolerances. 2. All materials, dimensions, and drawings are approximate only. 3. Information is subject to change without notice, at developer's absolute discretion. 4. Actual area may vary from the stated area. 5. Drawings not to scale. 6. All images used are for illustrative purposes only and do not represent the actual size, features, specifications, fittings, and furnishings. 7. The developer reserves the right to make revisions/alterations, at its absolute discretion, without any liability whatsoever.



1. All dimensions are in imperial and metric, and measured to structural elements and exclude wall finishes and construction tolerances. 2. All materials, dimensions, and drawings are approximate only. 3. Information is subject to change without notice, at developer's absolute discretion. 4. Actual area may vary from the stated area. 5. Drawings not to scale. 6. All images used are for illustrative purposes only and do not represent the actual size, features, specifications, fittings, and furnishings. 7. The developer reserves the right to make revisions/alterations, at its absolute discretion, without any liability whatsoever.

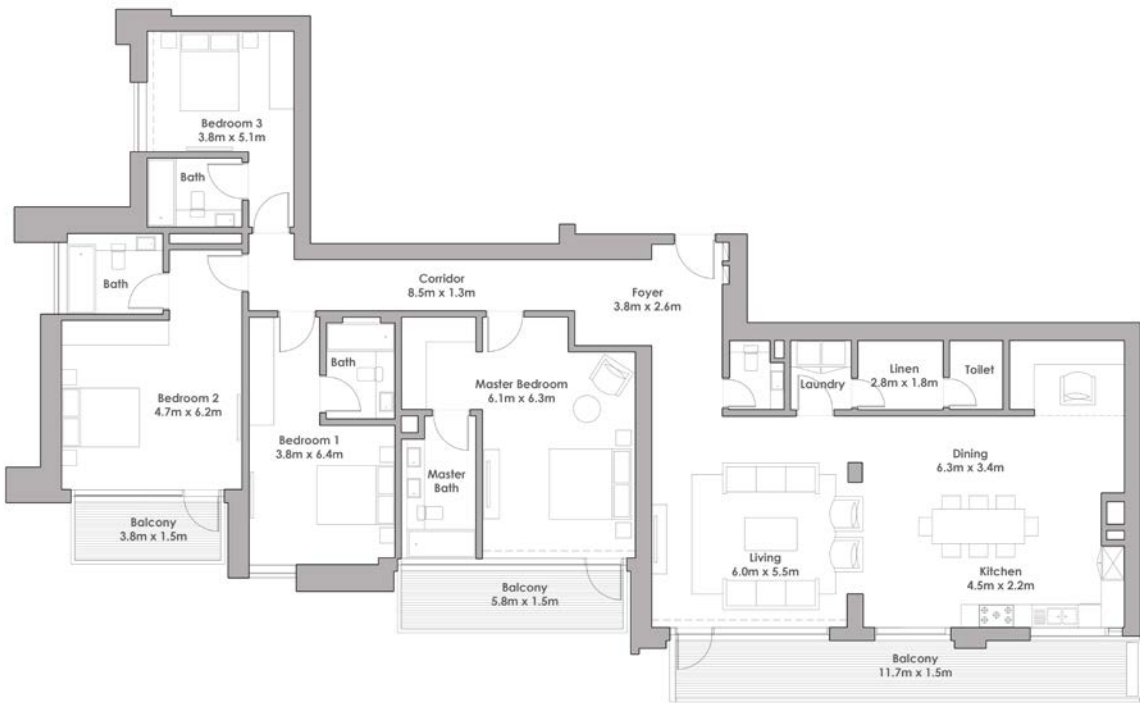


DUBAI CREEK

HARBOUR

DUBAI CREEK

HARBOUR



TOWER 1
4 BEDROOM W/ TERRACE
UNIT 04/ LEVEL 35-36

Suite Area	2653 Sq.ft. / 246.49 Sq.m.
Balcony Area	401 Sq.ft. / 37.23 Sq.m.
Total Area	3054 Sq.ft. / 283.72 Sq.m.



TOWER 1
1 BEDROOM W/ TERRACE
UNIT 01/ LEVEL P02

Suite Area	706 Sq.ft. / 65.59 Sq.m.
Balcony Area	76 Sq.ft. / 7.07 Sq.m.
Total Area	782 Sq.ft. / 72.66 Sq.m.



1. All dimensions are in imperial and metric, and measured to structural elements and exclude wall finishes and construction tolerances. 2. All materials, dimensions, and drawings are approximate only. 3. Information is subject to change without notice, at developer's absolute discretion. 4. Actual area may vary from the stated area. 5. Drawings not to scale. 6. All images used are for illustrative purposes only and do not represent the actual size, features, specifications, fittings, and furnishings. 7. The developer reserves the right to make revisions/alterations, at its absolute discretion, without any liability whatsoever.



1. All dimensions are in imperial and metric, and measured to structural elements and exclude wall finishes and construction tolerances. 2. All materials, dimensions, and drawings are approximate only. 3. Information is subject to change without notice, at developer's absolute discretion. 4. Actual area may vary from the stated area. 5. Drawings not to scale. 6. All images used are for illustrative purposes only and do not represent the actual size, features, specifications, fittings, and furnishings. 7. The developer reserves the right to make revisions/alterations, at its absolute discretion, without any liability whatsoever.



DUBAI CREEK

HARBOUR



TOWER 1
1 BEDROOM W/ TERRACE
UNIT 02/ LEVEL P02

Suite Area	707 Sq.ft. / 65.66 Sq.m.
Balcony Area	76 Sq.ft. / 7.07 Sq.m.
Total Area	783 Sq.ft. / 72.23 Sq.m.

DUBAI CREEK

HARBOUR



TOWER 1
1 BEDROOM W/ TERRACE
UNIT 03/ LEVEL P02

Suite Area	659 Sq.ft. / 64.59 Sq.m.
Balcony Area	63 Sq.ft. / 5.84 Sq.m.
Total Area	758 Sq.ft. / 70.38 Sq.m.



1. All dimensions are in imperial and metric, and measured to structural elements and exclude wall finishes and construction tolerances. 2. All materials, dimensions, and drawings are approximate only. 3. Information is subject to change without notice, at developer's absolute discretion. 4. Actual area may vary from the stated area. 5. Drawings not to scale. 6. All images used are for illustrative purposes only and do not represent the actual size, features, specifications, fittings, and furnishings. 7. The developer reserves the right to make revisions/alterations, at its absolute discretion, without any liability whatsoever.



1. All dimensions are in imperial and metric, and measured to structural elements and exclude wall finishes and construction tolerances. 2. All materials, dimensions, and drawings are approximate only. 3. Information is subject to change without notice, at developer's absolute discretion. 4. Actual area may vary from the stated area. 5. Drawings not to scale. 6. All images used are for illustrative purposes only and do not represent the actual size, features, specifications, fittings, and furnishings. 7. The developer reserves the right to make revisions/alterations, at its absolute discretion, without any liability whatsoever.

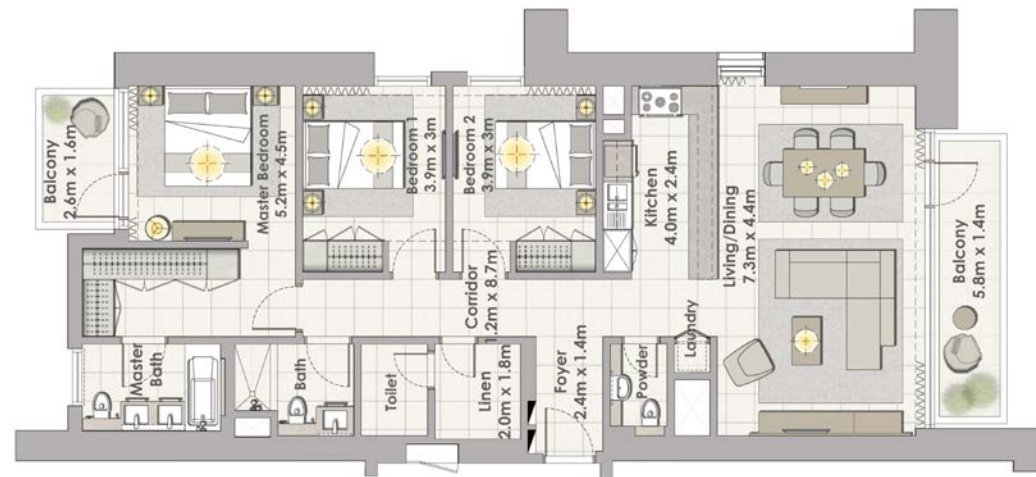


DUBAI CREEK

HARBOUR

DUBAI CREEK

HARBOUR



TOWER 1
3 BEDROOM W/ TERRACE
UNIT 04/ LEVEL P02

Suite Area	1463 Sq.ft. / 135.94 Sq.m.
Balcony Area	162 Sq.ft. / 15.09 Sq.m.
Total Area	1626 Sq.ft. / 151.03 Sq.m.



TOWER 1
1 BEDROOM W/ TERRACE
UNIT 01/ LEVEL P03

Suite Area	706 Sq.ft. / 65.59 Sq.m.
Balcony Area	76 Sq.ft. / 7.07 Sq.m.
Total Area	782 Sq.ft. / 72.66 Sq.m.



1. All dimensions are in imperial and metric, and measured to structural elements and exclude wall finishes and construction tolerances. 2. All materials, dimensions, and drawings are approximate only. 3. Information is subject to change without notice, at developer's absolute discretion. 4. Actual area may vary from the stated area. 5. Drawings not to scale. 6. All images used are for illustrative purposes only and do not represent the actual size, features, specifications, fittings, and furnishings. 7. The developer reserves the right to make revisions/alterations, at its absolute discretion, without any liability whatsoever.



1. All dimensions are in imperial and metric, and measured to structural elements and exclude wall finishes and construction tolerances. 2. All materials, dimensions, and drawings are approximate only. 3. Information is subject to change without notice, at developer's absolute discretion. 4. Actual area may vary from the stated area. 5. Drawings not to scale. 6. All images used are for illustrative purposes only and do not represent the actual size, features, specifications, fittings, and furnishings. 7. The developer reserves the right to make revisions/alterations, at its absolute discretion, without any liability whatsoever.



DUBAI CREEK

HARBOUR



TOWER 1
1 BEDROOM W/ TERRACE
UNIT 02/ LEVEL P03

Suite Area	707 Sq.ft. / 65.66 Sq.m.
Balcony Area	76 Sq.ft. / 7.07 Sq.m.
Total Area	783 Sq.ft. / 72.73 Sq.m.

DUBAI CREEK

HARBOUR



TOWER 1
1 BEDROOM W/ TERRACE
UNIT 03/ LEVEL P03

Suite Area	695 Sq.ft. / 64.54 Sq.m.
Balcony Area	63 Sq.ft. / 5.84 Sq.m.
Total Area	758 Sq.ft. / 70.38 Sq.m.



1. All dimensions are in imperial and metric, and measured to structural elements and exclude wall finishes and construction tolerances. 2. All materials, dimensions, and drawings are approximate only. 3. Information is subject to change without notice, at developer's absolute discretion. 4. Actual area may vary from the stated area. 5. Drawings not to scale. 6. All images used are for illustrative purposes only and do not represent the actual size, features, specifications, fittings, and furnishings. 7. The developer reserves the right to make revisions/alterations, at its absolute discretion, without any liability whatsoever.



1. All dimensions are in imperial and metric, and measured to structural elements and exclude wall finishes and construction tolerances. 2. All materials, dimensions, and drawings are approximate only. 3. Information is subject to change without notice, at developer's absolute discretion. 4. Actual area may vary from the stated area. 5. Drawings not to scale. 6. All images used are for illustrative purposes only and do not represent the actual size, features, specifications, fittings, and furnishings. 7. The developer reserves the right to make revisions/alterations, at its absolute discretion, without any liability whatsoever.

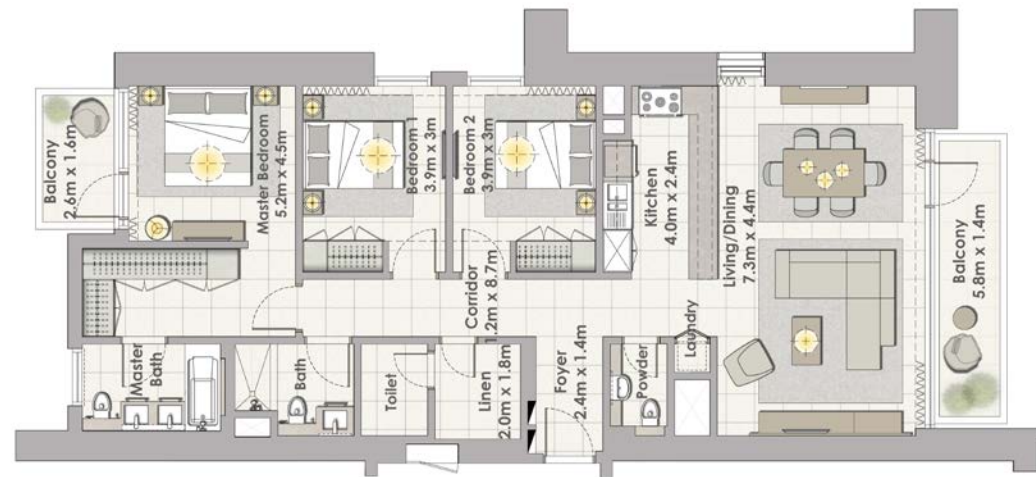


DUBAI CREEK

HARBOUR

DUBAI CREEK

HARBOUR



TOWER 1

3 BEDROOM W/ TERRACE

UNIT 04/ LEVEL P03

Suite Area	1463 Sq.ft. / 135.94 Sq.m.
Balcony Area	162 Sq.ft. / 15.09 Sq.m.
Total Area	1626 Sq.ft. / 151.03 Sq.m.

TOWER 1

1 BEDROOM W/ TERRACE

UNIT 04/ LEVEL 2-17

Suite Area	706 Sq.ft. / 65.59 Sq.m.
Balcony Area	76 Sq.ft. / 7.07 Sq.m.
Total Area	782 Sq.ft. / 72.66 Sq.m.



1. All dimensions are in imperial and metric, and measured to structural elements and exclude wall finishes and construction tolerances. 2. All materials, dimensions, and drawings are approximate only. 3. Information is subject to change without notice, at developer's absolute discretion. 4. Actual area may vary from the stated area. 5. Drawings not to scale. 6. All images used are for illustrative purposes only and do not represent the actual size, features, specifications, fittings, and furnishings. 7. The developer reserves the right to make revisions/alterations, at its absolute discretion, without any liability whatsoever.

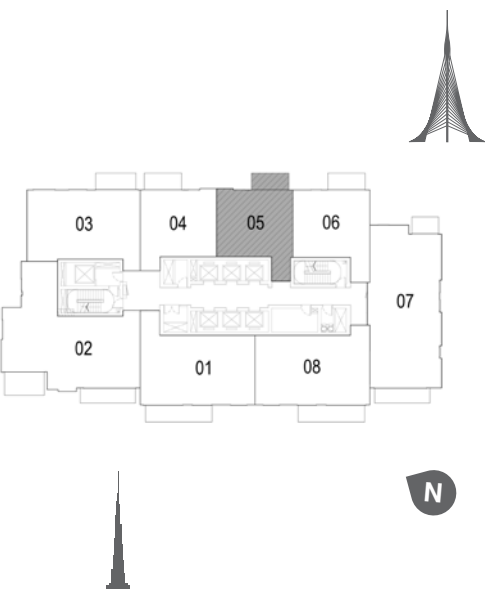


1. All dimensions are in imperial and metric, and measured to structural elements and exclude wall finishes and construction tolerances. 2. All materials, dimensions, and drawings are approximate only. 3. Information is subject to change without notice, at developer's absolute discretion. 4. Actual area may vary from the stated area. 5. Drawings not to scale. 6. All images used are for illustrative purposes only and do not represent the actual size, features, specifications, fittings, and furnishings. 7. The developer reserves the right to make revisions/alterations, at its absolute discretion, without any liability whatsoever.



DUBAI CREEK

HARBOUR

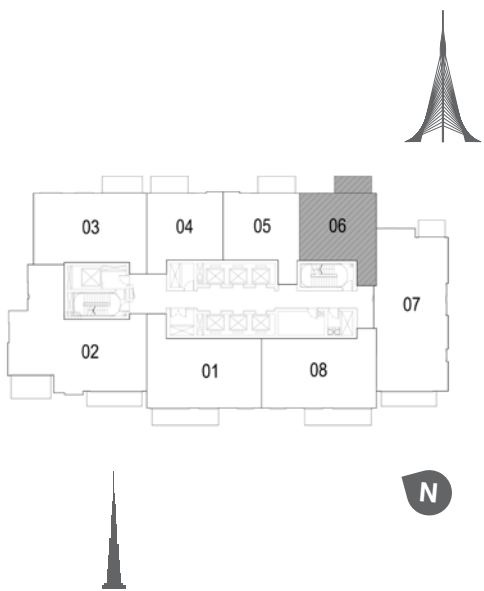


TOWER 1
1 BEDROOM W/ TERRACE
UNIT 05/ LEVEL 2-17

Suite Area	707 Sq.ft. / 65.66 Sq.m.
Balcony Area	76 Sq.ft. / 7.07 Sq.m.
Total Area	783 Sq.ft. / 72.73 Sq.m.

DUBAI CREEK

HARBOUR



TOWER 1
1 BEDROOM W/ TERRACE
UNIT 06/ LEVEL 2-17

Suite Area	695 Sq.ft. / 64.54 Sq.m.
Balcony Area	63 Sq.ft. / 5.84 Sq.m.
Total Area	758 Sq.ft. / 70.38 Sq.m.



1. All dimensions are in imperial and metric, and measured to structural elements and exclude wall finishes and construction tolerances. 2. All materials, dimensions, and drawings are approximate only. 3. Information is subject to change without notice, at developer's absolute discretion. 4. Actual area may vary from the stated area. 5. Drawings not to scale. 6. All images used are for illustrative purposes only and do not represent the actual size, features, specifications, fittings, and furnishings. 7. The developer reserves the right to make revisions/alterations, at its absolute discretion, without any liability whatsoever.



1. All dimensions are in imperial and metric, and measured to structural elements and exclude wall finishes and construction tolerances. 2. All materials, dimensions, and drawings are approximate only. 3. Information is subject to change without notice, at developer's absolute discretion. 4. Actual area may vary from the stated area. 5. Drawings not to scale. 6. All images used are for illustrative purposes only and do not represent the actual size, features, specifications, fittings, and furnishings. 7. The developer reserves the right to make revisions/alterations, at its absolute discretion, without any liability whatsoever.

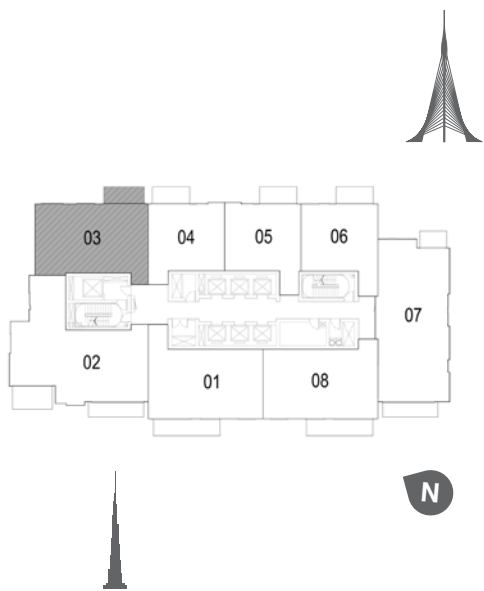
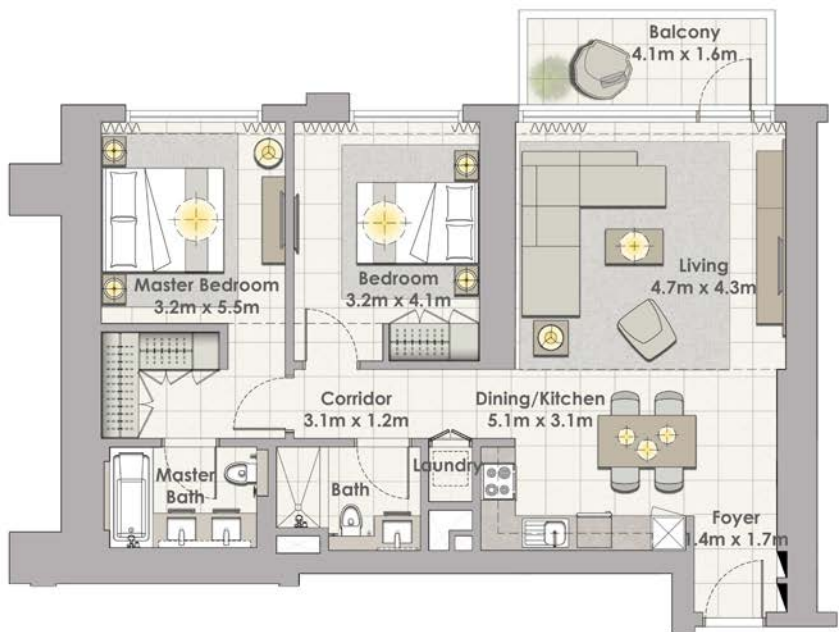
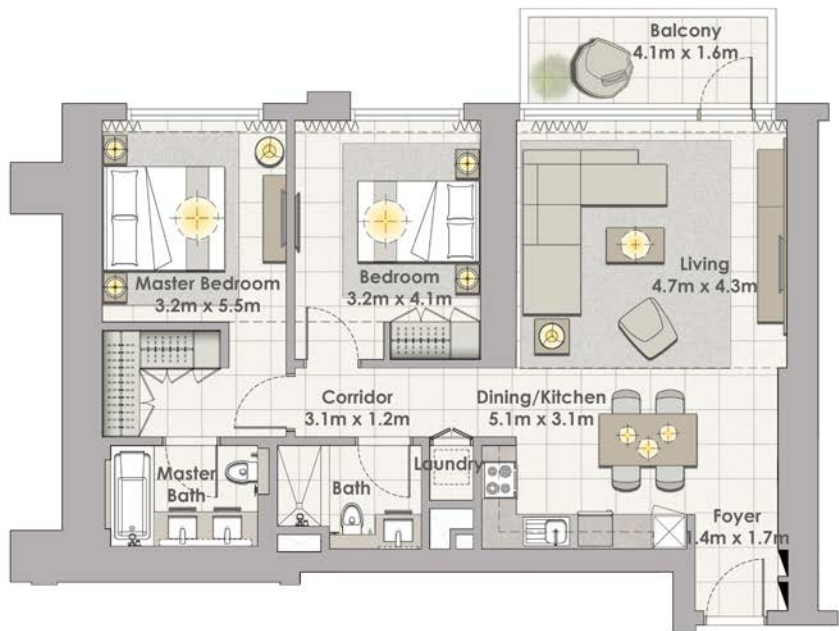


DUBAI CREEK

HARBOUR

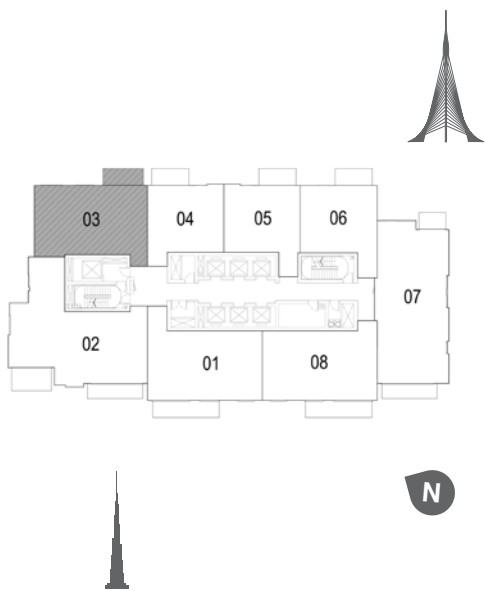
DUBAI CREEK

HARBOUR



TOWER 1
2 BEDROOM W/ TERRACE
UNIT 03/ LEVEL 2-17

Suite Area	1063 Sq.ft. / 98.76 Sq.m.
Balcony Area	76 Sq.ft. / 7.07 Sq.m.
Total Area	1139 Sq.ft. / 105.83 Sq.m.



TOWER 1
2 BEDROOM W/ TERRACE
UNIT 03/ LEVEL 2-17

Suite Area	1063 Sq.ft. / 98.76 Sq.m.
Balcony Area	76 Sq.ft. / 7.07 Sq.m.
Total Area	1139 Sq.ft. / 105.83 Sq.m.



1. All dimensions are in imperial and metric, and measured to structural elements and exclude wall finishes and construction tolerances. 2. All materials, dimensions, and drawings are approximate only. 3. Information is subject to change without notice, at developer's absolute discretion. 4. Actual area may vary from the stated area. 5. Drawings not to scale. 6. All images used are for illustrative purposes only and do not represent the actual size, features, specifications, fittings, and furnishings. 7. The developer reserves the right to make revisions/alterations, at its absolute discretion, without any liability whatsoever.



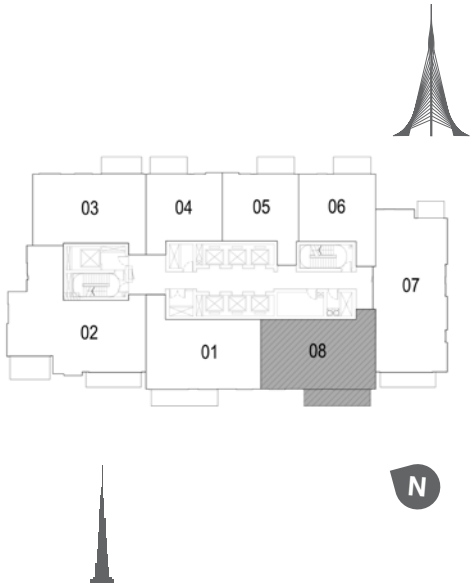
1. All dimensions are in imperial and metric, and measured to structural elements and exclude wall finishes and construction tolerances. 2. All materials, dimensions, and drawings are approximate only. 3. Information is subject to change without notice, at developer's absolute discretion. 4. Actual area may vary from the stated area. 5. Drawings not to scale. 6. All images used are for illustrative purposes only and do not represent the actual size, features, specifications, fittings, and furnishings. 7. The developer reserves the right to make revisions/alterations, at its absolute discretion, without any liability whatsoever.



2 BEDROOM W/ TERRACE
UNIT 08 / LEVEL 2-17

Suite Area 1075 Sq.ft. / 99.89 Sq.m.
Terrace Area 133 Sq.ft. / 12.31 Sq.m.
Total Area 1208 Sq.ft. / 112.20 Sq.m.

DUBAI CREEK
HARBOUR



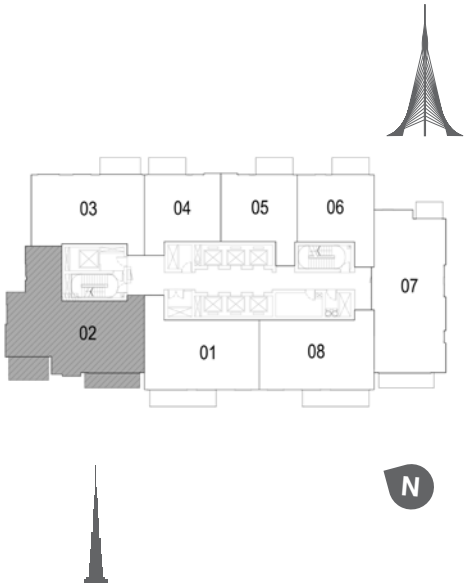
TOWER 1
2 BEDROOM W/ TERRACE
UNIT 08/ LEVEL 2-17

Suite Area	1075 Sq.ft. / 99.89 Sq.m.
Balcony Area	133 Sq.ft. / 12.32 Sq.m.
Total Area	1208 Sq.ft. / 112.20 Sq.m.

DUBAI CREEK
HARBOUR

3 BEDROOM W/ TERRACE
UNIT 02 / LEVEL 2-17

Suite Area 1515 Sq.ft. / 140.72 Sq.m.
Terrace Area 180 Sq.ft. / 16.75 Sq.m.
Total Area 1695 Sq.ft. / 157.47 Sq.m.



TOWER 1
3 BEDROOM W/ TERRACE
UNIT 02/ LEVEL 2-17

Suite Area	1515 Sq.ft. / 140.72 Sq.m.
Balcony Area	180 Sq.ft. / 16.75 Sq.m.
Total Area	1695 Sq.ft. / 157.47 Sq.m.



1. All dimensions are in imperial and metric, and measured to structural elements and exclude wall finishes and construction tolerances. 2. All materials, dimensions, and drawings are approximate only. 3. Information is subject to change without notice, at developer's absolute discretion. 4. Actual area may vary from the stated area. 5. Drawings not to scale. 6. All images used are for illustrative purposes only and do not represent the actual size, features, specifications, fittings, and furnishings. 7. The developer reserves the right to make revisions/alterations, at its absolute discretion, without any liability whatsoever.

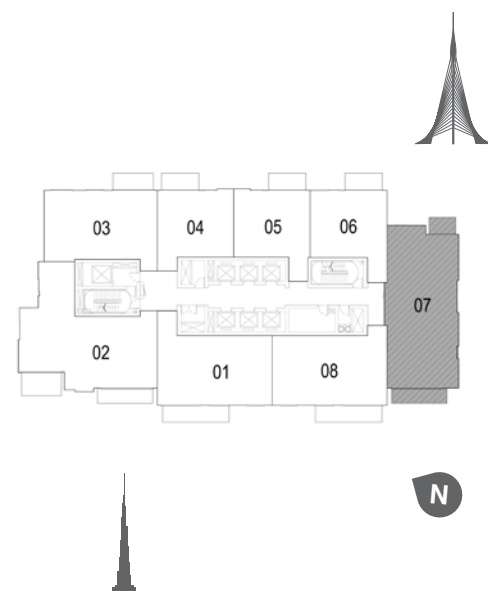
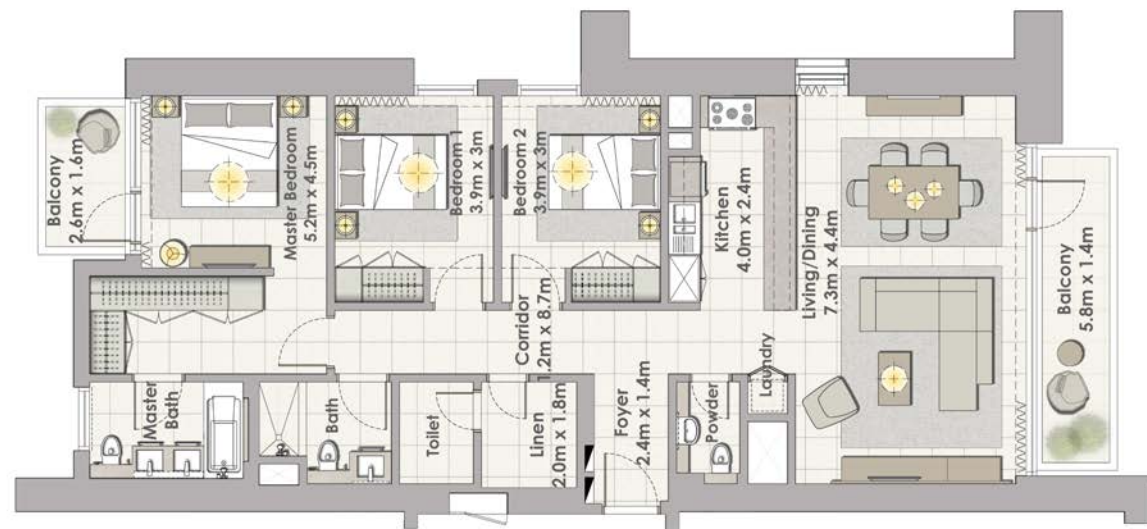


1. All dimensions are in imperial and metric, and measured to structural elements and exclude wall finishes and construction tolerances. 2. All materials, dimensions, and drawings are approximate only. 3. Information is subject to change without notice, at developer's absolute discretion. 4. Actual area may vary from the stated area. 5. Drawings not to scale. 6. All images used are for illustrative purposes only and do not represent the actual size, features, specifications, fittings, and furnishings. 7. The developer reserves the right to make revisions/alterations, at its absolute discretion, without any liability whatsoever.



DUBAI CREEK

HARBOUR



TOWER 1

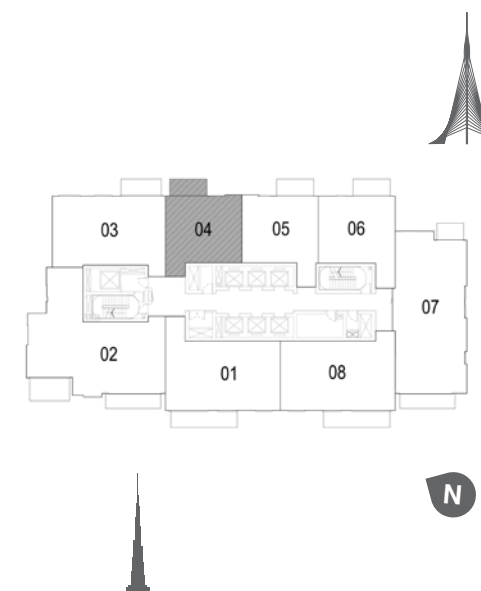
3 BEDROOM W/ TERRACE

UNIT 07/ LEVEL 2-17

Suite Area	1465 Sq.ft. / 136.13 Sq.m.
Balcony Area	162 Sq.ft. / 15.09 Sq.m.
Total Area	1627 Sq.ft. / 151.22 Sq.m.

DUBAI CREEK

HARBOUR



TOWER 1

1 BEDROOM W/ TERRACE

UNIT 04/ LEVEL 19-34

Suite Area	707 Sq.ft. / 65.68 Sq.m.
Balcony Area	76 Sq.ft. / 7.07 Sq.m.
Total Area	783 Sq.ft. / 72.75 Sq.m.



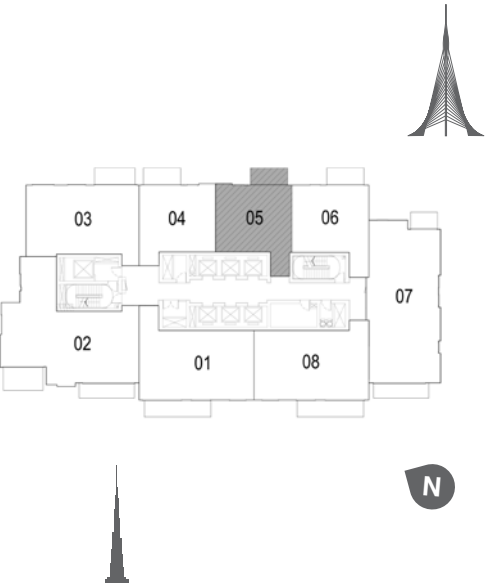
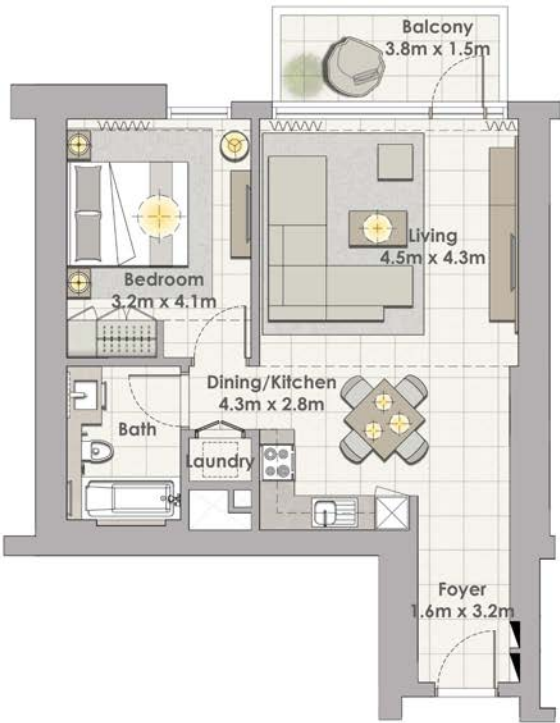
1. All dimensions are in imperial and metric, and measured to structural elements and exclude wall finishes and construction tolerances. 2. All materials, dimensions, and drawings are approximate only. 3. Information is subject to change without notice, at developer's absolute discretion. 4. Actual area may vary from the stated area. 5. Drawings not to scale. 6. All images used are for illustrative purposes only and do not represent the actual size, features, specifications, fittings, and furnishings. 7. The developer reserves the right to make revisions/alterations, at its absolute discretion, without any liability whatsoever.



1. All dimensions are in imperial and metric, and measured to structural elements and exclude wall finishes and construction tolerances. 2. All materials, dimensions, and drawings are approximate only. 3. Information is subject to change without notice, at developer's absolute discretion. 4. Actual area may vary from the stated area. 5. Drawings not to scale. 6. All images used are for illustrative purposes only and do not represent the actual size, features, specifications, fittings, and furnishings. 7. The developer reserves the right to make revisions/alterations, at its absolute discretion, without any liability whatsoever.



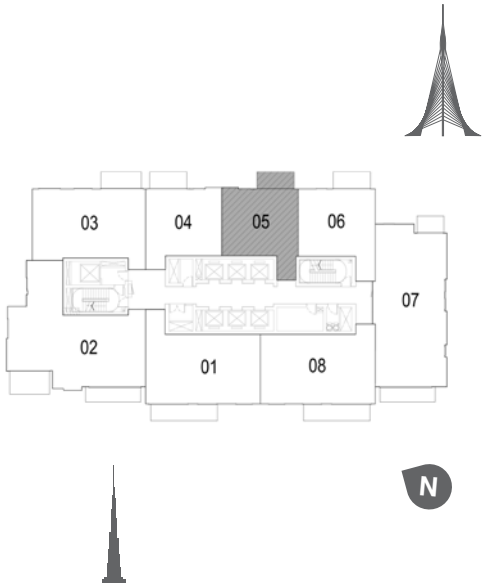
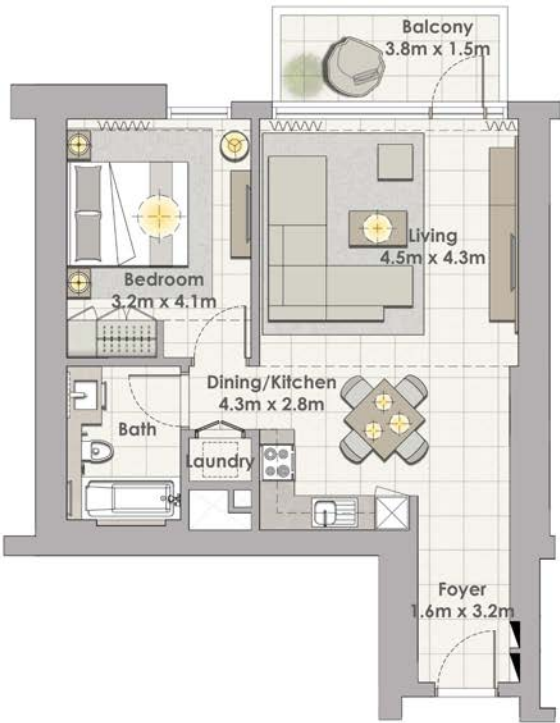
DUBAI CREEK
HARBOUR



TOWER 1
1 BEDROOM W/ TERRACE
UNIT 05/ LEVEL 19-34

Suite Area	707 Sq.ft. / 65.67 Sq.m.
Balcony Area	76 Sq.ft. / 7.07 Sq.m.
Total Area	783 Sq.ft. / 72.74 Sq.m.

DUBAI CREEK
HARBOUR



TOWER 1
1 BEDROOM W/ TERRACE
UNIT 05/ LEVEL 19-34

Suite Area	707 Sq.ft. / 65.67 Sq.m.
Balcony Area	76 Sq.ft. / 7.07 Sq.m.
Total Area	783 Sq.ft. / 72.74 Sq.m.



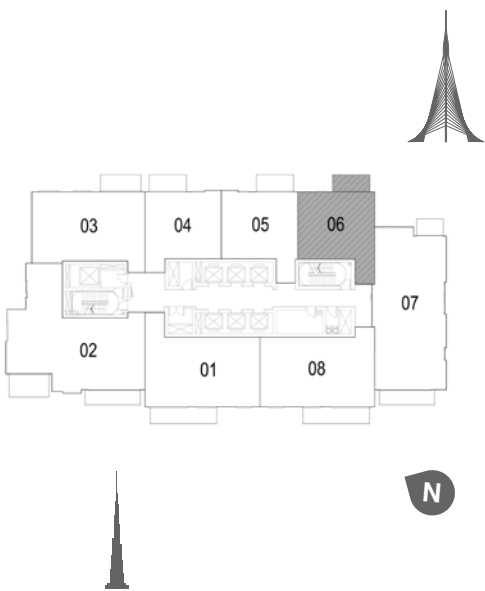
1. All dimensions are in imperial and metric, and measured to structural elements and exclude wall finishes and construction tolerances. 2. All materials, dimensions, and drawings are approximate only. 3. Information is subject to change without notice, at developer's absolute discretion. 4. Actual area may vary from the stated area. 5. Drawings not to scale. 6. All images used are for illustrative purposes only and do not represent the actual size, features, specifications, fittings, and furnishings. 7. The developer reserves the right to make revisions/alterations, at its absolute discretion, without any liability whatsoever.



1. All dimensions are in imperial and metric, and measured to structural elements and exclude wall finishes and construction tolerances. 2. All materials, dimensions, and drawings are approximate only. 3. Information is subject to change without notice, at developer's absolute discretion. 4. Actual area may vary from the stated area. 5. Drawings not to scale. 6. All images used are for illustrative purposes only and do not represent the actual size, features, specifications, fittings, and furnishings. 7. The developer reserves the right to make revisions/alterations, at its absolute discretion, without any liability whatsoever.



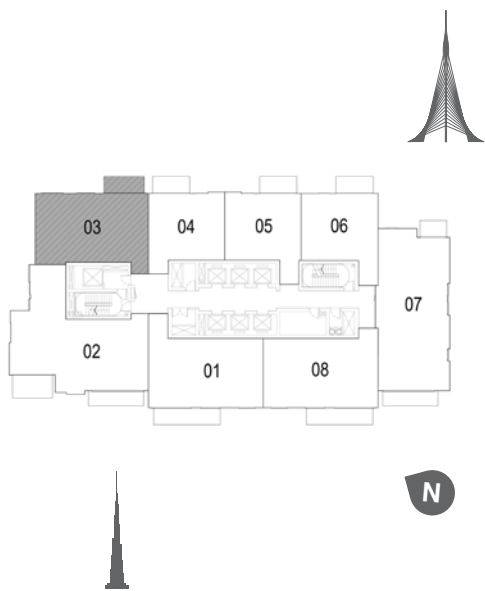
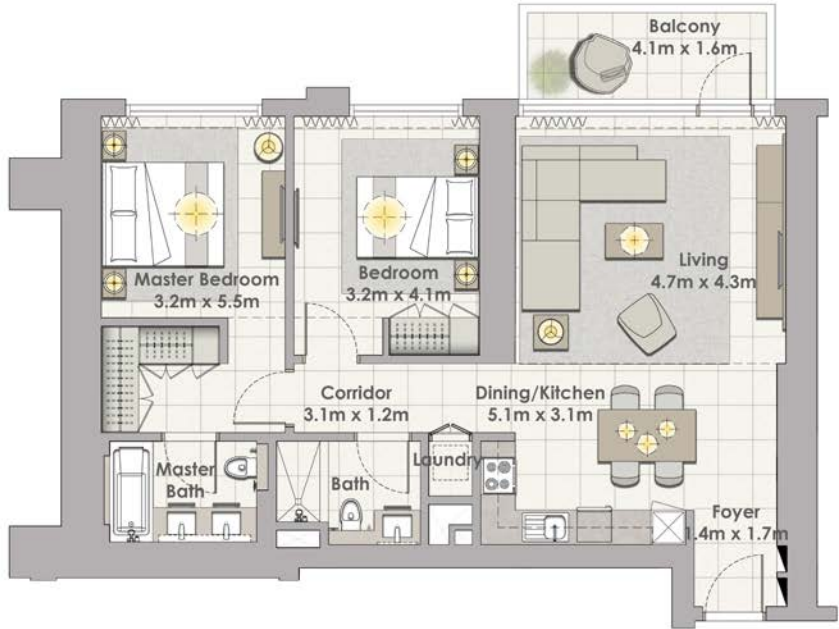
DUBAI CREEK
HARBOUR



TOWER 1
1 BEDROOM W/ TERRACE
UNIT 06/ LEVEL 19-34

Suite Area	708 Sq.ft. / 65.77 Sq.m.
Balcony Area	63 Sq.ft. / 5.84 Sq.m.
Total Area	771 Sq.ft. / 71.61 Sq.m.

DUBAI CREEK
HARBOUR



TOWER 1
2 BEDROOM W/ TERRACE
UNIT 03/ LEVEL 19-34

Suite Area	1060 Sq.ft. / 98.49 Sq.m.
Balcony Area	76 Sq.ft. / 7.07 Sq.m.
Total Area	1136 Sq.ft. / 105.56 Sq.m.



1. All dimensions are in imperial and metric, and measured to structural elements and exclude wall finishes and construction tolerances. 2. All materials, dimensions, and drawings are approximate only. 3. Information is subject to change without notice, at developer's absolute discretion. 4. Actual area may vary from the stated area. 5. Drawings not to scale. 6. All images used are for illustrative purposes only and do not represent the actual size, features, specifications, fittings, and furnishings. 7. The developer reserves the right to make revisions/alterations, at its absolute discretion, without any liability whatsoever.

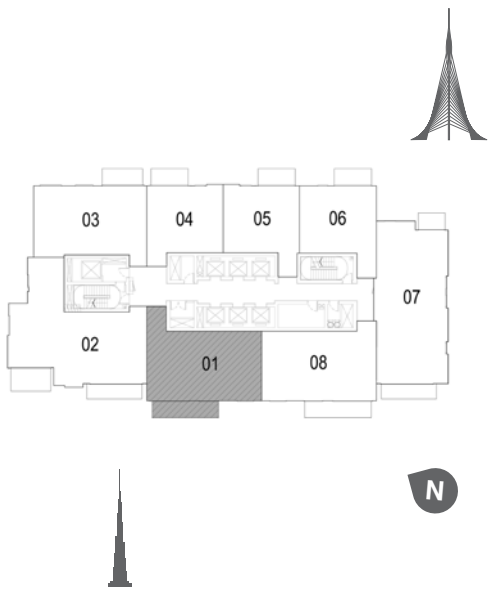


1. All dimensions are in imperial and metric, and measured to structural elements and exclude wall finishes and construction tolerances. 2. All materials, dimensions, and drawings are approximate only. 3. Information is subject to change without notice, at developer's absolute discretion. 4. Actual area may vary from the stated area. 5. Drawings not to scale. 6. All images used are for illustrative purposes only and do not represent the actual size, features, specifications, fittings, and furnishings. 7. The developer reserves the right to make revisions/alterations, at its absolute discretion, without any liability whatsoever.



DUBAI CREEK

HARBOUR

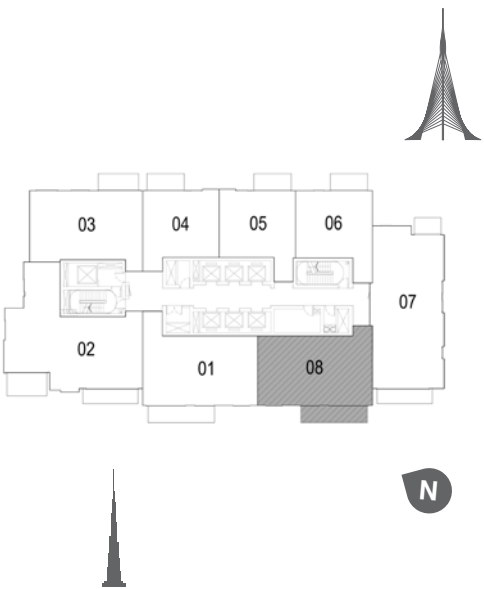


TOWER 1
2 BEDROOM W/ TERRACE
UNIT 01/ LEVEL 19-34

Suite Area	1120 Sq.ft. / 104.05 Sq.m.
Balcony Area	133 Sq.ft. / 12.31 Sq.m.
Total Area	1253 Sq.ft. / 116.36 Sq.m.

DUBAI CREEK

HARBOUR



TOWER 1
2 BEDROOM W/ TERRACE
UNIT 08 LEVEL 19-34

Suite Area	1062 Sq.ft. / 100.54 Sq.m.
Balcony Area	133 Sq.ft. / 12.31 Sq.m.
Total Area	1215 Sq.ft. / 112.85 Sq.m.



1. All dimensions are in imperial and metric, and measured to structural elements and exclude wall finishes and construction tolerances. 2. All materials, dimensions, and drawings are approximate only. 3. Information is subject to change without notice, at developer's absolute discretion. 4. Actual area may vary from the stated area. 5. Drawings not to scale. 6. All images used are for illustrative purposes only and do not represent the actual size, features, specifications, fittings, and furnishings. 7. The developer reserves the right to make revisions/alterations, at its absolute discretion, without any liability whatsoever.



1. All dimensions are in imperial and metric, and measured to structural elements and exclude wall finishes and construction tolerances. 2. All materials, dimensions, and drawings are approximate only. 3. Information is subject to change without notice, at developer's absolute discretion. 4. Actual area may vary from the stated area. 5. Drawings not to scale. 6. All images used are for illustrative purposes only and do not represent the actual size, features, specifications, fittings, and furnishings. 7. The developer reserves the right to make revisions/alterations, at its absolute discretion, without any liability whatsoever.



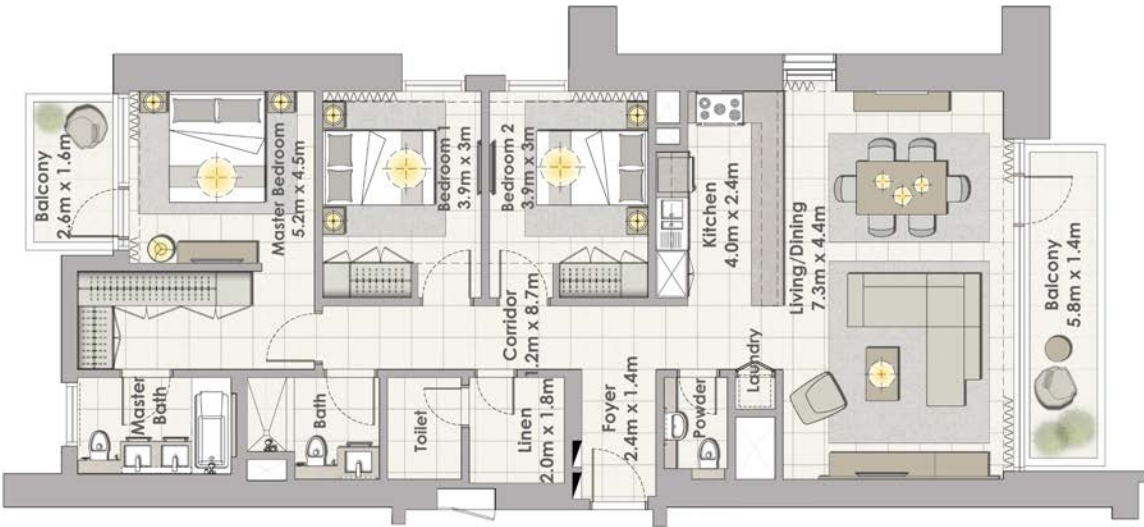
DUBAI CREEK
HARBOUR



TOWER 1
3 BEDROOM W/ TERRACE
UNIT 02/ LEVEL 19-34

Suite Area	1542 Sq.ft. / 141.54 Sq.m.
Balcony Area	180 Sq.ft. / 16.75 Sq.m.
Total Area	1704 Sq.ft. / 158.29 Sq.m.

DUBAI CREEK
HARBOUR



TOWER 1
3 BEDROOM W/ TERRACE
UNIT 07 LEVEL 19-34

Suite Area	1471 Sq.ft. / 136.65 Sq.m.
Balcony Area	162 Sq.ft. / 15.09 Sq.m.
Total Area	1633 Sq.ft. / 151.74 Sq.m.



1. All dimensions are in imperial and metric, and measured to structural elements and exclude wall finishes and construction tolerances. 2. All materials, dimensions, and drawings are approximate only. 3. Information is subject to change without notice, at developer's absolute discretion. 4. Actual area may vary from the stated area. 5. Drawings not to scale. 6. All images used are for illustrative purposes only and do not represent the actual size, features, specifications, fittings, and furnishings. 7. The developer reserves the right to make revisions/alterations, at its absolute discretion, without any liability whatsoever.



1. All dimensions are in imperial and metric, and measured to structural elements and exclude wall finishes and construction tolerances. 2. All materials, dimensions, and drawings are approximate only. 3. Information is subject to change without notice, at developer's absolute discretion. 4. Actual area may vary from the stated area. 5. Drawings not to scale. 6. All images used are for illustrative purposes only and do not represent the actual size, features, specifications, fittings, and furnishings. 7. The developer reserves the right to make revisions/alterations, at its absolute discretion, without any liability whatsoever.



FLOOR

PLANS

TOWER TWO

DUBAI CREEK

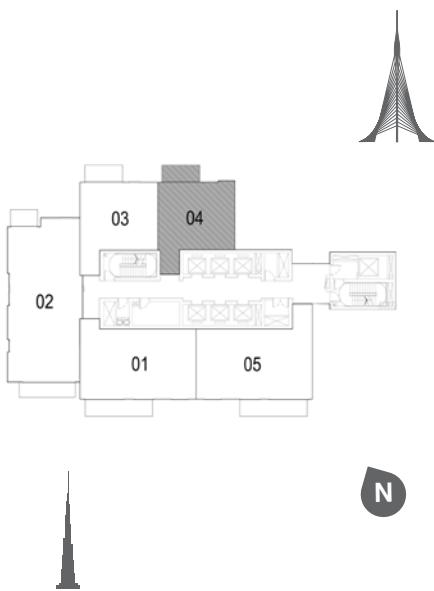
HARBOUR



1 BEDROOM W/ TERRACE UNIT 04 / LEVEL 1

Suite Area	707 Sq.ft. / 65.65 Sq.m.
Terrace Area	76 Sq.ft. / 7.07 Sq.m.
Total Area	783 Sq.ft. / 72.72 Sq.m.

Suite Area	707 Sq.ft. / 65.65 Sq.m.
Balcony Area	76 Sq.ft. / 7.07 Sq.m.
Total Area	783 Sq.ft. / 72.72 Sq.m.



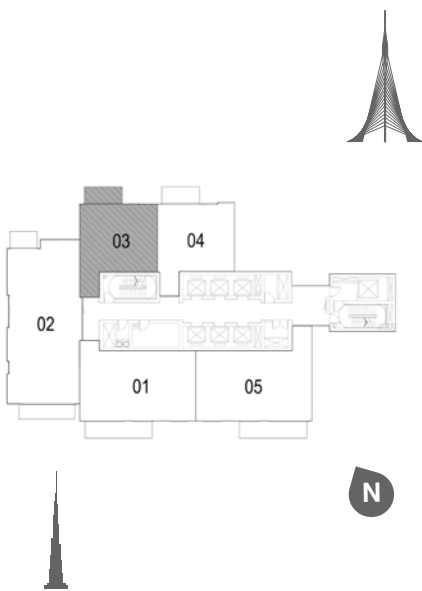
DUBAI CREEK

HARBOUR



TOWER 2 1 BEDROOM W/ TERRACE UNIT 03 / LEVEL 1

Suite Area	695 Sq.ft. / 64.54 Sq.m.
Balcony Area	63 Sq.ft. / 5.84 Sq.m.
Total Area	758 Sq.ft. / 70.38 Sq.m.



1. All dimensions are in imperial and metric, and measured to structural elements and exclude wall finishes and construction tolerances. 2. All materials, dimensions, and drawings are approximate only. 3. Information is subject to change without notice, at developer's absolute discretion. 4. Actual area may vary from the stated area. 5. Drawings not to scale. 6. All images used are for illustrative purposes only and do not represent the actual size, features, specifications, fittings, and furnishings. 7. The developer reserves the right to make revisions/alterations, at its absolute discretion, without any liability whatsoever.

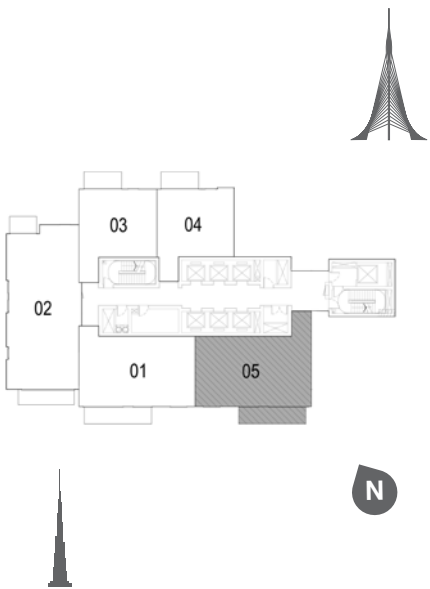


1. All dimensions are in imperial and metric, and measured to structural elements and exclude wall finishes and construction tolerances. 2. All materials, dimensions, and drawings are approximate only. 3. Information is subject to change without notice, at developer's absolute discretion. 4. Actual area may vary from the stated area. 5. Drawings not to scale. 6. All images used are for illustrative purposes only and do not represent the actual size, features, specifications, fittings, and furnishings. 7. The developer reserves the right to make revisions/alterations, at its absolute discretion, without any liability whatsoever.



DUBAI CREEK

HARBOUR

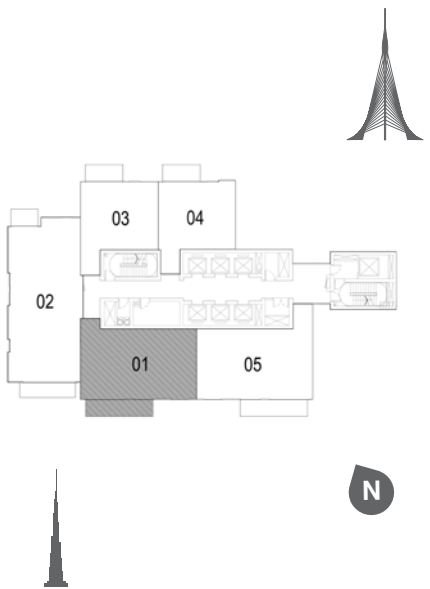


TOWER 2
2 BEDROOM W/ TERRACE
UNIT 05 / LEVEL 1

Suite Area	1112 Sq.ft. / 103.30 Sq.m.
Balcony Area	133 Sq.ft. / 12.31 Sq.m.
Total Area	1245 Sq.ft. / 115.61 Sq.m.

DUBAI CREEK

HARBOUR



TOWER 2
2 BEDROOM W/ TERRACE
UNIT 01 / LEVEL 1

Suite Area	1075 Sq.ft. / 99.89 Sq.m.
Balcony Area	133 Sq.ft. / 12.31 Sq.m.
Total Area	1208 Sq.ft. / 112.20 Sq.m.



1. All dimensions are in imperial and metric, and measured to structural elements and exclude wall finishes and construction tolerances. 2. All materials, dimensions, and drawings are approximate only. 3. Information is subject to change without notice, at developer's absolute discretion. 4. Actual area may vary from the stated area. 5. Drawings not to scale. 6. All images used are for illustrative purposes only and do not represent the actual size, features, specifications, fittings, and furnishings. 7. The developer reserves the right to make revisions/alterations, at its absolute discretion, without any liability whatsoever.

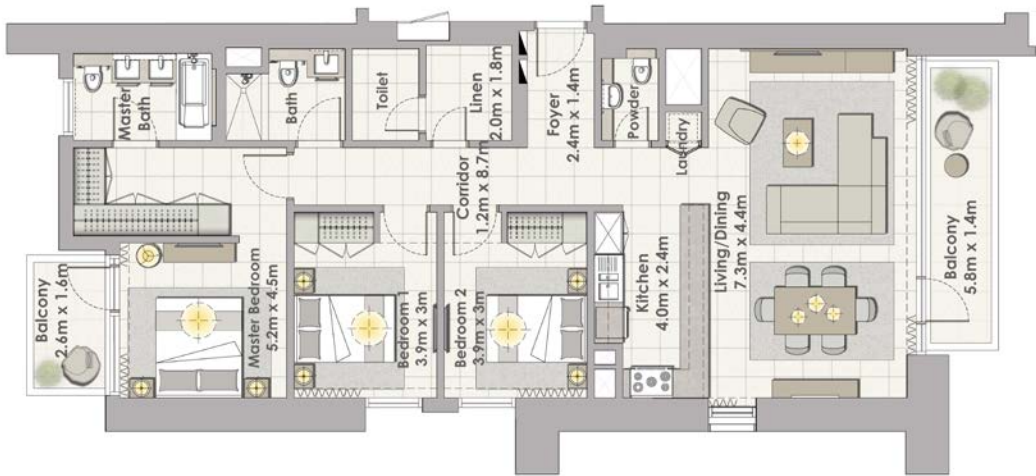


1. All dimensions are in imperial and metric, and measured to structural elements and exclude wall finishes and construction tolerances. 2. All materials, dimensions, and drawings are approximate only. 3. Information is subject to change without notice, at developer's absolute discretion. 4. Actual area may vary from the stated area. 5. Drawings not to scale. 6. All images used are for illustrative purposes only and do not represent the actual size, features, specifications, fittings, and furnishings. 7. The developer reserves the right to make revisions/alterations, at its absolute discretion, without any liability whatsoever.



DUBAI CREEK

HARBOUR

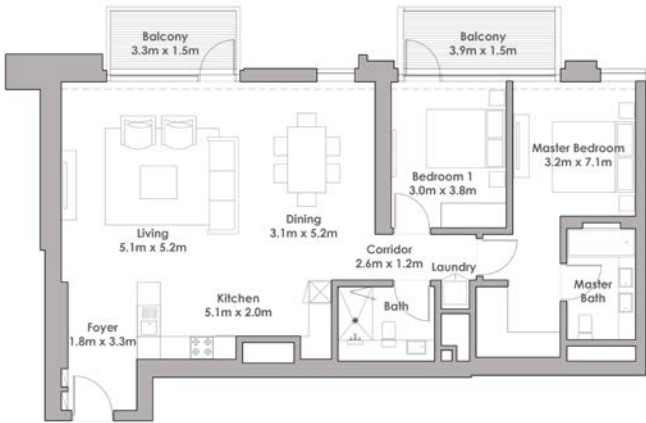


TOWER 2
3 BEDROOM W/ TERRACE
UNIT 02 / LEVEL 1

Suite Area	1463 Sq.ft. / 135.96 Sq.m.
Balcony Area	162 Sq.ft. / 15.09 Sq.m.
Total Area	1625 Sq.ft. / 151.05 Sq.m.

DUBAI CREEK

HARBOUR



TOWER 2
2 BEDROOM W/ TERRACE
UNIT 02 / LEVEL 29-30

Suite Area	1241 Sq.ft. / 115.32 Sq.m.
Balcony Area	139 Sq.ft. / 12.91 Sq.m.
Total Area	1380 Sq.ft. / 128.23 Sq.m.



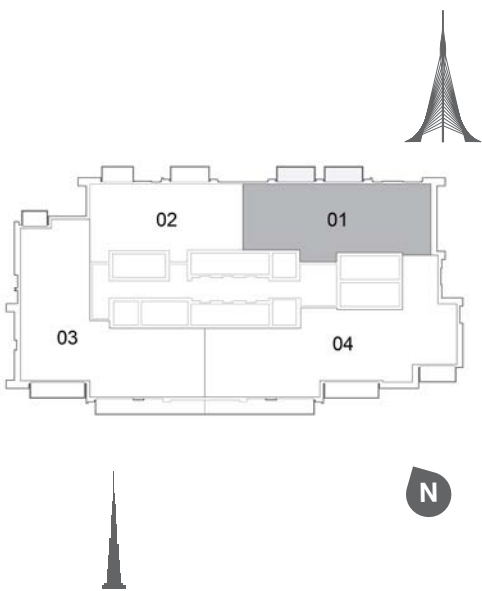
1. All dimensions are in imperial and metric, and measured to structural elements and exclude wall finishes and construction tolerances. 2. All materials, dimensions, and drawings are approximate only. 3. Information is subject to change without notice, at developer's absolute discretion. 4. Actual area may vary from the stated area. 5. Drawings not to scale. 6. All images used are for illustrative purposes only and do not represent the actual size, features, specifications, fittings, and furnishings. 7. The developer reserves the right to make revisions/alterations, at its absolute discretion, without any liability whatsoever.



1. All dimensions are in imperial and metric, and measured to structural elements and exclude wall finishes and construction tolerances. 2. All materials, dimensions, and drawings are approximate only. 3. Information is subject to change without notice, at developer's absolute discretion. 4. Actual area may vary from the stated area. 5. Drawings not to scale. 6. All images used are for illustrative purposes only and do not represent the actual size, features, specifications, fittings, and furnishings. 7. The developer reserves the right to make revisions/alterations, at its absolute discretion, without any liability whatsoever.



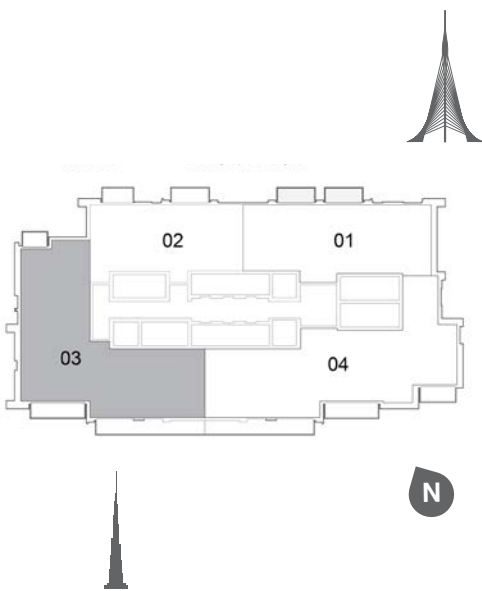
DUBAI CREEK
HARBOUR



TOWER 2
3 BEDROOM W/ TERRACE
UNIT 01 / LEVEL 29-30

Suite Area	2026 Sq.ft. / 188.24 Sq.m.
Balcony Area	152 Sq.ft. / 14.13 Sq.m.
Total Area	2178 Sq.ft. / 202.37 Sq.m.

DUBAI CREEK
HARBOUR



TOWER 2
4 BEDROOM W/ TERRACE
UNIT 03 / LEVEL 29-30

Suite Area	2585 Sq.ft. / 240.15 Sq.m.
Balcony Area	382 Sq.ft. / 35.45 Sq.m.
Total Area	2967 Sq.ft. / 275.6 Sq.m.



1. All dimensions are in imperial and metric, and measured to structural elements and exclude wall finishes and construction tolerances. 2. All materials, dimensions, and drawings are approximate only. 3. Information is subject to change without notice, at developer's absolute discretion. 4. Actual area may vary from the stated area. 5. Drawings not to scale. 6. All images used are for illustrative purposes only and do not represent the actual size, features, specifications, fittings, and furnishings. 7. The developer reserves the right to make revisions/alterations, at its absolute discretion, without any liability whatsoever.

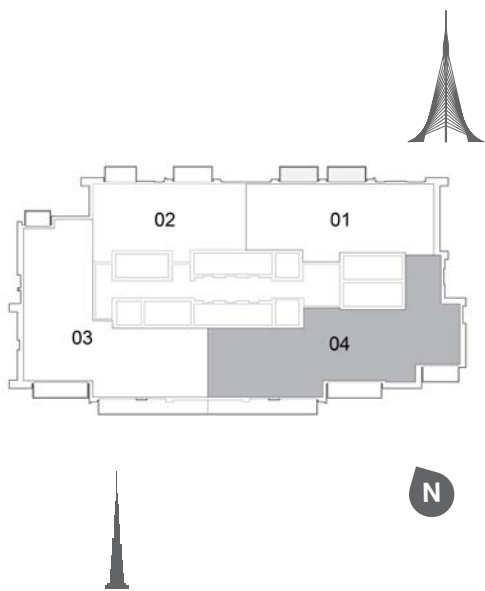
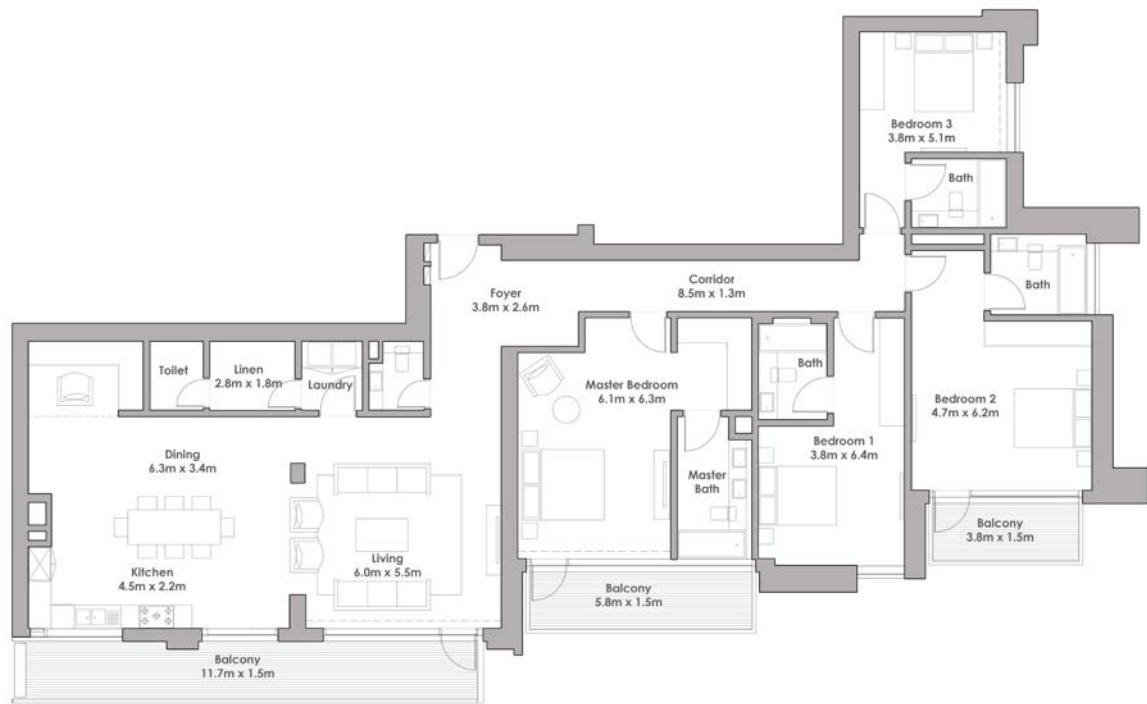


1. All dimensions are in imperial and metric, and measured to structural elements and exclude wall finishes and construction tolerances. 2. All materials, dimensions, and drawings are approximate only. 3. Information is subject to change without notice, at developer's absolute discretion. 4. Actual area may vary from the stated area. 5. Drawings not to scale. 6. All images used are for illustrative purposes only and do not represent the actual size, features, specifications, fittings, and furnishings. 7. The developer reserves the right to make revisions/alterations, at its absolute discretion, without any liability whatsoever.



DUBAI CREEK

HARBOUR

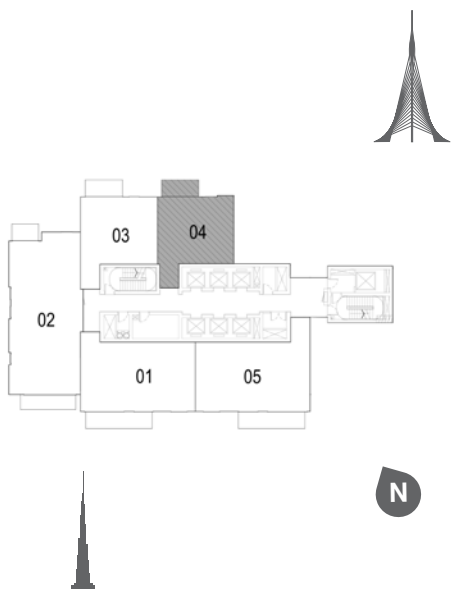


TOWER 2
4 BEDROOM W/ TERRACE
UNIT 04/ LEVEL 29-30

Suite Area	2647 Sq.ft. / 245.91 Sq.m.
Balcony Area	401 Sq.ft. / 37.23 Sq.m.
Total Area	3048 Sq.ft. / 283.23 Sq.m.

DUBAI CREEK

HARBOUR



TOWER 2
1 BEDROOM W/ TERRACE
UNIT 04/ LEVEL P02

Suite Area	707 Sq.ft. / 65.66 Sq.m.
Balcony Area	76 Sq.ft. / 7.07 Sq.m.
Total Area	783 Sq.ft. / 72.73 Sq.m.



1. All dimensions are in imperial and metric, and measured to structural elements and exclude wall finishes and construction tolerances. 2. All materials, dimensions, and drawings are approximate only. 3. Information is subject to change without notice, at developer's absolute discretion. 4. Actual area may vary from the stated area. 5. Drawings not to scale. 6. All images used are for illustrative purposes only and do not represent the actual size, features, specifications, fittings, and furnishings. 7. The developer reserves the right to make revisions/alterations, at its absolute discretion, without any liability whatsoever.



1. All dimensions are in imperial and metric, and measured to structural elements and exclude wall finishes and construction tolerances. 2. All materials, dimensions, and drawings are approximate only. 3. Information is subject to change without notice, at developer's absolute discretion. 4. Actual area may vary from the stated area. 5. Drawings not to scale. 6. All images used are for illustrative purposes only and do not represent the actual size, features, specifications, fittings, and furnishings. 7. The developer reserves the right to make revisions/alterations, at its absolute discretion, without any liability whatsoever.

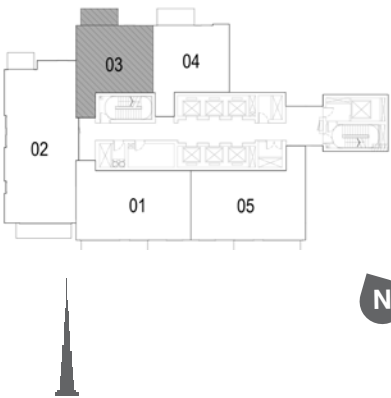


DUBAI CREEK

HARBOUR



TOWER 2
1 BEDROOM W/ TERRACE
UNIT 03 / LEVEL P02



Suite Area	695 Sq.ft. / 64.54 Sq.m.
Balcony Area	63 Sq.ft. / 5.84 Sq.m.
Total Area	758 Sq.ft. / 70.38 Sq.m.

DUBAI CREEK

HARBOUR



TOWER 2
2 BEDROOM W/ TERRACE
UNIT 05 / LEVEL P02



Suite Area	1113 Sq.ft. / 103.40 Sq.m.
Balcony Area	133 Sq.ft. / 12.31 Sq.m.
Total Area	1246 Sq.ft. / 115.7 Sq.m.



1. All dimensions are in imperial and metric, and measured to structural elements and exclude wall finishes and construction tolerances. 2. All materials, dimensions, and drawings are approximate only. 3. Information is subject to change without notice, at developer's absolute discretion. 4. Actual area may vary from the stated area. 5. Drawings not to scale. 6. All images used are for illustrative purposes only and do not represent the actual size, features, specifications, fittings, and furnishings. 7. The developer reserves the right to make revisions/alterations, at its absolute discretion, without any liability whatsoever.

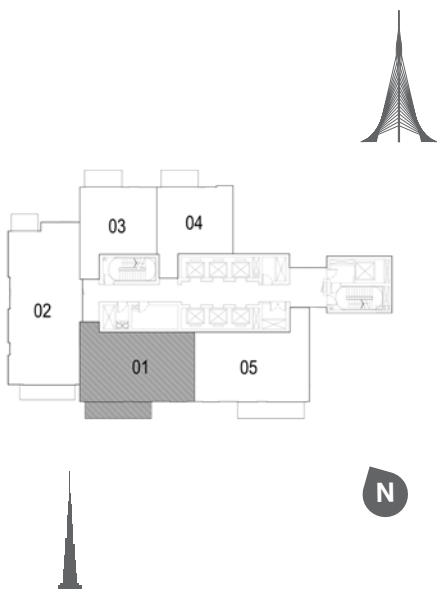
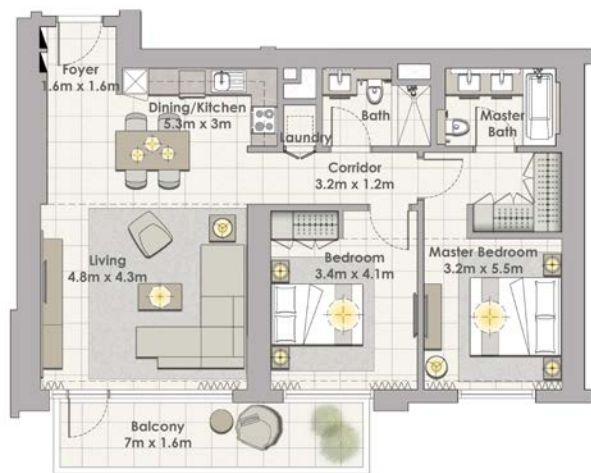


1. All dimensions are in imperial and metric, and measured to structural elements and exclude wall finishes and construction tolerances. 2. All materials, dimensions, and drawings are approximate only. 3. Information is subject to change without notice, at developer's absolute discretion. 4. Actual area may vary from the stated area. 5. Drawings not to scale. 6. All images used are for illustrative purposes only and do not represent the actual size, features, specifications, fittings, and furnishings. 7. The developer reserves the right to make revisions/alterations, at its absolute discretion, without any liability whatsoever.



DUBAI CREEK

HARBOUR

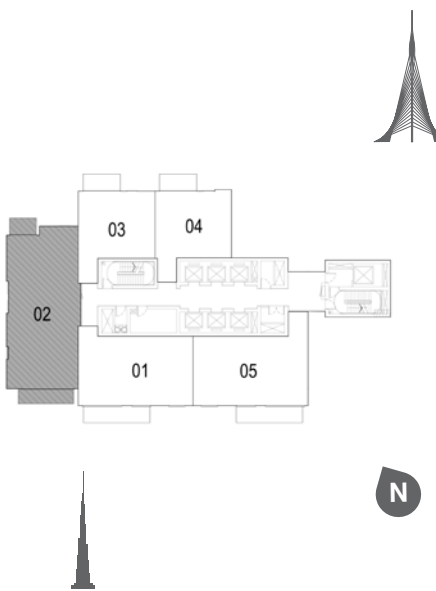
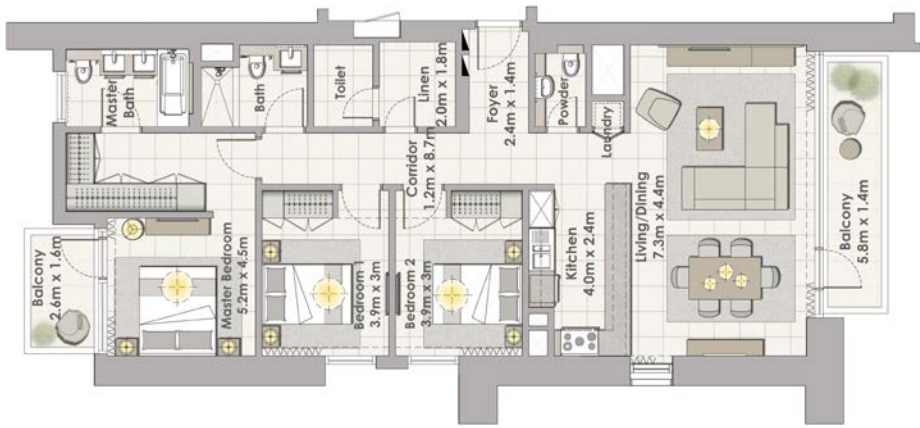


TOWER 2
2 BEDROOM W/ TERRACE
UNIT 01 / LEVEL P02

Suite Area	1074 Sq.ft. / 99.78 Sq.m.
Balcony Area	133 Sq.ft. / 12.31 Sq.m.
Total Area	1207 Sq.ft. / 112.09 Sq.m.

DUBAI CREEK

HARBOUR



TOWER 2
3 BEDROOM W/ TERRACE
UNIT 02 / LEVEL P02

Suite Area	1459 Sq.ft. / 135.51 Sq.m.
Balcony Area	162 Sq.ft. / 15.09 Sq.m.
Total Area	1621 Sq.ft. / 150.60 Sq.m.



1. All dimensions are in imperial and metric, and measured to structural elements and exclude wall finishes and construction tolerances. 2. All materials, dimensions, and drawings are approximate only. 3. Information is subject to change without notice, at developer's absolute discretion. 4. Actual area may vary from the stated area. 5. Drawings not to scale. 6. All images used are for illustrative purposes only and do not represent the actual size, features, specifications, fittings, and furnishings. 7. The developer reserves the right to make revisions/alterations, at its absolute discretion, without any liability whatsoever.



1. All dimensions are in imperial and metric, and measured to structural elements and exclude wall finishes and construction tolerances. 2. All materials, dimensions, and drawings are approximate only. 3. Information is subject to change without notice, at developer's absolute discretion. 4. Actual area may vary from the stated area. 5. Drawings not to scale. 6. All images used are for illustrative purposes only and do not represent the actual size, features, specifications, fittings, and furnishings. 7. The developer reserves the right to make revisions/alterations, at its absolute discretion, without any liability whatsoever.



DUBAI CREEK

HARBOUR



TOWER 2
2 BEDROOM W/ TERRACE
UNIT 01/ LEVEL P03

Suite Area	1065 Sq.ft. / 98.94 Sq.m.
Balcony Area	133 Sq.ft. / 12.31 Sq.m.
Total Area	1198 Sq.ft. / 111.25 Sq.m.

DUBAI CREEK

HARBOUR



TOWER 2
1 BEDROOM W/ TERRACE
UNIT 04 / LEVEL P03

Suite Area	722 Sq.ft. / 67.06 Sq.m.
Balcony Area	76 Sq.ft. / 7.07 Sq.m.
Total Area	798 Sq.ft. / 74.13 Sq.m.



1. All dimensions are in imperial and metric, and measured to structural elements and exclude wall finishes and construction tolerances. 2. All materials, dimensions, and drawings are approximate only. 3. Information is subject to change without notice, at developer's absolute discretion. 4. Actual area may vary from the stated area. 5. Drawings not to scale. 6. All images used are for illustrative purposes only and do not represent the actual size, features, specifications, fittings, and furnishings. 7. The developer reserves the right to make revisions/alterations, at its absolute discretion, without any liability whatsoever.



1. All dimensions are in imperial and metric, and measured to structural elements and exclude wall finishes and construction tolerances. 2. All materials, dimensions, and drawings are approximate only. 3. Information is subject to change without notice, at developer's absolute discretion. 4. Actual area may vary from the stated area. 5. Drawings not to scale. 6. All images used are for illustrative purposes only and do not represent the actual size, features, specifications, fittings, and furnishings. 7. The developer reserves the right to make revisions/alterations, at its absolute discretion, without any liability whatsoever.

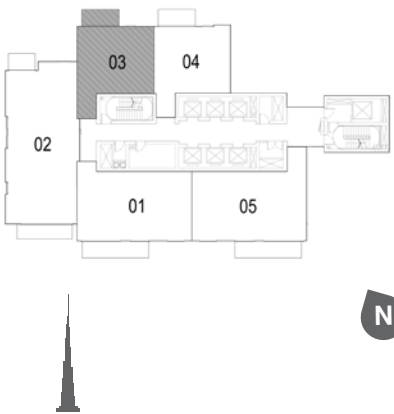


DUBAI CREEK

HARBOUR



TOWER 2
1 BEDROOM W/ TERRACE
UNIT 03 / LEVEL P03



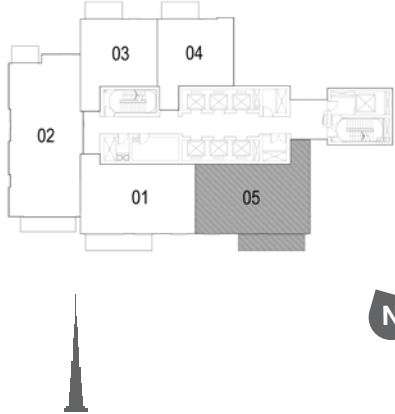
Suite Area	711 Sq.ft. / 66.07 Sq.m.
Balcony Area	63 Sq.ft. / 71.91 Sq.m.
Total Area	774 Sq.ft. / 71.91 Sq.m.

DUBAI CREEK

HARBOUR



TOWER 2
2 BEDROOM W/ TERRACE
UNIT 05/ LEVEL P03



Suite Area	1113 Sq.ft. / 103.40 Sq.m.
Balcony Area	133 Sq.ft. / 12.31 Sq.m.
Total Area	1246 Sq.ft. / 115.71 Sq.m.



1. All dimensions are in imperial and metric, and measured to structural elements and exclude wall finishes and construction tolerances. 2. All materials, dimensions, and drawings are approximate only. 3. Information is subject to change without notice, at developer's absolute discretion. 4. Actual area may vary from the stated area. 5. Drawings not to scale. 6. All images used are for illustrative purposes only and do not represent the actual size, features, specifications, fittings, and furnishings. 7. The developer reserves the right to make revisions/alterations, at its absolute discretion, without any liability whatsoever.

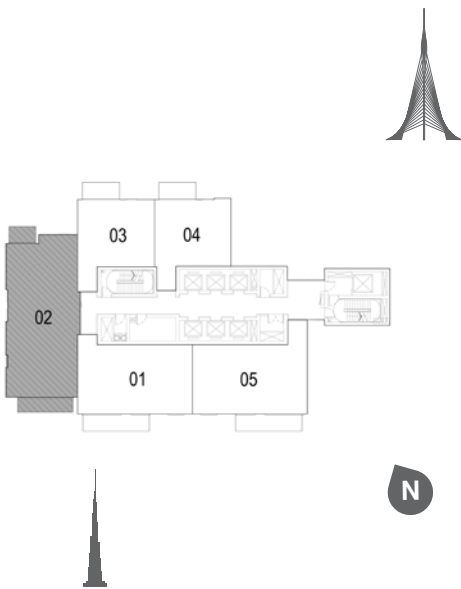
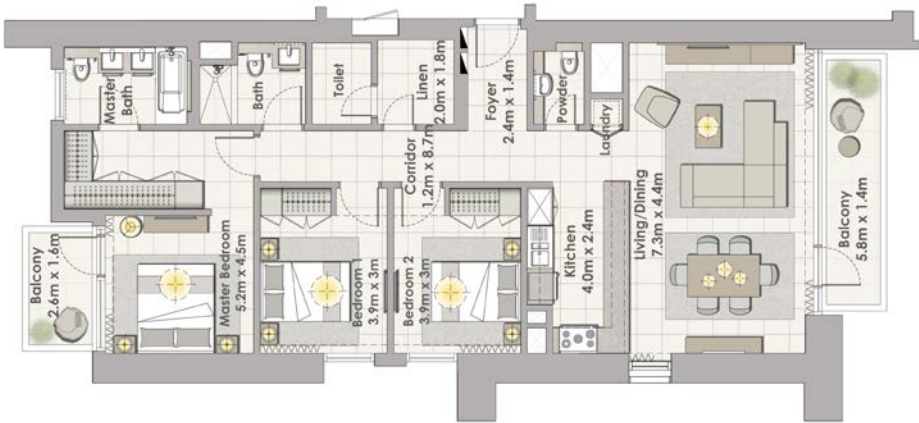


1. All dimensions are in imperial and metric, and measured to structural elements and exclude wall finishes and construction tolerances. 2. All materials, dimensions, and drawings are approximate only. 3. Information is subject to change without notice, at developer's absolute discretion. 4. Actual area may vary from the stated area. 5. Drawings not to scale. 6. All images used are for illustrative purposes only and do not represent the actual size, features, specifications, fittings, and furnishings. 7. The developer reserves the right to make revisions/alterations, at its absolute discretion, without any liability whatsoever.



DUBAI CREEK

HARBOUR

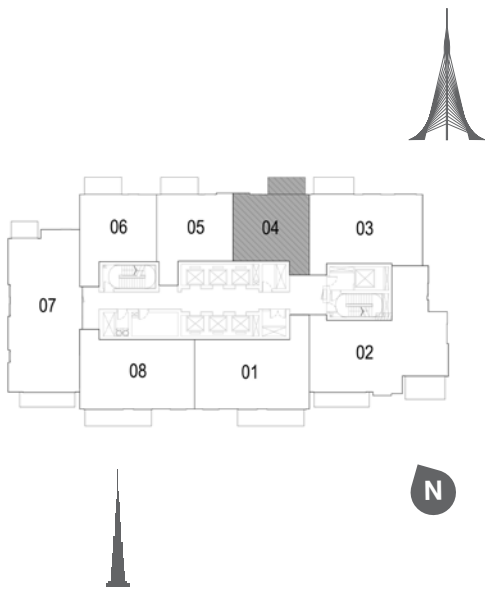


TOWER 2
3 BEDROOM W/ TERRACE
UNIT 02/ LEVEL P03

Suite Area	1468 Sq.ft. / 136.41 Sq.m.
Balcony Area	162 Sq.ft. / 15.09 Sq.m.
Total Area	1637 Sq.ft. / 151.50 Sq.m.

DUBAI CREEK

HARBOUR



TOWER 2
1 BEDROOM W/ TERRACE
UNIT 04/ LEVEL 2-17

Suite Area	706 Sq.ft. / 65.63 Sq.m.
Balcony Area	76 Sq.ft. / 7.03 Sq.m.
Total Area	782 Sq.ft. / 72.66 Sq.m.



1. All dimensions are in imperial and metric, and measured to structural elements and exclude wall finishes and construction tolerances. 2. All materials, dimensions, and drawings are approximate only. 3. Information is subject to change without notice, at developer's absolute discretion. 4. Actual area may vary from the stated area. 5. Drawings not to scale. 6. All images used are for illustrative purposes only and do not represent the actual size, features, specifications, fittings, and furnishings. 7. The developer reserves the right to make revisions/alterations, at its absolute discretion, without any liability whatsoever.

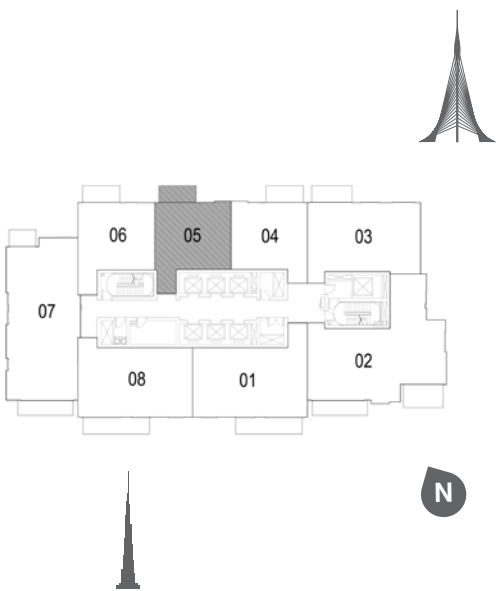


1. All dimensions are in imperial and metric, and measured to structural elements and exclude wall finishes and construction tolerances. 2. All materials, dimensions, and drawings are approximate only. 3. Information is subject to change without notice, at developer's absolute discretion. 4. Actual area may vary from the stated area. 5. Drawings not to scale. 6. All images used are for illustrative purposes only and do not represent the actual size, features, specifications, fittings, and furnishings. 7. The developer reserves the right to make revisions/alterations, at its absolute discretion, without any liability whatsoever.



DUBAI CREEK

HARBOUR

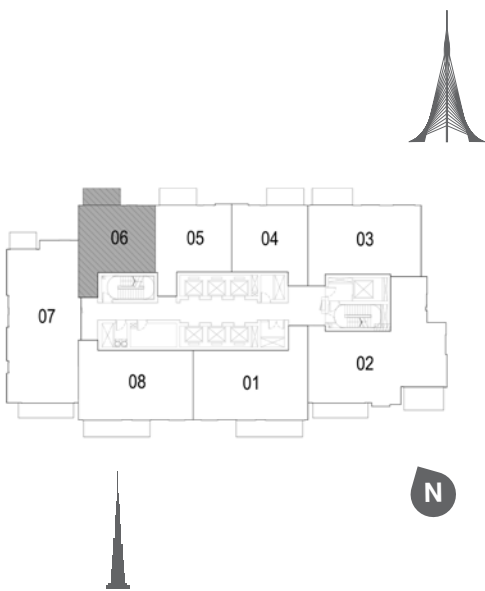


TOWER 2
1 BEDROOM W/ TERRACE
UNIT 05/ LEVEL 2-17

Suite Area	707 Sq.ft. / 65.70 Sq.m.
Balcony Area	76 Sq.ft. / 7.03 Sq.m.
Total Area	783 Sq.ft. / 72.73 Sq.m.

DUBAI CREEK

HARBOUR



TOWER 2
1 BEDROOM W/ TERRACE
UNIT 06/ LEVEL 2-17

Suite Area	693 Sq.ft. / 64.34 Sq.m.
Balcony Area	63 Sq.ft. / 5.81 Sq.m.
Total Area	756 Sq.ft. / 70.15 Sq.m.



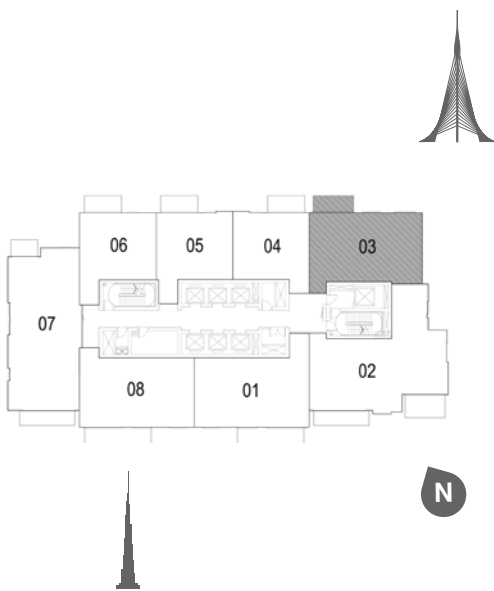
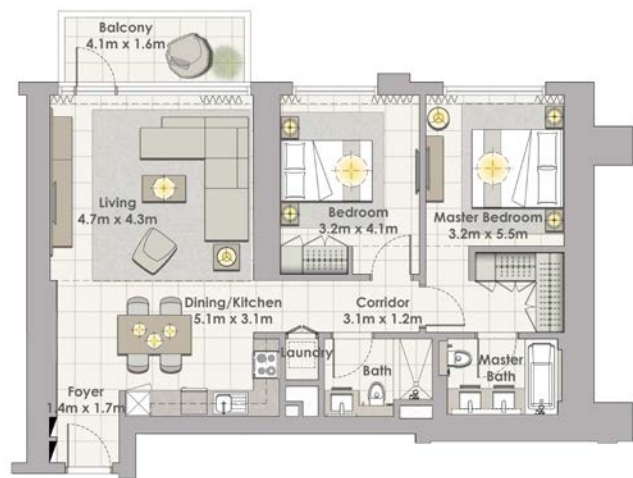
1. All dimensions are in imperial and metric, and measured to structural elements and exclude wall finishes and construction tolerances. 2. All materials, dimensions, and drawings are approximate only. 3. Information is subject to change without notice, at developer's absolute discretion. 4. Actual area may vary from the stated area. 5. Drawings not to scale. 6. All images used are for illustrative purposes only and do not represent the actual size, features, specifications, fittings, and furnishings. 7. The developer reserves the right to make revisions/alterations, at its absolute discretion, without any liability whatsoever.



1. All dimensions are in imperial and metric, and measured to structural elements and exclude wall finishes and construction tolerances. 2. All materials, dimensions, and drawings are approximate only. 3. Information is subject to change without notice, at developer's absolute discretion. 4. Actual area may vary from the stated area. 5. Drawings not to scale. 6. All images used are for illustrative purposes only and do not represent the actual size, features, specifications, fittings, and furnishings. 7. The developer reserves the right to make revisions/alterations, at its absolute discretion, without any liability whatsoever.



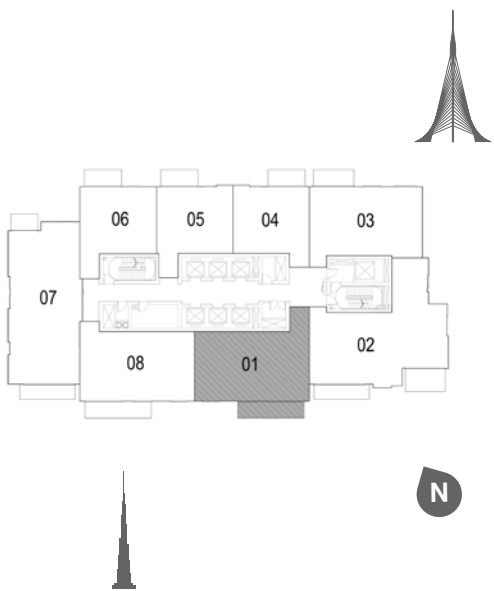
DUBAI CREEK
HARBOUR



TOWER 2
2 BEDROOM W/ TERRACE
UNIT 03/ LEVEL 2-17

Suite Area	1063 Sq.ft. / 98.80 Sq.m.
Balcony Area	76 Sq.ft. / 7.03 Sq.m.
Total Area	1139 Sq.ft. / 105.83 Sq.m.

DUBAI CREEK
HARBOUR



TOWER 2
2 BEDROOM W/ TERRACE
UNIT 01/ LEVEL 2-17

Suite Area	1112 Sq.ft. / 103.30 Sq.m.
Balcony Area	133 Sq.ft. / 12.31 Sq.m.
Total Area	1245 Sq.ft. / 115.61 Sq.m.



1. All dimensions are in imperial and metric, and measured to structural elements and exclude wall finishes and construction tolerances. 2. All materials, dimensions, and drawings are approximate only. 3. Information is subject to change without notice, at developer's absolute discretion. 4. Actual area may vary from the stated area. 5. Drawings not to scale. 6. All images used are for illustrative purposes only and do not represent the actual size, features, specifications, fittings, and furnishings. 7. The developer reserves the right to make revisions/alterations, at its absolute discretion, without any liability whatsoever.

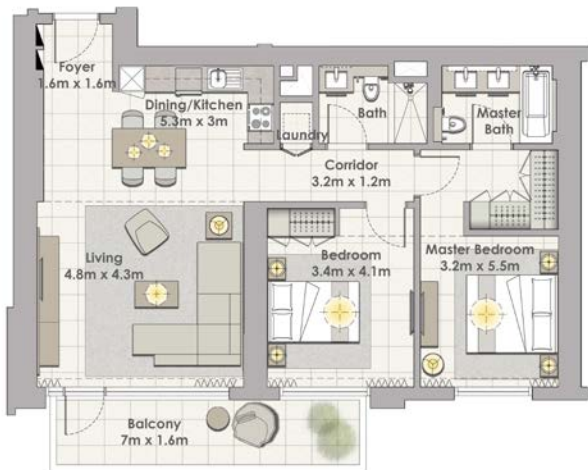


1. All dimensions are in imperial and metric, and measured to structural elements and exclude wall finishes and construction tolerances. 2. All materials, dimensions, and drawings are approximate only. 3. Information is subject to change without notice, at developer's absolute discretion. 4. Actual area may vary from the stated area. 5. Drawings not to scale. 6. All images used are for illustrative purposes only and do not represent the actual size, features, specifications, fittings, and furnishings. 7. The developer reserves the right to make revisions/alterations, at its absolute discretion, without any liability whatsoever.



DUBAI CREEK

HARBOUR



TOWER 2
2 BEDROOM W/ TERRACE
UNIT 08/ LEVEL 2-17

Suite Area	1075 Sq.ft. / 99.89 Sq.m.
Balcony Area	133 Sq.ft. / 12.31 Sq.m.
Total Area	1208 Sq.ft. / 112.20 Sq.m.

DUBAI CREEK

HARBOUR



TOWER 2
3 BEDROOM W/ TERRACE
UNIT 02/ LEVEL 2-17

Suite Area	1515 Sq.ft. / 140.77 Sq.m.
Balcony Area	180 Sq.ft. / 16.71 Sq.m.
Total Area	1695 Sq.ft. / 157.48 Sq.m.



1. All dimensions are in imperial and metric, and measured to structural elements and exclude wall finishes and construction tolerances. 2. All materials, dimensions, and drawings are approximate only. 3. Information is subject to change without notice, at developer's absolute discretion. 4. Actual area may vary from the stated area. 5. Drawings not to scale. 6. All images used are for illustrative purposes only and do not represent the actual size, features, specifications, fittings, and furnishings. 7. The developer reserves the right to make revisions/alterations, at its absolute discretion, without any liability whatsoever.

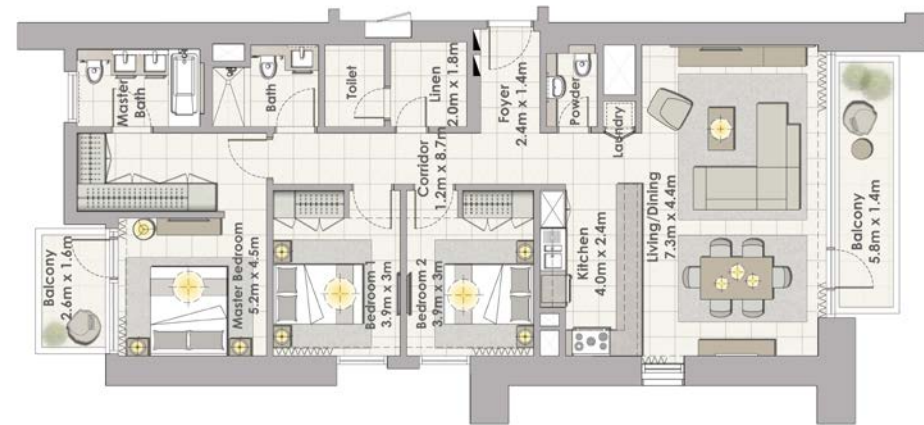


1. All dimensions are in imperial and metric, and measured to structural elements and exclude wall finishes and construction tolerances. 2. All materials, dimensions, and drawings are approximate only. 3. Information is subject to change without notice, at developer's absolute discretion. 4. Actual area may vary from the stated area. 5. Drawings not to scale. 6. All images used are for illustrative purposes only and do not represent the actual size, features, specifications, fittings, and furnishings. 7. The developer reserves the right to make revisions/alterations, at its absolute discretion, without any liability whatsoever.



DUBAI CREEK

HARBOUR



TOWER 2

3 BEDROOM W/ TERRACE

UNIT 07/ LEVEL 2-17



Suite Area	1467 Sq.ft. / 136.30 Sq.m.
Balcony Area	162 Sq.ft. / 15.01 Sq.m.
Total Area	1629 Sq.ft. / 151.31 Sq.m.

DUBAI CREEK

HARBOUR



TOWER 2

1 BEDROOM W/ TERRACE

UNIT 04/ LEVEL 19-28



Suite Area	707 Sq.ft. / 65.68 Sq.m.
Balcony Area	76 Sq.ft. / 7.07 Sq.m.
Total Area	783 Sq.ft. / 72.75 Sq.m.



1. All dimensions are in imperial and metric, and measured to structural elements and exclude wall finishes and construction tolerances. 2. All materials, dimensions, and drawings are approximate only. 3. Information is subject to change without notice, at developer's absolute discretion. 4. Actual area may vary from the stated area. 5. Drawings not to scale. 6. All images used are for illustrative purposes only and do not represent the actual size, features, specifications, fittings, and furnishings. 7. The developer reserves the right to make revisions/alterations, at its absolute discretion, without any liability whatsoever.

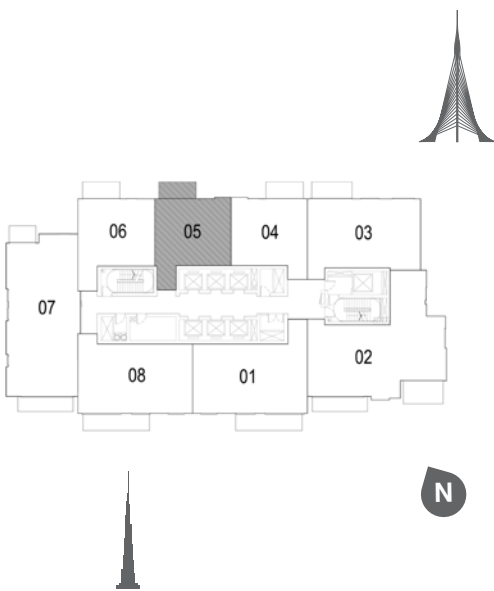


1. All dimensions are in imperial and metric, and measured to structural elements and exclude wall finishes and construction tolerances. 2. All materials, dimensions, and drawings are approximate only. 3. Information is subject to change without notice, at developer's absolute discretion. 4. Actual area may vary from the stated area. 5. Drawings not to scale. 6. All images used are for illustrative purposes only and do not represent the actual size, features, specifications, fittings, and furnishings. 7. The developer reserves the right to make revisions/alterations, at its absolute discretion, without any liability whatsoever.



DUBAI CREEK

HARBOUR

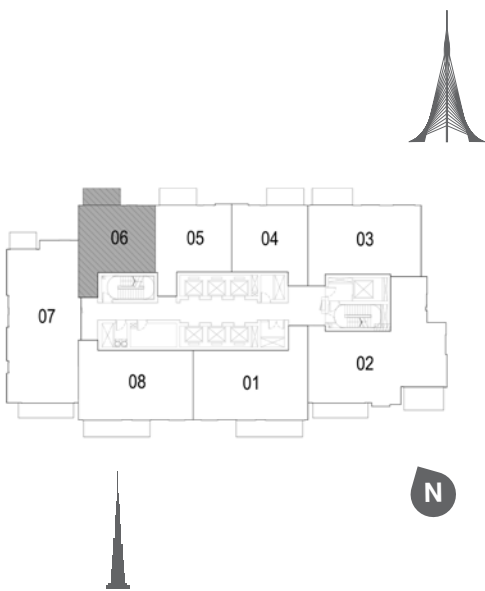


TOWER 2
1 BEDROOM W/ TERRACE
UNIT 05/ LEVEL 19-28

Suite Area	707 Sq.ft. / 65.67 Sq.m.
Balcony Area	76 Sq.ft. / 7.07 Sq.m.
Total Area	783 Sq.ft. / 72.74 Sq.m.

DUBAI CREEK

HARBOUR



TOWER 2
1 BEDROOM W/ TERRACE
UNIT 06/ LEVEL 19-28

Suite Area	708 Sq.ft. / 65.77 Sq.m.
Balcony Area	63 Sq.ft. / 5.84 Sq.m.
Total Area	771 Sq.ft. / 72.61 Sq.m.



1. All dimensions are in imperial and metric, and measured to structural elements and exclude wall finishes and construction tolerances. 2. All materials, dimensions, and drawings are approximate only. 3. Information is subject to change without notice, at developer's absolute discretion. 4. Actual area may vary from the stated area. 5. Drawings not to scale. 6. All images used are for illustrative purposes only and do not represent the actual size, features, specifications, fittings, and furnishings. 7. The developer reserves the right to make revisions/alterations, at its absolute discretion, without any liability whatsoever.

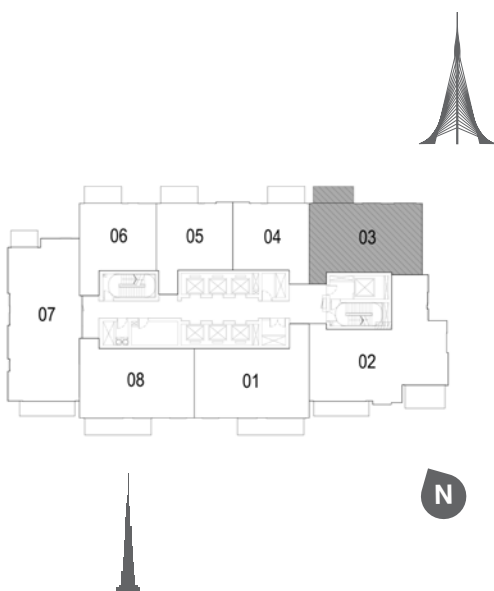
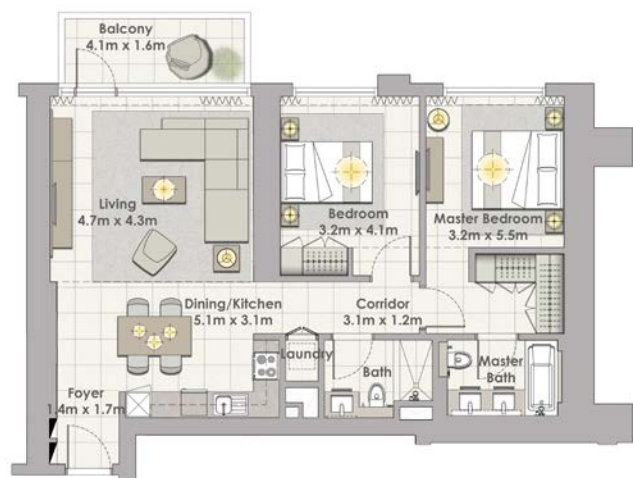


1. All dimensions are in imperial and metric, and measured to structural elements and exclude wall finishes and construction tolerances. 2. All materials, dimensions, and drawings are approximate only. 3. Information is subject to change without notice, at developer's absolute discretion. 4. Actual area may vary from the stated area. 5. Drawings not to scale. 6. All images used are for illustrative purposes only and do not represent the actual size, features, specifications, fittings, and furnishings. 7. The developer reserves the right to make revisions/alterations, at its absolute discretion, without any liability whatsoever.



DUBAI CREEK

HARBOUR

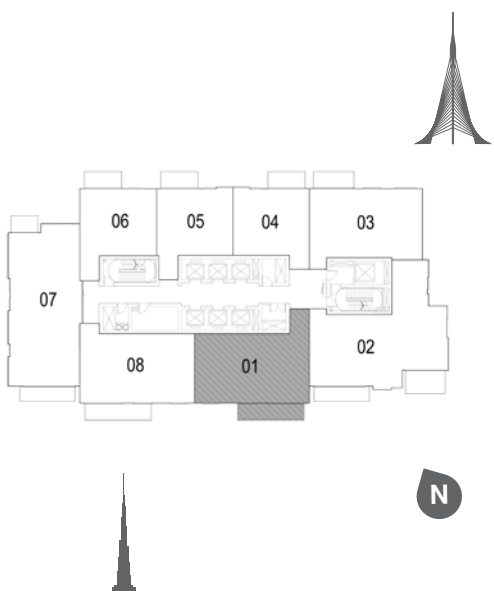


TOWER 2
2 BEDROOM W/ TERRACE
UNIT 03/ LEVEL 19-28

Suite Area	1060 Sq.ft. / 98.49 Sq.m.
Balcony Area	76 Sq.ft. / 7.07 Sq.m.
Total Area	1136 Sq.ft. / 105.56 Sq.m.

DUBAI CREEK

HARBOUR



TOWER 2
2 BEDROOM W/ TERRACE
UNIT 01/ LEVEL 19-28

Suite Area	1120 Sq.ft. / 104.05 Sq.m.
Balcony Area	133 Sq.ft. / 12.31 Sq.m.
Total Area	1253 Sq.ft. / 116.36 Sq.m.



1. All dimensions are in imperial and metric, and measured to structural elements and exclude wall finishes and construction tolerances. 2. All materials, dimensions, and drawings are approximate only. 3. Information is subject to change without notice, at developer's absolute discretion. 4. Actual area may vary from the stated area. 5. Drawings not to scale. 6. All images used are for illustrative purposes only and do not represent the actual size, features, specifications, fittings, and furnishings. 7. The developer reserves the right to make revisions/alterations, at its absolute discretion, without any liability whatsoever.

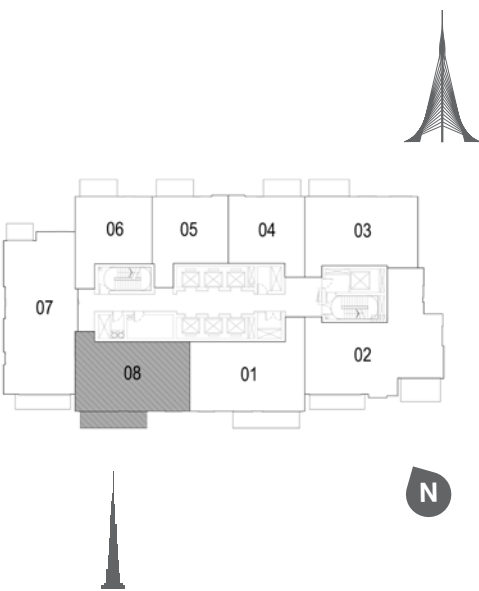


1. All dimensions are in imperial and metric, and measured to structural elements and exclude wall finishes and construction tolerances. 2. All materials, dimensions, and drawings are approximate only. 3. Information is subject to change without notice, at developer's absolute discretion. 4. Actual area may vary from the stated area. 5. Drawings not to scale. 6. All images used are for illustrative purposes only and do not represent the actual size, features, specifications, fittings, and furnishings. 7. The developer reserves the right to make revisions/alterations, at its absolute discretion, without any liability whatsoever.



DUBAI CREEK

HARBOUR

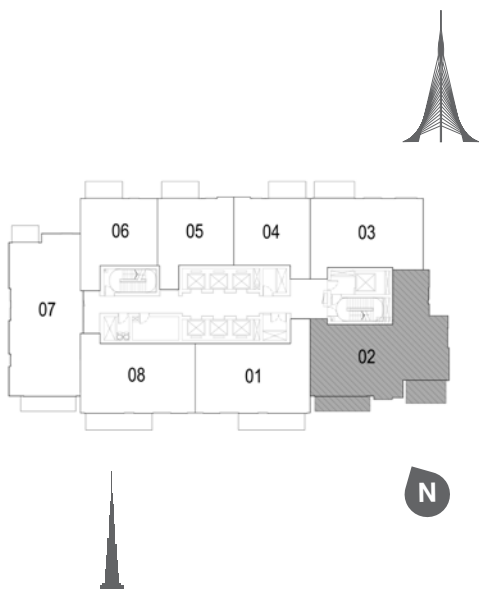


TOWER 2
2 BEDROOM W/ TERRACE
UNIT 08/ LEVEL 19-28

Suite Area	1082 Sq.ft. / 100.54 Sq.m.
Balcony Area	133 Sq.ft. / 12.31 Sq.m.
Total Area	1215 Sq.ft. / 112.85 Sq.m.

DUBAI CREEK

HARBOUR



TOWER 2
3 BEDROOM W/ TERRACE
UNIT 02/ LEVEL 19-28

Suite Area	1524 Sq.ft. / 141.54 Sq.m.
Balcony Area	180 Sq.ft. / 16.75 Sq.m.
Total Area	1704 Sq.ft. / 158.29 Sq.m.



1. All dimensions are in imperial and metric, and measured to structural elements and exclude wall finishes and construction tolerances. 2. All materials, dimensions, and drawings are approximate only. 3. Information is subject to change without notice, at developer's absolute discretion. 4. Actual area may vary from the stated area. 5. Drawings not to scale. 6. All images used are for illustrative purposes only and do not represent the actual size, features, specifications, fittings, and furnishings. 7. The developer reserves the right to make revisions/alterations, at its absolute discretion, without any liability whatsoever.

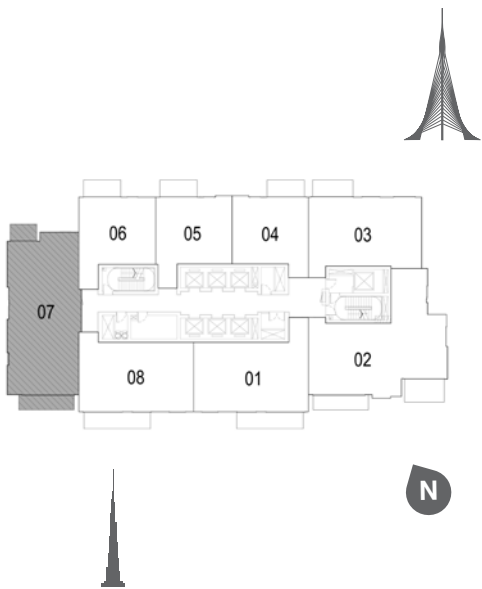
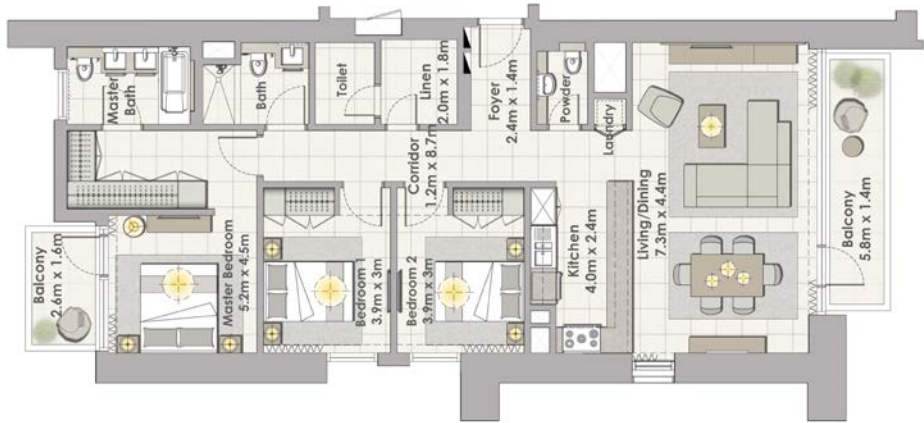


1. All dimensions are in imperial and metric, and measured to structural elements and exclude wall finishes and construction tolerances. 2. All materials, dimensions, and drawings are approximate only. 3. Information is subject to change without notice, at developer's absolute discretion. 4. Actual area may vary from the stated area. 5. Drawings not to scale. 6. All images used are for illustrative purposes only and do not represent the actual size, features, specifications, fittings, and furnishings. 7. The developer reserves the right to make revisions/alterations, at its absolute discretion, without any liability whatsoever.



DUBAI CREEK

HARBOUR



TOWER 2

3 BEDROOM W/ TERRACE

UNIT 07/ LEVEL 19-28

Suite Area	1471 Sq.ft. / 136.65 Sq.m.
Balcony Area	162 Sq.ft. / 15.09 Sq.m.
Total Area	1633 Sq.ft. / 151.74 Sq.m.



1. All dimensions are in imperial and metric, and measured to structural elements and exclude wall finishes and construction tolerances. 2. All materials, dimensions, and drawings are approximate only. 3. Information is subject to change without notice, at developer's absolute discretion. 4. Actual area may vary from the stated area. 5. Drawings not to scale. 6. All images used are for illustrative purposes only and do not represent the actual size, features, specifications, fittings, and furnishings. 7. The developer reserves the right to make revisions/alterations, at its absolute discretion, without any liability whatsoever.



For more information
please call /WhatsAppTrupti Nair on 00971 507851492
Email: trupti@homeloungeuae.com

