



ARTISTIC  
HEIGHTS

Jumeirah Village Circle | Dubai



## Welcome Home

### ARTISTIC HEIGHTS

As the name suggests, this residential tower is unique in its development; designed with innovation and creativity, balanced with functional living.

Artistic Heights is carefully crafted to meet the requirements of the new generation combined with distinctive retail amenities, put together in a contemporary chic, urban fashion. We offer high-on-value spaces in keeping with the evolving demand of the market by making affordable living a reality.

Lowest prices offering  
double-digit rental yield

**8%  
to 11%**  
net rental  
yields





## Space to Live

ARTISTIC HEIGHTS

THE PROJECT | 4 B + G + 17 FLOORS

|    |   |
|----|---|
| 79 | STUDIO<br>Average Size: 414 sq. ft. - 657 sq. ft.<br>Starting Price: AED 399,000 - AED 703,850            |
| 96 | 1 BEDROOM<br>Average Size: 861 sq. ft. - 994 sq. ft.<br>Starting Price: AED 841,000 - AED 983,150         |
| 47 | 2 BEDROOM<br>Average Size: 1,437 sq. ft. - 1,572 sq. ft.<br>Starting Price: AED 1,187,525 - AED 1,468,100 |
| 04 | 3 BEDROOM<br>Average Size: 1,989 sq. ft. - 2,690 sq. ft.<br>Starting Price: AED 1,877,000 - AED 2,540,000 |

FINANCE AVAILABLE

Subject to status





## A time to plan, a time to live

Our soft payment plan allows you to budget whilst we build. Safe in the knowledge that all payments are linked to construction and deposited through the developer escrow account governed by the Dubai Land Department and Real Estate Regulatory Authority.



### — 2017 —

**5%**

On Reservation

**5%**

30 Days

**5%**

July 2017

**5%**

Oct. 2017

### — 2018 —

**10%**

January 2018

**10%**

April 2018

**10%**

August 2018

### — 2019 —

**10%**

January 2019

**10%**

June 2019

**30%**

Nov. 2019



## Artistic Heights Highlights

- Children's Play Area
- Swimming Pool
- His & Her Steam, Sauna & Gymnasium
- Coffee Shop
- Secure Parking
- Urban Chic Interiors
- Contemporary Styling
- Modern Apartments
- Cool Bathrooms









## Discover Dubai

World-class tourism destination known for its luxury, ultra-modern skyline architecture and innovation. The city offers consistent economic and population growth along with the highest return investment opportunities when compared to other major real estate capitals in the world.





## Lifestyle and Leisure

### LANDMARKS

1. Burj Al Arab
2. Arabian Ranches
3. Clock Tower
4. Dubai International Airport
5. Dubai Internet city/Media City
6. Dubai Marina
7. Dubai Land
8. Emirates Hills
9. Global Village
10. Jumeirah beach residence
11. The Palm Deira
12. The Palm Jebel Ali
13. The Palm Jumeirah
14. The World Island

### SHOPPING

15. Mall of the Emirates
16. Ibn Battuta
17. Dubai Mall

### GOLF

18. Arabian Ranches Golf Club
19. Dubai Creek Golf & Yacht Club
20. The Els Club
21. Emirates Golf Club
22. Four Seasons Golf Club Festival City
23. Jebel Ali Golf Resort & Spa
24. Jumeirah Golf Estate
25. The Montgomerie Dubai





## ↑ Jumeirah Village Circle



## ↑ The Area

Located in the heart of new Dubai, Jumeirah Village Circle is designed to provide a sense of community and has all the modern facilities of a city in a tranquil and village settings.

It offers a healthy lifestyle while its communities provide all the amenities needed to live life to the fullest. Parks, sports fields, schools and mosques will be clustered throughout the abundant green expanses of the development so as to cater for the whole family.

Located in one of the most accessible areas of Dubai, with its own distinctive architecture and host of facilities, Jumeirah Village provides a beautiful, self contained environment for residents. In addition, in terms of its design, Jumeirah Village sets out to capture a sense of symmetry through a radial pattern with streets that end at a central community center.

The development offers a broad range of homes that ensure privacy and proximity to public space, and as a self contained community, the walkways and transport systems will increase mobility for residents, creating a fun, safe ambiance perfect for social interaction.



↑ Get to know Jumeirah Village Circle | Dubai



**Easy Access and growing to**  
Hessa Street / Motor City / Sports City  
Sheikh Mohd Bin Zayed Rd / Al Khail Road

**JVC | Connections**



**Upcoming Mall**

The Circle Mall is set to become the first shopping and leisure destination of Jumeirah Village Circle with over 1 million sq. ft. comprising of 400,000 sq. ft. of shopping, dining and entertainment.



235 shops, restaurants & cafés



Multi Screen Cinema



33 landscaped parks



Mosques



Kindergartens



Schools



Community Retail



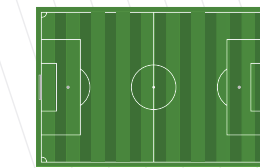
Play Areas



SPA Recreational Centers



Medical Clinics



Playing Fields



Basketball Courts



Tennis Courts



Fitness Centers



Swimming Pools



Cycling Trails



 **Your Neighborhood**  
SHOPPING & ENTERTAINMENT



MALL OF THE EMIRATES  
14 minutes



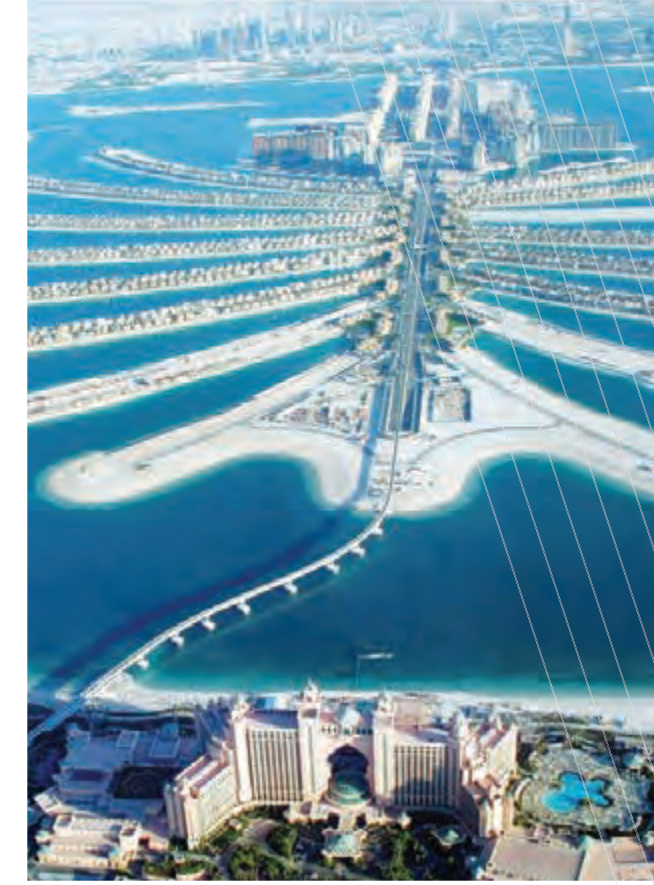
DUBAI MALL  
23 minutes



CITY WALK  
24 minutes



DUBAI MARINA  
15 minutes



PALM JUMEIRAH  
20 minutes



DOWNTOWN DUBAI  
20 minutes



**Your Neighborhood**  
FAMILY ADVENTURE



LEGOLAND  
30 minutes



IMG WORLD  
20 minutes



WILD WADI  
15 minutes



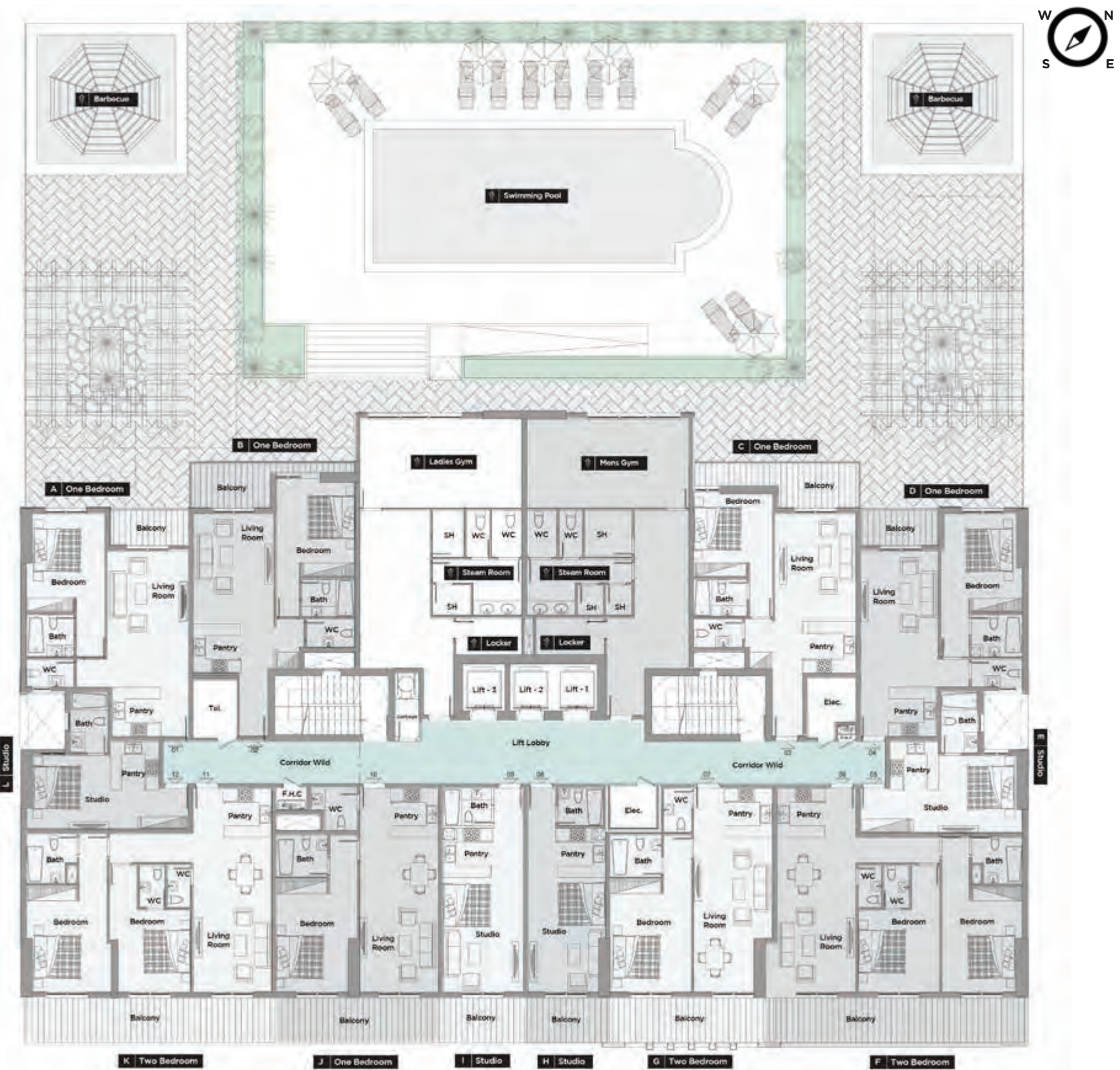
SKI DUBAI  
14 minutes





# ↑ 1st Floor

- 04 | Studio Apartments
- 06 | 1 Bedroom Apartments
- 02 | 2 Bedroom Apartments





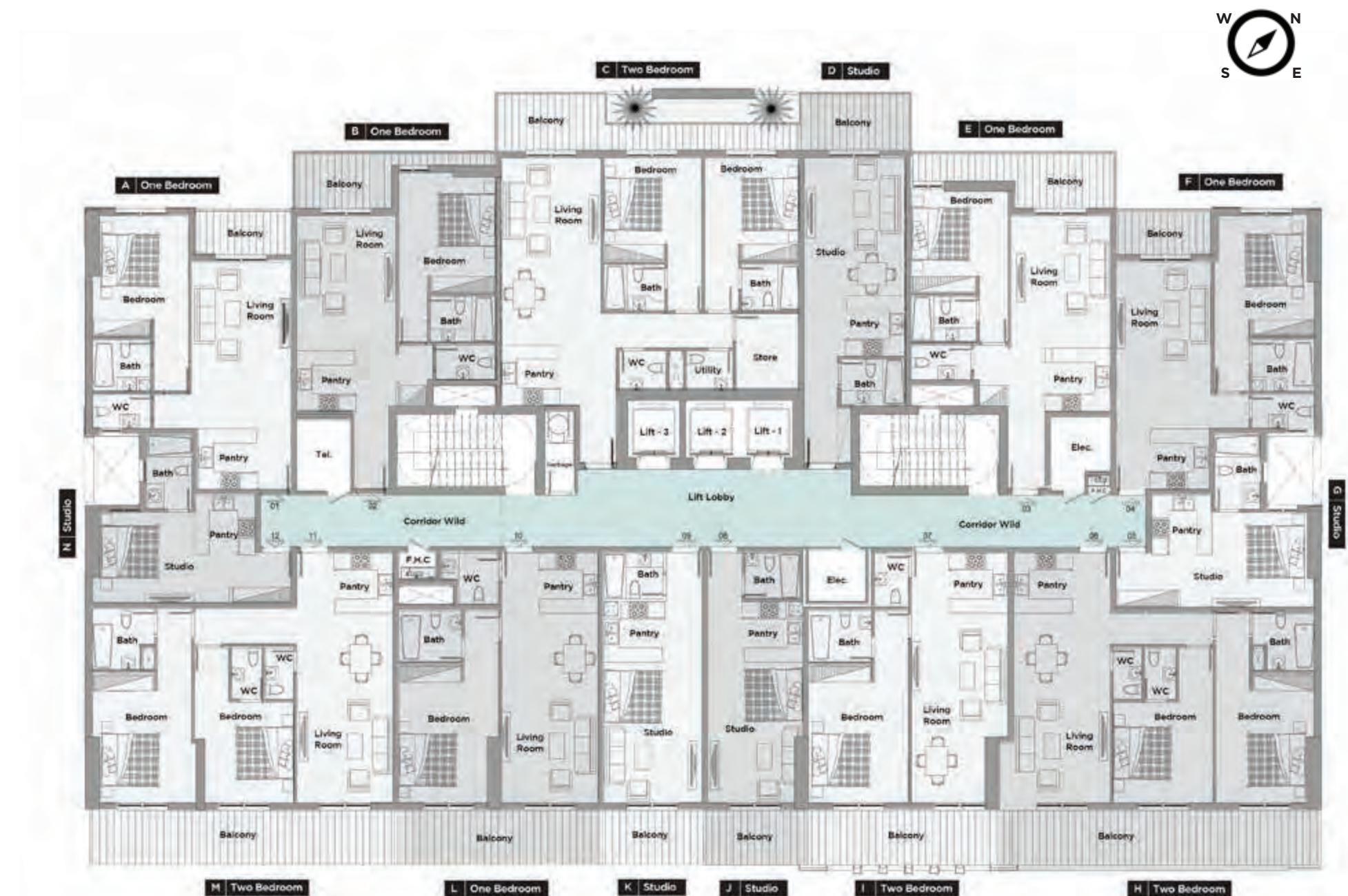
# ↑ 2nd to 16th Floor

05 | Studio Apartments

06 | 1 Bedroom Apartments

03 | 2 Bedroom Apartments

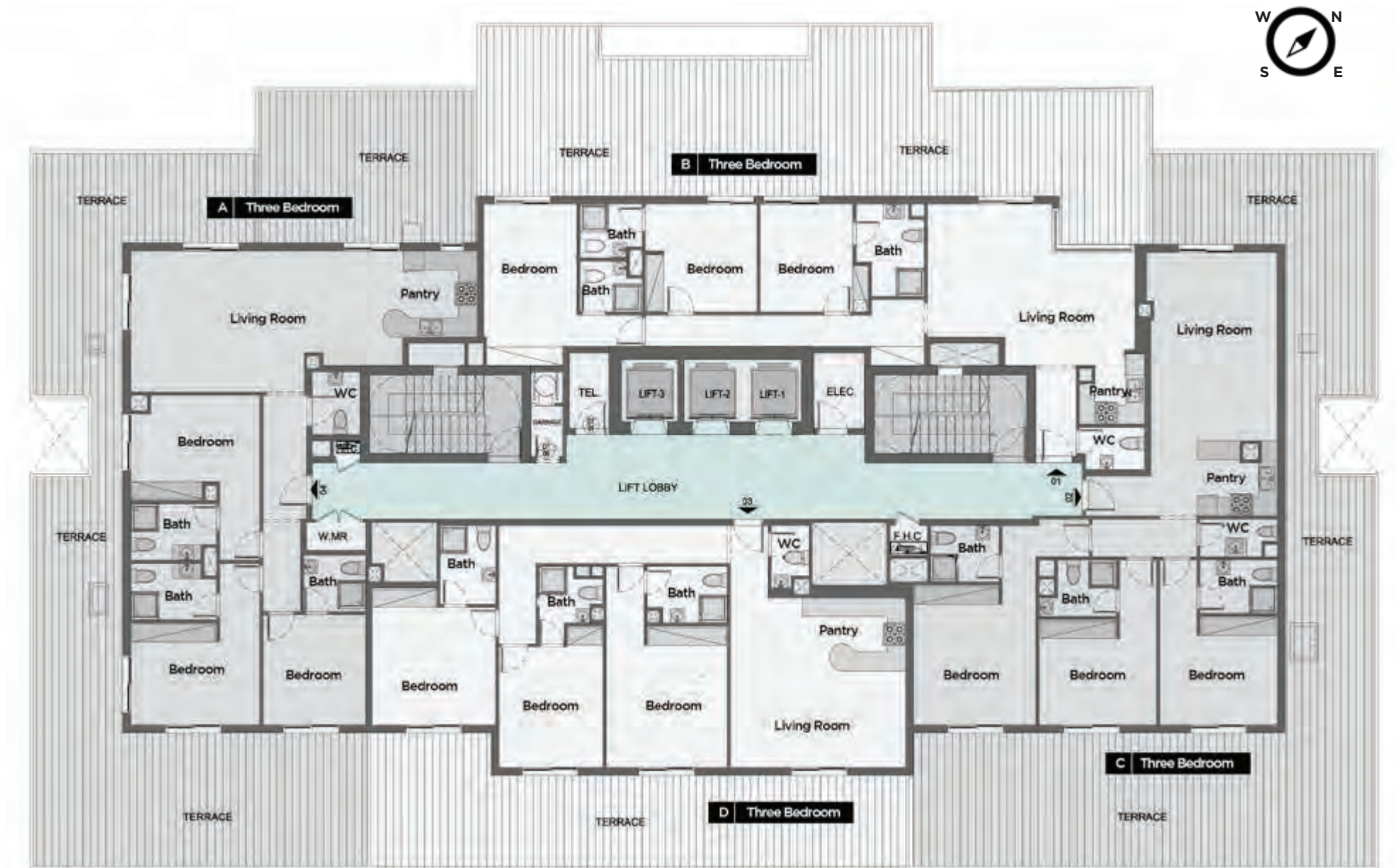
14 Units per floor





# 17th Floor

04 | 3 Bedroom Apartments





## Boundless Growth: The Future of Dubai

It is the land of the big, tall - the spectacular; diverse yet close-knit. Elite yet humble, posh yet welcoming. It is the land of opportunity. With over 2 million inhabitants, Dubai has distinguished itself in style and stature.

Whether it is The Palm Island, The Burj Al Arab. The Burj Khalifa or the Atlantis - Dubai continues to set new benchmarks for itself. The city is pacing, striding, sprinting - racing to outdo itself.





For more information  
please call /WhatsAppTrupti Nair on 00971 507851492  
Email: [trupti@homeloungeuae.com](mailto:trupti@homeloungeuae.com)