



MUDON

*A dream in motion*

# New Townhouses at Arabella 3



Welcome to  
**a rejuvenating  
lifestyle.**





**Mudon,**  
the perfect family  
destination.

**Contemporary  
residence within  
a bustling community.**





**Mudon Central Park.**  
Enjoy the great outdoors.



**Community Pools.**  
A refreshing break.

# Community Centre.

A lifestyle of leisure.



**Sleek  
architecture  
surrounds you.**

















# Ideally located with easy access

30



Downtown Dubai

15



Al Maktoum  
International  
Airport



EXPO 2020 Site

7



Global Village



IMG Worlds of  
Adventure

5



Hamdan  
Sports  
Complex



Dubai  
Cycling  
Course



Sheikh  
Mohammed  
Bin Zayed Road



Motor  
City

minutes







SUBSTATION



# 3 BEDROOM TOWNHOUSE

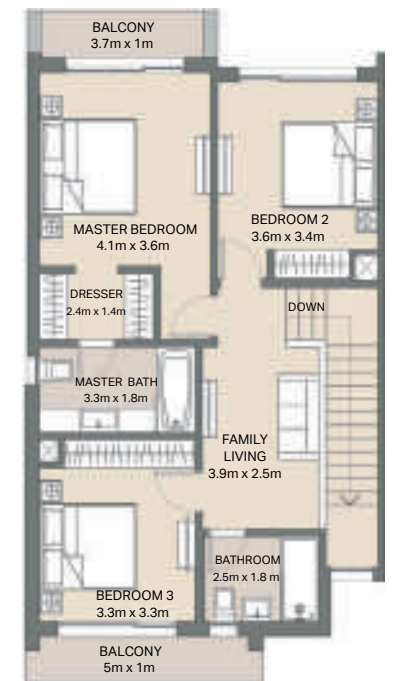
## Type A - End Unit

Suite Area 1876 Sqft (174.31 Sqm)  
Balcony 97 Sqft (9.0 Sqm)

Suite + Balcony 1973 Sqft (183.31 Sqm)  
Carport 355 Sqft (33.0 Sqm)



Ground Floor



First Floor

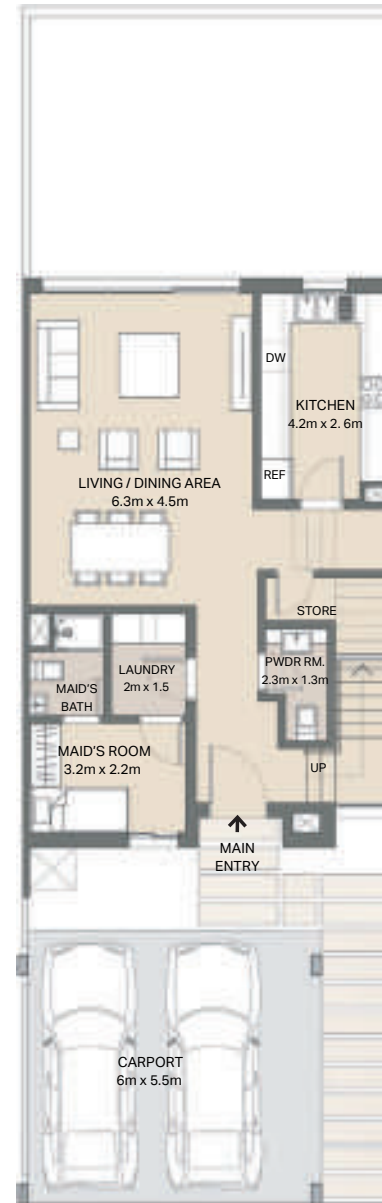


# 3 BEDROOM TOWNHOUSE

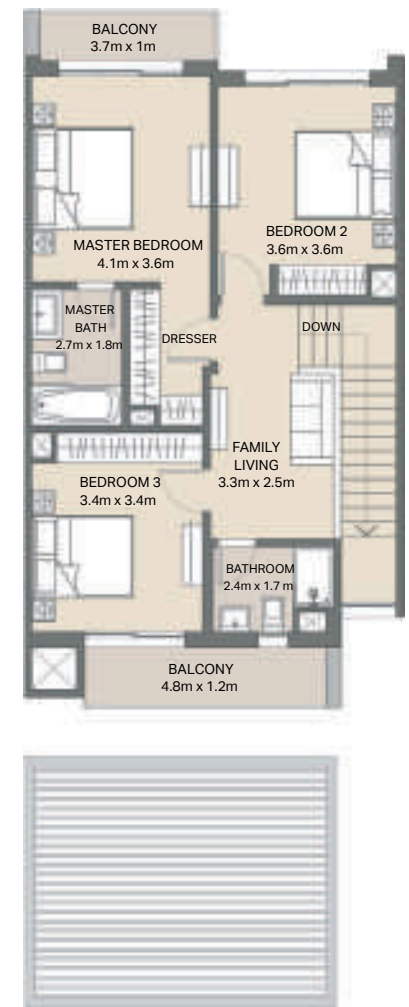
## Mid Unit

Suite Area 1857 Sqft (172.47 Sqm)  
Balcony 107 Sqft (9.95 Sqm)

Suite + Balcony 1964 Sqft (182.42 Sqm)  
Carport 355 Sqft (33.0 Sqm)



Ground Floor



First Floor

# 3 BEDROOM + MAID TOWNHOUSE

## Type B - Mid Unit

Total Area 2210 Sqft (205.3 Sqm)

Suite Area 1544 Sqft (143.44 Sqm)

Balcony 0.00

Suite 1544 Sqft (143.44 Sqm)

Carport 337 Sqft (31.35 Sqm)



Ground Floor



First Floor

# 3 BEDROOM TOWNHOUSE

## Type B - End Unit

Suite Area 1901 Sqft (176.58 Sqm)

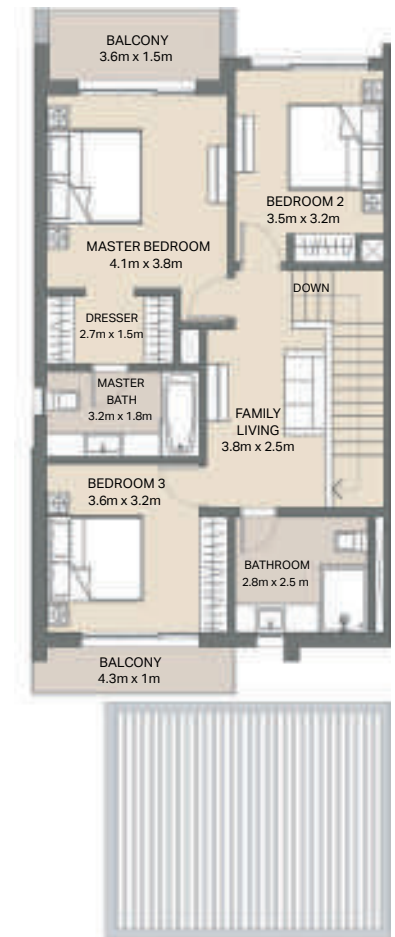
Balcony 113 Sqft (10.46 Sqm)

Suite + Balcony 2013 Sqft (187.04 Sqm)

Carport 355 Sqft (33.0 Sqm)



Ground Floor



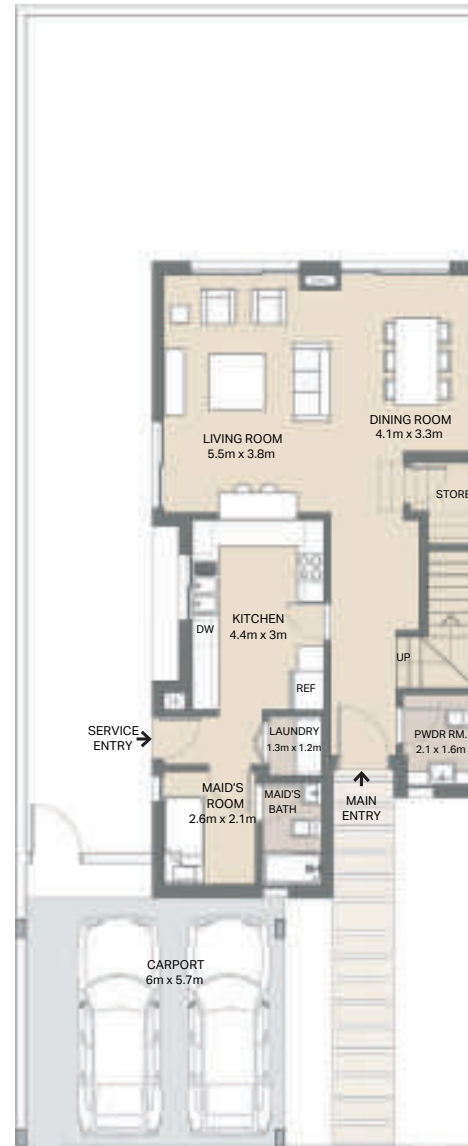
First Floor

# 3 BEDROOM

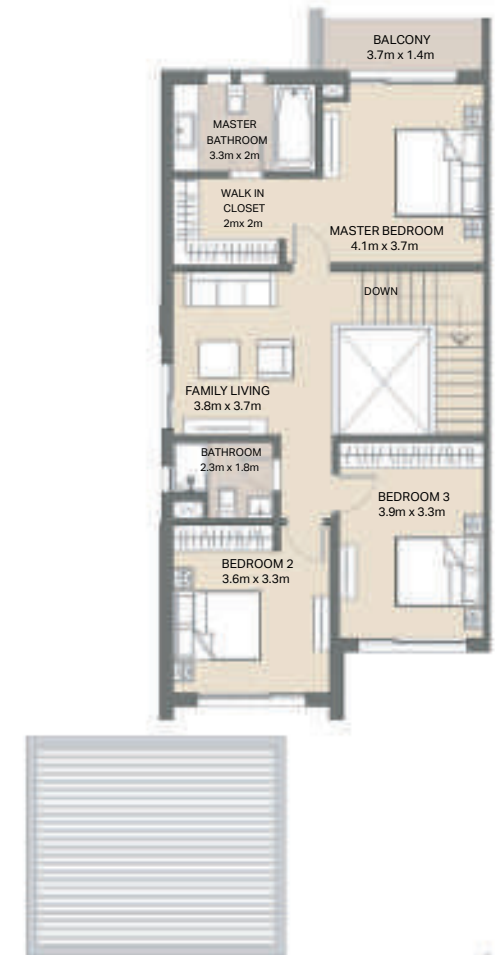
## Semi-Detached

Suite Area 2219 Sqft (206.15 Sqm)  
Balcony 62 Sqft (5.78 Sqm)

Suite + Balcony 2281 Sqft (211.93 Sqm)  
Carport 368 Sqft (34.2 Sqm)



Ground Floor



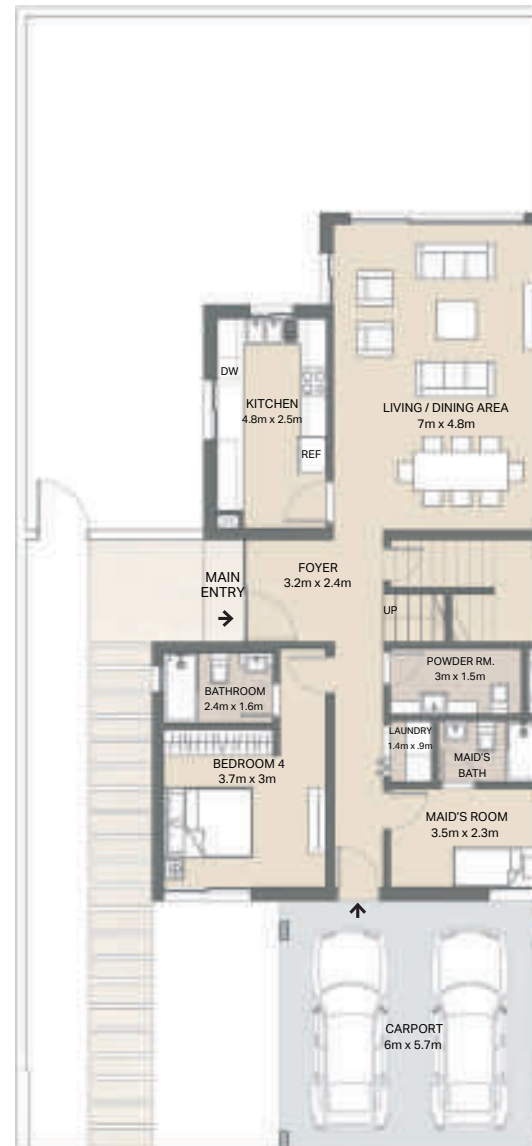
First Floor

# 4 BEDROOM

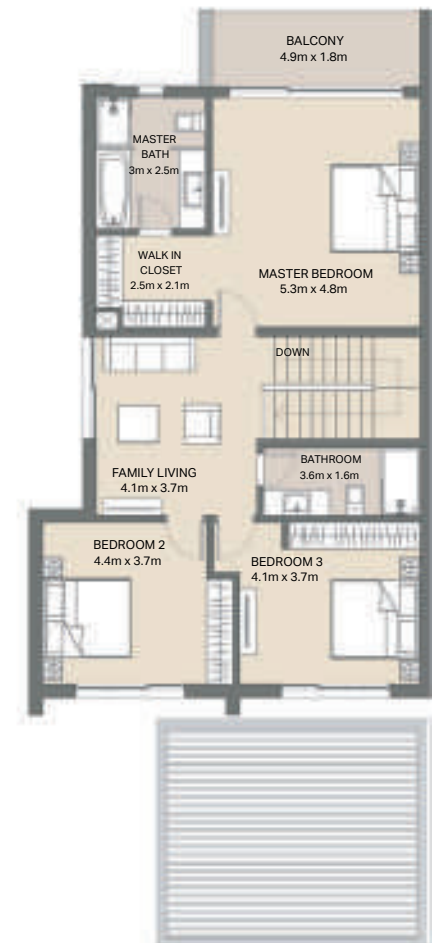
## Semi-Detached

Suite Area 2585 Sqft (240.17 Sqm)  
Balcony 98 Sqft (9.06 Sqm)

Suite + Balcony 2683 Sqft (249.23 Sqm)  
Carport 368 Sqft (34.2 Sqm)



Ground Floor



First Floor



# 4 BEDROOM + MAID TOWNHOUSE

## Type A (+) - End Unit

Total Area 2210 Sqft (205.3 Sqm)

Suite Area 1829 Sqft (169.89 Sqm)

Balcony 44 Sqft (4.06 Sqm)

Suite + Balcony 1873 Sqft (173.95 Sqm)

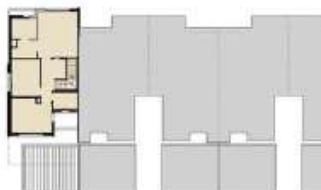
Carport 337 Sqft (31.35 Sqm)



Ground Floor



First Floor



# 5 BEDROOM

## Detached Villa

Suite Area 2923 Sqft (271.54 Sqm)  
Balcony 119 Sqft (11.01 Sqm)

Suite + Balcony 3041 Sqft (282.55 Sqm)  
Carport 388 Sqft (36.0 Sqm)



Ground Floor



First Floor

For more information  
please call /WhatsAppTrupti Nair on 00971 507851492  
Email: [trupti@homeloungeuae.com](mailto:trupti@homeloungeuae.com)