

DAMAC



AKO₂YA
OXYGEN



IMAGINE
NATURE IN ALL
ITS GLORY



**IMAGINE LIFE
AT THE HEART
OF NATURE**



JATROPHA PANDURIFOLIA

An evergreen shrub with small flowers surrounded by bright red bracts, often heralded as the "everyday-flowered cherry blossom".



AKOYA OXYGEN green is the new colour of luxury

Close to the city, yet away from the everyday. At the heart of nature, and with nature at the heart. AKOYA Oxygen melts away the hustle and bustle of urban life with an ecosystem that is unique in every way. Energy-efficient homes surrounded by enchanting lush greenery and cascading water features. In all things, this is luxury unimagined.



AKOYA OXYGEN the first green luxury residential address in Dubai

Luxury and greenery embrace you with open arms at AKOYA Oxygen. This breathtaking community will be home to some of the most unseen marvels inspired by nature. Cleaner air, naturally cooler temperature, eco-friendly interior features, landscape irrigation system and solar powered communities are just few of the many secrets.



LANTANA CAMARA DWARF

A beautiful, tender shrub that grows to about four feet high, perfect showpiece for the full-sun deck, patio or balcony.



AKOYA OXYGEN nature and luxury in perfection

AKOYA Oxygen is a residential community with a difference. It's a masterpiece that isn't just architecturally accomplished. In fact, with over 4,000 trees across 1 million square metres, it's a way of life in perfect harmony with natural beauty that is both endearing and sustainable.



HIBISCUS

A family of funnel-shape flowers that need constant care, attention and water; for a hint of tropical flair in your garden.



AKOYA OXYGEN luxury homes to suit every kind

Enclosed somewhere within the acres of sun-kissed grass and unseen floral life are luxury homes, built to perfection. Picturesque surroundings and tranquil environs remain standard accessories.



ZAMIA FURFURACEA
Native to Mexico and part of the illustrious cycad family, one of the world's oldest plant groups, dating back 300 million years.



WHAT MAKES AKOYA OXYGEN green culture

Energy efficient materials, air conditioning, lighting and controls. Low-emission paints. Landscape irrigation. Solar water heating systems. Separation of recyclable and non-recyclable refuse. Carefully designed master plan and road network system to reduce pollution. Dedicated spaces for bicycles, hybrids and electrical cars. It's all about living in agreement with nature, in more ways than one.



BOUGAINVILLEA GLABRA

Heat, drought tolerant and frost sensitive; a true desert variety. Often referred to as "paper flower".

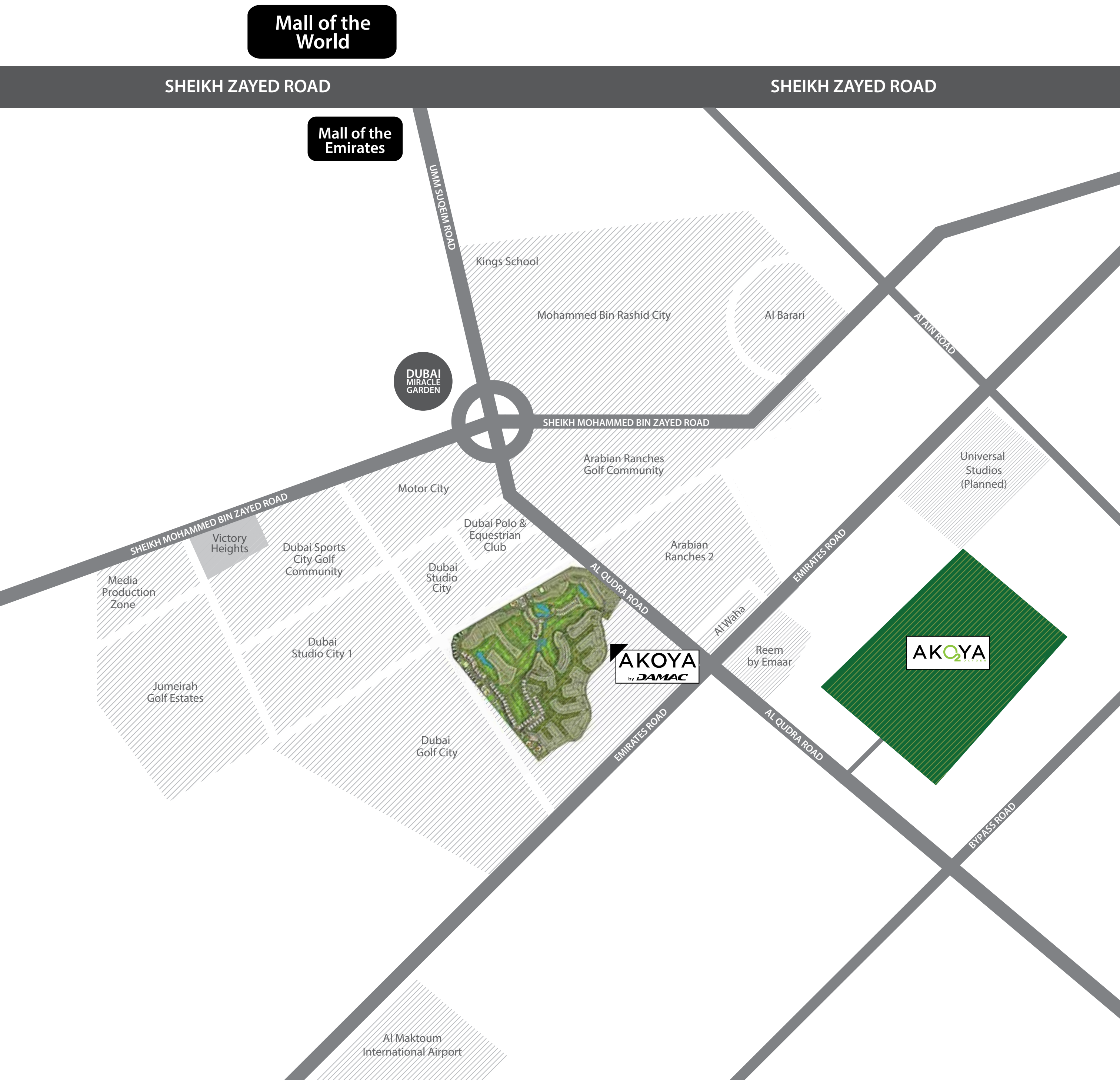


AKOYA₂

O X Y G E N

EVERYTHING YOU EXPECT, LIKE NEVER BEFORE

Over 55 million square feet of lush expanse. Impressive 18-hole Championship-standard golf course. Luxury spa inspired by the tranquillity of the desert. A selection of opulent homes set within the endless green acres. Luxurious five-star hotel that will raise the standards of hospitality. Lifestyles that will rekindle a fondness for nature. Every imprint of green luxury will have its rightful place at AKOYA Oxygen.



THE LUXURY OF LOCATION

Just a short drive from the centre of the city, and yet feels like a world away. Get on the Umm Suqeim Expressway and find yourself at the gates of AKOYA Oxygen within 15 minutes. The strategic location allows easy access to arterial road networks that puts the city within easy reach.











WORLD-CLASS 18-HOLE CHAMPIONSHIP-STANDARD GOLF COURSE play a different game

Stay in and experience the luxury. Roll down the blinds and the lush green fairways beckon. Stretching the limits of design, the 18-hole Championship course will tick every box of today's avid golfer. After the game, celebrate your victory at the exclusive clubhouse and experience luxury service that complements your gamesmanship.



ADENIUM OBESIUM

This desert rose is an evergreen succulent with brilliant trumpet shaped flowers; native to the Arabian Peninsula and Africa.



KITCHEN GARDENS market in your backyard

You don't need to look beyond the backyard for your kitchen ingredients. Be it tomatoes, lettuce, lemons or even spice. AKOYA Oxygen allows room for your own little fresh garden. So you can grow your own lovingly tended produce while cultivating a sustainable living culture at the same time.



LEUCOPHYLLUM GREEN CLOUD

A trademarked variety with larger leaves and darker colour, an ideal backdrop for the rich, rose-purple seasonal flowers.



IF YOU TRULY
LOVE NATURE
YOU'LL FIND
BEAUTY
EVERYWHERE



LUXURY SPA inner peace, naturally

Within the oasis of green is a sanctuary of escape inspired by the tranquillity of the desert. Fragrant gardens, natural landscaping, organic ingredients, indigenous traditions; all come together to deliver the finest treatments within stimulating natural environs that seamlessly add to the experience. Feel a new sense of renewal, in mind, body and soul.



LAVENDER

One of the most highly versatile herbs; used in essential oils, perfumes, aromatherapy, medicine and kitchens across the globe.



LUXURY SPA pampered by nature

Integration with the natural world is the hallmark. Whether it's the warm welcome and the scent of lavender as you walk through the leafy canopy. Outdoor showers and plunge pools that allow you to remain immersed in the natural moment. Or the most unique wellness, slimming and detox treatments through the hands of expert therapists.



ALOE

A plant with an innumerable number of health benefits; Egyptians called it the plant of immortality, nearly 6,000 years ago.



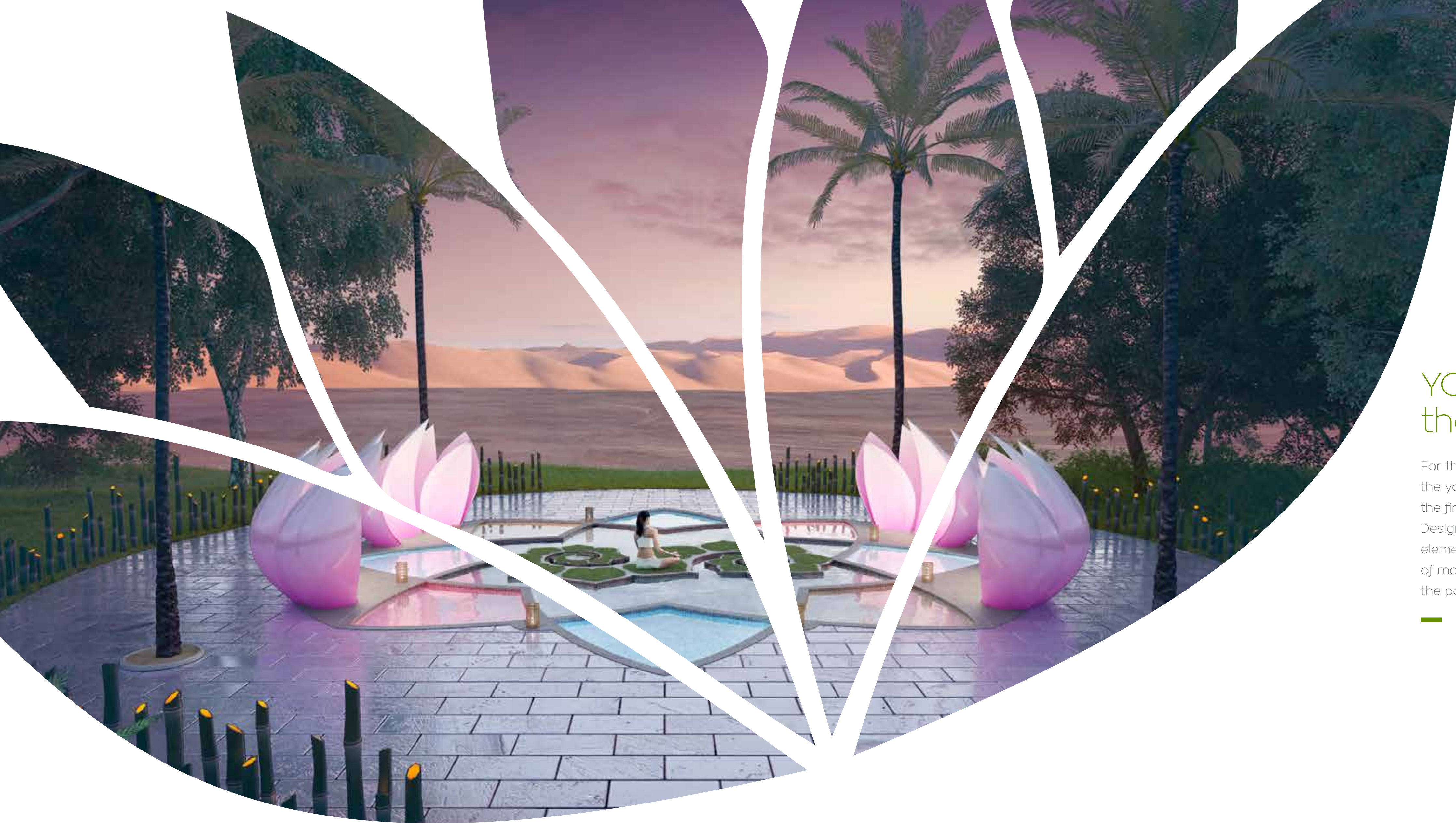
LUXURY SPA ayurvedic centre

Drawing inspiration from an ancient life system, the Ayurvedic Centre is a sanctuary to restore mind, body and soul. Pure, traditional and gleaned from ancient texts, the expertly trained team of practitioners will enthuse you with a range of wellness therapies, yoga programs, herbal treatments, diet control and exercise.



AGAVE ANGUSTIFOLIA MARGANATA

A small, beautiful Agave with short, sword shape leaves and cream margins; native to the Caribbean.



YOGA ENCLAVE the art of resting

For those pursuing a state of complete inner peace, the yoga enclave is the perfect retreat. It will feature the first-of-its kind dry and wet yoga ground. Designed like a lotus flower and inspired by natural elements, the yoga ground is an innovative mode of meditation. Settle down on the green or step into the pool for a yoga experience like never before.



LOTUS

Symbolic of purity, capable of growing in marsh and damp wetlands, the stamens are dried to produce fragrant teas.



NATURE DOES
NOT HURRY, YET
EVERYTHING IS
ACCOMPLISHED



WATERPLAY FOUNTAINS splash around the corner

When the sun comes out, keep your cool by just ambling across the street. At every turn, you're in for a refreshing splash with a cluster of interactive fountains, sprayers and shooters sprinkled across the community. A novel way to escape the heat and be entertained at the same time. This is big fun for little ones and grown-ups alike.



SUNFLOWER

Versatile, beautiful and one of the fastest growing plants; capable of rising 8 to 12 feet tall in rich soil within six months.



ORGANIC FRESH MARKET ripe for the picking

The season's first and the season's freshest are just around the corner. AKOYA Oxygen will have its very own organic fresh market where residents can buy and sell the freshest fruits and vegetables. Be it tomatoes and basil or chillies and lemon, there's no need to step out of the community. Get it all, fresh from the farm, and into your kitchen.



SOLANUM LYCOPERSICUM

Better known as the "tomato"; part of the nightshade family - Solanaceae and originally, golden in colour.



NATURE IS PAINTING
FOR US, DAY AFTER
DAY, PICTURES OF
INFINITE BEAUTY



GREEN DINING served with a helping of nature

The ingredients that go into creating the dining experiences at AKOYA Oxygen, aren't the same as the rest of Dubai. Interiors made with FSC certified wood. Energy Star qualified windows. Organically grown produce. Bio-degradable tableware. It's all about satisfying the greatest of appetites yet creating the smallest of footprints.



MINT

From the Greek word "menthe", with 13-18 species; vastly versatile with uses from the culinary to the medicinal.



IN EVERY WALK
WITH NATURE, YOU
RECEIVE FAR MORE
THAN YOU SEEK



SCHOOLS & NURSERIES going green starts early

A world-class community must be complemented by world-class educational institutions. But there's something different about the international curriculum schools at AKOYA Oxygen. Outdoor learning methods that inspire children about nature, woods and trees. Because cultivating a fondness for nature should start early.



TABEBUI ROSEA

A popular neo-tropical tree planted along most roads and parks; also known as the "Pink Trumpet" tree.

A close-up photograph of several green leaves, showing detailed vein patterns. The leaves are arranged diagonally across the frame. Overlaid on the right side of the image is the text "GREEN IS THE NEW BLACK" in a bold, white, sans-serif font. The text is centered vertically and horizontally within its area. Above and below the text are thin white horizontal lines.

**GREEN
IS THE NEW
BLACK**



CLARET

For avid naturalists, Claret begins a new love affair with nature, stringing together the most opulent homes along 120,885 square metres of lush green expanse. Within Claret, life's every need is fulfilled with effortless ease. Thoughtfully designed spaces, sleek lines and gratifying leisure escapes complement the breathtaking environs to represent a living experience that's as green as it gets.



- R3 - M
- R2 - M
- R2 - EE
- R2 - EM
- R2 - M1
- V3



- R3 - M
- R2 - M
- R2 - EE
- R2 - EM
- R2 - M1
- V3

JUNIPER

Intricately strewn across the dense foliage is Juniper – a collection of luxury homes that bring the green dream to life. Spread across 116,896 square metres of lush green, Juniper represents a living experience in unison with nature's finest elements. Juniper takes opulent living on a new terrain with elegantly designed homes, verdant spaces and spectacular outdoor escapes.





PRIMROSE

Perched among 128,897 square metres of green spaces is Primrose, a selection of well-appointed homes that exude luxury in more ways than one. For those who reside at Primrose, it is a living experience that appreciates the beauty of nature. From the supremely designed homes and verdant spaces to the spectacular outdoor amenities, this is the new standard when it comes to green living.

R3 - M R2 - M R2 - EE R2 - EM R2 - M1 V3



R3-M R2-M R2-EE R2-EM R2-M1 V3

ASTER

Begin a new love affair with nature at Aster, a supreme collection of homes meshed within the lush green tapestry. Spanning 125,920 square metres, Aster is a thoughtfully designed community that delivers a confluence of style and space while keeping you at the heart of nature. Within Aster, it's all about a life that's enriching, fulfilling and luxurious, in equal measure.






R3-M R2-M R2-EE R2-EM R2-M1 V3

COURSETIA

Set amidst the 60,964 lavish square metres of greenery is Coursetia – an exquisite selection of homes that are as stylish as they are refreshing. Residents at Coursetia will be treated to the most fascinating views and the warmest embrace of nature, every single day. Spacious interiors, sleek lines and enthralling leisure avenues; this is living perfected, at every turn.

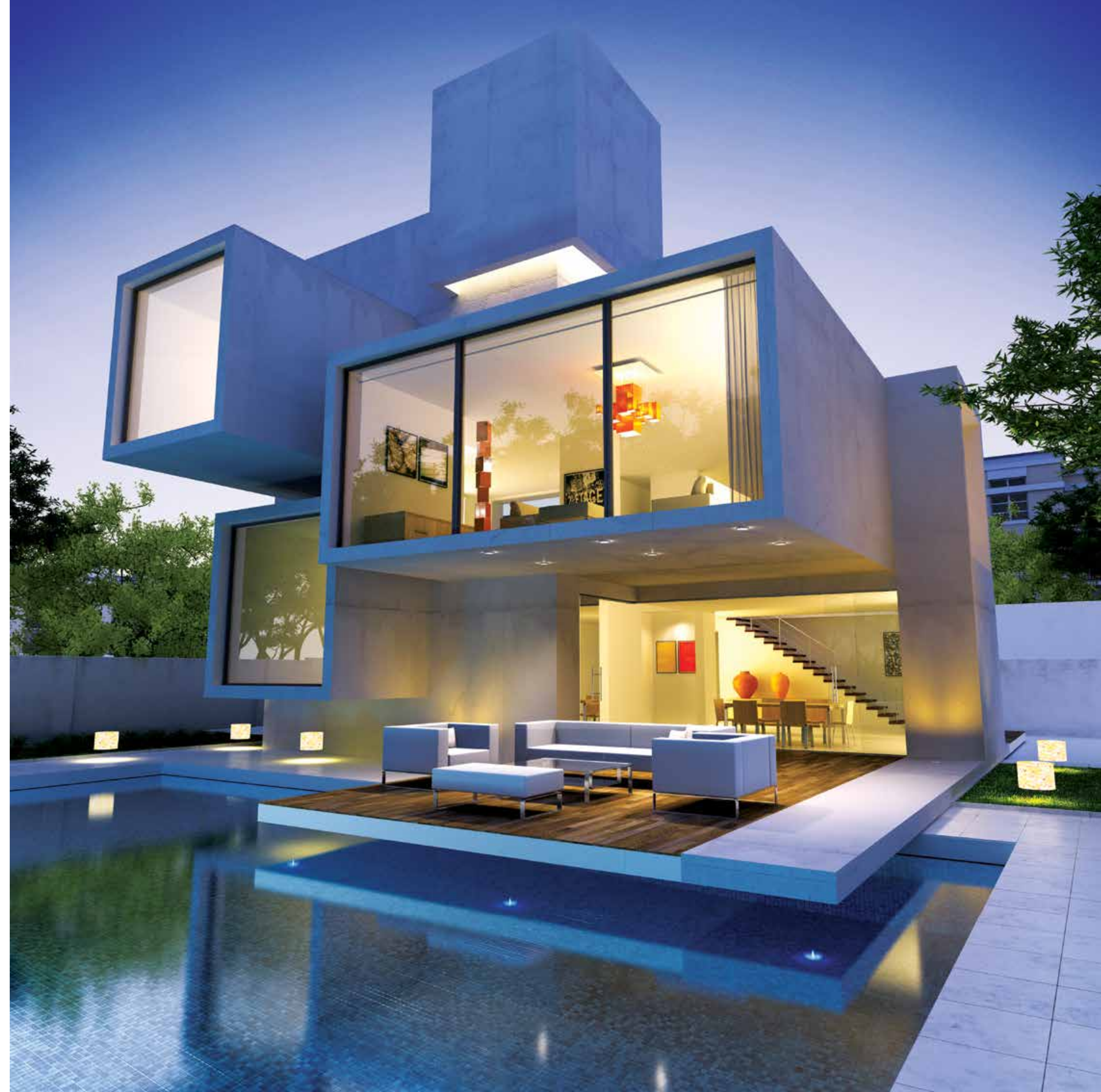
The background of the slide is a close-up photograph of green leaves, showing their veins and texture. The leaves are layered, with some in the foreground and others in the background, creating a sense of depth. The colors range from a vibrant green to a slightly lighter, yellowish-green at the top.

HOUSE TYPES

OLEANDER

Soak up the sunshine every morning, feel the breeze in your face and experience nature in its truest form. Oleander is an elegantly designed contemporary home that speaks luxury and privacy in the same breath. This is home at the heart of nature.

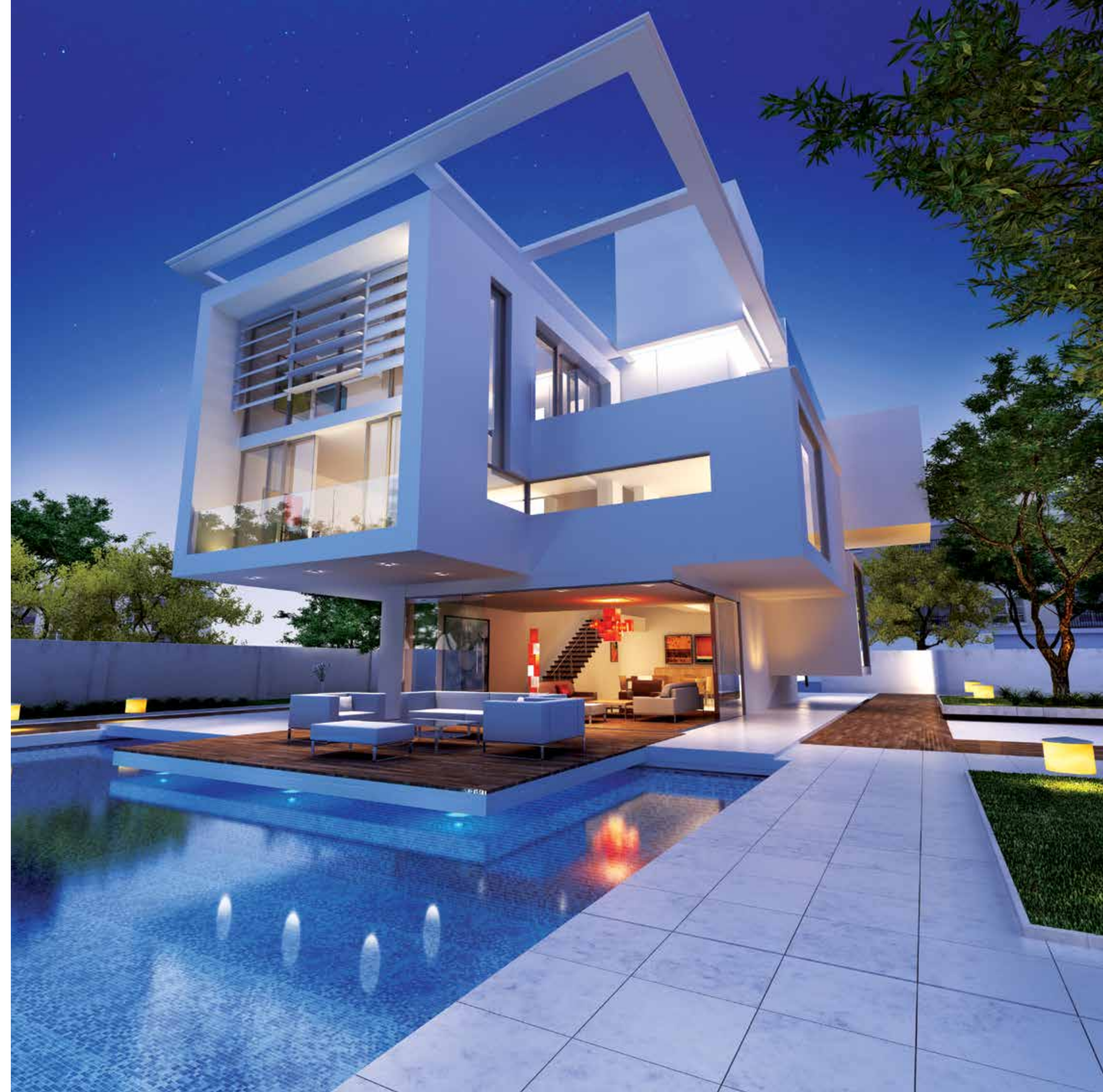
Artist's impression.



REDWOOD

What can be more refreshing than a walk at the break of dawn, in unison with the elements; with little to break the golden silence except the chirping of a few other early risers. Redwood is the beginning of nature's warmest embrace.

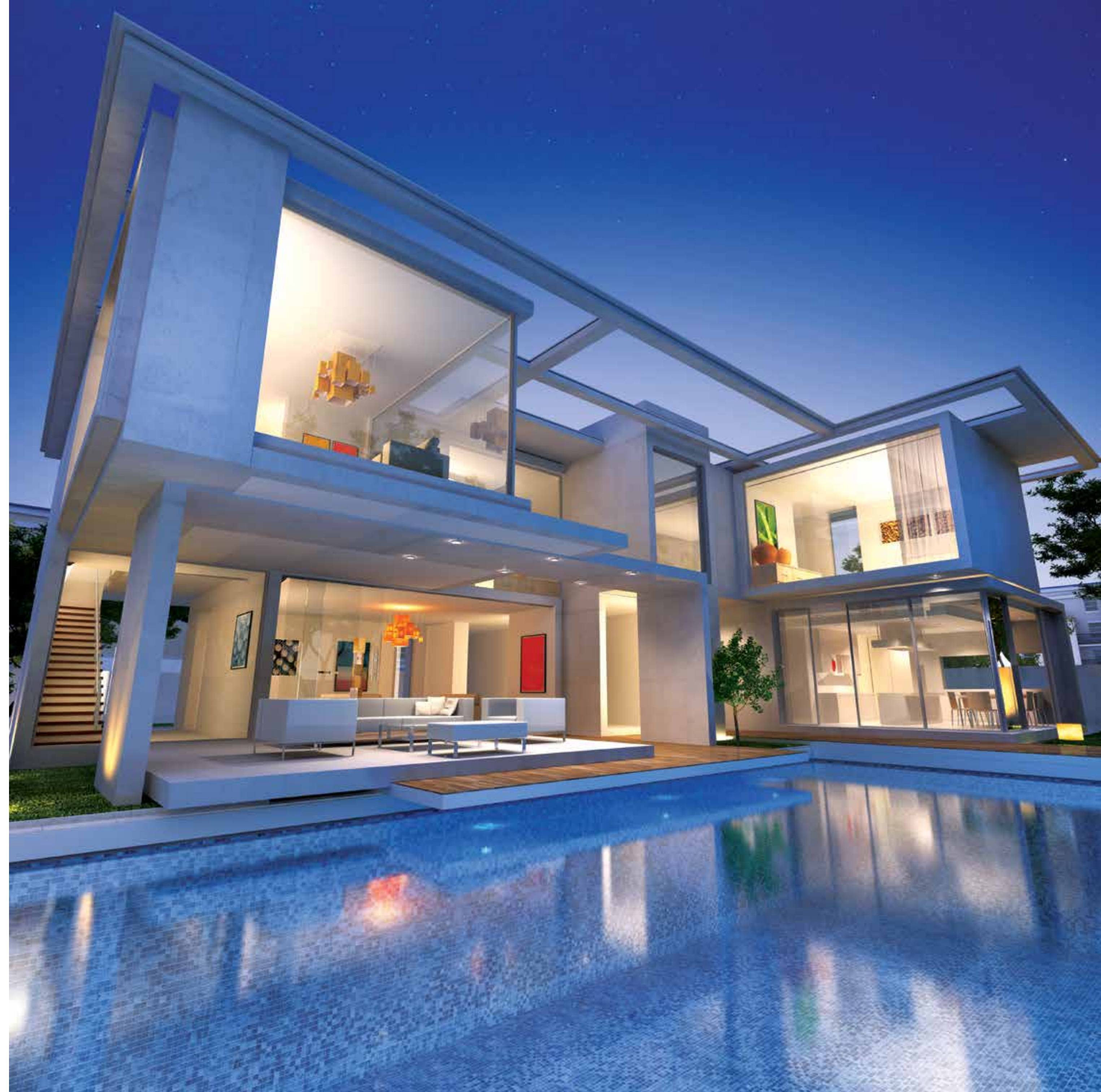
Artist's impression.



DURIAN

The enveloping landscapes allure from atop.
Views of the nature's bounty as far as the eyes
can see. And when you step back in, the warm
comforts placate you like little else. Nothing
compares to the joy of being home, naturally.

Artist's impression.



V3 - CELOSIA



V3 - CELOSIA | GROUND FLOOR



*Unless stated above, all accessories and interior finishes like wallpaper, chandeliers, furniture, electronics, white goods, curtains, hard & soft landscaping, pavements, features, swimming pool(s) and other elements displayed in the brochure, or within the show apartment/villa or between the plot boundary and the unit, are not part of the standard unit and exhibited for illustration purposes only.

V3 - CELOSIA | FIRST FLOOR



*Unless stated above, all accessories and interior finishes like wallpaper, chandeliers, furniture, electronics, white goods, curtains, hard & soft landscaping, pavements, features, swimming pool(s) and other elements displayed in the brochure, or within the show apartment/villa or between the plot boundary and the unit, are not part of the standard unit and exhibited for illustration purposes only.

R2-M1 - SOLANDRA

R2-EE - ACALEA



R3-M - GENISTA

R3-M - GENISTA

R2-EM - LIBERTIA



R2-M - MORINA

R2-M - MORINA



FLOOR PLANS

R2-M - MORINA



GROUND FLOOR



FIRST FLOOR

*Unless stated above, all accessories and interior finishes like wallpaper, chandeliers, furniture, electronics, white goods, curtains, hard & soft landscaping, pavements, features, swimming pool(s) and other elements displayed in the brochure, or within the show apartment/villa or between the plot boundary and the unit, are not part of the standard unit and exhibited for illustration purposes only.

R2-EE - ACALIA



GROUND FLOOR



FIRST FLOOR

*Unless stated above, all accessories and interior finishes like wallpaper, chandeliers, furniture, electronics, white goods, curtains, hard & soft landscaping, pavements, features, swimming pool(s) and other elements displayed in the brochure, or within the show apartment/villa or between the plot boundary and the unit, are not part of the standard unit and exhibited for illustration purposes only.

R2-EM - LIBERTIA



GROUND FLOOR



FIRST FLOOR

R2-M1 - SOLANDRA



GROUND FLOOR



FIRST FLOOR

*Unless stated above, all accessories and interior finishes like wallpaper, chandeliers, furniture, electronics, white goods, curtains, hard & soft landscaping, pavements, features, swimming pool(s) and other elements displayed in the brochure, or within the show apartment/villa or between the plot boundary and the unit, are not part of the standard unit and exhibited for illustration purposes only.

*Unless stated above, all accessories and interior finishes like wallpaper, chandeliers, furniture, electronics, white goods, curtains, hard & soft landscaping, pavements, features, swimming pool(s) and other elements displayed in the brochure, or within the show apartment/villa or between the plot boundary and the unit, are not part of the standard unit and exhibited for illustration purposes only.

R3-M - GENISTA



GROUND FLOOR



FIRST FLOOR

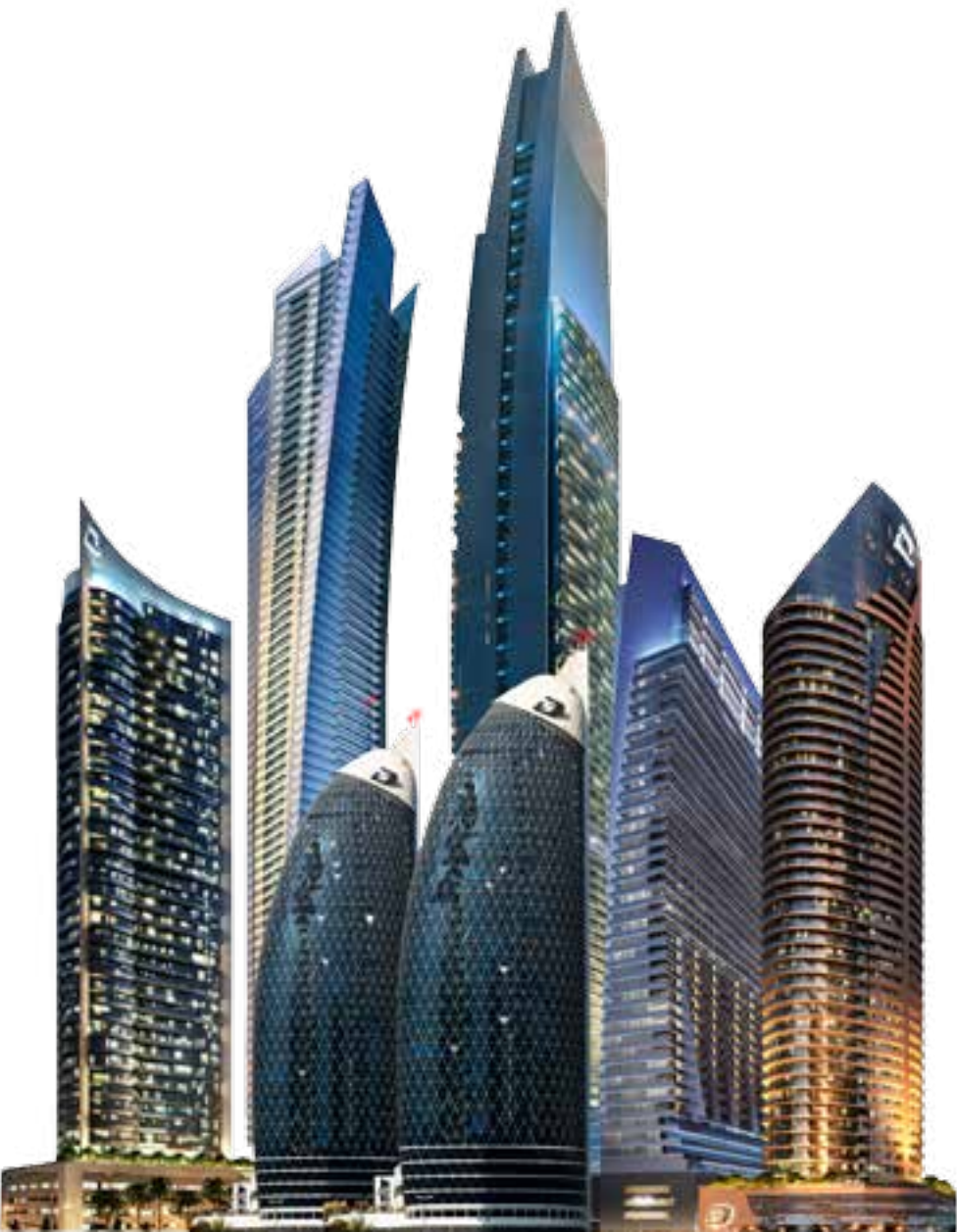


SECOND FLOOR

DAMAC

LIVE THE LUXURY

The inspiration behind AKOYA Oxygen is DAMAC Properties, one of the region's largest luxury property developers. DAMAC represents a decade of delivering iconic and desirable developments across the UAE, Jordan, Lebanon, Qatar and Saudi Arabia. Close to 11,000 units completed. Nearly 26,000 soon to be unveiled.*



*Unless stated above, all accessories and interior finishes like wallpaper, chandeliers, furniture, electronics, white goods, curtains, hard & soft landscaping, pavements, features, swimming pool(s) and other elements displayed in the brochure, or within the show apartment/villa or between the plot boundary and the unit, are not part of the standard unit and exhibited for illustration purposes only.

*As of 30th June 2014.

For more information
please call /WhatsAppTrupti Nair on 00971 507851492
Email: trupti@homeloungeuae.com

This brochure is printed on 100% eco-friendly paper



ELEMENTAL
CHLORINE
FREE
GUARANTEED

